

Fulton County COVID-19 Response Update

August 18, 2021 BOC Meeting

OVERVIEW

Incident Response Update

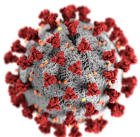
- Statistics
- Vaccination Response
- Mobile Vaccination Implementation

Reopening Update

- Reopening Update
- ERAP Phase II Update

2021 COVID Funding Update

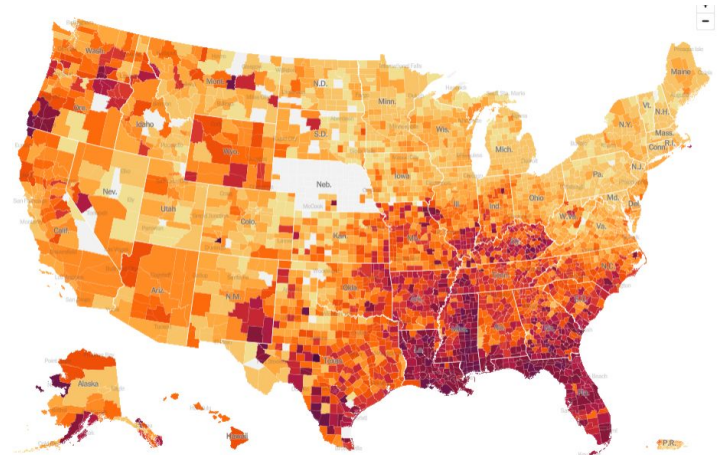
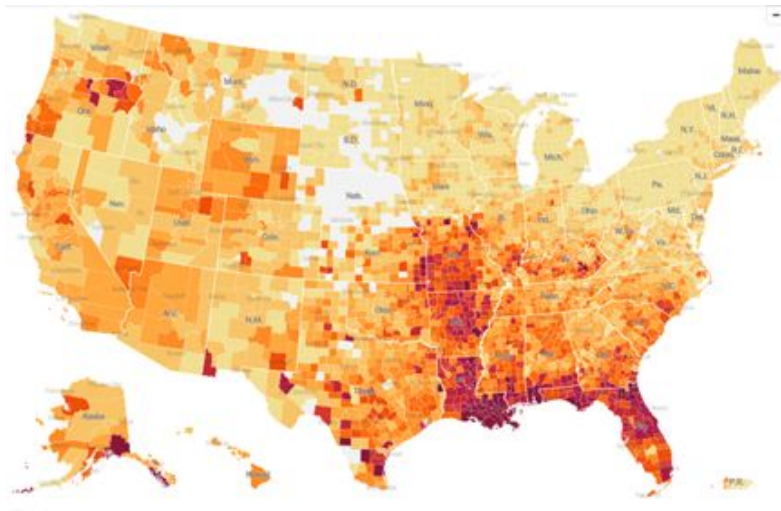
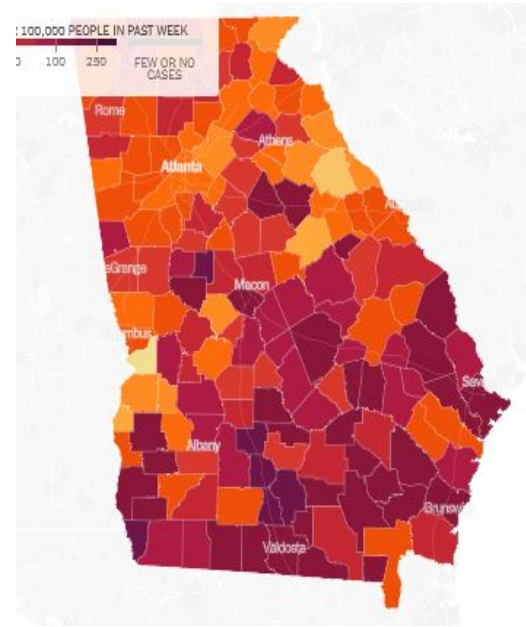
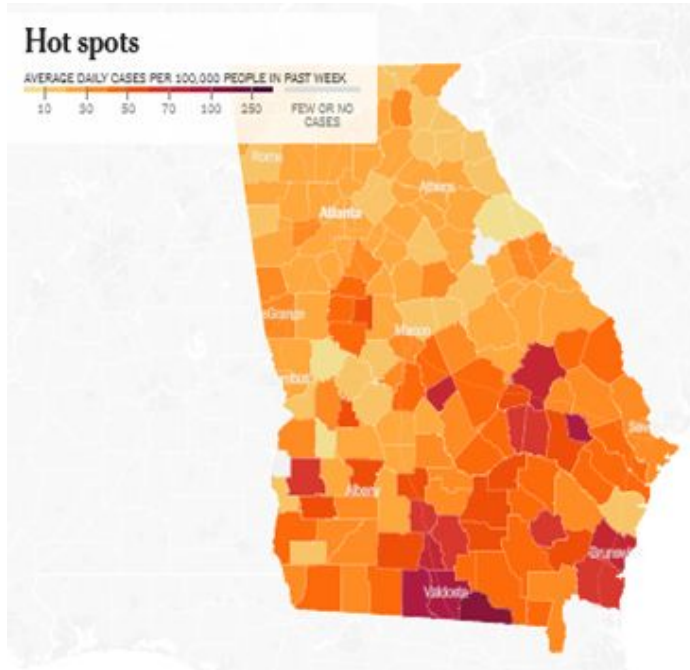
- Update - COVID 19 Reserve
- American Rescue Plan Spend Updates



INCIDENT RESPONSE REVIEW

- Since June 27th the 7-Day Case rate for Fulton County has risen from 20 per day to 349 a day or 1740%
- Fulton County is currently exhibiting the highest level of community transmission since the beginning of the pandemic.
- This recent surge is expected to peak at the highest-ever-levels of both infections and hospitalizations.
- 3 of 4 major indicators on the Fulton County scorecard are still red.

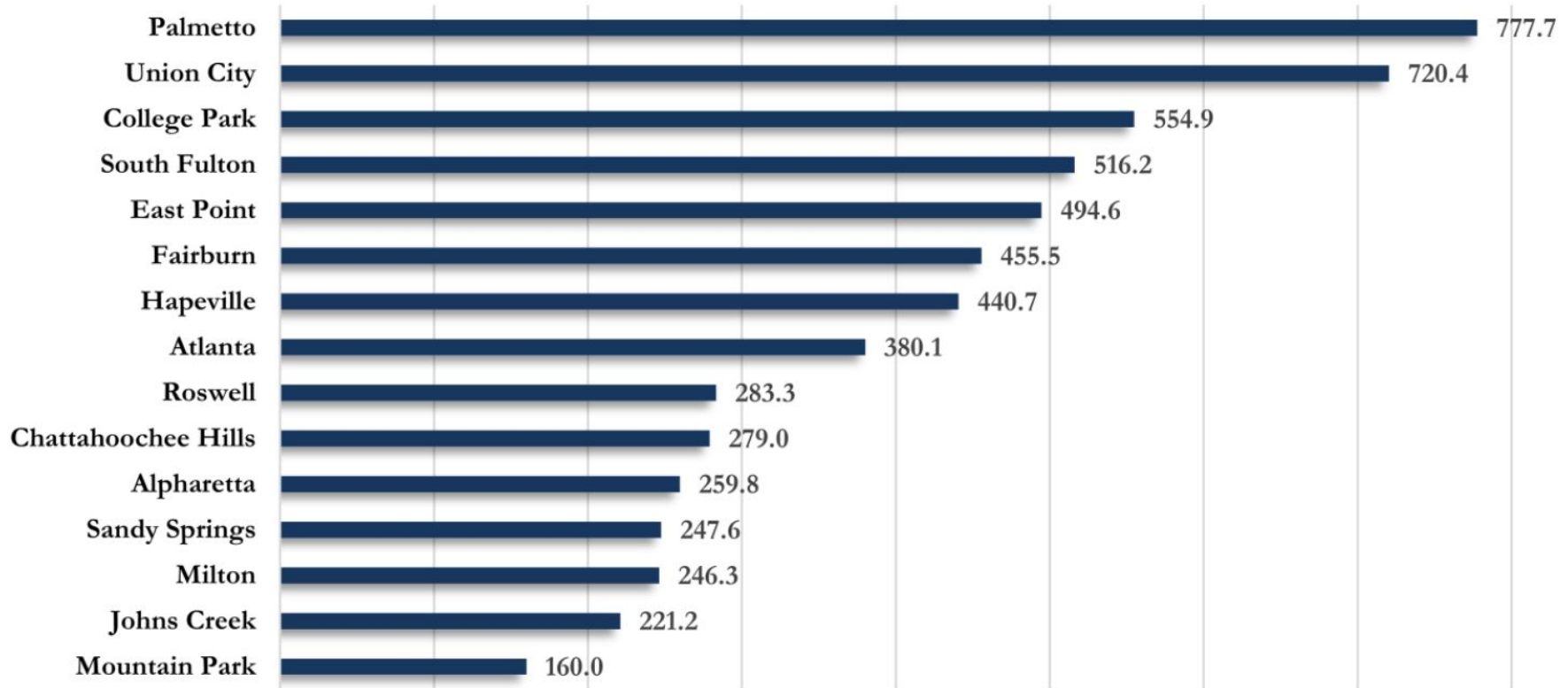
Incident Response Update (Heat Maps Aug 2 vs Aug 17)



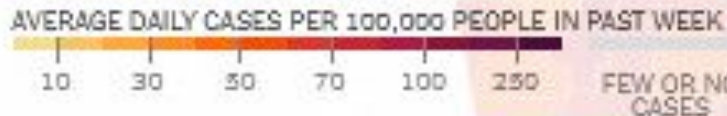
Incident Response Update



Fig. 8. Incidence Rates by Fulton City for Recent 14-day Reporting Period



Hot spots



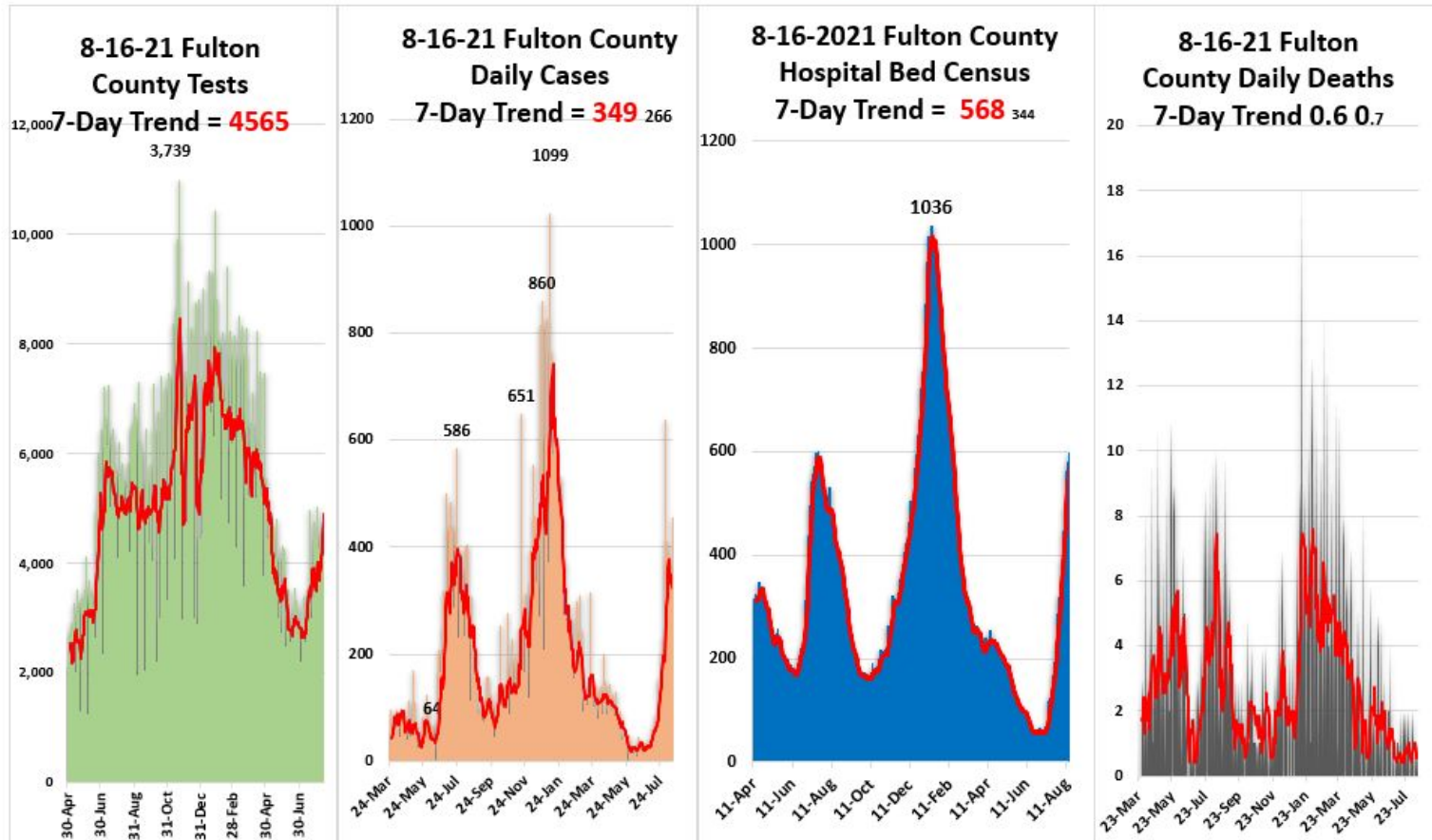
Incident Response Update



- **Fulton County COVID-19**

- 7-day average for cases is **349** up 121% since the last BoC.
- 7-day average for % positive is **13.4** same as last BoC.
- 7-day average, Hospitalizations is **568** up 98% since the last BoC
- 7 day average, for deaths is **.6** same last BoC

Fulton County Dashboard 8-16-2021: New Tests = 5,708 / New Cases = **455** / New COVID Census = **598** / New Deaths = 0



Incident Response Update



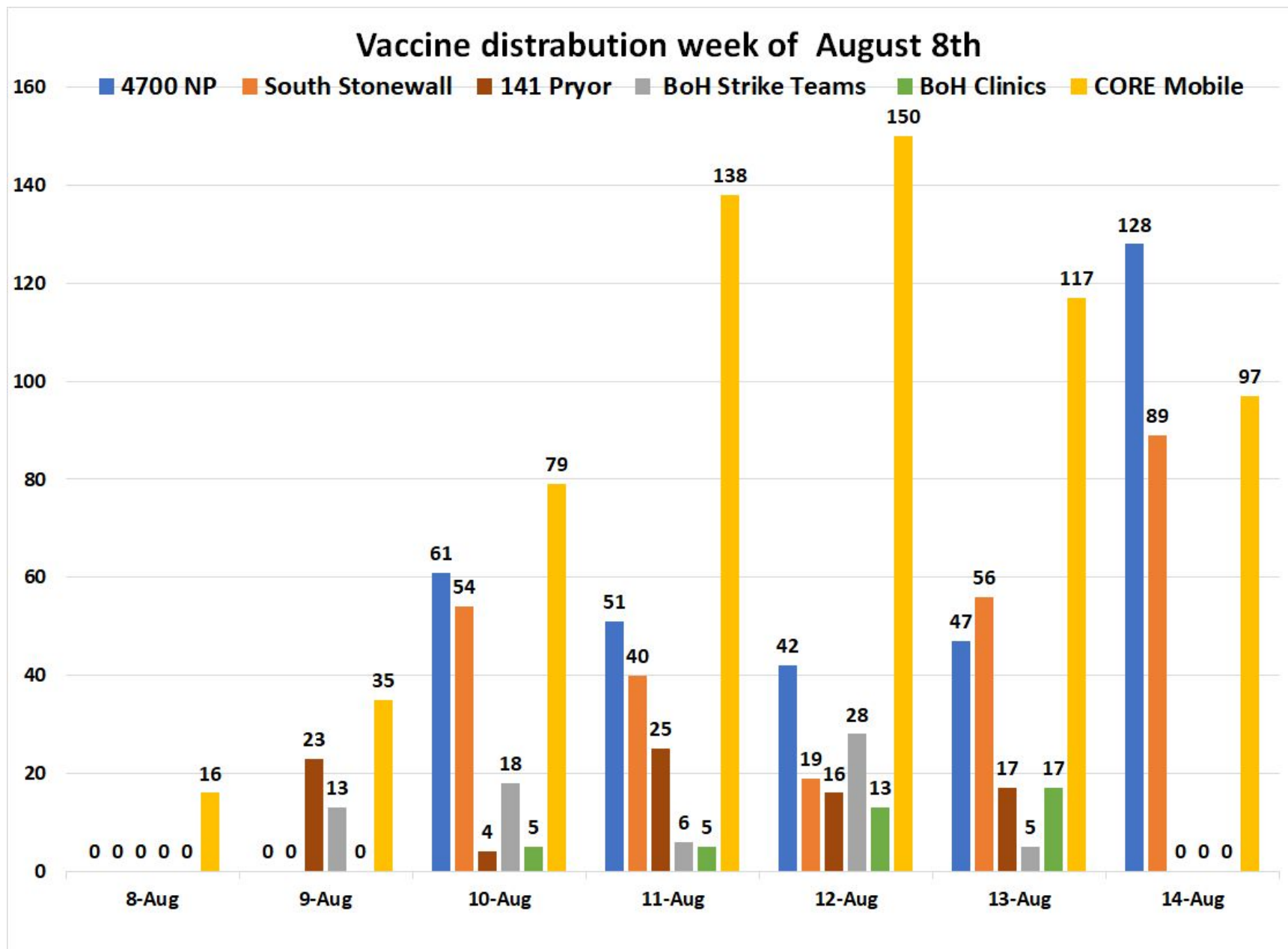
8/16/21 Fulton County COVID-19 Scorecard

Metric	Status (7-day average) =*	Metric
Testing (Demand & Capacity)	* 4,233 ⬆️	Current capability is 6,000 / day Daily Testing: over 2857 , 1428 - 2857 , less than 1428
Testing (Results)	49-72 hrs ⬆️	Time to receive results: 0 - 48 , 49 - 96 , over 96
Cases	* 349 ₁₉₁ ⬆️	Less than 20 , 20 – 74 a day , 75 to 249 , over 250
Fulton positivity rate % +	* 13.4% _{13.4} ⬆️	Less than 1% , 1% - 5% , 5% - 10% , over 10%
Hospitalizations COVID census	* 568 ₂₉₀ ⬆️	Less than 50 , 50 – 200 , 201 - 349 , over 350
Hospital Bed Availability	* 12.8% ⬇️ * 11.9% Adult	Open Beds: over 20% , 15% - 20% , Less 15%
Hospital CCU Bed Availability	* 14.2% ⬇️ * 13.3% Adult	Open CCU Beds: over 20% , 15% - 20% , less 15%
Hospital Vent Availability	* 57.1% ⬇️	Open Vents: over 25% , 15% - 25% , less 15%
COVID Deaths	* 0.6 ⬆️	Less than .25 , .25 – 2.5 , 2.5 – 5 , over 5
Morgue census	* 93 ⬆️	Less Than 75 , 75 – 90 , over 90
COVID Vaccine Administered	518,157 92% ⬇️	More than 75% , 50% - 75% , less than 50%

VACCINATION RESPONSE

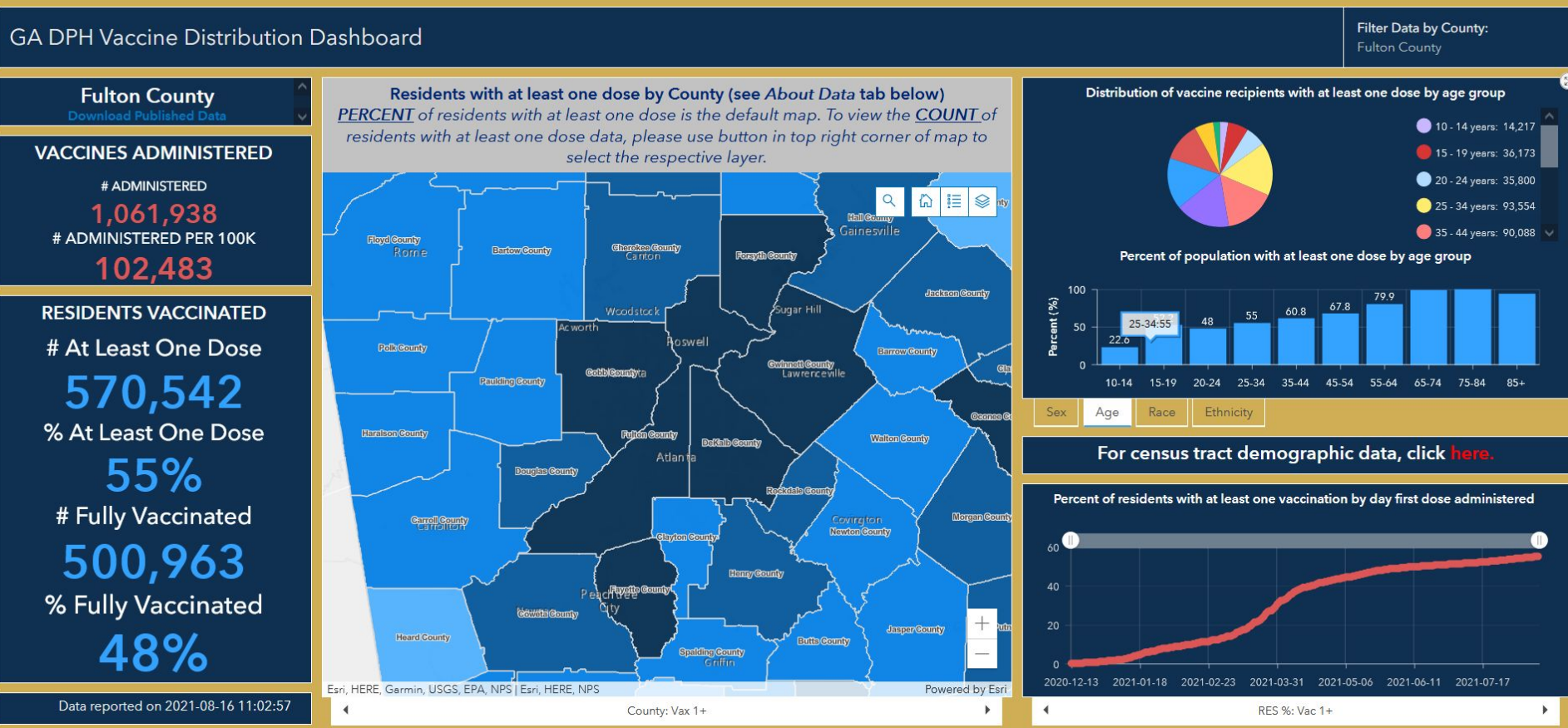
- Fulton County fixed & mobile vaccination sites reached the 518K vaccines administered.
- Fulton County mobile vaccination units have administered over 36K doses of vaccines.
- Ten mobile units will be at 48 locations this week.
- Vaccinations will continue to be available at these fixed locations: 6 Board of Health Clinics, 141 Pryor St, 4700 North Point, and *5710 Stonewall Tell Rd. * Open till 8 PM
- BoH has 3 roving strike teams working in targeted areas providing vaccines and answering questions about hesitancy.
- Mobile units vaccinated 223 at 32 APS locations last week

Vaccination Response

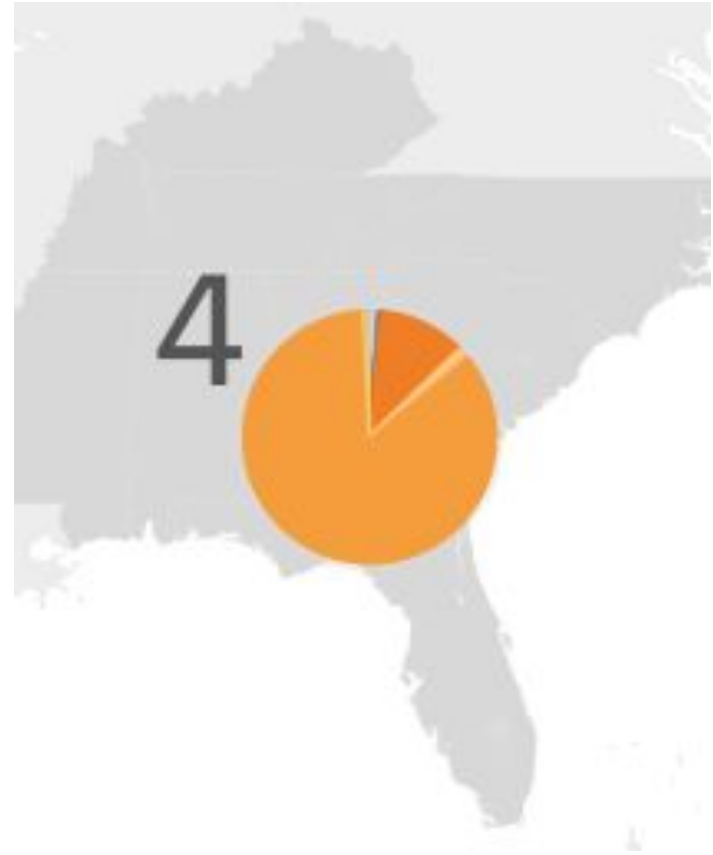
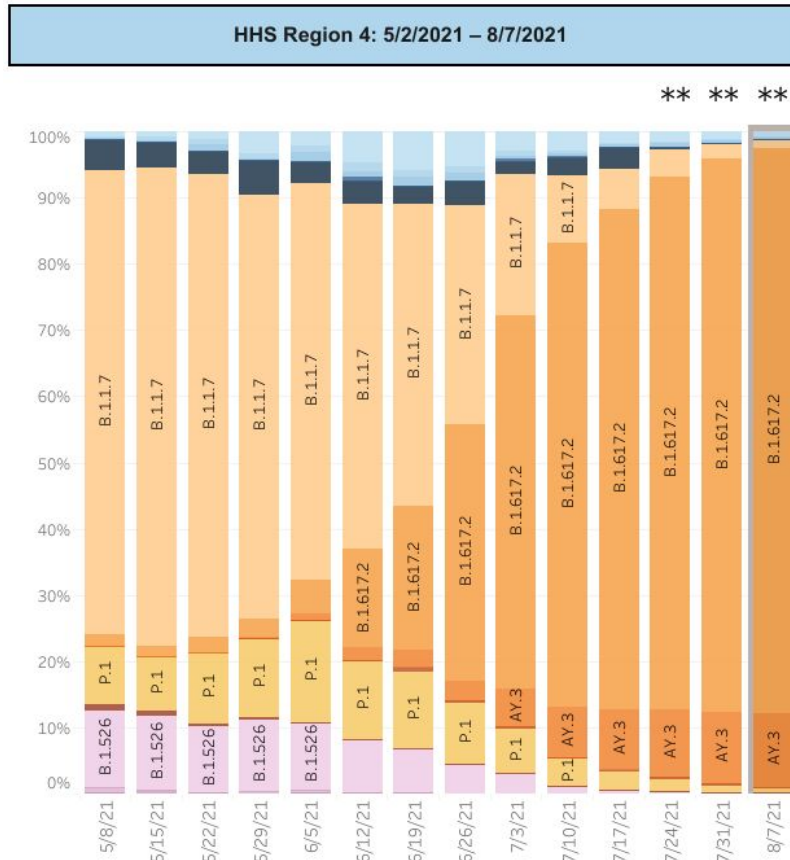


DPH Vaccine Dashboard

- Totals extracted from Georgia Registry of Immunization Transactions & Service or GRITS
- State continuing to verify all zip code data and other data errors
- Fulton County % vaccinated over 18 years old = 65% one dose 60% fully vaccinated
- Large increases in recent cases among children—60% increase in children aged 5-17, and an 82% increase in those 0-4 this week versus last week.



Vaccination Response: Delta Variant



- Delta variant now accounts for 95% of new cases nationwide, 97% in GA (all Orange)
- Delta is more virulent, 5 to 10 times more than the Alpha Strain
- The symptoms are generally the same
- Early data suggests that Delta may have a higher hospitalization rate than Alpha
- Currently the death rate for Delta is similar to the Alpha
- The best defence for the delta variant is still mRNA Vaccines

Mobile Vaccination: Sites this week

7

Upcoming Sites/Events (8/16 - 8/22)

August 16	August 17	August 18	August 19	August 20	August 21	August 22
Crossroads Community Ministries	DHL Supply Chain	Back to NOW (Mercedes Benz Stadium)	DHL Supply Chain	City of Fairburn Municipal Court	Clarion Court Apartments Back to School Event	Friendship Community Church
DHL Supply Chain	Georgia Avenue High Rise	Capitol Gateway Apartments	Forest Cove Apartments	DHL Supply Chain	KIPP Soul	Holy Spirit Catholic Church
Sandtown Middle School	Mercedes-Benz of Buckhead	Cheshire Bridge High Rise	Impact Church	KIPP Soul	KIPP Strive	Impact Church
	Mount Pisgah	DHL Supply Chain	Material in Motion	KIPP Strive	Solidarity Sandy Springs Pantry	New Life Tabernacle Church of God in Christ
	North Fulton Community Charities (Food Pantry)	Mexican Consulate	Mercedes Benz of Buckhead	Little 5 Points Center for Arts and Community	South Fulton Service Center	
	South Fulton Service Center	Mount Moriah	Salem Bible Church	Mexican Consulate	The Gathering Place	
	Syncreon	South Fulton Service Center	South Fulton Service Center	South Fulton Service Center	Zion Hill Baptist Church	
	The Commons (low income housing)	Springfield Missionary Baptist Church				
	Zion Hill Baptist Church					

Mobile Vaccination: Road Ahead

- Weekly Goal is to have 2 units daily to be 2nd shift hours (2-8 pm)
- We will continually evaluate all activities both fixed and mobile on effectiveness and adjust or discontinue, as necessary.
- Returning to APS for vaccination event at 32 schools the weeks of August 30 - September 3.
- Other summer Events partnerships; Construction sites, Falcons, Marta locations, VAX-UP concert, summer camps
- Roll out of incentive program for strike teams to begin with \$25 gift cards, will evaluate for effectiveness and expand/adjust as indicated.

TARGETED OUTREACH: CLOSING THE VACCINE EQUITY GAP



RACE

34% of Black residents have received at least 1 dose, compared to 54% of White residents

GEOGRAPHY

40 Census tracts within Fulton County have <20% residents with at least 1 dose.

AGE

45% of 20 - 24% year olds have received at least 1 dose, compared to 65.6% of 45 – 54 year olds

OUR APPROACH

ACCESS

- Community-based locations
- Non-traditional hours (Third shift)
- Language access
- Disability access
- Parent-friendly

INCENTIVES

- Give-aways
- Entertainment
- Refreshments
- Prizes

EDUCATION

- Town Hall meetings
- Conversation Guides
- “Myth Busting” collateral and video

TRUSTED VOICES

Municipalities | Elected Officials | School Systems
Nonprofits | Media
Small Businesses | Community Orgs
Faith Partners
Youth Organizations

VAX UP FULTON CAMPAIGN

Digital Out of Home | Radio Announcer :30 Spots



Bus Shelters | Train Stations | Social Media | Print





Fulton County Government
Sponsored (demo) 

COVID-19 vaccines help keep you from getting the virus, but you still need to wear a mask to protect those around you.



**FULTON
COUNTY**



#VAXUPFULTON
WEAR A MASK AFTER YOU VAX

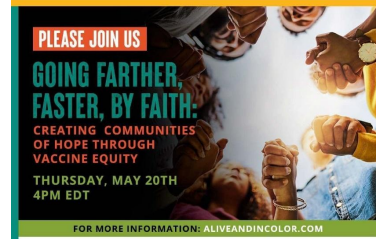
FULTONCOUNTYGA.GOV

Wear a Mask After You Vax
A safe way to build protection.

Learn More

[illegible]

ALIVE & IN COLOR CAMPAIGN



Virtual Town Hall Meetings Completed in collaboration with key partners.



Media Partner



Wednesday, August 4 at 7 p.m.



BACK-TO-SCHOOL FAIR & PEP RALLY
 JULY 31, 2021 • 10:00 AM - 2:00 PM
 FREE FOOD, FUN, AND GIVEAWAYS
 FREE SCHOOL SUPPLIES • ENTERTAINMENT
 DOOR PRIZES • VENDORS • HEALTH FAIR
 ON-SITE SCHOOL REGISTRATION
 COVID VACCINATIONS & IMMUNIZATIONS AVAILABLE



38 Middle + High Schools



AUGUST 3 2021 6:00 PM

AVIATION COMMUNITY CULTURAL CENTER



SAMPLE OF COMMUNITY EVENTS & PARTNERSHIPS



Questions?



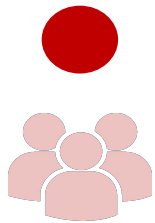


Fulton County Government Reopening Plan

Gating Criteria

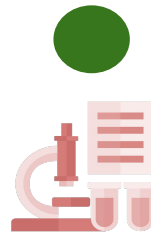
Reopening Indicators

CASES



Downward trajectory in the 7-day average of new positive tests within a 14-day period, and positivity rate below 5%

TESTING

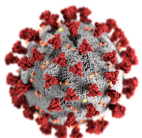


Ability to test 100% of county employees returning to work, & execute the BOH testing plan

EQUIPMENT



PPE and supplies for all employees interacting with public.



**Satisfy Before Proceeding to Phased Comeback*

COVID POSITIVE EMPLOYEES

LAST 2 WEEKS	
DEPARTMENT	POSITIVE
CLERK OF SUPERIOR COURT	2
DREAM	1
JUVENILE COURT	1
LIBRARY	3
POLICE	1
PUBLIC WORKS	5
PURCHASING	1
SHERIFF	1
SOLICITOR GENERAL	1
SUPERIOR COURT-ALLJUDGES	1
SUPERIOR COURT-GENERAL	2
TAX ASSESSOR	1
GRAND TOTAL	20

COVID POSITIVE EMPLOYEES

CUMULATIVE			
DEPARTMENT	POSITIVE	DEPARTMENT	POSITIVE
ARTS/COOPERATIVE EXT.	1	LIBRARY	26
BHDD	3	MAGISTRATE COURT	3
BOARD OF COMMISSIONERS	2	MEDICAL EXAMINER	2
BOARD OF HEALTH	28	POLICE	7
CLERK OF SUPERIOR COURT	50	PROBATE COURT	5
COUNTY ATTORNEY	3	PUBLIC DEFENDER OFFICE	4
COUNTY MANAGER	2	PUBLIC WORKS	27
COUNTY MARSHAL	11	PURCHASING	2
COMMUNITY DEVELOPMENT	1	ELECTIONS	5
DISTRICT ATTORNEY	17	SENIOR SERVICES	8
DREAM	24	SHERIFF	5
EMERGENCY MANAGEMENT	2	SOLICITOR GENERAL	5
EMERGENCY SERVICES	38	STATE COURT-ALL JUDGES	1
EXTERNAL AFFAIRS	2	STATE COURT-GENERAL	6
FINANCE	6	SUPERIOR COURT-ALLJUDGES	4
HUMAN RESOURCES	2	SUPERIOR COURT-GENERAL	25
INFORMATION TECHNOLOGY	5	TAX ASSESSOR	22
JUVENILE COURT	18	TAX COMMISSIONER	35
GRAND TOTAL			407

Return to Office Plan

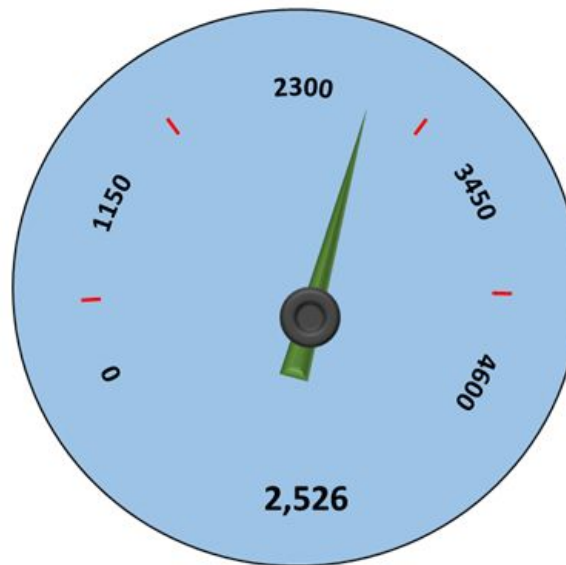
Employee Vaccination Incentive Program

Applications



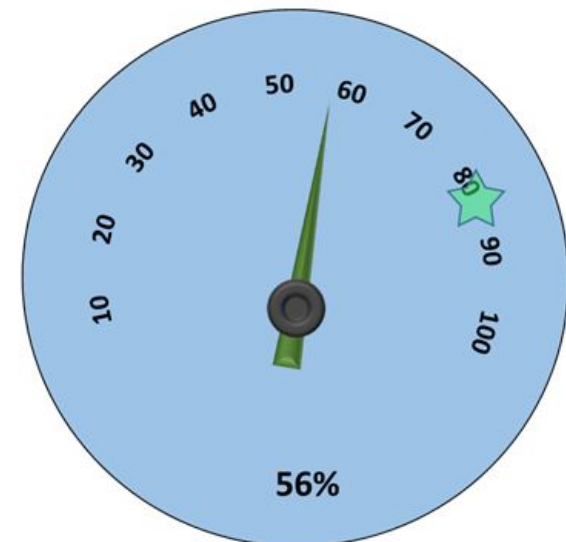
Aug 2nd – 2,709
July 12th – 2,560
June 14th – 2,291
May 31st – 2,056
May 17th – 1,813
May 1st – 1,454

Approved



Aug 2nd – 2,484
July 12th – 2,353
June 14th – 2,102
May 31st – 1,894
May 17th – 1,702
May 1st – 1,354

Vaccination %



Aug 2nd – 55%
July 12th – 52%
June 14th – 47%
May 31st – 42%
May 17th – 41%
May 1st – 30%



Fulton County's Vaccination Mandate



Safe people, Safe place

- ☐ Educate workforce on benefits of vaccine
- ☐ Enhanced vaccination incentives
- ☐ All incentives will end on COB Friday, October 1, 2021



Vaccination mandate to begin **Tuesday, September 7, 2021**

- ☐ Provide proof of FDA authorized vaccination must be submitted to HR OR
- ☐ Provide proof of negative PCR/NAAT COVID test weekly OR
- ☐ Submit request for reasonable accommodation for exception or deferral to DCRC.



Compliance enforcement to begin **Wednesday, October 6, 2021**

- ☐ Failure to comply with testing alternative will result in 1 day suspension each week.
- ☐ 1 day suspension can be accumulated and scheduled by Appointing Authority
- ☐ Employee suspended 10 times, within a 6 month period, could be subjected to dismissal
- ☐ New employees have 30 days from start date to get into compliance.

Elected Officials



- ☐ Offices of Elected Officials will have the ability to Opt-in
- ☐ Employees in elected official offices that does not adopt the policy will not eligible for FCEA incentives or subject to the requirements.

Emergency Rental Assistance

Phase II Snapshot

QUICK STATS

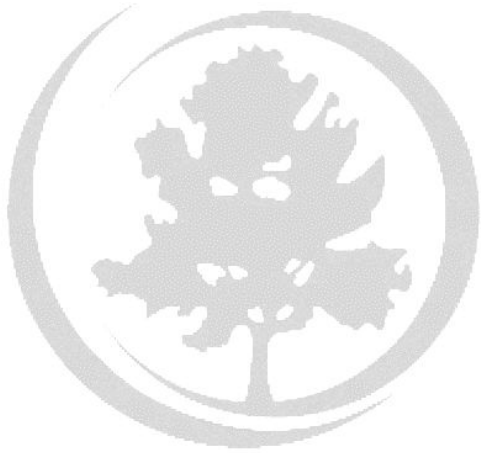
6545 Applications initiated

2612 Applications submitted

1662 Applications adjudicated

237 applications paid*

* P&N only made their 1st batch of payments on 8/15. We expect to see an increase in the payment rate now that they will switch to daily payments.



QUESTIONS



Emergency Response Reserve & American Rescue Plan Act Funds Update

COVID-19: Recovery Funds Plan

Economic Recovery and
Operational Resiliency Plan

August 18, 2021



Consolidated Covid Response Plan

	7.31.2021		8.15.2021		7.31.2021		8.15.2021	
	Budget		Expenses					
	Operational Plan -100% FEMA Reimb	Plan Changes	Operational Plan -100% FEMA Reimb		YTD Expenses	Expense Changes	YTD Expenses	
<i>In Millions \$</i>								
EERF - General Fund	\$ 14.9	-	\$ 14.9		\$ 8.9	\$ 0.6	\$ 9.4	
Communications	2.0	-	2.0		0.9	0.5	1.4	
Child Care / Health care	1.3	-	1.3		0.5	-	0.5	
Payment to Employees	6.6	-	6.6		6.6	-	6.6	
Information Tech - Virtual Support	2.0	-	2.0		-	-	-	
2020 Obligation	3.0	-	3.0		0.9	0.0	1.0	
American Rescue Act	208.4	1.4	209.8		6.5	1.9	8.4	
Health Infrastructure	17.3	-	17.3		-	-	-	
Pandemic Proof County Facilities	28.0	-	28.0		0.3	-	0.3	
Day Porters / Cleaning	4.1	-	4.1		0.4	0.0	0.5	
Child Care / Health care	0.3	-	0.3		0.3	-	0.3	
Premium Pay for Employees	3.4	-	3.4		3.4	-	3.4	
PPE- County Employees	5.0	-	5.0		1.3	-	1.3	
Court Backlog Project	75.0	-	75.0		-	0.0	0.0	
Information Tech - Virtual Support	8.0	-	8.0		0.4	-	0.4	
Safety Net Services - CSP	8.0	-	8.0		-	-	-	
Long Term Revolving Loan Program	5.2	-	5.2		-	-	-	
Food Insecurity	6.1	-	6.1		-	0.0	0.0	
Job Training	2.7	-	2.7		-	-	-	
ERAP 2	25.0	-	25.0		-	-	-	
ERAP -1 and 2 Additional Operational Costs	7.0	1.4	8.4		0.4	1.9	2.3	
Testing Vaccination	11.7	-	11.7		-	-	-	
Vaccine Incentive Program	1.7	-	1.7		-	-	-	
Consolidated Appropriations Act	18.0	-	18.0		10.7	1.5	12.2	
ERAP 1	18.0	-	18.0		10.7	1.5	12.2	
FEMA Related Expenses	\$ 38.8	-	\$ 38.8		14.2	3.2	17.4	
Projected Annual Uses	\$ 280.1	1.4	\$ 281.5		\$ 40.3	\$ 7.2	47.5	
Reserve	\$ 47.4	(1.4)	\$ 46.0					

Cash Flow Projections – COVID 19 Response

In Millions \$

Uses of Funds		2021	2022	2023	2024	Total
A	EERF - General Fund	14.9	-	-	-	14.9
B	American Rescue Act	89.5	66.3	51.5	2.6	209.8
C	Consolidated Appropriations Act	18.0	-	-	-	18.0
D	FEMA Related Expenses	38.8	-	-	-	38.8
Projected Annual Uses		\$ 161.2	\$ 66.3	\$ 51.5	\$ 2.6	\$ 281.5

Sources of Funds		2021	2022	2023	2024	Total
A	EERF	14.9	24.0			38.9
B	American Rescue Act	128.4	103.4			231.8
C	Consolidated Appropriation Act	18.0				18.0
D	FEMA Reimbursement at 100%	19.4	19.4			38.8
Projected Annual Sources		\$ 180.7	\$ 146.8	\$ -	\$ -	\$ 327.5

Cash Balance EOY - 100% FEMA Reimbursement	19.5	100.1	48.6	46.0	46.0
Cash Balance EOY - 50% FEMA Reimbursement	9.8	80.7	29.2	26.6	26.6

Emergency Rental Assistance

ERAP -1

Funded - Consolidated Appropriations Act

Received - Mid/January 2021

<i>in Millions \$</i>	Allocation	Received by FC	YTD Expense
Regular	\$18.0	\$18.0	\$12.2

ERAP -2

Funded - American Rescue Plan Act

Received - Mid/May 2021

<i>in Millions \$</i>	Allocation	Received by FC	YTD Expense
A - Regular	\$14.2	\$5.7	\$0.0
B - High Need	\$10.7	\$4.3	\$0.0

ARPA - Admin. Supplement

County Allocation of ARPA
funding for Administration

Total	\$51.3	\$36.4	\$14.5
--------------	---------------	---------------	---------------





QUESTIONS