



PRESENTATION

# JAIL FEASIBILITY STUDY

RFP #21RFP206340K-BKJ



March 1, 2023

# Response to Board of Commissioners Comments and Requests for Clarification

On February 1, 2023, the Fulton County Jail Feasibility Study Team presented its findings and recommendations to address the future of the Fulton County Jail to the Board of Commissioners. During this presentation, there were several requests from the Commissioners for clarification and additional information. The following slides present the responses from the Feasibility Study Team as well as corresponding slide updates.

# Commissioners Questions

## ***1. Clarify the number of persons in custody with unindicted felony charges.***

Our analysis of the data available (from a merge of the Jail database and the Courts database) indicates that there are an average 1,600 people who have an unindicted charge at the Fulton County Jail. Of that number, approximately 860 have no indictment. This measure was not included as a variable in our forecast models and therefore does not affect the projections of future populations, as they are primarily driven by the number of Bookings and the Average Length of Stay (ALOS).

## ***2. Slide 8: Update Population projections for Fulton County.***

We have updated this slide to accurately reflect the current population projections by the Georgia Governor's Office of Planning and Budget (Attachment A).

# Key Assumptions of Jail Population Forecast

- RFP requested a 25-year projection through 2047
- 2037 reflects construction for housing with support infrastructure for 2047
- Additional housing can be constructed if needed to meet 2047 bed needs

		2019	2022	2037	2047
Status Quo Forecast	<b>Bookings (Average Per Day)</b>	68.3	52.7	82.5	90.4
	<b>Average Length of Stay (Days)</b>	39.2	58.9	60.7	59.4
Moderate Forecast	<b>Bookings (Average Per Day)</b>	68.3	52.7	80.4	87.8
	<b>Average Length of Stay (Days)</b>	39.2	58.9	51.9	51.2
Optimal Forecast	<b>Bookings (Average Per Day)</b>	68.3	52.7	80.4	87.8
	<b>Average Length of Stay (Days)</b>	39.2	58.9	42.9	43.0
All Models	<b>Fulton County Population</b>	1,063,937	1,105,574	1,290,360	1,393,700
	<b>Metropolitan Atlanta Population</b>	4,810,231	4,982,924	5,819,113	6,267,538

All forecast scenarios assume:

- Estimated bookings will grow beyond historical levels
- Fulton County/Metro Atlanta populations will continue to grow

2019 Population Source: U.S. Census Bureau, Annual Estimates of the Resident Population for Counties in Georgia: April 1, 2010 to July 1, 2019 (CO-EST2019-ANNRES-13); 2022, 2037, 2047 Population Source: Georgia Governor Office of Planning and Budget

# Commissioners Questions

***3. Slide 15: Break down the categories of the 1,984 medical and mental health beds.***

The architectural macro space program plans for 392 medical beds and 1,592 mental health beds. A more detailed breakdown is attached (Attachment C).

***4. Slide 15: Break down the 5,480 beds into their components and classifications.***

This breakdown is attached (Attachment C). For planning purposes, the Moderate Improvement Scenario provides the men's bed needs for 2037 and the infrastructure, medical/mental health and women's bed needs for 2047. This plan creates flexibility for further expansion if needed, based on the outcomes of continued improvements in the criminal justice system.

Attachment C: Fulton County Jail 5,480 Bed Distribution

# Bed Distribution Breakdown

Housing Category	Men	Women
Reception ≤72 Hours	192	--
Reception ≤72 Hours   Protective Custody	--	64
General Population (GP) - Minimum	360	--
GP Medium	2,176	--
GP Minimum   GP Medium	--	64
GP High   Maximum   Close	288	--
GP High   Maximum   Close & Restrictive Housing	--	32
Protective Custody	96	--
Restrictive Housing	128	--
Youth	48	48
Mental Health Acute	480	120
Mental Health Subacute	256	64
Special Needs	504	168
Skilled Nursing	56	--
Medical Detoxification	48	--
Medical General Population	240	--
Medical Housing: Skilled Nursing Medical Detoxification Medical GP	--	48
<b>Total Housing - Beds</b>	<b>4,872</b>	<b>608</b>

# Commissioners Questions

***5. Slide 16: Simplify this slide. Compare both people and beds for the existing and proposed jail.***

This slide is revised for clarity and consistency and is attached (Attachment B).

# New Jail Increases Beds and Square Footage

## EXISTING FACILITIES

(Rice Street Jail and Union City)

**2,510**

Beds

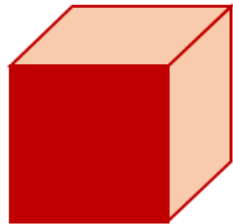
**203**

GSF / Bed

**510,000**

Gross Square Feet

2022 Actual ADP: 3,300



## NEW JAIL

**5,480**

Beds

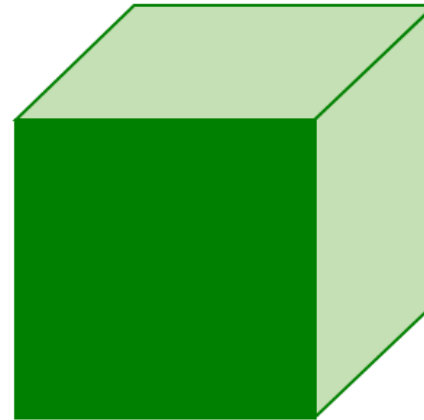
**398**

GSF / Bed\*

**2,182,500**

Gross Square Feet

2037 Projected ADP: 4,455



\* Complies with ACA and National Standards



# Commissioners Questions

## ***6. Slide A6: Address comparable county incarceration rates in relation to Fulton County.***

This slide previously showed current populations in comparison to current bed counts. The slide is now revised to compare incarceration rates across counties in 2021 (latest available datapoint) and for Fulton County in 2022 (Attachment D).

“*Comparable counties*” on this slide were defined as counties that are urban, with active or recent jail expansion projects, and counties for which the feasibility study team has some access to data. It was noted that these counties are not located in the Southeast, and thus were geographically not comparable with regional differences and other variables that would prove significant.

This slide had been moved to the Appendix because it is not directly relevant to the goal of defining Fulton County’s needs, or germane to the cost and location of the new facility.

## ***7. Indicate comparable incarceration rates for the counties adjoining Fulton County.***

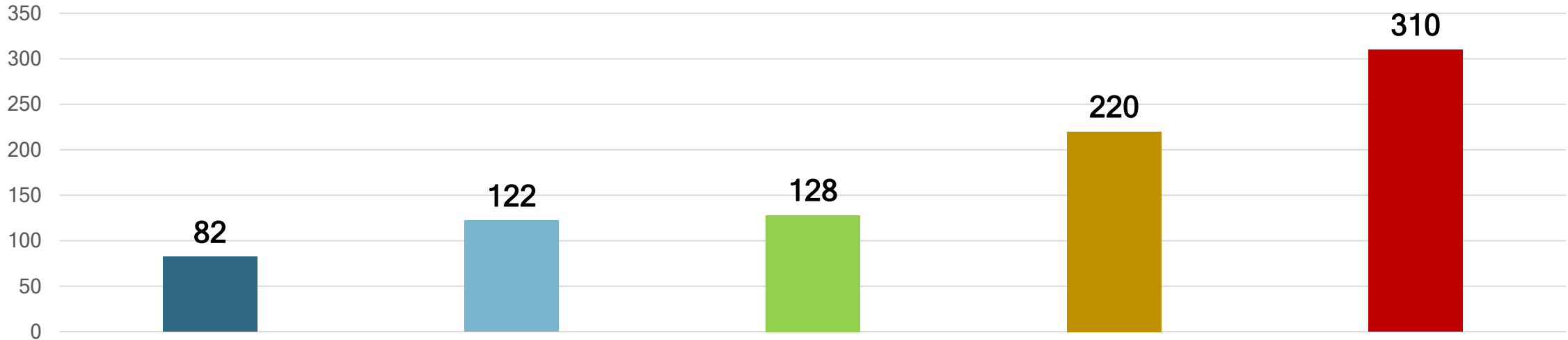
Based on data from the Georgia Department of Community Affairs, the attached new slide indicates that Fulton County’s rate is higher than that of adjoining counties, other than Clayton County which has a much smaller population (Attachment E).

## ***8. Indicate incarceration rates for those U.S. states with the highest incarceration rates nationally.***

Based on data from the Prison Policy Initiative, the attached new slide indicates that Georgia ranks fourth among U.S. states with the highest incarceration rates in 2021 (Attachment F).

# Incarceration Rates in Other Urban Counties

Incarcerated Population per 100,000 in Other Urban Counties with New Jails under Design/Construction

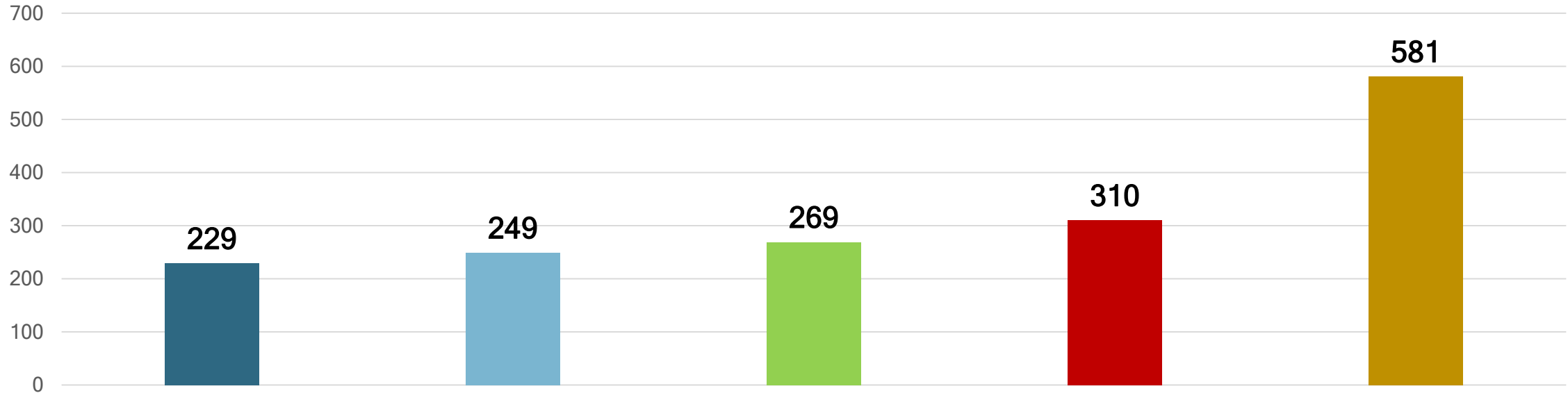


	Wayne County, MI (Detroit) 2021	Franklin County, OH (Columbus) 2021	Cuyahoga County, OH (Cleveland) 2021	Baltimore County and Baltimore City, MD 2021	Fulton County, GA (Atlanta) 2022
County Population	1,789,781	1,321,414	1,249,387	1,425,814	1,105,574
Jail Population (ADP)	1,466	1,615	1,596	3,141	3,426

**Data Sources:** County Populations (2021): U.S. Census Quick Facts; Fulton County Population (2022): Georgia Governor Office of Planning and Budget, <https://opb.georgia.gov/census-data/population-estimates>; ADPs (2021): DOJ Midyear Jail Survey 2021, <https://bjs.ojp.gov/data-collection/annual-survey-jails-asj>

# Incarceration Rates in Neighboring Georgia Counties

Incarcerated Population per 100,000 in Neighboring Georgia Counties



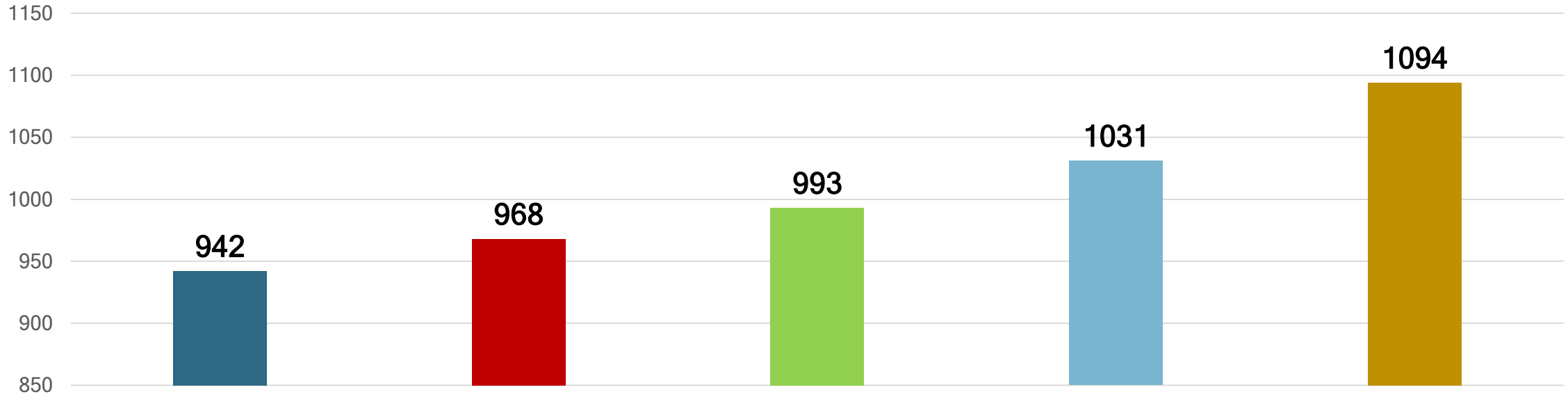
	Gwinnett County 2022	Cobb County 2022	DeKalb County 2022	Fulton County 2022	Clayton County 2022
County Population	966,057	779,374	776,792	1,105,574	299,405
Jail Population (ADP)	2,209	1,938	2,088	3,426	1,741

**Data Sources:** County Populations (2022): Georgia Governor’s Office of Planning and Budget, <https://opb.georgia.gov/census-data/population-projections>;

Jail Populations (December 2022): Georgia Department of Community Affairs, County Jail Inmate Population Report, [https://www.dca.ga.gov/sites/default/files/jail\\_report\\_dec22.pdf](https://www.dca.ga.gov/sites/default/files/jail_report_dec22.pdf)

# Highest Incarceration Rates in U.S. States

Incarcerated Population (Jails + Prisons) per 100,000 in Highest Ranking U.S. States



	Arkansas 2021	Georgia 2021	Oklahoma 2021	Mississippi 2021	Louisiana 2021
State Population	3,011,524	10,711,908	3,959,353	2,961,279	4,657,757
Total State Incarceration	28,377	103,722	39,325	30,534	50,934

**Data Sources:** Prison Policy Initiative, *Confined Populations by State and Type of Confinement (2021)*, [https://www.prisonpolicy.org/global/appendix\\_states\\_2021.html](https://www.prisonpolicy.org/global/appendix_states_2021.html)

# Commissioners Questions

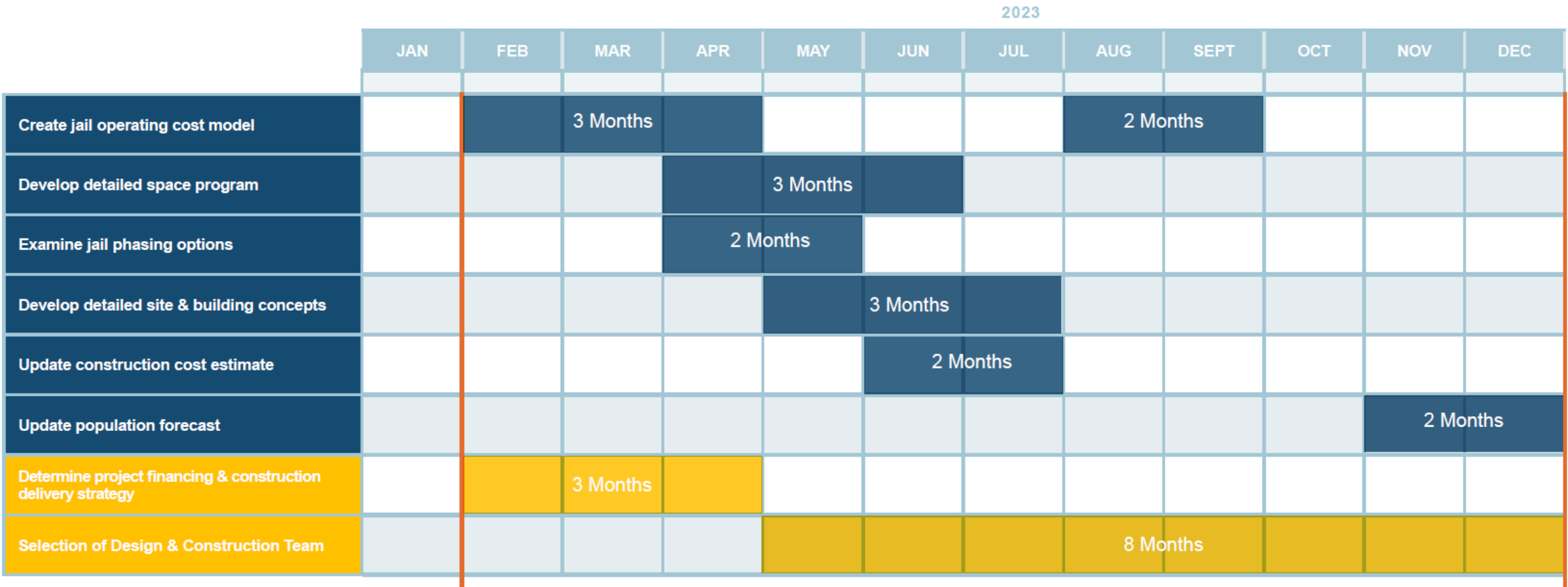
## ***9. List P3 justice and other public projects that are ongoing or recently completed in the US.***

There are currently 185 municipal social infrastructure P3 projects in the US.

Of those, 10 are criminal justice related:

- Alabama Prison Facilities
- Oahu Community Correctional Centre
- Long Beach Courthouse
- Baltimore City Circuit Courthouse
- Miami-Dade County Civil and Probate Courthouse
- Oregon Clackamas County Courthouse
- Maryland Courthouse
- Kansas Prison
- Indiana Police Station / Parking Garage

# Recommended Next Steps



★ Feasibility Study Contract Complete ( 02/01/23 )

★ Design Services Contract Begins ( 12/31/23 )

LEGEND  
 Additional consultant services  
 Solicitation

# THANK YOU QUESTIONS AND ANSWERS

