

# Fulton County COVID-19 Response Update

October 6, 2021  
BOC Meeting

# OVERVIEW

## Incident Response Update

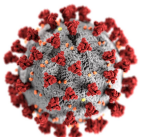
- Statistics
- Vaccination Response
- Mobile Vaccination Implementation

## Reopening Update

- COVID Facility Closures
- ERAP Phase II Update
- Vax or Test Initiative

## 2021 COVID Funding Update

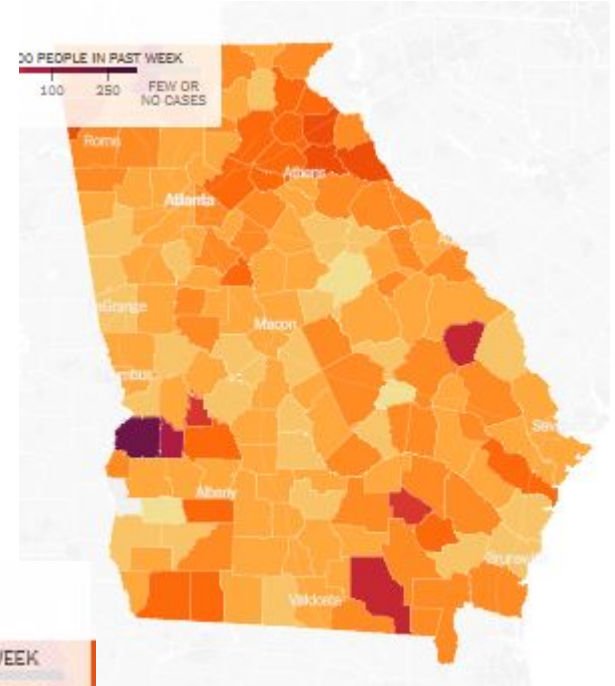
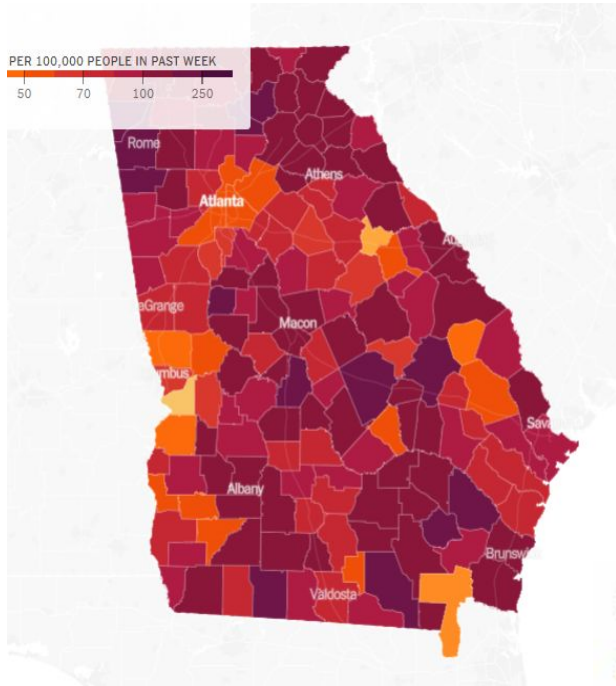
- Update - COVID 19 Reserve
- American Rescue Plan Spend Updates



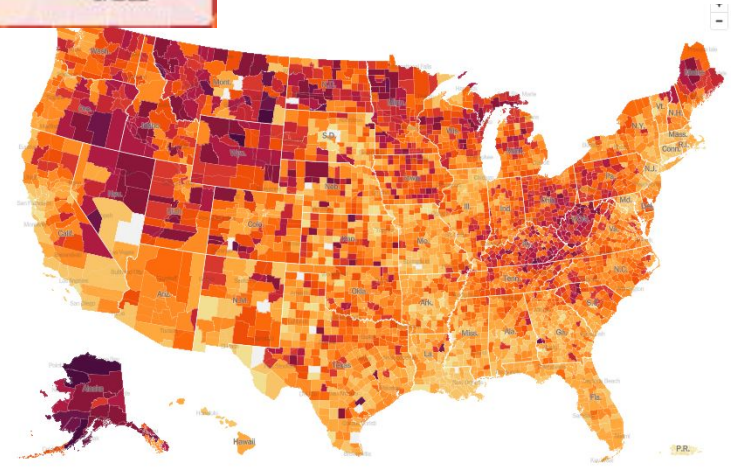
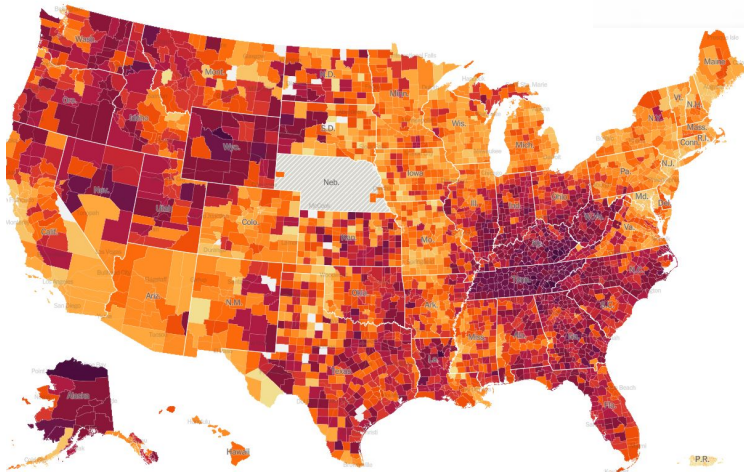
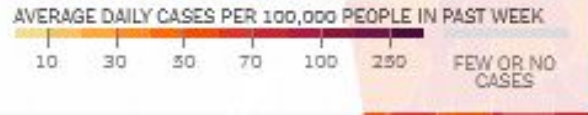
# INCIDENT RESPONSE REVIEW

- The 7-day average for cases, hospitalizations, and % positives peaked in early September and are all now trending downward.
- The 7-day average for deaths peaked on September 24th at 5.3, this metric is also trending downward.
- Fulton County hospitals are still experiencing dangerous hospital room shortages, due to high volumes of both covid and non-covid admissions.
- There are still very high numbers of covid patients on ventilators, in county hospitals.
- 2 of 4 major indicators on the Fulton County scorecard are still red.

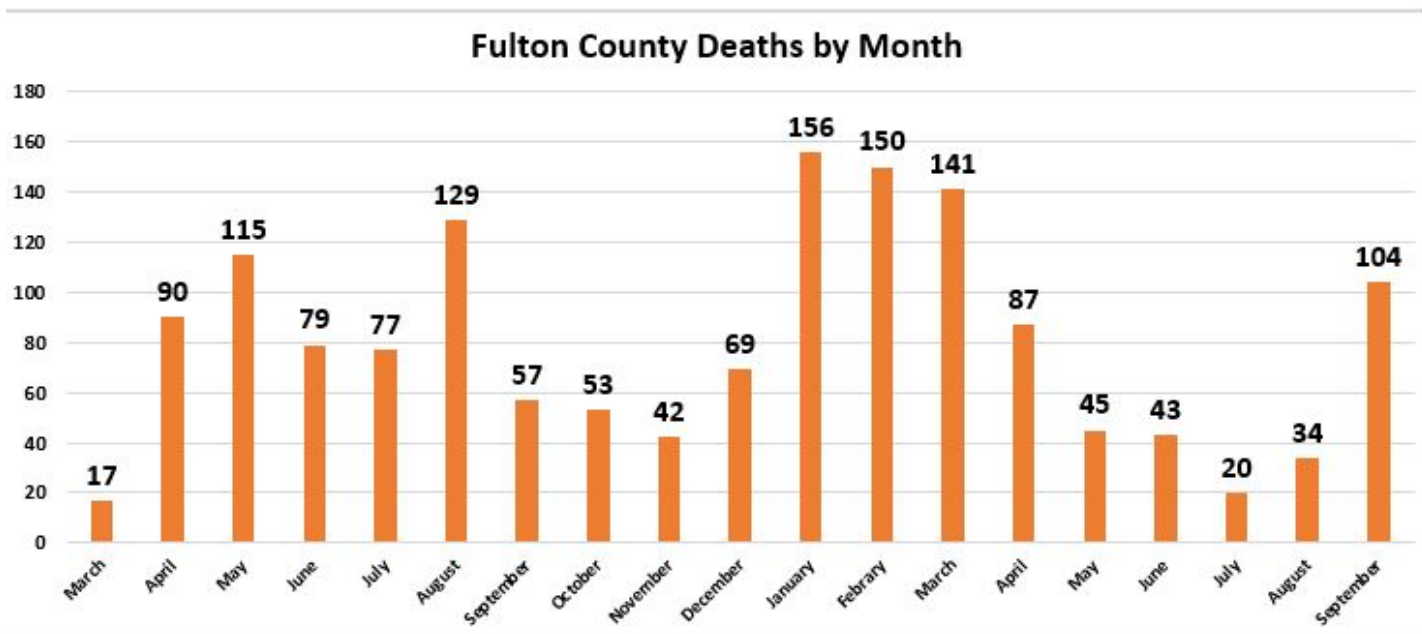
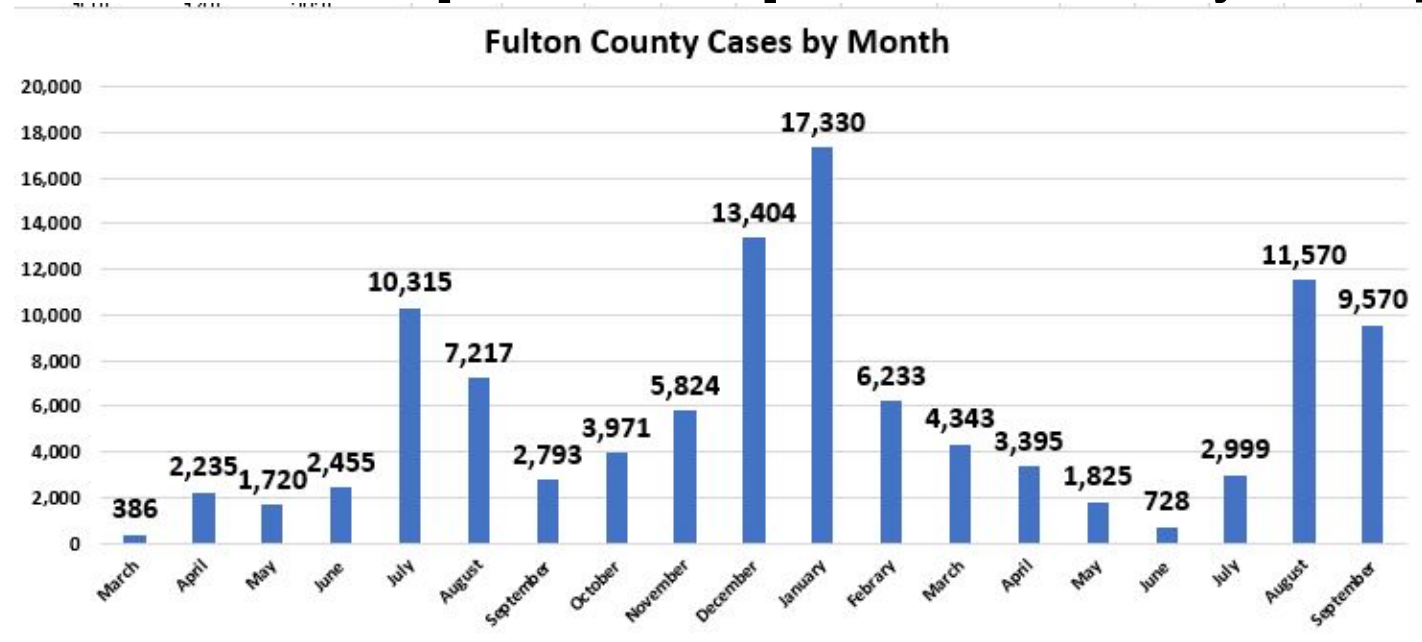
# Incident Response Update (Heat Maps) September 15 vs October 6



## Hot spots



# Incident Response Update Monthly Comparison





# Incident Response Update



## COVID-19 CASE COUNTS AND RATES BY CITY

	Recent 14-day reporting period <sup>1</sup>	Preceding 14-day reporting period	% Change from preceding 14 days (%) <sup>2</sup>	14-Day Incidence Rate <sup>3</sup>
	<i>9/11-9/24</i>	<i>8/28-9/10</i>		
Alpharetta	146	232	↓ 37.1%	225.8
Atlanta	1597	1966	↓ 18.8%	362.0
Chattahoochee Hills	11	<10	↑ 22.2%	383.7 <sup>4</sup>
College Park	39	61	↓ 36.1%	281.0
East Point	135	212	↓ 36.3%	386.0
Fairburn	69	111	↓ 37.8%	469.1
Hapeville	14	35	↓ 60.0%	212.7
Johns Creek	152	232	↓ 34.5%	181.7
Milton	124	171	↓ 27.5%	324.9
Mountain Park	<10	<10	↓ 66.7%	160.0
Palmetto	18	15	↑ 20.0%	411.7
Roswell	237	296	↓ 19.9%	251.4
Sandy Springs	239	270	↓ 11.5%	226.7
South Fulton	429	668	↓ 35.8%	451.0
Union City	114	199	↓ 42.7%	543.9

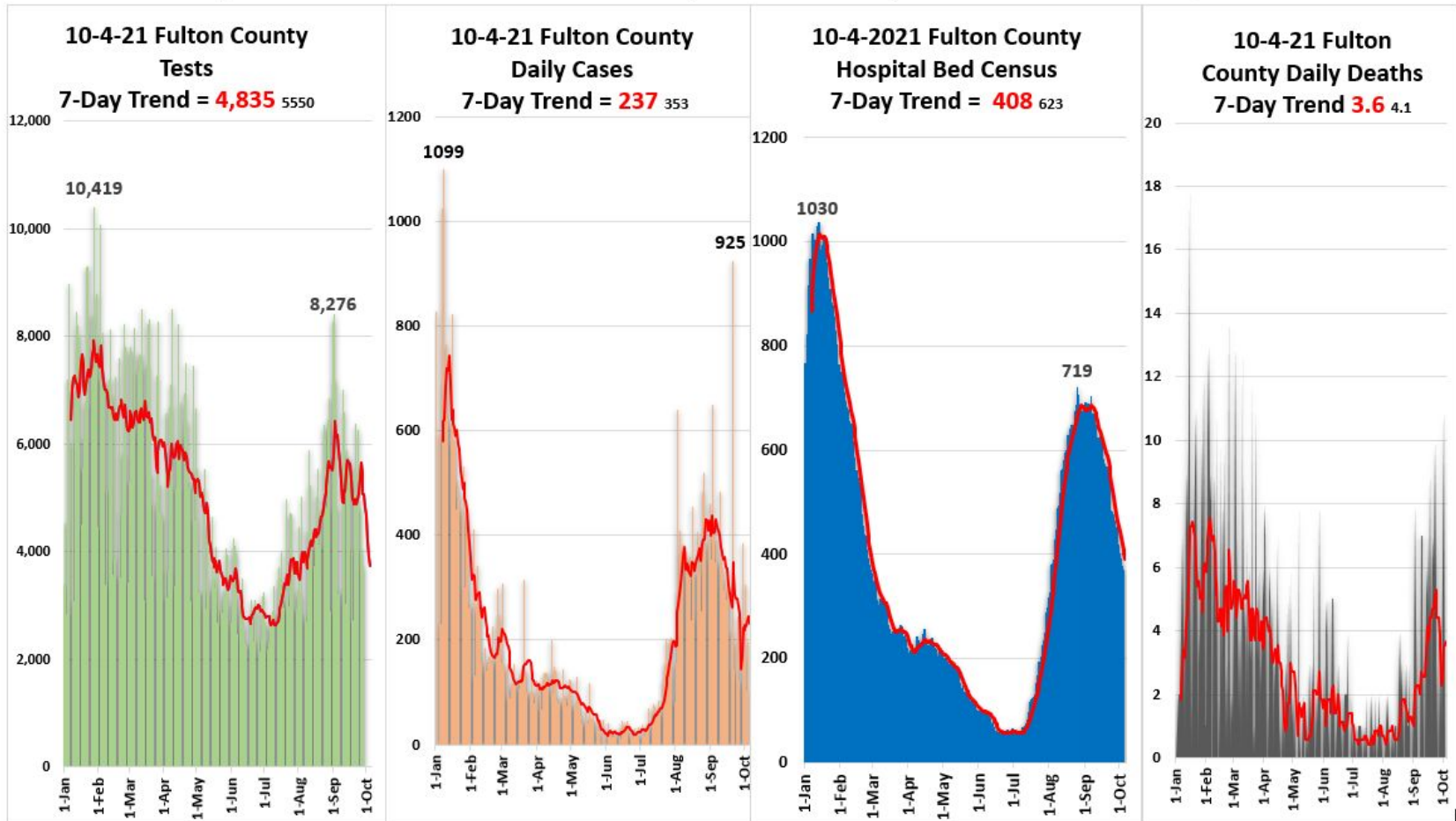
# Incident Response Update



- **Fulton County COVID-19**

- 7-day average for cases is **237**, down 33% since the last BoC mtg.
- 7-day average for % positive is **6.7%**, down 38% since the last BoC mtg.
- 7-day average, Hospitalizations is **408**, down 37% since the last BoC mtg.
- 7 day average, for deaths is **3.6**, up 38% since last BoC mtg.

Fulton County Dashboard 10-4-2021: New Tests = 3747 / New Cases = 197 / New COVID Census = 369 / New Deaths = 0



# Incident Response Update



## 10/4/21 Fulton County COVID-19 Scorecard

Metric	Status (7-day average) =+	Metric
Testing (Demand & Capacity)	* <b>4,835</b> ⬇️	Current capability is 8,000 / day Daily Testing: <b>over 2857</b> , <b>1428 - 2857</b> , <b>less than 1428</b>
Testing (Results)	<b>24-48 hrs</b> ⬆️	Time to receive results: <b>0 - 48</b> , <b>49 - 96</b> , <b>over 96</b>
Cases	* <b>237</b> <sub>353</sub> ⬆️	<b>Less than 20</b> , <b>20 – 74 a day</b> , <b>75 to 249</b> , <b>over 250</b>
Fulton positivity rate % +	* <b>6.7%</b> <sub>10.8</sub> ⬇️	<b>Less than 1%</b> , <b>1% - 5%</b> , <b>5% - 10%</b> , <b>over 10%</b>
Hospitalizations COVID census	* <b>408</b> <sub>643</sub> ⬇️	<b>Less than 50</b> , <b>50 – 200</b> , <b>201 - 349</b> , <b>over 350</b>
Hospital Bed Availability	* <b>13.5%</b> ⬆️ * <b>12.5% Adult</b>	Open Beds: <b>over 20%</b> , <b>15% - 20%</b> , <b>Less 15%</b>
Hospital CCU Bed Availability	* <b>14.8%</b> ⬆️ * <b>13.7% Adult</b>	Open CCU Beds: <b>over 20%</b> , <b>15% - 20%</b> , <b>less 15%</b>
Hospital Vent Availability	* <b>52.1%</b> ⬆️	Open Vents: <b>over 25%</b> , <b>15% - 25%</b> , <b>less 15%</b>
COVID Deaths	* <b>3.6</b> <sub>2.6</sub> ⬆️	<b>Less than .25</b> , <b>.25 – 2.5</b> , <b>2.5 – 5</b> , <b>over 5</b>
Morgue census	* <b>78</b> ⬇️	<b>Less Than 75</b> , <b>75 – 90</b> , <b>over 90</b>
COVID Vaccine Administered	<b>526,718 92%</b> ⬇️	<b>More than 75%</b> , <b>50% - 75%</b> , <b>less than 50%</b>



# VACCINATION RESPONSE

- Fulton County fixed & mobile vaccination sites reached the 527K vaccines administered mark.
- Fulton County mobile vaccination units have administered over 39K doses of vaccines.
- 4 mobile units will be at 19 locations this week.
- Vaccinations will continue to be available at these fixed locations: 6 Board of Health Clinics, 141 Pryor St, 4700 North Point, 5710 Stonewall Tell Rd. & starting 10/6 @ 3900 Aviation Cir.
- Key dates and topics for the FDA Advisory Committee are:
  - October 14: Moderna booster for individuals 18 and older
  - October 15: J&J booster for individuals 18 and older
  - October 26: Pfizer vaccine for children 5-11
- Planning a mega vaccination incentive event

# Vaccination Response

## GEORGIA

[Download Published Data](#)

### VACCINES ADMINISTERED

# ADMINISTERED

**10,544,914**

# ADMINISTERED PER 100K

**101,355**

### RESIDENTS VACCINATED

# At Least One Dose

**5,649,274**

% At Least One Dose

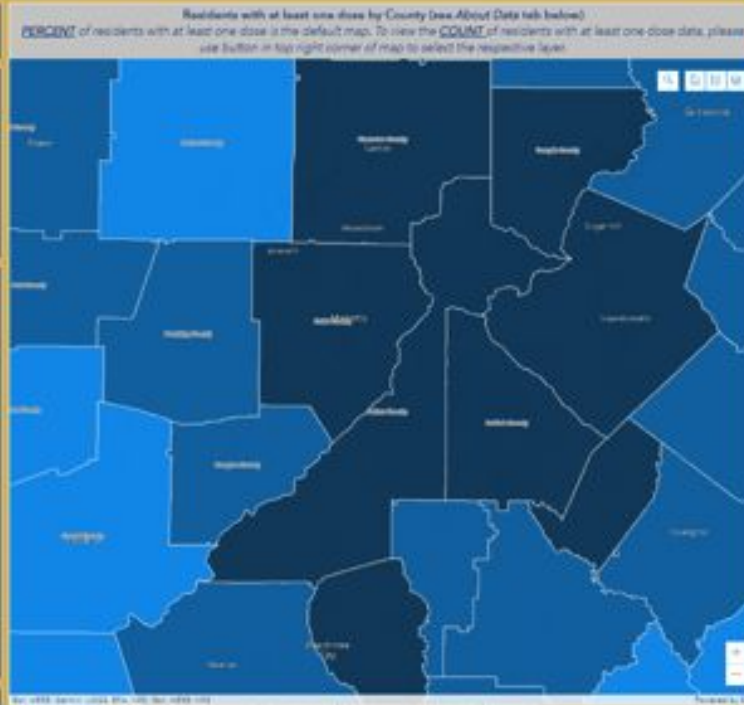
**54%**

# Fully Vaccinated

**4,947,667**

% Fully Vaccinated

**48%**



- Totals are extracted from the DPH GRITS System
- Totals represent % of total population
- The Fulton County totals for those eligible for vaccination is: 68% one dose & 62% fully vaccinated

## Fulton County

[Download Published Data](#)

### VACCINES ADMINISTERED

# ADMINISTERED

**1,174,287**

# ADMINISTERED PER 100K

**113,326**

### RESIDENTS VACCINATED

# At Least One Dose

**614,451**

% At Least One Dose

**59%**

# Fully Vaccinated

**549,750**

% Fully Vaccinated

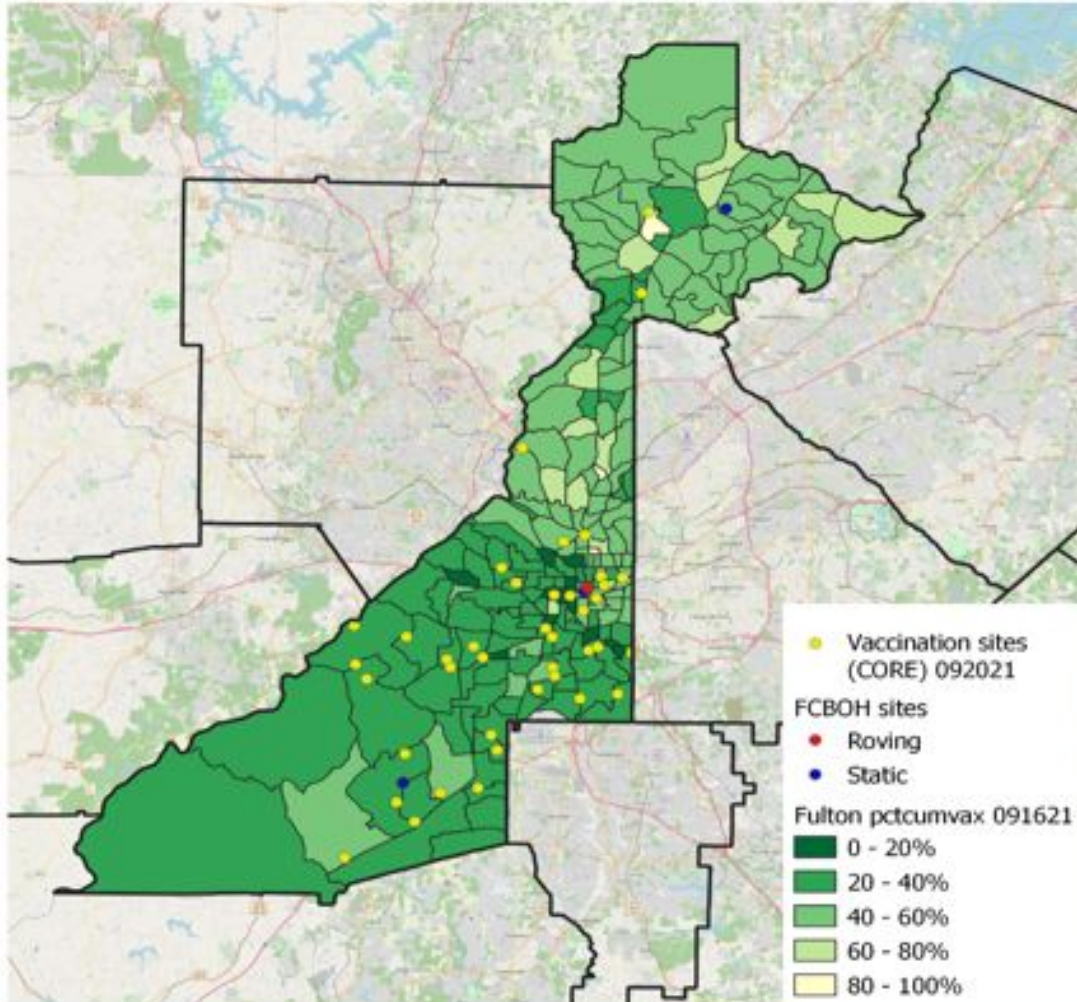
**53%**

# Mobile Vaccine Response Update



9

## Fulton County Map of Mobile Vaccination Sites (6/1 - 9/30)



Race		
	Number	Percentage
Black	6,605	73.50%
White	1,691	5.65%
Asian	229	2.55%
Native American	42	0.47%
Hawaiian or Pacific Islander	17	0.18%
Hispanic	1393	15.50%
Prefer Not to Say	222	2.34%
No Response	0	0%

Number of vaccines administered = 10,182

Number of events supported = 846

Number of unique sites visited = 512

# Vaccination Response

## July - September Vaccination Deployment Posture

- **3 Fixed locations (combined capacity 200 Vax per day):**
  - 141 Pryor St.
  - 4700 North Point Pkwy.
  - 5710 Stonewall Tell Rd.
- **10 Mobile Units (combined capacity 750 Vax per day) = 50 events a week**
- **3 Roving Strike Teams Conducting vaccine outreach & vaccine delivery in the lowest census tract communities**

## October 1st Vaccination Deployment Posture

- **4 Fixed locations (combined capacity up-to 900 Vax per day, as demand dictates):**
  - 141 Pryor St.
  - 4700 North Point Pkwy.
  - 5710 Stonewall Tell Rd.
  - 3900 Aviation Cir  
(Opens 6 October)
- **4 Mobile Units (combined capacity 300 Vax per day) = 20 events a week**

- ❖ *Shift back to more capacity at fixed locations for booster delivery & planned expansion to 5 and over populations.*
- ❖ *All sites will continue to prioritize 1st and 2nd doses.*
- ❖ *Unified Area Command is continuing to look at ways to incentivise the unvaccinated.*



# Vaccination Response

## WHO QUALIFIES FOR COVID-19 BOOSTER SHOTS?



Got second shot of Pfizer COVID-19 vaccine at least 6 months ago



Meet CDC Approved Criteria:

### Recommended

- Age 65+ & residents in long-term care settings
- Age 50–64 with underlying medical conditions

### May receive based on individual benefits and risks

- Age 18–49 with underlying medical conditions
- Age 18-64 at increased risk for COVID-19 exposure due to occupational or institutional setting

**#VaxUpFulton**

# Mobile Vaccination: Sites this week

8

## Fulton Sites/Events (10/4 - 10/10)

Oct 4	Oct 5	Oct 6	Oct 7	Oct 8	Oct 9	Oct 10
Atlanta History Center - Buckhead	Elizabeth Baptist Church	Mary Parker Foundation	City of Atlanta (Dept of Public Works)	City of Fairburn Municipal Court	Creekside High School	Giving Kitchen Pop-Up Doc
	National Night Out – Union City	Sandy Springs City Hall	IKEA - Atlanta	IKEA - Atlanta	Tri-Cities High School	
	Zion Hill Baptist Church	Starbucks – Peachtree St	Impact Church	SCAD - Atlanta		
		Villages at Carver Apartments	Terminus Commons	The New Georgia Project		



# TARGETED OUTREACH: CLOSING THE VACCINE EQUITY GAP



## RACE

40.2% of Black residents have received at least 1 dose, compared to 57.6% of White residents

## GEOGRAPHY

8 Census tracts within Fulton County have <20% residents with at least 1 dose.

## AGE

52% of 20 - 24% year olds have received at least 1 dose, compared to 71.2% of 45 – 54 year olds

## OUR APPROACH

### ACCESS

- Community-based locations
- Non-traditional hours (Third shift)
- Language access
- Disability access
- Parent-friendly

### INCENTIVES

- Give-aways
- Entertainment
- Refreshments
- Prizes

### EDUCATION

- Town Hall meetings
- Conversation Guides
- “Myth Busting” collateral and video

### TRUSTED VOICES

Municipalities | Elected Officials | School Systems  
Nonprofits | Media  
Small Businesses | Community Orgs  
Faith Partners  
Youth Organizations



IMPACT CHURCH



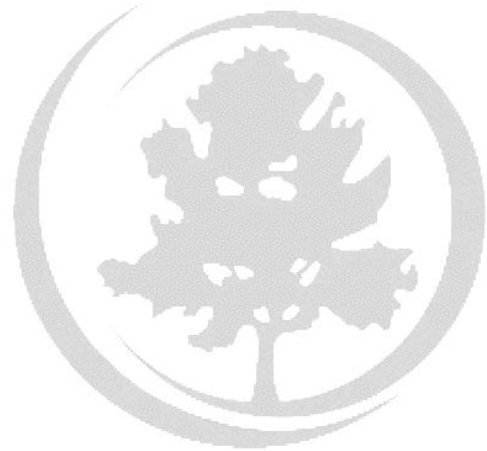
# SAMPLE OF COMMUNITY EVENTS & PARTNERSHIPS



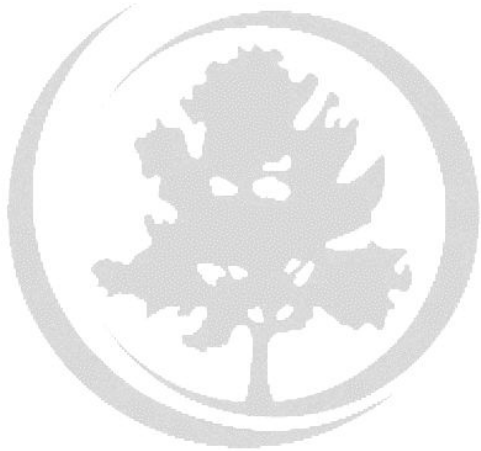


# Questions?





# **Fulton County Government Reopening Plan**

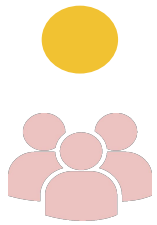


# QUESTIONS

# Gating Criteria

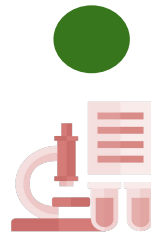
## Reopening Indicators

### CASES



Downward trajectory in the 7-day average of new positive tests within a 14-day period, and positivity rate below 5%

### VAX OR TEST

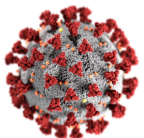


Ability to vaccinate employees to 80% goal and to test employees who choose alternative with results within 48-72 hours

### EQUIPMENT



PPE and supplies for all employees interacting with public.



*\*Satisfy Before Proceeding to Phased Comeback*



# COVID POSITIVE EMPLOYEES

<b>LAST 2 WEEKS</b>	
<b>DEPARTMENT</b>	<b>POSITIVE</b>
COMMUNITY DEVELOPMENT	1
EMERGENCY SERVICES	1
FINANCE	1
LIBRARY	1
MEDICAL EXAMINER	2
POLICE	1
PUBLIC WORKS	6
REGISTRATION & ELECTIONS	1
STATE COURT-ALL JUDGES	1
SUPERIOR COURT-GENERAL	2
TAX ASSESSOR	5
TAX COMMISSIONER	2
<b>GRAND TOTAL</b>	<b>24</b>

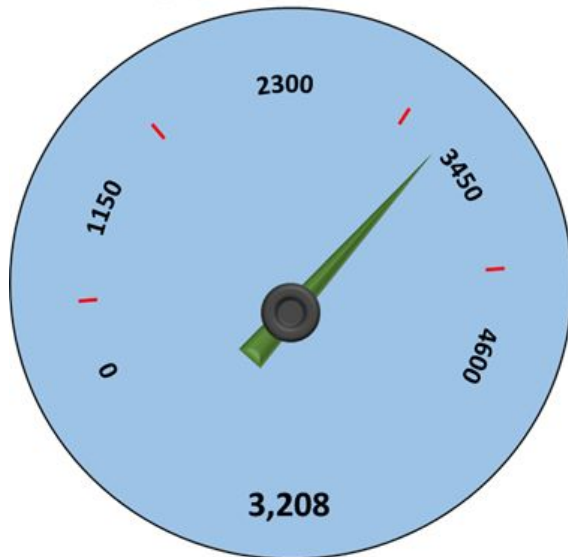
# COVID POSITIVE EMPLOYEES

<b>CUMULATIVE</b>			
<b>DEPARTMENT</b>	<b>POSITIVE</b>	<b>DEPARTMENT</b>	<b>POSITIVE</b>
ARTS/COOP EXTENSION	1	LIBRARY	30
BHDD	4	MAGISTRATE COURT	3
BOARD OF HEALTH	28	MEDICAL EXAMINER	4
BOARD OF COMMISSIONERS	2	POLICE	11
CLERK OF SUPERIOR COURT	51	PROBATE COURT	6
COUNTY ATTORNEY	3	PUBLIC DEFENDER OFFICE	5
COUNTY MANAGER	2	PUBLIC WORKS	42
COUNTY MARSHAL	12	PURCHASING	3
COMMUNITY DEVELOPMENT	3	REGISTRATION & ELECTIONS	6
DISTRICT ATTORNEY	17	SENIOR SERVICES	9
DREAM	26	SHERIFF	5
EMERGENCY MANAGEMENT	2	SOLICITOR GENERAL	5
EMERGENCY SERVICES	42	STATE COURT-ALL JUDGES	3
EXTERNAL AFFAIRS	2	STATE COURT-GENERAL	6
FINANCE	9	SUPERIOR COURT-ALLJUDGES	4
HUMAN RESOURCES	2	SUPERIOR COURT-GENERAL	30
INFORMATION TECHNOLOGY	5	TAX ASSESSOR	28
JUVENILE COURT	22	TAX COMMISSIONER	38
<b>GRAND TOTAL</b>			<b>471</b>

# Return to Office Plan

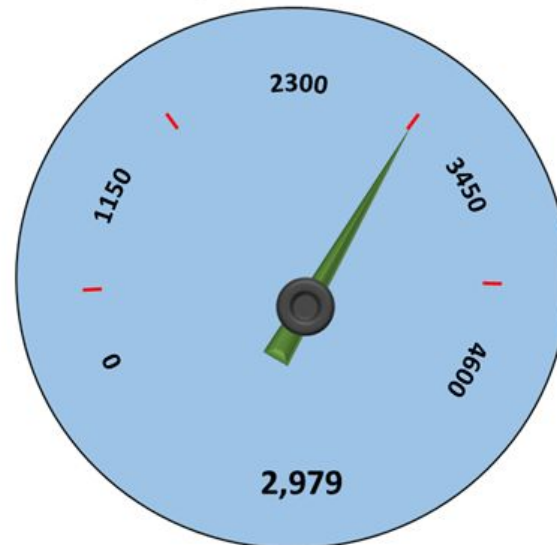
## Employee Vaccination Incentive Program

### Applications



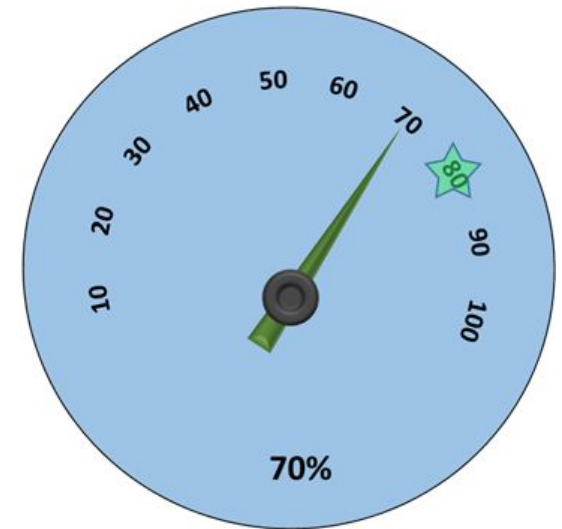
September 13<sup>th</sup> - 2,966  
August 30<sup>th</sup> - 2,866  
August 18<sup>th</sup> - 2,788  
August 2<sup>nd</sup> - 2,709  
July 12<sup>th</sup> - 2,560  
June 14<sup>th</sup> - 2,291  
May 31<sup>st</sup> - 2,056

### Approved



2,772  
2,624  
2,526  
2,484  
2,353  
2,102  
1,894

### Vaccination %



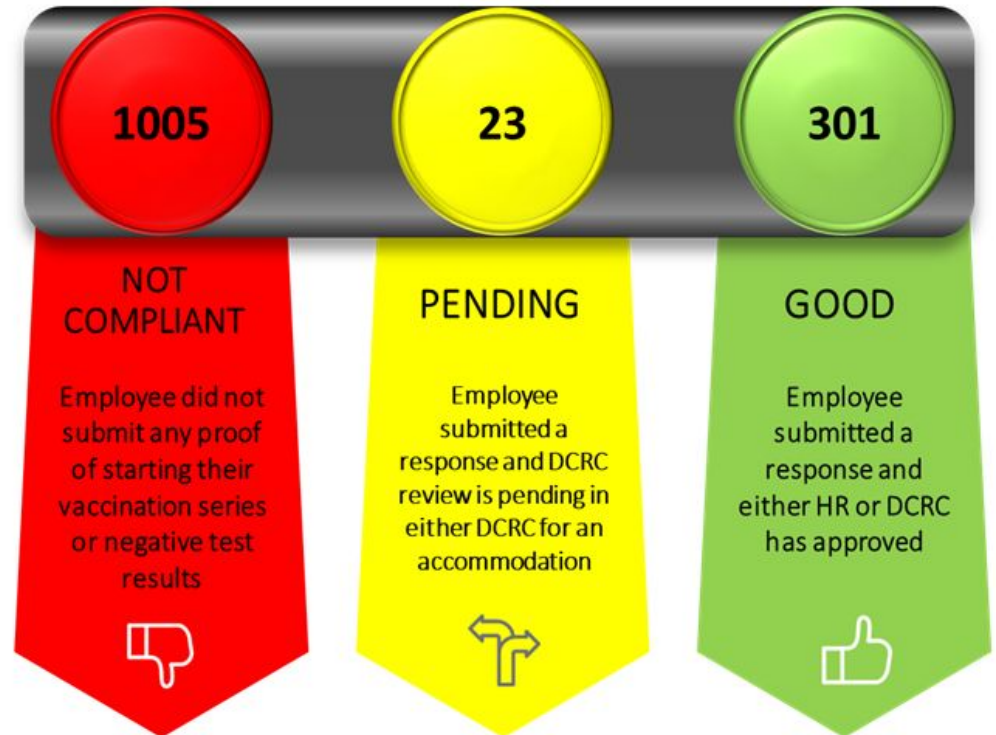
62%  
59%  
56%  
55%  
52%  
47%  
42%

# Employee Compliance with Vaccination & Testing Policy

## How have we educated the workforce about the policy?

- Distributed policy to Department Heads
- Educated via FulcoNews
- Educational session led by Dr. Paxton
- Created information portal
- Held meeting with managers on their responsibility.
- Emails weekly to unvaccinated employees with policy & link

## 1,329 Unvaccinated Employees





# COVID-19 Facility Closures

July to September 2021

Department /Locations (Library)	Number of COVID Positive Cases	Closure Date /Period	Closure Duration
Library - Buckhead	1	8/13-8/14/2021	2 Days*
Library- East Atlanta	1	1/5/2021	6.5 hours
Library- Fairburn	1	1/15/2021	6 hours
Library- Joan P. Garner @ Ponce de Leon	1	8/5/2021	1 Day
Library- Northwest @ Scotts Crossing	4	8/11-8/23/2021	11 Days*
Library- Ocee	1	9/15/2021	2.5 hours
Library-Sandy Springs	5	8/13-8/14/2021	2 Days*

Department /Locations (Dept. of Senior Services )	Number of COVID Positive Cases	Closure Dates / Period	Closure Duration
DSS – Mills Senior Center	1	7/19/21	1 Day
DSS- Darnell Senior Center	1	8/5-6/2021	1 Day
DSS-Darnell Senior Center	1	8/9-23/2021	14 Days
DSS- Dogwood Senior Center	1	8/22-9/5/2021	14 Days

\* Includes partial days

# Emergency Rental Assistance

## Phase II Snapshot

### QUICK STATS

**14,087** Applications initiated

**7,154** Applications submitted

**4,794** Applications adjudicated

**Assistance Disbursed During Phase II**

**\$9.20M**



# QUESTIONS



# Department of Community Development

## Community Services Program (CSP) Proposed Revisions to CSP Operational Framework

October 6,  
2021



# New CSP Service Category - Health and Wellness

---

CSP will address six (6) Service Categories: Children & Youth Services, Disabilities, Economic Stability/Poverty, Homelessness, Senior Services, **and Health and Wellness.**

## **Health and Wellness Priorities:**

- Prevent illness and health disparities by educating and connecting individuals to available resources.
- Programs addressing mental health, depression, stress, trauma and anxiety among individuals.
- Programs focusing on HIV Prevention and Education.
- Programs focusing on affordable housing, job training, and access to medications for persons with HIV.
- Programs focusing on financial literacy and wellness.





# CSP County Defined Performance Measures for Health and Wellness

---

Respondents to the RFP will be required to select and report on a minimum of one County defined performance measure throughout the contract period, in addition to reporting on a minimum of one agency defined performance measure. The CSP performance measure(s) selected must align with the primary service category for which funding is being requested.

## **Health and Wellness County Defined Performance Measures:**

- Number of individuals connected to available resources to help mitigate illness and health disparities.
- Number of individuals receiving referrals to behavioral health and other supportive services.
- Number of individuals who report or demonstrate improved health-related outcomes or other “quality of life” measures.
- Number of individuals who report increased knowledge around reducing the risk of acquiring or transmitting HIV.
- Number of persons with HIV participating in programs focusing on affordable housing, and job training.
- Number of persons with HIV reaching viral suppression.
- Number of individuals participating in programs focusing on financial literacy and wellness.



# CSP Health and Wellness

---

Date	Action
<b>October 8, 2021</b>	<b>REQUEST FOR PROPOSAL(RFP) RELEASED</b>
<b>October 19 &amp; October 27</b>	<b>PRE-PROPOSAL CONFERENCE AND TECHNICAL ASSISTANCE WORKSHOPS</b>
<b>November 5, 2021</b>	<b>RFP SUBMISSION DEADLINE, 3;00 P.M.</b>
<b>February 2, 2022</b>	<b>2022 CSP RECOMMENDATIONS TO THE BOC</b>



# Use Case: Community Services Program

**Eligible Use Verified:** Yes

**Category:** Community Needs

**Projected Start Date:** July 2021

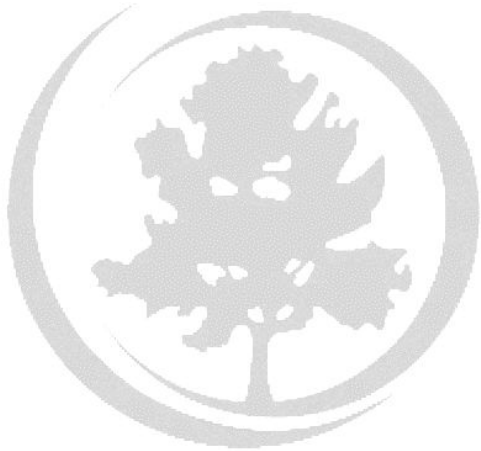
**Projected End Date:** December 2022

**Funding Requested:** \$8M

**Lead:** Pamela Roshell

Response to the ARPA funding notice	Summary of Agency Responses to the ARPA Funding Notice	ARPA Funding Amounts by Agency Status
<b>Accepted</b>	<b>139</b>	<b>\$7,119,020</b> <ul style="list-style-type: none"><li>• 92 paid- \$4,887,309</li><li>• 21 submitted for payment \$937,038</li></ul>
<b>Declined</b>	<b>21</b>	<b>\$974,335</b> <ul style="list-style-type: none"><li>• Health and Wellness RFP to be released October 15</li></ul>
		<b>\$8,093,355.11</b>





# **Emergency Response Reserve & American Rescue Plan Act Funds Update**

# COVID-19: Recovery Funds Plan

Economic Recovery and  
Operational Resiliency Plan  
September 30, 2021



# Consolidated Covid Response Plan

	9.10.2021		9.30.2021		9.10.2021		9.30.2021	
	Budget		Budget		Expenses		Expenses	
	Operational Plan -100% FEMA Reimb	Plan Changes	Operational Plan -100% FEMA Reimb	Operational Plan -100% FEMA Reimb	YTD Expenses	Expense Changes	YTD Expenses	YTD Expenses
<i>In Millions \$</i>								
<b>EERF - General Fund</b>	<b>\$ 14.9</b>	<b>-</b>	<b>\$ 14.9</b>	<b>\$ 14.9</b>	<b>\$ 9.6</b>	<b>\$ 0.2</b>	<b>\$ 9.8</b>	<b>\$ 9.8</b>
Communications	2.0	-	2.0	2.0	1.5	0.0	1.5	1.5
Child Care / Healthcare / Other	1.3	-	1.3	1.3	0.5	-	0.5	0.5
Payment to Employees	6.6	-	6.6	6.6	6.6	-	6.6	6.6
Information Tech - Virtual Support	2.0	-	2.0	2.0	-	-	-	-
2020 Obligation	3.0	-	3.0	3.0	1.1	0.1	1.2	1.2
<b>American Rescue Act</b>	<b>206.1</b>	<b>10.7</b>	<b>216.9</b>	<b>216.9</b>	<b>11.4</b>	<b>9.6</b>	<b>21.0</b>	<b>21.0</b>
Health Infrastructure	17.3	-	17.3	17.3	-	-	-	-
Pandemic Proof County Facilities	28.0	-	28.0	28.0	0.4	0.0	0.4	0.4
Day Porters / Cleaning	4.1	-	4.1	4.1	0.6	0.1	0.7	0.7
Child Care / Healthcare / Other	1.4	0.1	1.5	1.5	0.3	-	0.3	0.3
Premium Pay for Employees	3.4	-	3.4	3.4	3.4	-	3.4	3.4
PPE- County Employees	5.0	-	5.0	5.0	1.3	-	1.3	1.3
Court Backlog Project	75.0	-	75.0	75.0	0.4	0.3	0.7	0.7
Information Tech - Virtual Support	8.0	-	8.0	8.0	0.4	-	0.4	0.4
Safety Net Services - CSP	8.0	-	8.0	8.0	2.0	3.5	5.5	5.5
Long Term Revolving Loan Program	5.2	-	5.2	5.2	-	-	-	-
Food Insecurity	6.1	-	6.1	6.1	0.1	0.0	0.1	0.1
Job Training	2.7	-	2.7	2.7	-	-	-	-
ERAP 2	25.0	-	25.0	25.0	-	4.2	4.2	4.2
ERAP -1 and 2 Additional Operational Costs	8.6	-	8.6	8.6	2.3	1.4	3.7	3.7
Testing Vaccination	6.8	10.6	17.4	17.4	0.4	-	0.4	0.4
Vaccine Incentive Program	1.7	-	1.7	1.7	-	-	-	-
<b>Consolidated Appropriations Act</b>	<b>18.0</b>	<b>-</b>	<b>18.0</b>	<b>18.0</b>	<b>16.8</b>	<b>0.2</b>	<b>17.0</b>	<b>17.0</b>
ERAP 1	18.0	-	18.0	18.0	16.8	0.2	17.0	17.0
<b>FEMA Related Expenses</b>	<b>\$ 43.4</b>	<b>(10.6)</b>	<b>\$ 32.8</b>	<b>\$ 32.8</b>	<b>18.0</b>	<b>1.1</b>	<b>19.2</b>	<b>19.2</b>
<b>Projected Annual Uses</b>	<b>\$ 282.5</b>	<b>0.1</b>	<b>\$ 282.6</b>	<b>\$ 282.6</b>	<b>\$ 55.9</b>	<b>11.1</b>	<b>\$ 67.0</b>	<b>\$ 67.0</b>
<b>Reserve</b>	<b>\$ 49.7</b>	<b>(18.3)</b>	<b>\$ 31.3</b>	<b>\$ 31.3</b>				



# Cash Flow Projections – COVID 19 Response

In Millions \$

## Uses of Funds

	2021	2022	2023	2024	Total
<b>A EERF - General Fund</b>	14.9	-	-	-	14.9
<b>B American Rescue Act</b>	86.3	76.5	51.5	2.6	216.9
<b>C Consolidated Appropriations Act</b>	18.0	-	-	-	18.0
<b>D FEMA Related Expenses</b>	32.8	-	-	-	32.8
<b>Projected Annual Uses</b>	<b>\$ 152.1</b>	<b>\$ 76.5</b>	<b>\$ 51.5</b>	<b>\$ 2.6</b>	<b>\$ 282.6</b>

## Sources of Funds

	2021	2022	2023	2024	Total
<b>A EERF</b>	14.9	16.4			31.3
<b>B American Rescue Act</b>	128.4	103.4			231.8
<b>C Consolidated Appropriation Act</b>	18.0				18.0
<b>D FEMA Reimbursement at 100% over 2 years</b>	6.9	25.9			32.8
<b>Projected Annual Sources</b>	<b>\$ 168.2</b>	<b>\$ 145.7</b>	<b>\$ -</b>	<b>\$ -</b>	<b>\$ 313.9</b>

<b>Cash Balance EOY - 100% FEMA Reimbursement</b>	<b>16.1</b>	<b>85.3</b>	<b>33.9</b>	<b>31.3</b>	<b>31.3</b>
<b>Cash Balance EOY - 50% FEMA Reimbursement</b>	<b>12.7</b>	<b>68.9</b>	<b>17.5</b>	<b>14.9</b>	<b>14.9</b>

# Emergency Rental Assistance

## ERAP -1

### Funded - Consolidated Appropriations Act

#### Received - Mid/January 2021

*in Millions \$*

Regular

Allocation	Received by FC	YTD Expense
\$18.0	\$18.0	\$17.0

Expense does not include outstanding POs

## ERAP -2

### Funded - American Rescue Plan Act

#### Received - Mid/May 2021

*in Millions \$*

A - Regular

B - High Need

Allocation	Received by FC	YTD Expense
\$14.2	\$5.7	\$4.2
\$10.7	\$4.3	\$0.0

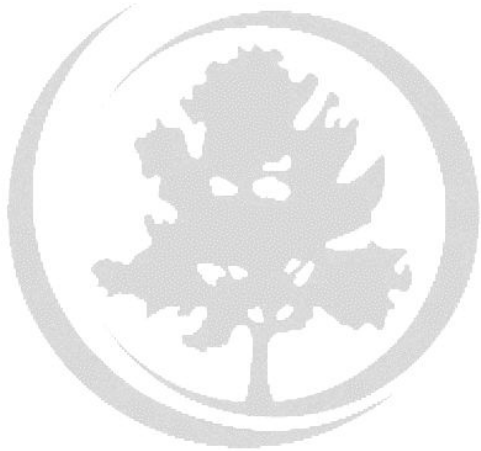
## ARPA - Admin. Supplement

County Allocation of ARPA funding for Administration

\$8.6	\$8.6	\$3.7
-------	-------	-------

<b>Total</b>	<b>\$51.5</b>	<b>\$36.6</b>	<b>\$25.0</b>
--------------	---------------	---------------	---------------





# QUESTIONS