

1 **A RESOLUTION APPROVING THE ACCEPTANCE OF SAPLINGS FROM TREES**
2 **ATLANTA, INC. FOR THE PURPOSE OF SUPPORTING THE JUVENILE COURT’S**
3 **COURTYARD OF SECOND CHANCES PROJECT LOCATED AT 395 PRYOR STREET**
4 **SW, ATLANTA, GEORGIA; AND FOR OTHER PURPOSES.**

5 **WHEREAS**, Fulton County, Georgia, (“Fulton County”) is a political subdivision of
6 the State of Georgia, existing as such under and by the Constitution, statutes, and laws
7 of the State; and

8 **WHEREAS**, Trees Atlanta, Inc. (“Trees Atlanta”) has agreed to donate several
9 saplings to the Fulton County Juvenile Court (“Juvenile Court”), located at 395 Pryor
10 Street SW, Atlanta, Georgia, to enhance the courtyard of the Juvenile Court building; and

11 **WHEREAS**, the Fulton County Department of Real Estate and Asset Management
12 has met with Juvenile Court and approved a detailed scope of work for landscape
13 services, as displayed in Exhibit A, attached hereto, as part of the Juvenile Court’s
14 Courtyard of Second Chances project; and

15 **WHEREAS**, Article 9, § 2, Par. 1(a) of the Georgia Constitution states, in part, that
16 “[t]he governing authority of each county shall have legislative power to adopt clearly
17 reasonable ordinances, resolutions, or regulations relating to its property, affairs, and
18 local government for which no provision has been made by general law and which is not
19 inconsistent with this Constitution or any local law applicable thereto”; and

20 **WHEREAS**, pursuant to Fulton County Code § 1-117, the Board of Commissioners
21 has exclusive jurisdiction and control over all county property.

22 **NOW, THEREFORE, BE IT RESOLVED**, that the Fulton County Board of
23 Commissioners hereby approves and accepts saplings from Trees Atlanta for the purpose
24 of furthering the Juvenile Court’s Courtyard of Second Chances project.


1 **BE IT FINALLY RESOLVED**, that this Resolution shall become effective when
2 adopted, and that all resolutions and provisions of the Code of Laws in conflict with this
3 Resolution are hereby repealed to the extent of the conflict.

4 **SO PASSED AND ADOPTED**, this 7th day of June, 2023.

5
6
7
8 **BOARD OF COMMISSIONERS**
9 **OF FULTON COUNTY, GEORGIA**

10
11
12
13 By: 
14 Robert L. Pitts, Chairman
15

16
17
18 **ATTEST:**

19
20
21 By: 
22 Tonya R. Grier
23 Clerk to the Commission
24



25
26 **APPROVED AS TO FORM:**

27
28
29 By: 
30 Y. Soo Jo
31 County Attorney

Juvenile Justice Center Courtyard: Conceptual Design

The Courtyard of Second Chances

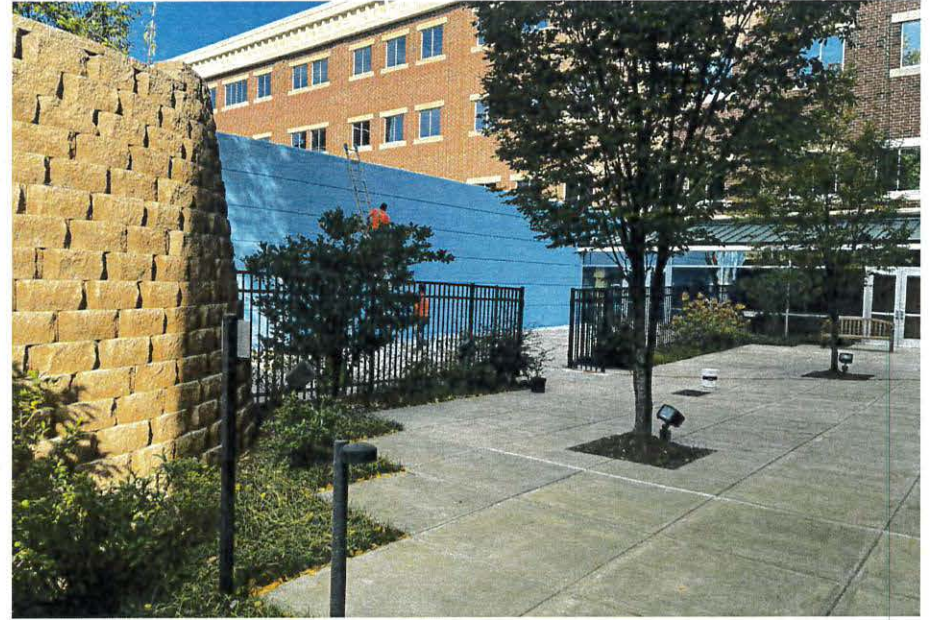
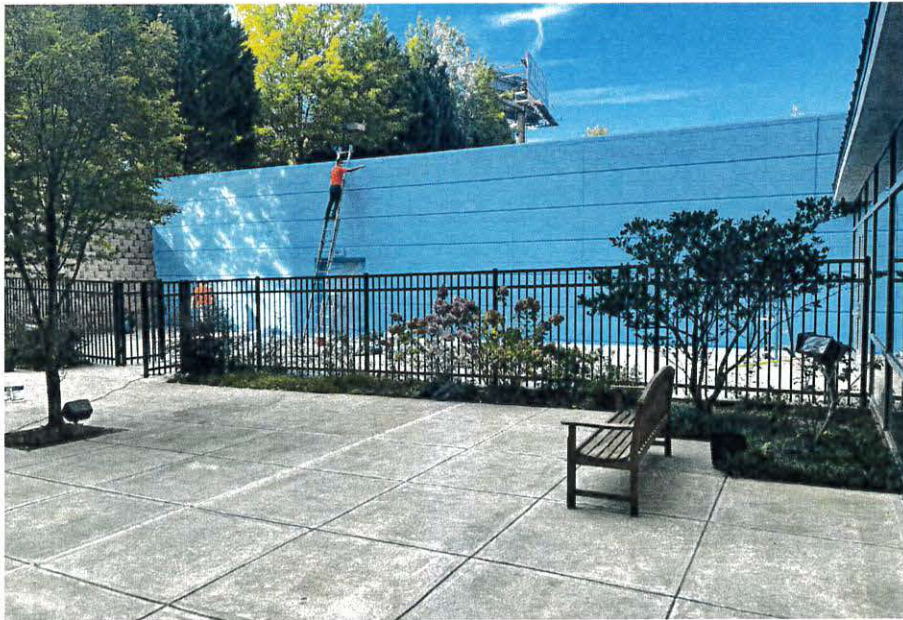


The site



Judge Romae T. Powell Juvenile Justice Center
395 Pryor St. SW, Atlanta, GA 30312

The site



Recent improvements include painting the wall in preparation of the mural, clearing damaged furniture, and pressure washing the concrete

Design Brief

- Use a trauma-informed design approach
- A space for justice involved families and staff
- Space for play, but not a 'traditional' play space
- Balance expectations on design within a justice setting with the desire for a colorful and therapeutic space

Context: Justice involved youth

- Most youth who are involved with the justice system have a history of childhood adversity
- 75%-93% are exposed to multiple types of violence and traumatic events before contact with the juvenile justice system¹
- Cognitive processing and self-regulation can be under-developed when daily survival skills become prioritized in a traumagenic environment.

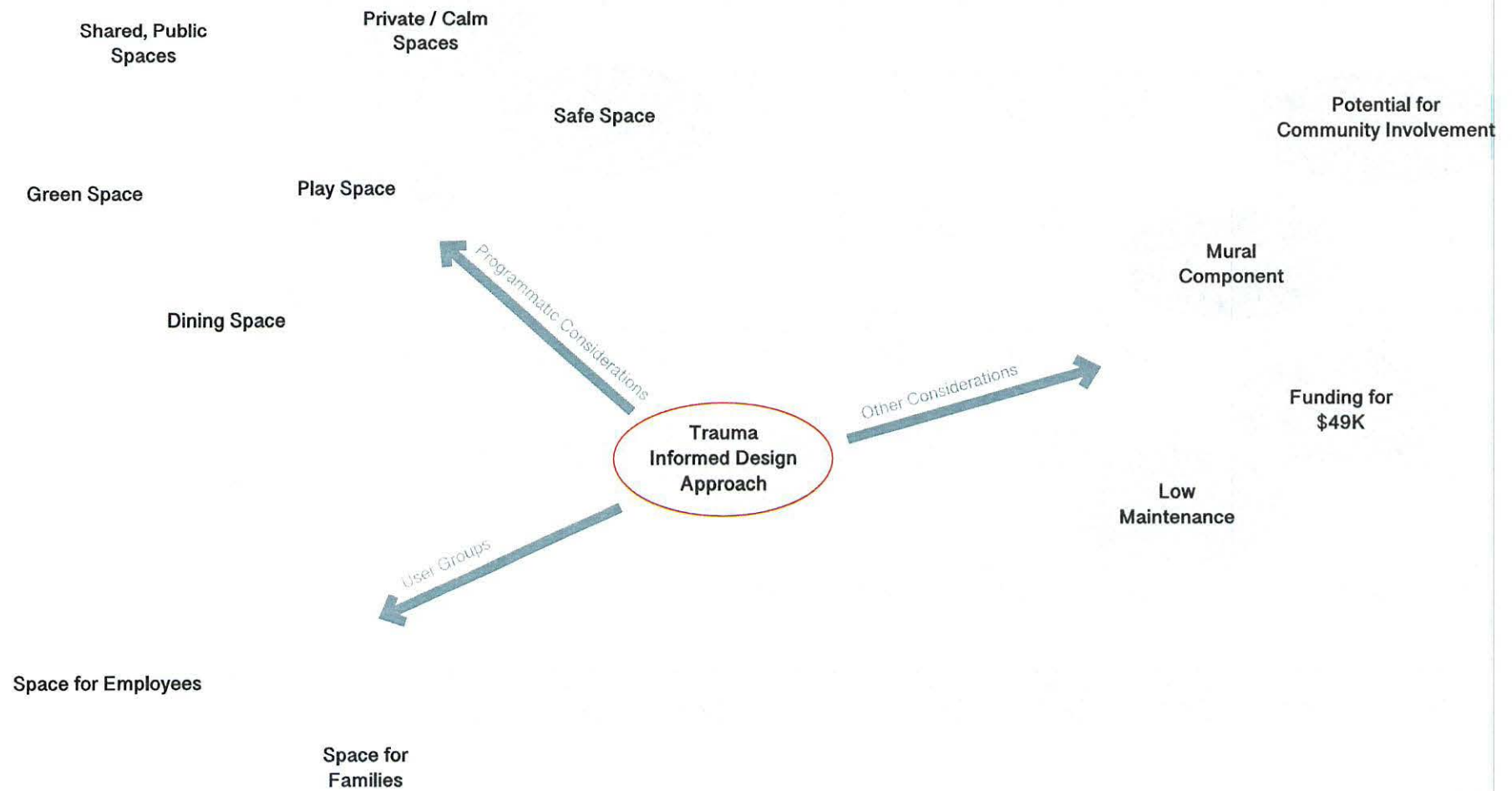
What is Trauma-informed design?

- Our surroundings directly inform our nervous, endocrine, and immune systems. For an individual with trauma, a poorly designed space can be particularly detrimental to their healing process.
- Cultivating an environment that recognizes the impact of traumatic childhood experiences while striving for a physically and psychologically safe environment for both youth and staff.
- The goal of trauma-informed design is to create environments that promote a sense of calm, safety, dignity, empowerment, and well-being for all occupants.

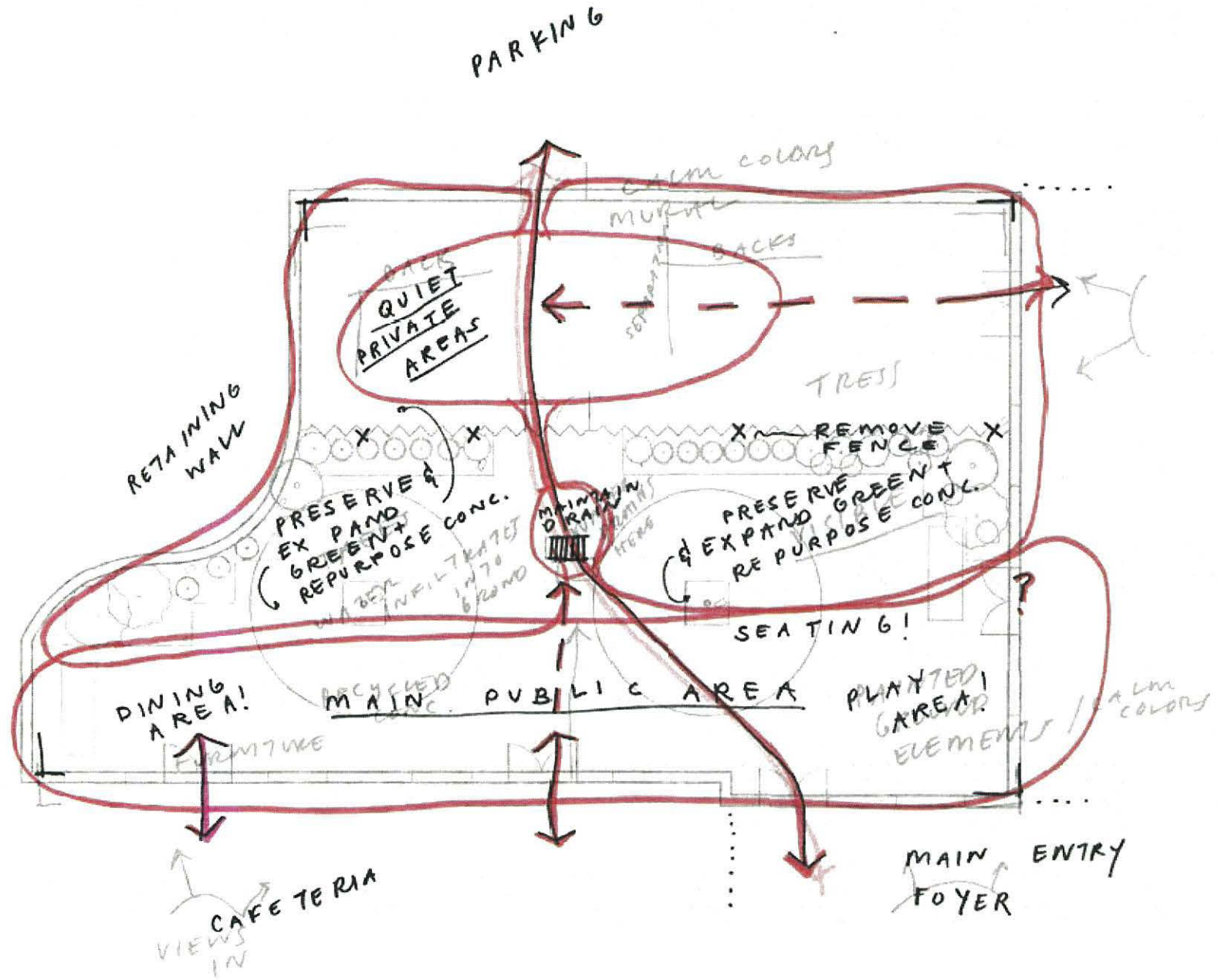
Source:

1. Baglivio, Michael T., Kevin T. Wolff, Alex R. Piquero, and Nathan Epps. "The Relationship between Adverse Childhood Experiences (ACE) and Juvenile Offending Trajectories in a Juvenile Offender Sample." *Journal of Criminal Justice* 43, no. 3 (2015): 229-41. <https://doi.org/10.1016/j.jcrimjus.2015.04.012>.

Project Goals

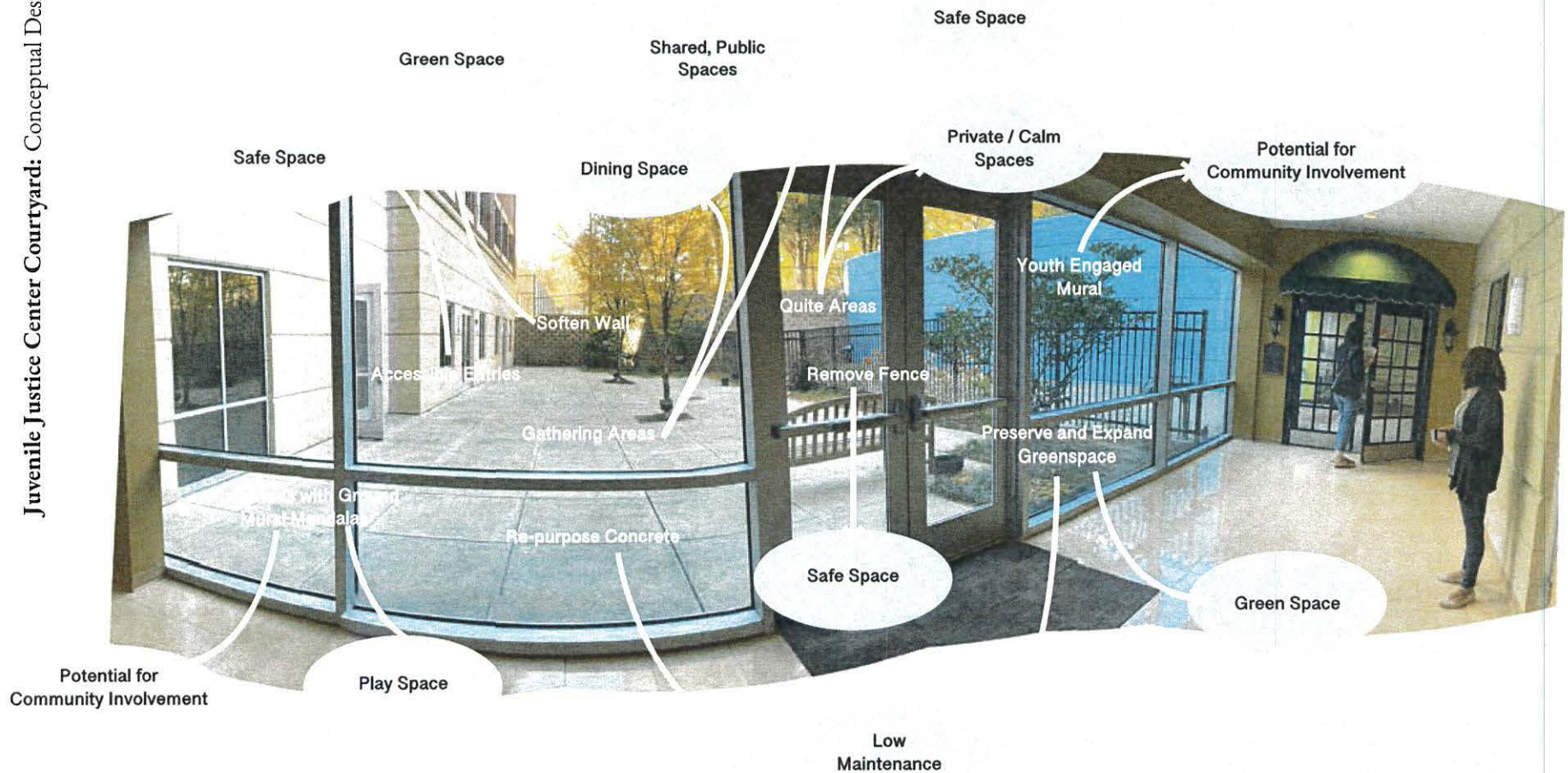


Courtyard of Second Chances Goals and Concept Review



Design Program Diagram

Juvenile Justice Center Courtyard: Conceptual Design



Courtyard of Second Chances Goals/Trauma Informed Design Overlay



Courtyard of Second Chances Murals and Community Involvement

Precedent / Inspirational Imagery



access to nature

dining space

visibility of
surroundings

group space

avoid sterile materials
and colors

variety of sound
options

independent vs.
crowded space
options

alleviate feeling of
unaccounted for
space

seating options

sunny / shady choices

allow people to make choices
about where they exist
in space

Precedent Program and Sense of Place Imagery

art

play space

activity space

remove visual clutter

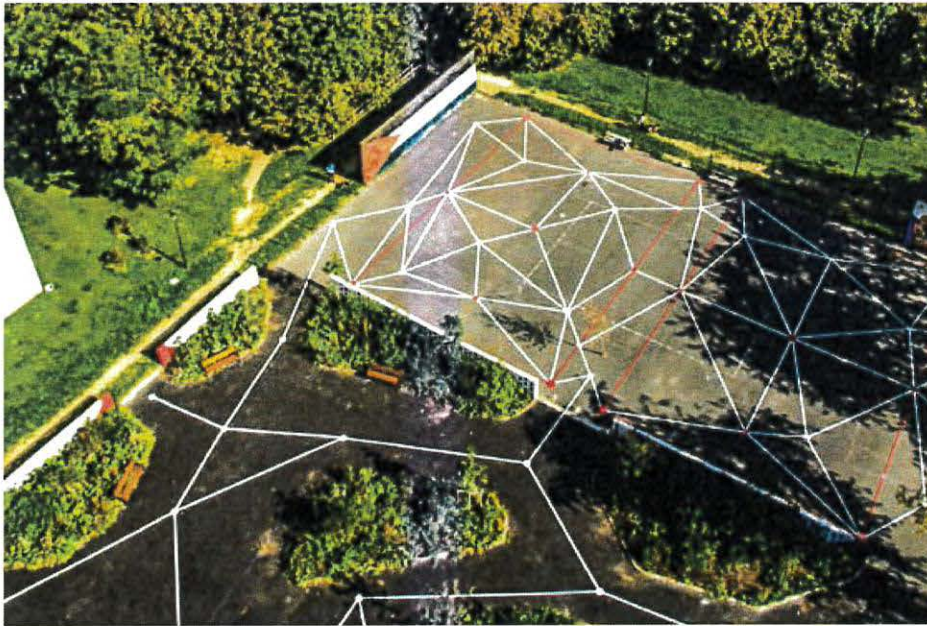
visibility of surroundings



avoid sterile materials and colors

calm colors

Precedent Program and Sense of Place Imagery



Coloco, Neighboring Gardens IVRY Montmousseau
Perforations in asphalt, plantings, play through ground murals, community design and implementation

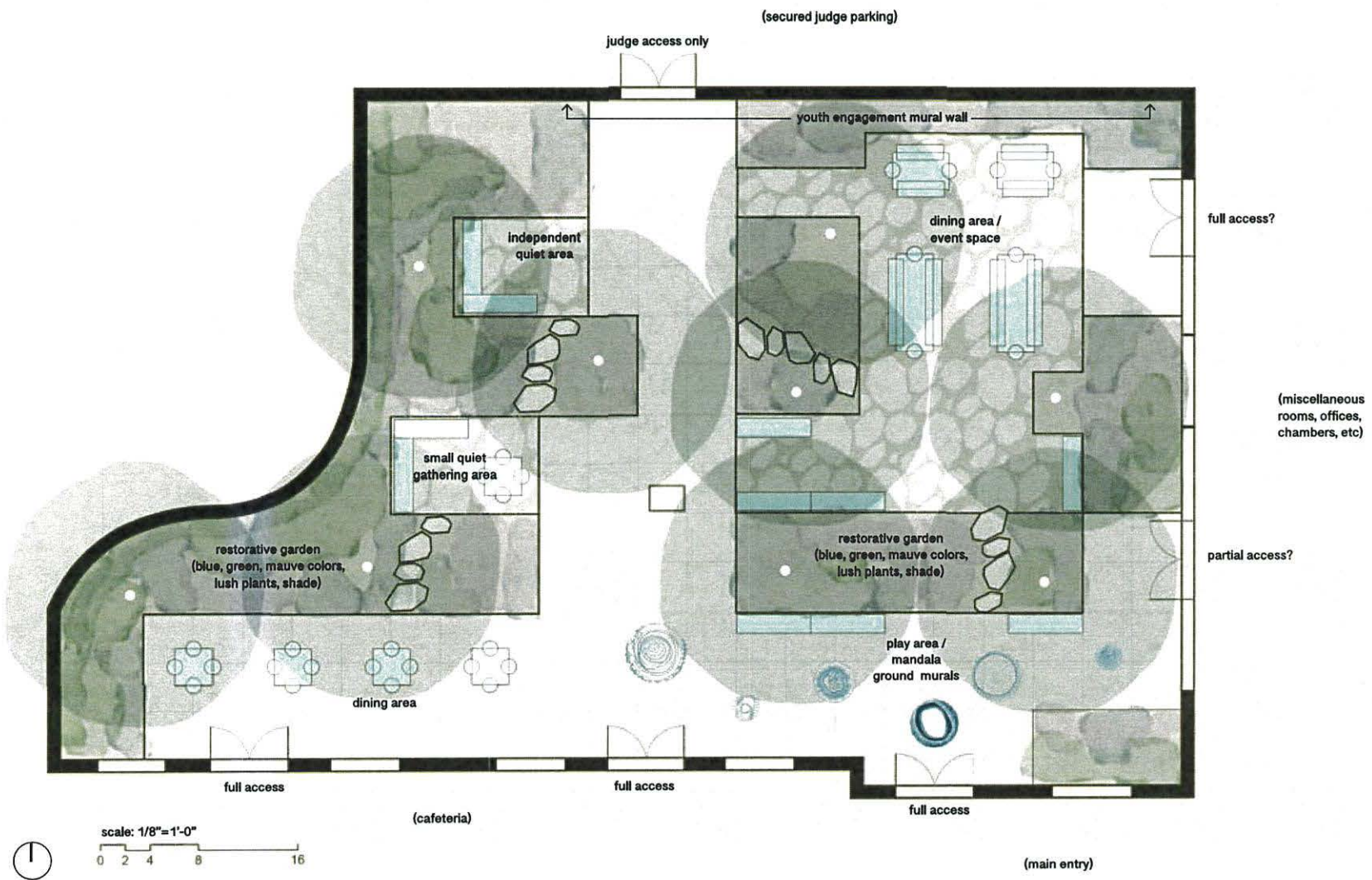


Straub Thurmayr, Folly Forest
Perforations in asphalt, tree plantings, ecological rejuvenation, brings nature to underprivileged neighborhood "health and learning"

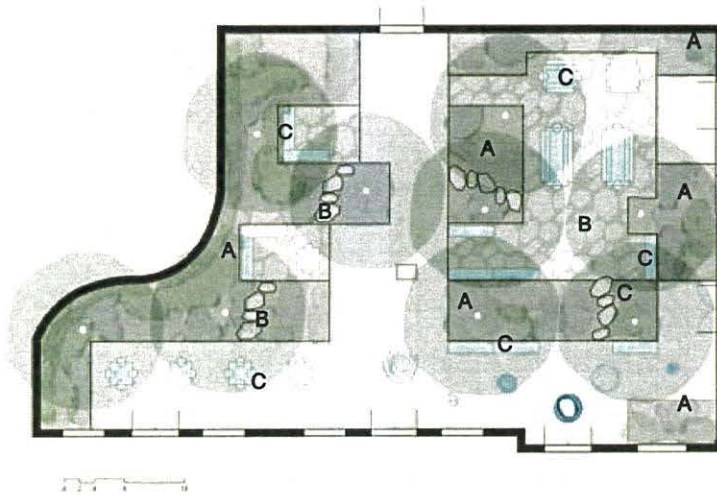
- seating options
- activity space
- variety of sound options
- independent vs. crowded space options
- visibility of surroundings
- play space
- alleviate feeling of unaccounted for space
- allow people to make choices about where they exist in space
- access to nature

Precedent Project Imagery

Courtyard of Second Chances Design Concept



Courtyard of Second Chances Concept 02



A restorative garden — lush plantings with calm color scheme (blues, greens, mauve; inspired by trauma informed design principles). plants have year round sensory qualities (smell, color, edible, flowers, evergreens, etc). shredded red oak mulch is used to improve soil health and retain moisture in soil for plants. existing plants are included in addition to the recommended palette below. soil is amended for plant health and drainage. drought tolerant plants are used.



suggested plant palette



shredded red oak mulch

B pervious gathering area — courtyard concrete is re-used as pervious pavers. red oak mulch is base layer between pavers. concrete is broken up creating pathways and more pervious area for water to drain, improving regional water system and soil health. a variety of seating and dining areas are available in pervious gathering areas (private areas, communal area, shaded areas, sunny areas).



concrete is broken up to create larger planted areas and re-used as pavers



shredded red oak mulch

C seating and dining — benches and tables are made from re-used stacked concrete. table tops are made from a sustainable hardwood, such as sassafras. the wood and concrete evoke a soft warm natural character, avoiding sterile materials such as metals.

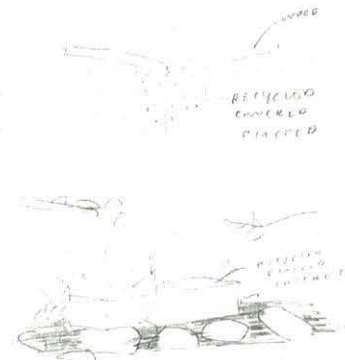
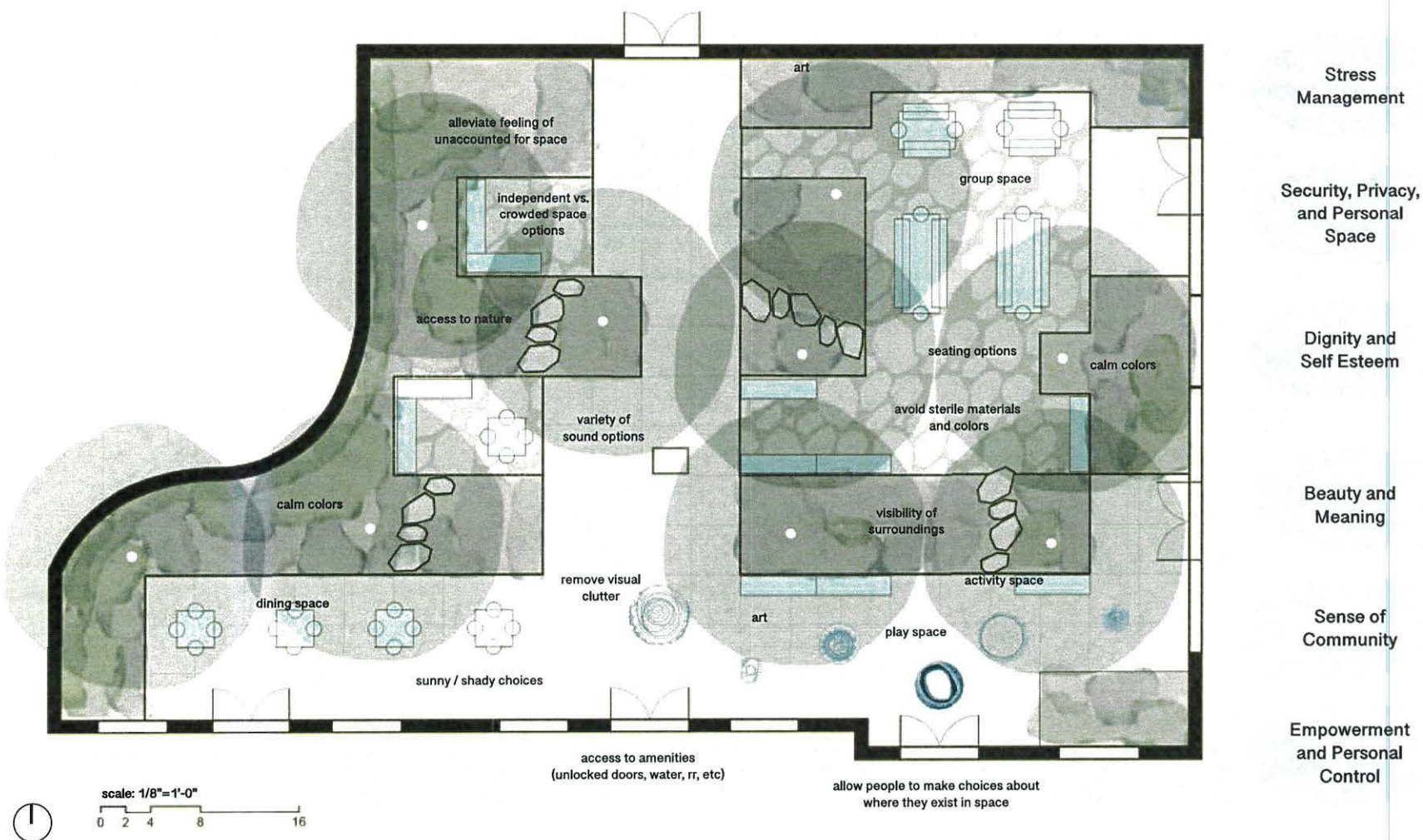


table top (sassafras)



re-used stacked concrete bench and table base

Design Palette



Courtyard of Second Chances Concept 02: Trauma Informed Design Overlay