

Fulton County COVID-19 Response Update

November 17, 2021
BOC Meeting

OVERVIEW

Incident Response Update

- Statistics
- Vaccination Response
- Pediatric Vaccination Implementation

Reopening Update

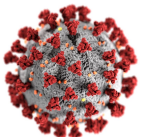
- Vax or Test Initiative
- Mask Requirement and Service Modifications

ARPA Use Case Update

- Court Backlog Project
- ERAP Phase II Update

2021 COVID Funding Update

- Update - COVID 19 Reserve & ARPA Spend

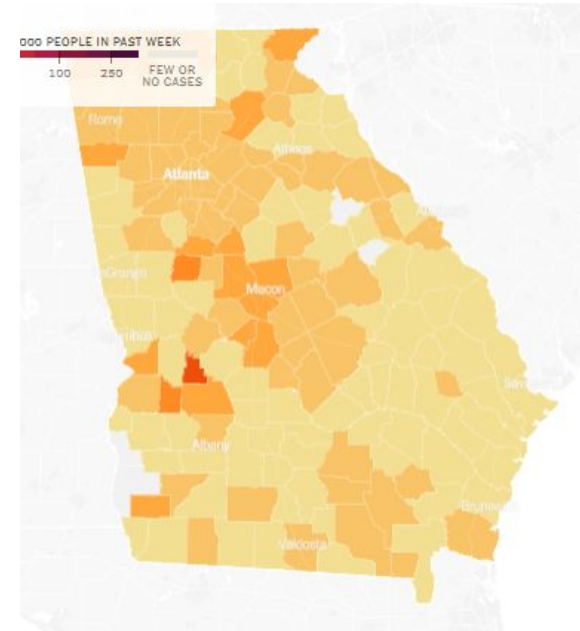
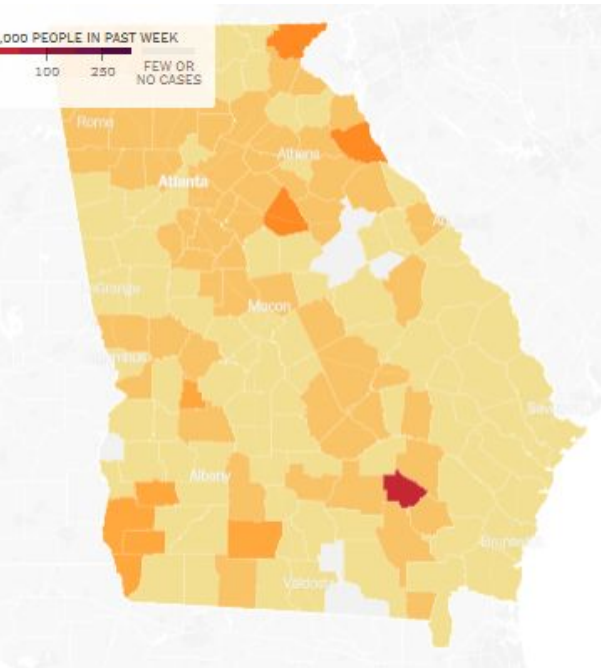


INCIDENT RESPONSE REVIEW

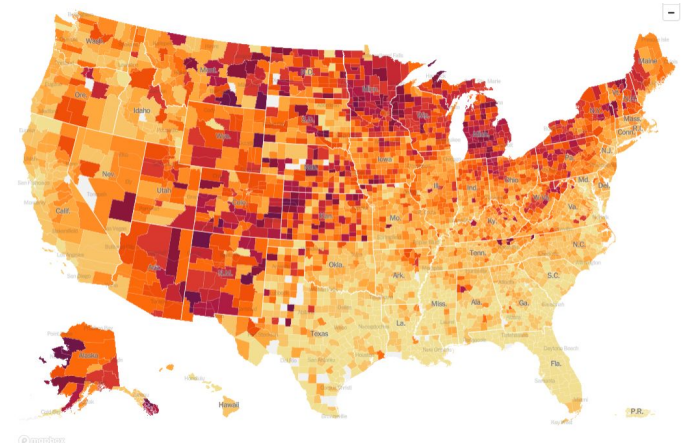
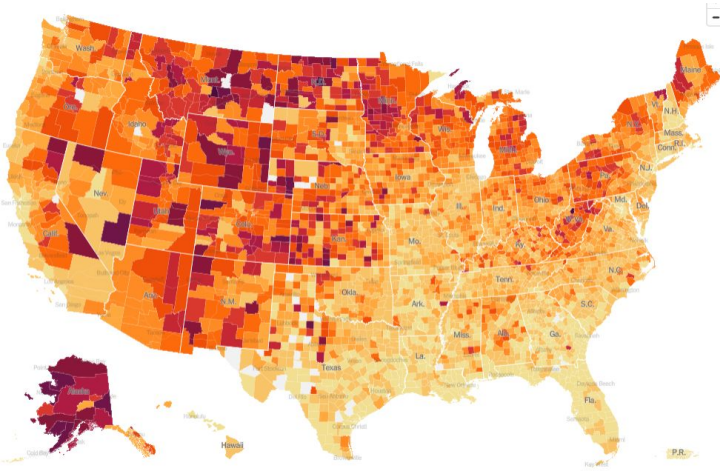
- The 7-day average for cases, hospitalizations, & % positives are all now exhibiting signs of plateaus.
- The 7 day trend for deaths due to COVID-19 has dropped 300% since the last BoC meeting.
- Current modeling has the Fulton County COVID forecasted metrics to be close to our current levels through February 2022.
- Fulton County hospitals are still experiencing dangerous hospital room shortages, due to high volumes of non COVID-19 admissions.
- Three of the major indicators on the Fulton County COVID scorecard are now green and one is yellow, (cases).

Incident Response Update (Heat Maps)

November 3rd vs November 15th



Hot spots



Incident Response Update

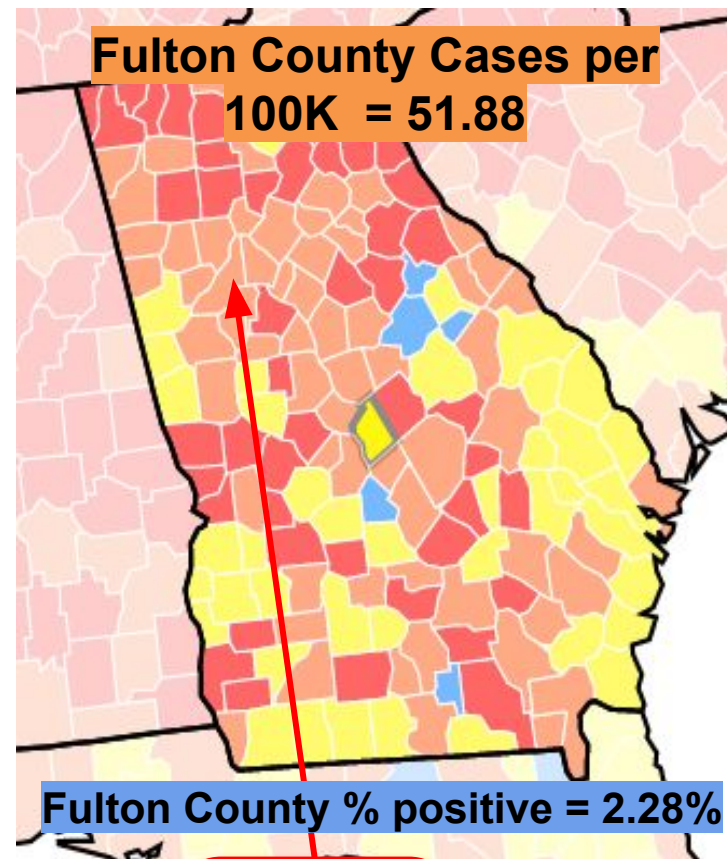
Risk Level

How CDC measures the county level of community transmission...

- CDC looks at two numbers to determine the level of community transmission
 - Total cases
 - Percent Positive

Def of total new cases - A county's rate of new COVID-19 infections reported over the past 7 day period of time per 100,000 residents.

Def of percent positivity - Percentage of positive COVID-19 tests in a county over the past 7 day period of time.



Community Transmission Levels

Total new cases per 100,000 persons in the past 7 days

Percentage of NAATs that are positive during the past 7 days

Low Transmission	Moderate Transmission	Substantial Transmission	High Transmission
0-9.99	10-49.99	50-99.99	≥100
0-4.99%	5-7.99%	8-9.99%	≥10.0%

Incident Response Update



COVID-19 CASE COUNTS AND RATES BY CITY

	Recent 14-day reporting period ¹	Preceding 14-day reporting period	% Change from preceding 14 days (%) ²	14-Day Incidence Rate ³
	<i>10/21-11/3</i>	<i>10/7-10/20</i>		
Alpharetta	45	46	↓ 2.2%	68.4
Atlanta	421	537	↓ 21.6%	91.8
Chattahoochee Hills	<10	<10	-	33.9
College Park	12	16	↓ 25.0%	93.0
East Point	25	44	↓ 43.2%	65.2
Fairburn	13	20	↓ 35.0%	78.9
Hapeville	<10	15	↓ 60.0%	91.6
Johns Creek	60	64	↓ 6.3%	72.8
Milton	25	39	↓ 35.9%	60.5
Mountain Park	0	0	-	0.0
Palmetto	<10	<10	↓ 75.0%	25.4
Roswell	73	74	↓ 1.4%	78.6
Sandy Springs	64	80	↓ 20.0%	59.2
South Fulton	95	126	↓ 24.6%	88.4
Union City	22	27	↓ 18.5%	82.0
Unknown	37	37	-	-

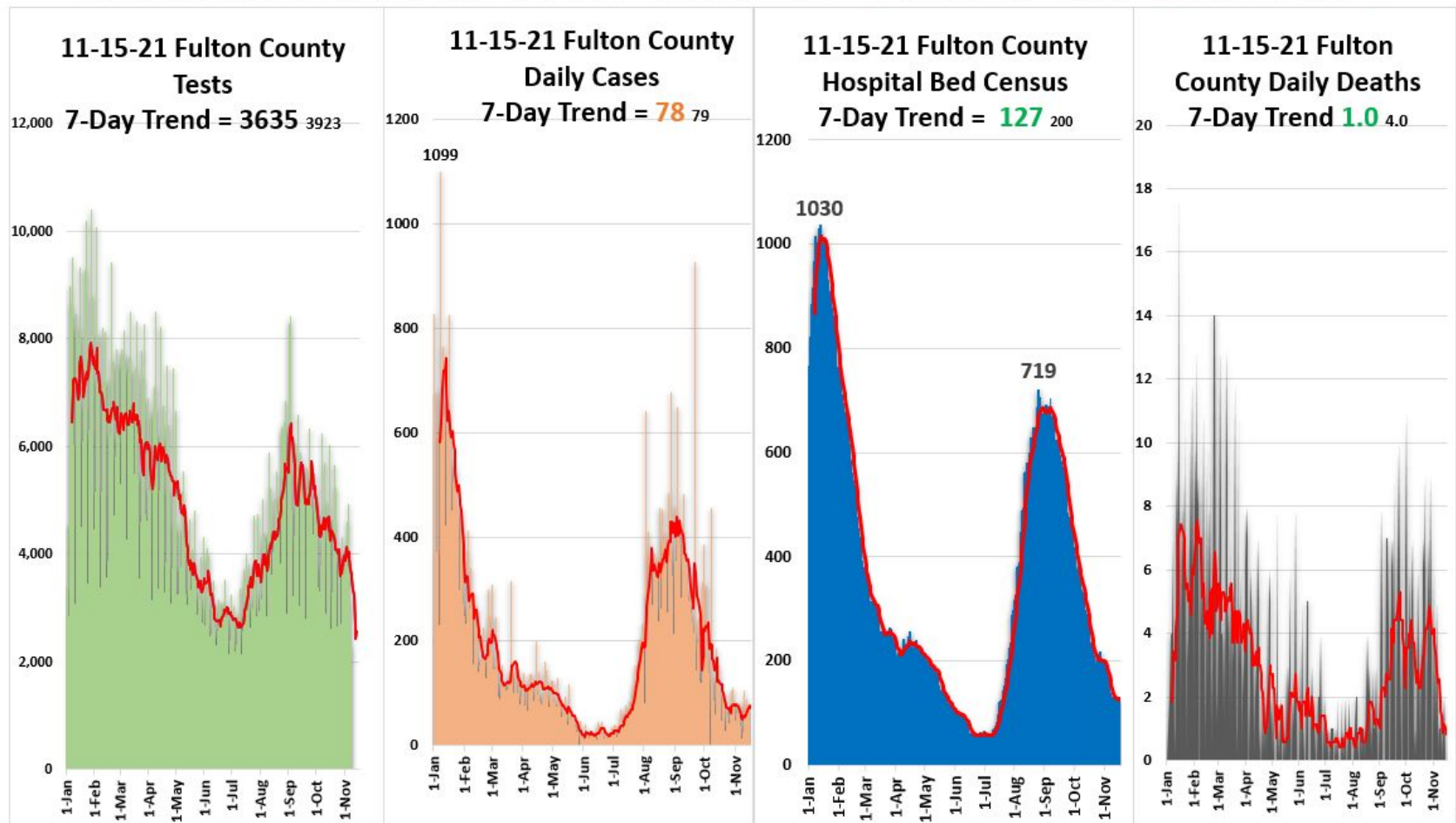
Incident Response Update



- **Fulton County COVID-19**

- 7-day average for cases is **78**, static since the last BoC mtg.
- 7-day average for % positive is **2.9%**, static since the last BoC mtg.
- 7-day average, Hospitalizations is **127**, down 36% since the last BoC mtg.
- 7 day average, for deaths is **1.0**, down 300% since the last BoC mtg.

Fulton County Dashboard 11-15-2021: New Tests = 2560 / New Cases = **73** / New COVID Census = **125** / New Deaths = **0**



Incident Response Update



11/15/21 Fulton County COVID-19 Scorecard

Metric	Status (7-day average) =*	Metric
Testing (Demand & Capacity)	*3,635 ⬇️	Current capability is 8,000 / day Daily Testing: over 2857 , 1428 - 2857 , less than 1428
Testing (Results)	24-48 hrs ⬆️	Time to receive results: 0 - 48 , 49 - 96 , over 96
Cases	*77 ₇₈ ⬆️	Less than 20 , 20 - 74 a day , 75 to 249 , over 250
Fulton positivity rate % +	*2.9% _{3.0%} ⬆️	Less than 1% , 1% - 5% , 5% - 10% , over 10%
Hospitalizations COVID census	*127 ₂₀₀ ⬇️	Less than 50 , 50 - 200 , 201 - 349 , over 350
Hospital Bed Availability	*13.0% ⬆️ *12.2% Adult	Open Beds: over 20% , 15% - 20% , Less 15%
Hospital CCU Bed Availability	*16.6% ⬆️ *16.1% Adult	Open CCU Beds: over 20% , 15% - 20% , less 15%
Hospital Vent Availability	*59.3% ⬆️	Open Vents: over 25% , 15% - 25% , less 15%
COVID Deaths	*1.0 _{4.0} ⬇️	Less than .25 , .25 - 2.5 , 2.5 - 5 , over 5
Morgue census	*87 ⬆️	Less Than 75 , 75 - 90 , over 90
COVID Vaccine Administered Booster	530,026% 4,232 boosters ⬇️	More than 75% , 50% - 75% , less than 50%

VACCINATION RESPONSE

- | | |
|--|--|
| <ul style="list-style-type: none">■ 530,000 vaccines administered at Fulton County fixed and mobile sites.■ Over 40,000 doses of vaccines have been administered via the Fulton County mobile vaccination units | <ul style="list-style-type: none">■ 4 mobile units will be at 15 locations this week.■ Vaccinations and approved boosters continue to be available at:<ul style="list-style-type: none">■ Board of Health Clinics,■ 141 Pryor St,■ 4700 North Point Parkway,■ 5710 Stonewall Tell Rd,■ 3900 Aviation Cir NW |
|--|--|
-
- *****INCENTIVES*****
 - \$100 for any 1st or 2nd vaccine dose.
 - 11/16 through 12/4
 - Fulton County Residents ONLY
 - Vaccine events scheduled with APS on Saturday are fully booked.
 - Carver High School
 - Douglass High School

Vaccination Response

GEORGIA

[Download Published Data](#)

VACCINES ADMINISTERED

ADMINISTERED

11,767,433

ADMINISTERED PER 100K

113,106

RESIDENTS VACCINATED

At Least One Dose

5,938,007

% At Least One Dose

57%

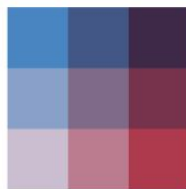
Fully Vaccinated

5,253,158

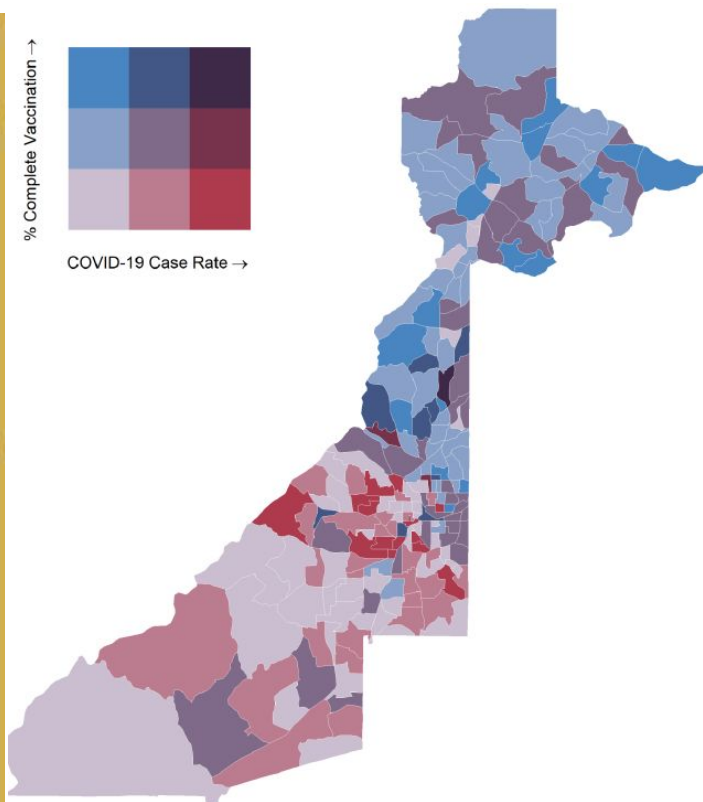
% Fully Vaccinated

50%

% Complete Vaccination →



COVID-19 Case Rate →



- Totals are extracted from the DPH GRITS System
- Totals represent % of total population
- The Fulton County totals for those eligible for vaccination is: 69% one dose & 62% fully vaccinated

Fulton County

[Download Published Data](#)

VACCINES ADMINISTERED

ADMINISTERED

1,280,876

ADMINISTERED PER 100K

123,612

RESIDENTS VACCINATED

At Least One Dose

628,242

% At Least One Dose

61%

Fully Vaccinated

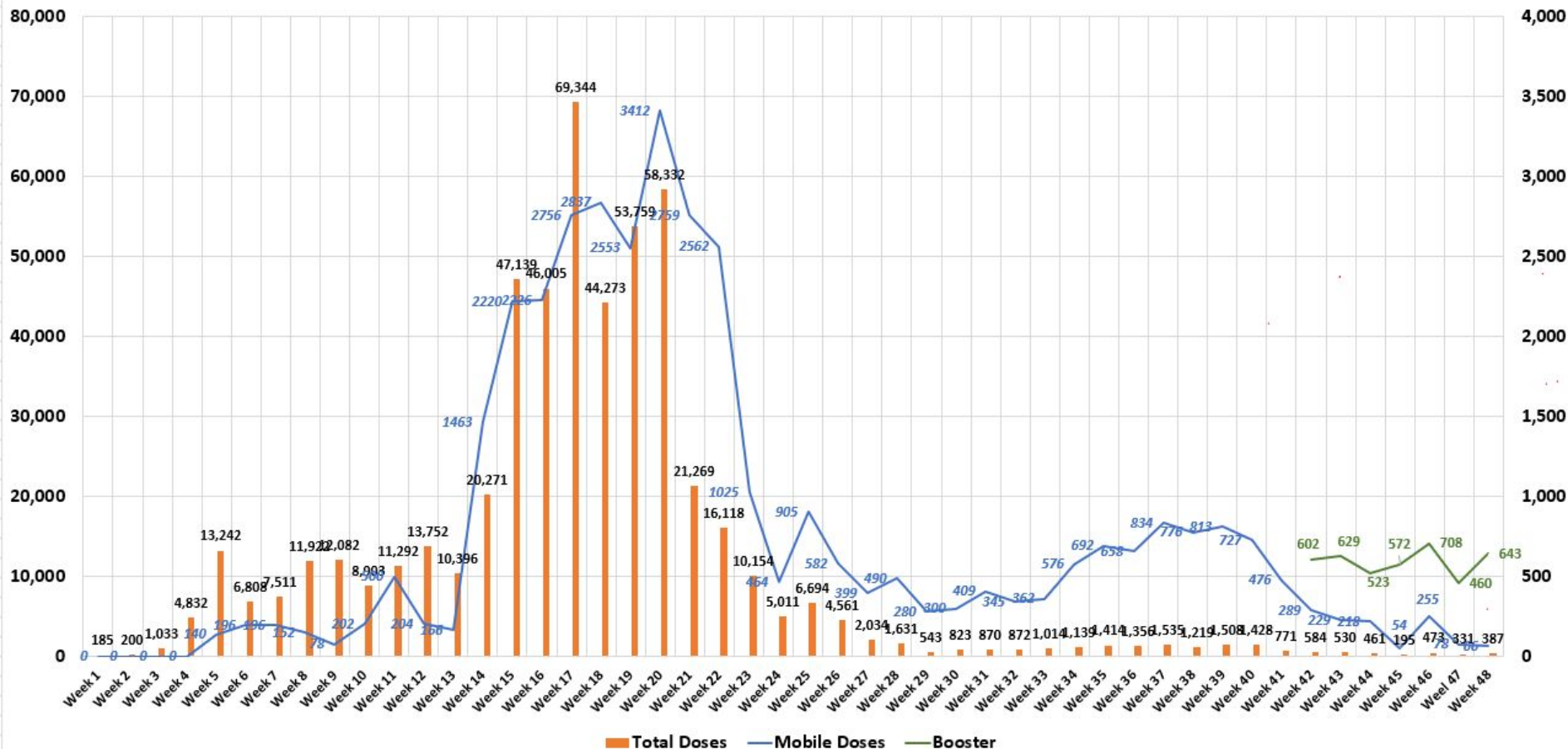
566,245

% Fully Vaccinated

55%

Vaccination Response

Through 11-15-21 Fulton County Vaccine 1st & 2nd dose Weekly Total & Weekly Mobile Total (5 % ratio)



***159 Pfizer 1st doses were delivered
this week to 5-11 year-olds at our fixed locations**

Mobile Vaccine Response Update



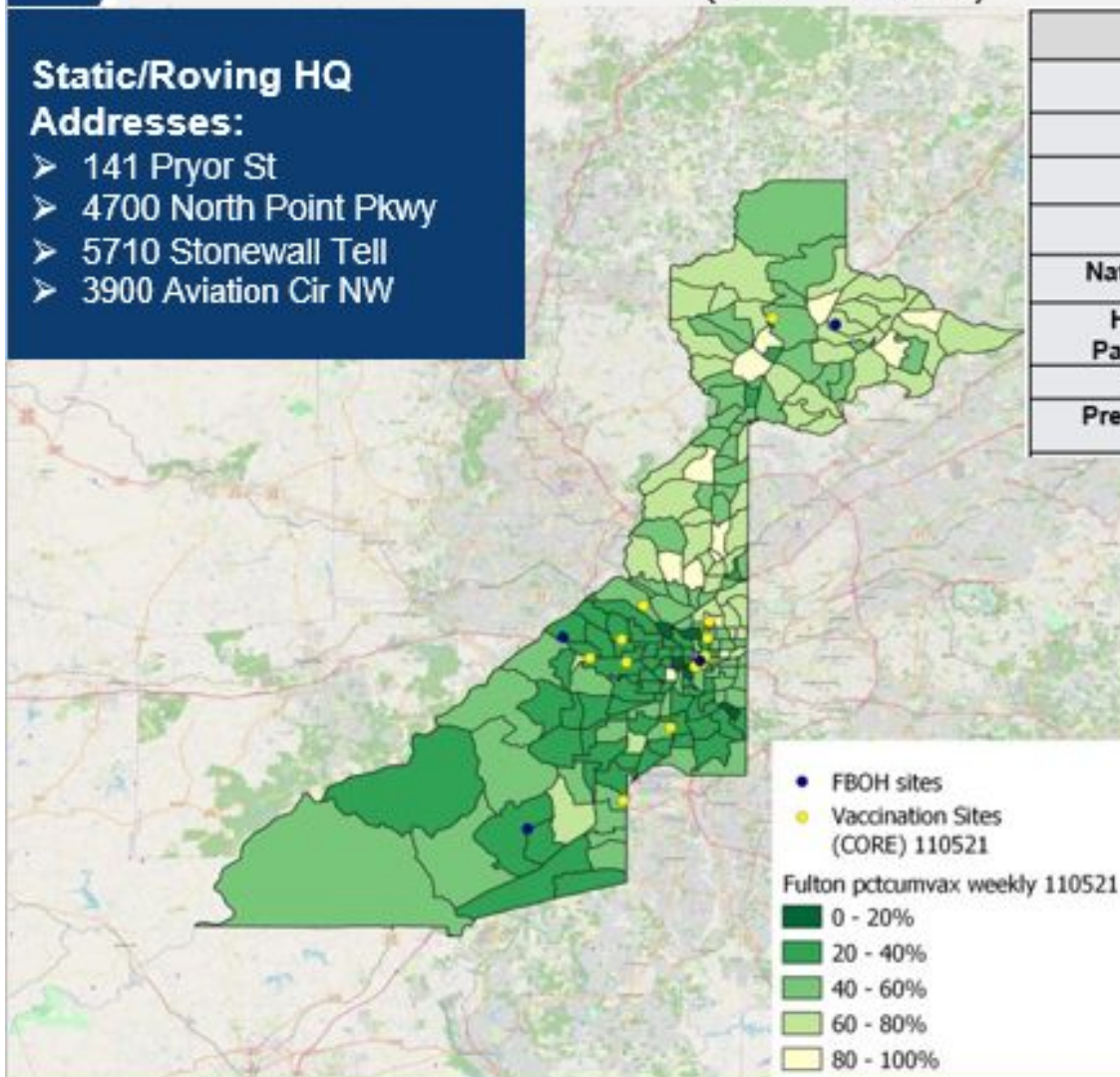
4

Fulton County Map of Mobile Vaccination Sites (6/1 - 11/14)

Static/Roving HQ

Addresses:

- 141 Pryor St
- 4700 North Point Pkwy
- 5710 Stonewall Tell
- 3900 Aviation Cir NW



Race		
	Number	Percentage
Black	7625	65.34%
White	2015	17.26%
Asian	259	2.22%
Native American	45	.04%
Hawaiian or Pacific Islander	20	.08%
Hispanic	1685	14.44%
Prefer Not to Say	280	2.39%

Number of vaccines administered = 11,669

Number of events supported = 15

Number of unique sites visited = 11

Vaccination Response

Vaccination Deployment Posture

- 4 Fixed locations (combined capacity up-to 900 Vax per day, as demand dictates):
 - 141 Pryor St.
 - 4700 North Point Pkwy.
 - 5710 Stonewall Tell Rd.
 - 3900 Aviation Cir
- 4 Mobile Units (combined capacity 300 Vax per day) = up to, 20 events per week
- \$100 dollar incentives for 1st & 2nd doses, to be offered at all fixed sites, from November 16 thru December 4th
- Extended hours offered

Path Forward

- Continue administration of 5-12 year-old
- Look to expand incentive opportunities at both fixed locations and mobile units
- Micro target our vaccination efforts in census tracts with low vaccination rates
- Continue to look for creative ways to battle vaccine hesitancy with targeted advertising



Vaccination Response

Extended hours offered for the next 2 weeks at select locations

To make vaccines more convenient to Fulton County residents, vaccination sites will begin offering evening hours.

In addition to regular hours, (Tuesday through Saturday 9:30 am - 3:30 pm) each location will host at least one 5 hour shift (from 3:30 pm - 8:30 pm)

- 11/16 at 4700 Northpoint Parkway
- 11/17 at Aviation Community Cultural Center - 3900 Aviation Cir NW
- 11/18 at South Fulton Service Center - 5710 Stonewall Tell Rd
- 11/23 at 4700 Northpoint Parkway
- 11/24 at Aviation Community Cultural Center - 3900 Aviation Cir NW

Mobile Vaccination: Sites this week

7

Upcoming Sites/Events (11/15 - 11/21)

Nov 15	Nov 16	Nov 17	Nov 18	Nov 19	Nov 20	Nov 21
	Material in Motion		South Fulton Service Center	Bethany Baptist Church		
	NSPOC	City of Atlanta (DPW - SWS Chester)	Brink's Atlanta - Midtown	Diaz Foods	Frederick Douglass High School	
	Zion Hill Baptist Church	Aviation Community Cultural Center	BLM 5K Atlanta Festival	BLM 5K Atlanta Festival	Carver Early College High	
	Blanket Atlanta with Love	Mount Moriah Baptist Church	Allen Temple AME Church/ Atlanta Falcons Football Game	Chris 180 Event		



TARGETED OUTREACH: CLOSING THE VACCINE EQUITY GAP



RACE

43.9% of Black residents have received at least 1 dose, compared to 59.9% of White residents

GEOGRAPHY

6 Census tracts within Fulton County have <20% residents with at least 1 dose.

AGE

59.4% of 20 - 24% year olds have received at least 1 dose, compared to 74.9% of 45 – 54 year olds

OUR APPROACH

ACCESS

- Community-based locations

INCENTIVES

- Gift Cards

EDUCATION

- Alive & In Color Campaign Site
- School-based

TRUSTED VOICES

Municipalities | Elected Officials | School Systems
Nonprofits | Media
Small Businesses | Community Orgs
Faith Partners
Youth Organizations



Questions?



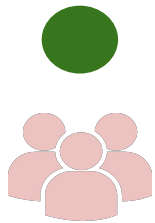


Fulton County Government Reopening Plan

Gating Criteria

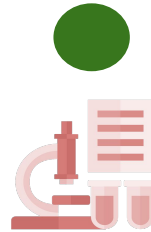
Reopening Indicators

CASES



Downward trajectory in the 7-day average of new positive tests within a 14-day period, and positivity rate below 5%

VAX OR TEST

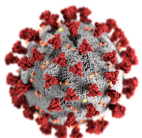


Ability to vaccinate employees to 80% goal and to test employees who choose alternative with results within 48-72 hours

EQUIPMENT



PPE and supplies for all employees interacting with public.



**Satisfy Before Proceeding to Phased Comeback*

REOPENING MEASURES

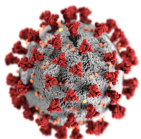
Adjustments for Progress

FACILITIES

- Suspend mask requirement
- Install signage communicating “Masks Recommended”
- Install signage communicating “Social distancing Encouraged”
- Maintain hand sanitizer stations

SERVICES

- Open swim and senior centers - December
- Allow congregate dining (still with boxed lunches rather than buffets) - January
- Reopen meeting rooms at libraries - December 1
- Resume in person storytime - December 1
- Resume 2+ in study rooms



COVID POSITIVE EMPLOYEES

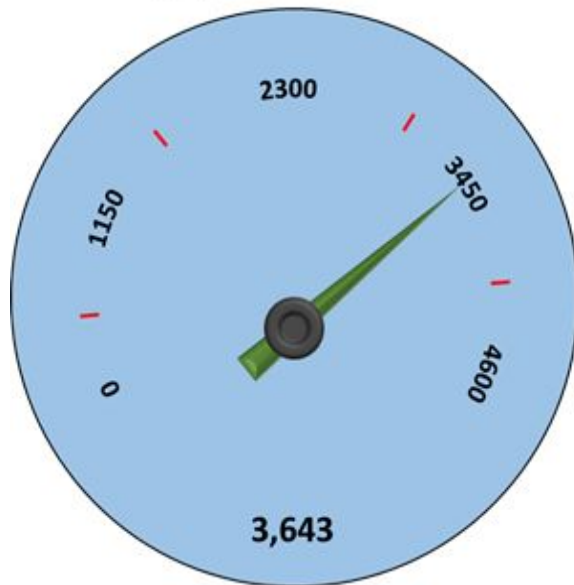
LAST 2 WEEKS	
DEPARTMENT	POSITIVE
SUPERIOR COURT-GENERAL	1
GRAND TOTAL	1

COVID POSITIVE EMPLOYEES

CUMULATIVE			
DEPARTMENT	POSITIVE	DEPARTMENT	POSITIVE
ARTS/COOPERATIVE EXT.	1	MAGISTRATE COURT	3
BHDD	4	MEDICAL EXAMINER	4
BOARD OF HEALTH	28	POLICE	11
BOARD OF COMMISSIONERS	2	PROBATE COURT	6
COUNTY ATTORNEY	3	PUBLIC DEFENDER OFFICE	5
COUNTY MANAGER	5	PUBLIC WORKS	44
COUNTY MARSHAL	13	PURCHASING	3
COMMUNITY DEVELOPMENT	3	REGISTRATION & ELECTIONS	6
DISTRICT ATTORNEY	17	SENIOR SERVICES	9
DREAM	26	SHERIFF	5
EMERGENCY MANAGEMENT	2	SOLICITOR GENERAL	5
EMERGENCY SERVICES	42	STATE COURT-ALL JUDGES	3
EXTERNAL AFFAIRS	2	STATE COURT-GENERAL	7
FINANCE	9	SUPERIOR COURT-ALLJUDGES	4
HUMAN RESOURCES	2	SUPERIOR COURT-CLERK	53
INFORMATION TECHNOLOGY	5	SUPERIOR COURT-GENERAL	31
JUVENILE COURT	22	TAX ASSESSOR	29
LIBRARY	30	TAX COMMISSIONER	38
GRAND TOTAL	482		

Employee Compliance with Vaccination & Testing Policy

Applications



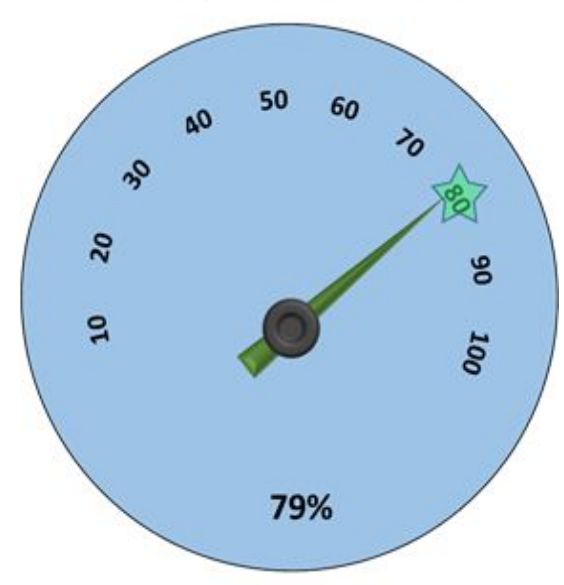
November 1 – 3,469
October 18th – 3,375
October 4th – 3,208
September 13th – 2,966
August 30th – 2,866
August 18th – 2,788
August 2nd – 2,709
July 12th – 2,560

Approved



3,236
3,045
2,979
2,772
2,624
2,526
2,484
2,353

Vaccination %



75%
72%
70%
62%
59%
56%
55%
52%

Return to Office Plan

Employee Vaccination Incentive Program

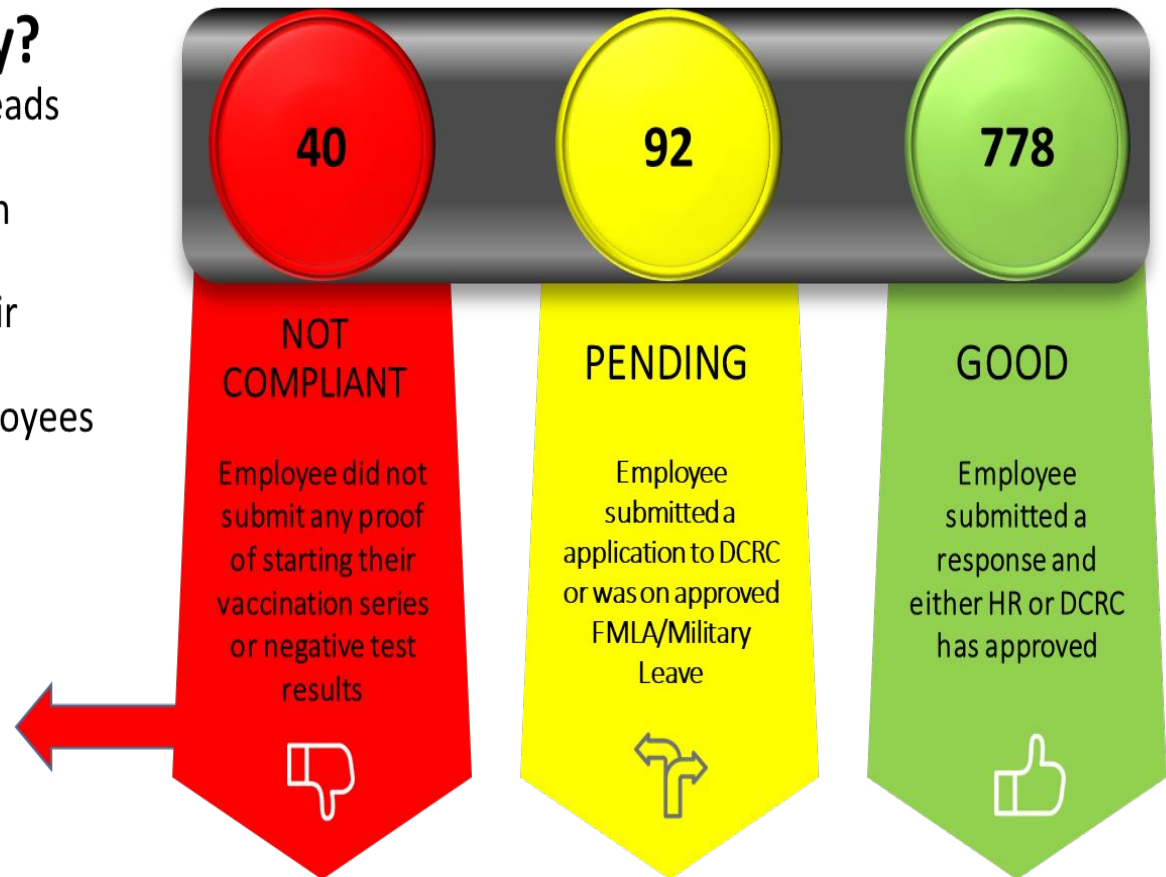
How have we educated the workforce about the policy?

- Distributed policy to Department Heads
- Educated via FulcoNews
- Educational session led by Dr. Paxton
- Created information portal
- Held meeting with managers on their responsibility.
- Emails weekly to unvaccinated employees with policy & link

Suspension Status	# of Employees
1 Day	1
5 Day	19
10 Day	11
Dismissal	8*

* Still working with employees and Department Heads to ensure accuracy

910 Unvaccinated Employees



Report from November 7, 2021 to November 13, 2021



Fulton County Government

Emergency Rental & Mortgage Assistance Updates

Emergency Rental Assistance

Phase II

PROGRAM UPDATES

- **REALLOCATION - TREASURY**

- Guidance updated 10/27, and Deputy Secretary correspondence indicated, “Treasury will begin identifying excess funds for reallocation in mid-November.”

- **REALLOCATION - STATE OF GEORGIA**

- Meeting held with the State DCA to discuss “Voluntary Reallocation”
- DCA committed to review our request and become familiar with the voluntary reallocation guidelines

Emergency Rental Assistance

Phase II

PHASE II - QUICK STATS

20,477 Applications initiated

10,982 Applications submitted

8,913 Applications adjudicated

Assistance
Disbursed
During
Phase II
\$19.4M

Assistance
Disbursed
Phase I &
Phase II
\$35.6M

Assistance
Remaining
to be
Disbursed
\$3.04M

**PROJECTED
DATE FUNDS
WILL DEplete**

12/3/21

Mortgage Assistance

Georgia Administered - \$354M Statewide

MORTGAGE ASSISTANCE UPDATES

- Georgia spend proposal not yet approved.
- Offered assistance to DCA to encourage Treasury to expedite.



QUESTIONS



Fulton County Government

ORCA PROJECT UPDATES

FULTON COUNTY GOVERNMENT

Project ORCA

COVID-19 CASE REDUCTION

BOC Update
Action Plan 2021-2023
November 17, 2021



AGENDA

- ① Project Overview
- ② Hiring
- ③ Case Triage
- ④ Tracking and Reporting
- ⑤ Overall Progress

PROJECT OVERVIEW

Since the beginning of COVID-19, the Fulton County Court System has amassed a significant and unprecedented level of cases. Project ORCA will address this challenge by utilizing a combination of capacity expansion and productivity enhancement initiatives to expedite the case adjudication process.

Case Accumulation Defined

All cases (hearings, filings, applications) that were initiated before and during the pandemic (including those currently awaiting formal charging or filing) that have been impacted due to current limitations at various stages of the case administration process.

HIRING

All Offices and Departments have been allocated positions and are fully engaged in the hiring process

Courts/Offices	Number of Applications/Resumes Received	Number of Interviews Scheduled/Conducted	Number of Pending Offer Letters	Number of Project ORCA Staff Hired	Number of Positions Approved
COSMC	136	55	2	7	13
District Attorney	220	91		66	74
Juvenile	1,102	186	1	14	15
Magistrate Court	116	17		7	8
Marshal	IN PROGRESS				28
Probate Court	424	33		5	7
Public Defender	240	26	2	15	27
Sheriff	IN PROGRESS				50
Solicitor General	452	142		29	31
State Court	323	70	2	18	24
Superior Court	650	223	2	26	38
Human Resources	IN PROGRESS				1
Strategy and Performance	IN PROGRESS			1	2
Total	3,663	843	9	188	318

TRACKING & REPORTING


We will measure progress at multiple levels of the program

- ❑ Pace of Backlog Case reductions
 - ❑ Initial case counts and the number of cases disposed.
- ❑ Case Disposition for each court
 - ❑ Case counts/dispositions by court.
- ❑ Case Count/Disposition for each Judicial Officer
 - ❑ Number of cases disposed by judge.

CASE TRIAGE

Jail / In-Custody

Defendants will be grouped according to charge type and acting party required to expedite review and resolution.




Defendants with Unindicted & Indicted
Non-Complex Charges
(Can Proceed with Project ORCA Action)



Defendants with State Court Charges
(Require Solicitor General/State Court Judge Action)




Defendants with Unindicted Complex Charges
(Require District Attorney Action)




Defendants with Indicted Complex Charges
(Require Superior Court Judge Acti

Non-Complex


Calendars will capture the oldest case with similar charges to expedite review and resolution.



Oldest Cases with Single Defendant
AND Single Charge



Oldest Cases with Single Defendant
AND Two Charges



Oldest Cases with Single Defendant
AND Three or More Charges

OVERALL PROGRESS



The Courts have continued to proceed with process enhancements and made the following accomplishments:

- ✓ 60% of Hiring has been achieved
- ✓ Courtroom Renovations in Phase One are underway and have an estimated completion date of November 29, 2021
- ✓ Space/Resource Management software is being configured
- ✓ 86% of laptops have been distributed and 54% of the mobile devices have ordered
- ✓ Calendars using the alternative Case Triage methods have been set for hearings



QUESTIONS



Emergency Response Reserve & American Rescue Plan Act Funds Update

COVID-19: Recovery Funds Plan

Economic Recovery and
Operational Resiliency Plan

November 12, 2021



Consolidated Covid Response Plan

	10.31.2021	Budget	11.12.2021
	Operational Plan - 100% FEMA Reimb	Plan Changes	Operational Plan 100% FEMA Reimb
<i>In Millions \$</i>			
EERF - General Fund	\$ 14.9	-	\$ 14.9
Communications	2.0	-	2.0
Child Care / Healthcare / Other	1.3	-	1.3
Payment to Employees	6.6	-	6.6
Information Tech - Virtual Support	2.0	-	2.0
2020 Obligation	3.0	-	3.0
American Rescue Act	216.9	-	216.9
Health Infrastructure	17.3	-	17.3
Pandemic Proof County Facilities	28.0	-	28.0
Day Porters / Cleaning	4.1	-	4.1
Child Care / Healthcare / Other	1.5	-	1.5
Premium Pay for Employees	3.4	-	3.4
PPE- County Employees	5.0	-	5.0
Court Backlog Project	75.0	-	75.0
Information Tech - Virtual Support	8.0	-	8.0
Safety Net Services - CSP	8.0	-	8.0
Long Term Revolving Loan Program	5.2	-	5.2
Food Insecurity	6.1	-	6.1
Job Training	2.7	-	2.7
ERAP 2 & High Need	25.0	-	25.0
ERAP -1 and 2 Additional Operational Costs	8.6	-	8.6
Testing Vaccination	17.4	-	17.4
Vaccine Incentive Program	1.7	-	1.7
Consolidated Appropriations Act	18.0	-	18.0
ERAP 1	18.0	-	18.0
FEMA Related Expenses	\$ 32.8	-	\$ 32.8
Projected Annual Uses		-	
Reserve	\$ 31.3	-	\$ 31.3

10.31.2021		11.12.2021	
Expenses			
YTD Expenses		Expense Changes	YTD Expenses
\$	10.5		\$ 10.5
	1.6	-	1.6
	0.5	-	0.5
	6.6	-	6.6
	-	-	-
	1.8	0.0	1.8
	35.3	6.6	41.9
	-	-	-
	0.4	-	0.4
	0.7	0.0	0.7
	0.3	0.0	0.3
	3.4	-	3.4
	1.7	-	1.7
	2.1	0.6	2.7
	0.4	-	0.4
	6.7	0.2	6.9
	-	-	-
	0.1	0.2	0.2
	-	-	-
	13.3	5.5	18.8
	5.8	0.1	6.0
	0.4	-	0.4
	0.0	-	0.0
	17.3	0.0	17.3
	17.3	0.0	17.3
	19.9	0.1	20.0
\$	83.0	6.7	\$ 89.7

Cash Flow Projections – COVID 19 Response

Uses of Funds		2021	2022	2023	2024	Total
A	EERF - General Fund	14.9	-	-	-	14.9
B	American Rescue Act	86.3	76.5	51.5	2.6	216.9
C	Consolidated Appropriations Act	18.0	-	-	-	18.0
D	FEMA Related Expenses	32.8		-	-	32.8
Projected Annual Uses		\$ 152.1	\$ 76.5	\$ 51.5	\$ 2.6	\$ 282.6
Sources of Funds		2021	2022	2023	2024	Total
A	EERF	14.9	16.4			31.3
B	American Rescue Act	128.4	103.4			231.8
C	Consolidated Appropriation Act	18.0				18.0
D	FEMA Reimbursement at 100% over 2 years	6.9	25.9			32.8
Projected Annual Sources		\$ 168.2	\$ 145.7	\$ -	\$ -	\$ 313.9
Cash Balance EOY - 100% FEMA Reimbursement		16.1	85.3	33.9	31.3	31.3
Cash Balance EOY - 50% FEMA Reimbursement		12.7	68.9	17.5	14.9	14.9

Emergency Rental Assistance

ERAP -1

Funded - Consolidated Appropriations Act

Received - Mid/January 2021

<i>in Millions \$</i>	Allocation	Received by FC	YTD Expense
Regular	\$18.0	\$18.0	\$17.3

Expense does not include outstanding POs

ERAP -2

Funded - American Rescue Plan Act

Received - Mid/May and Mid/October 2021

<i>in Millions \$</i>	Allocation	Received by FC	YTD Expense
Regular and High Need	\$24.9	\$24.9	\$18.8

ARPA - Admin. Supplement

County Allocation of ARPA funding for Administration	\$8.6	\$8.6	\$6.0
--	-------	-------	-------

Total	\$51.5	\$51.5	\$42.0
--------------	---------------	---------------	---------------





QUESTIONS