

Fulton County COVID-19 Response Update

December 15, 2021
BOC Meeting

OVERVIEW

Incident Response Update

- Vaccination Response
- COVID 19 Variant - Omicron

Reopening Update

- Vax or Test Initiative

ERAP Phase II Update

Court Backlog Update

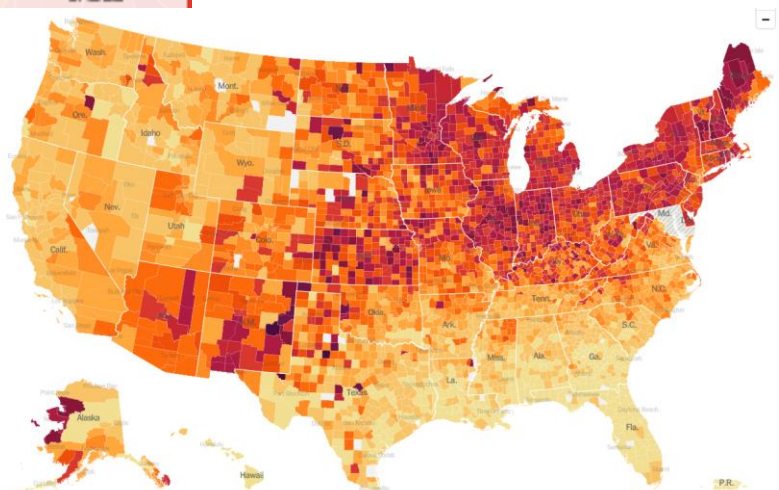
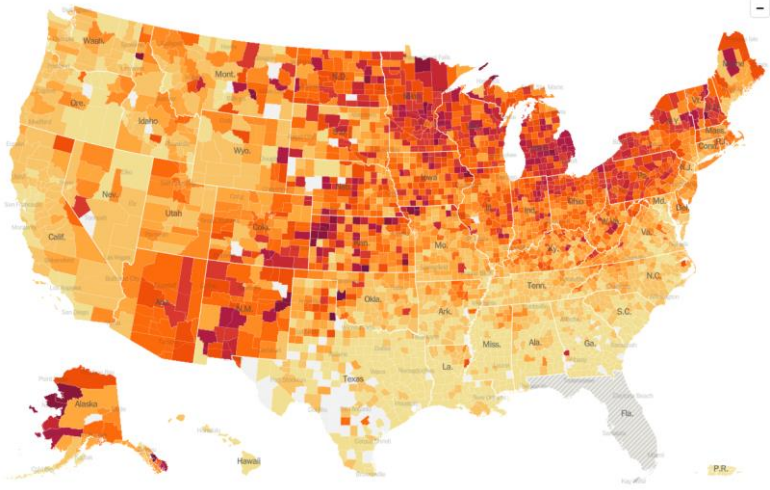
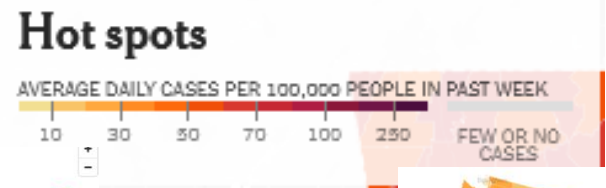
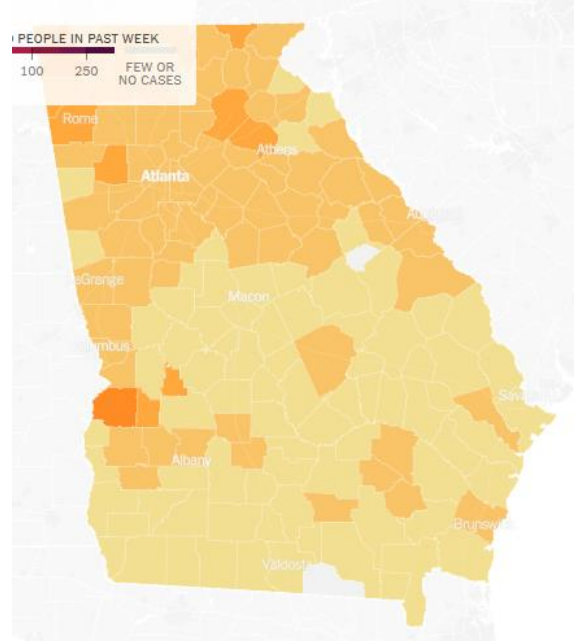
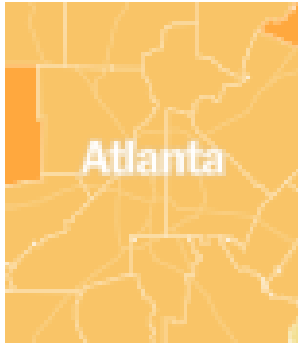
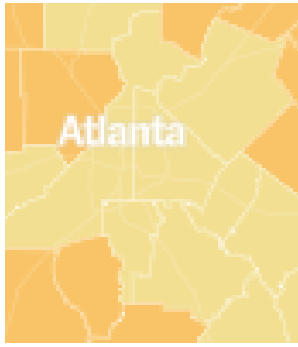
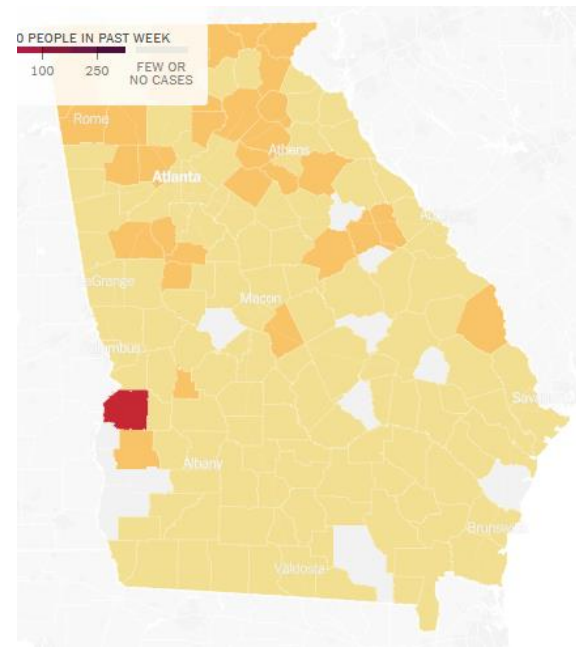
2021 COVID Funding Update

- Update - COVID 19 Reserve & ARPA Spend

INCIDENT RESPONSE REVIEW

- The 7-day average for cases, hospitalizations, % positives & deaths continue to display gains since the last BoC.
- The recent gains may be attributed to the Thanksgiving Holiday
- Current modeling still has the Fulton County COVID forecasted metrics to be close to our current levels through February 2022.
- Fulton County hospitals have seen high numbers of Non-COVID procedures resume this week
- Two of the major indicators on the Fulton County COVID scorecard are green (% positives, deaths) and two are yellow, (cases, hospitalizations).

Incident Response Update (Heat Maps) December 1st vs December 13th



Incident Response Update

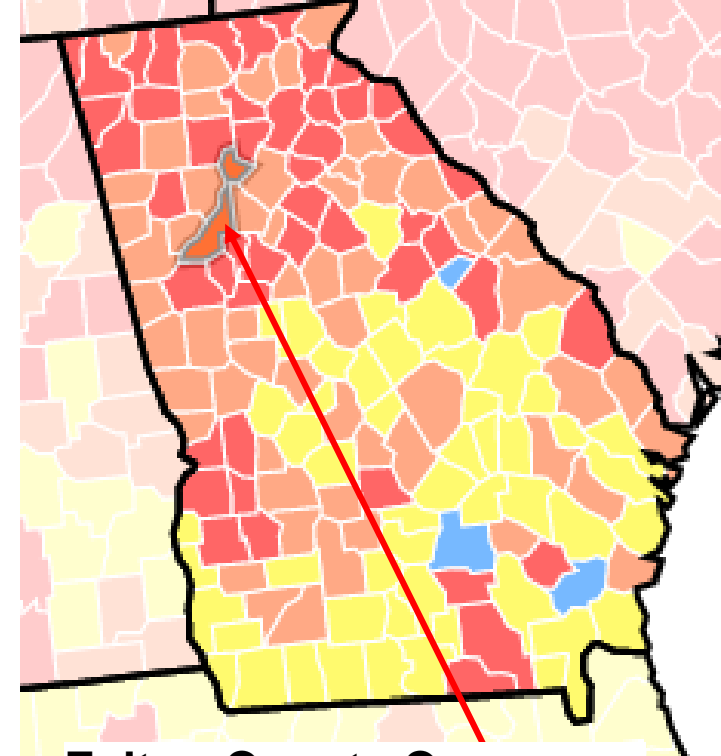
Risk Level

How CDC measures the county level of community transmission...

- CDC looks at two numbers to determine the level of community transmission
 - Total cases
 - Percent Positive

Def of total new cases - A county's rate of new COVID-19 infections reported over the past 7 day period of time per 100,000 residents.

Def of percent positivity - Percentage of positive COVID-19 tests in a county over the past 7 day period of time.



Fulton County Cases per 100K = 105.46
% positive = 3.24 %

Community Transmission Levels

	Low Transmission	Moderate Transmission	Substantial Transmission	High Transmission
Total new cases per 100,000 persons in the past 7 days	0-9.99	10-49.99	50-99.99	≥100
Percentage of NAATs that are positive during the past 7 days	0-4.99%	5-7.99%	8-9.99%	≥10.0%

Incident Response Update



COVID-19 CASE COUNTS AND RATES BY CITY

	Recent 14-day reporting period ¹	Preceding 14-day reporting period	% Change from preceding 14 days (%) ²	14-Day Incidence Rate ³
	<i>11/18-12/1</i>	<i>11/4-11/17</i>		
Alpharetta	97	77	↑ 26.0%	147.4
Atlanta	492	363	↑ 35.5%	107.3
Chattahoochee Hills	<10	<10	-	135.6
College Park	14	<10	↑ 250.0%	108.5
East Point	32	20	↑ 60.0%	83.4
Fairburn	22	<10	↑ 214.3%	133.5
Hapeville	<10	<10	-	45.8
Johns Creek	108	78	↑ 38.5%	131.0
Milton	50	44	↑ 13.6%	121.1
Mountain Park	0	0	-	0.0
Palmetto	<10	<10	-	127.2
Roswell	94	92	↑ 2.2%	101.3
Sandy Springs	99	79	↑ 25.3%	91.6
South Fulton	107	58	↑ 84.5%	99.6
Union City	26	12	↑ 116.7%	96.9
Unknown	27	32	-	-

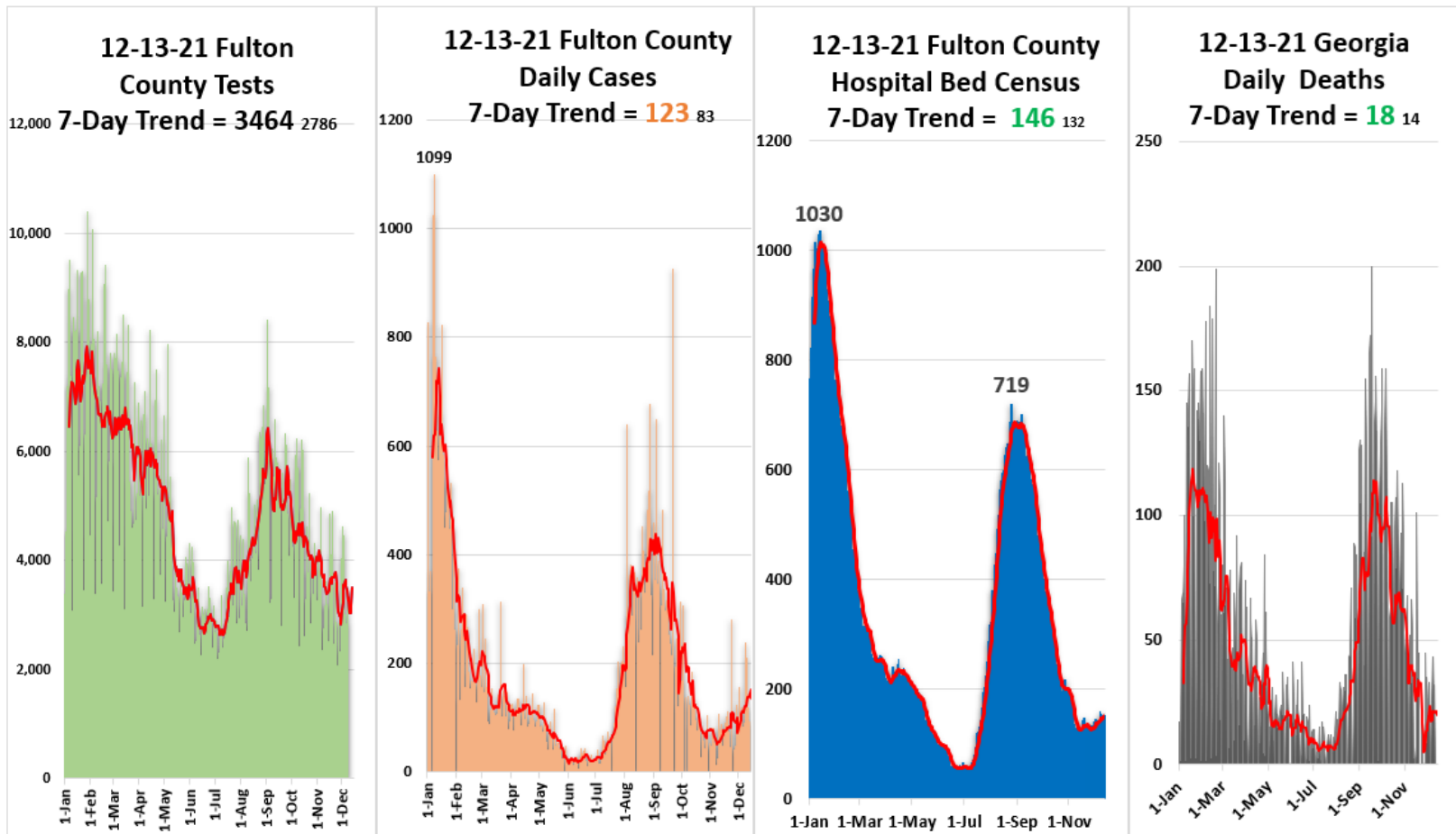
Incident Response Update



- **Fulton County COVID-19**

- 7-day average for cases is **123**, up 31% since the last BoC mtg.
- 7-day average for % positive is **4.5%**, up 33% since the last BoC mtg.
- 7-day average, Hospitalizations is **146**, up 20% since the last BoC mtg.
- 7 day average, for deaths is **2.0**, up 430% since the last BoC mtg.

Fulton County Dashboard 12-13-2021: New Tests = 3518 / New Cases = 136 / New COVID Census = **152** / New Deaths = 0



Incident Response Update



12/13/21 Fulton County COVID-19 Scorecard

Metric	Status (7-day average) =*	Metric
Testing (Demand & Capacity)	* 3,464 ↑	Current capability is 8,000 / day Daily Testing: over 2857 , 1428 -2857 , less than 1428
Testing (Results)	24-48 hrs →	Time to receive results: 0 - 48 , 49 - 96 , over 96
Cases	* 145 ₁₀₂ ↑	Less than 20 , 20 – 74 a day , 75 to 249 , over 250
Fulton positivity rate % +	* 4.5% _{3.5%} ↑	Less than 1% , 1% - 5% , 5% - 10% , over 10%
Hospitalizations COVID census	* 152 ₁₃₂ ↑	Less than 50 , 50 – 200 , 201 - 349 , over 350
Hospital Bed Availability	* 16.4% → * 15.3% Adult	Open Beds: over 20% , 15% - 20% , Less 15%
Hospital CCU Bed Availability	* 20.0% → * 19.0% Adult	Open CCU Beds: over 20% , 15% - 20% , less 15%
Hospital Vent Availability	* 58.4% →	Open Vents: over 25% , 15% - 25% , less 15%
COVID Deaths	* 2.0 _{0.3} ↑	Less than .25 , .25 – 2.5 , 2.5 – 5 , over 5
Morgue census	* 102 ₉₃ ↑	Less Than 75 , 75 – 90 , over 90
COVID Vaccine Administered Booster	532,196 94% 8,425 boosters ↓	More than 75% , 50% - 75% , less than 50%

VACCINATION RESPONSE

- **532,195** vaccines administered at Fulton County fixed and mobile sites.
- **Over 40,500** doses of vaccines have been administered via the Fulton County mobile vaccination units
- *****INCENTIVES*****
 - To date Fulton County has incentivised over 2700 individuals with \$100
 - Fulton County Residents ONLY
- 4 mobile units will be at 21 locations this week.
- Vaccinations and boosters continue to be available at:
 - Board of Health Clinics,
 - 141 Pryor St,
 - 4700 North Point Parkway,
 - 5710 Stonewall Tell Rd,
 - 3900 Aviation Cir NW
- Boosters now **recommended** for all over 16
- Early data on the effectiveness of boosters on the Omicron variant shows increased protection

Vaccination Response

GA DPH Vaccine Distribution Data

GEORGIA

VACCINES ADMINISTERED

ADMINISTERED

12,754,280

ADMINISTERED PER 100K

122,591

RESIDENTS VACCINATED

At Least One Dose

6,152,677

% At Least One Dose

59%

Fully Vaccinated

5,419,958

% Fully Vaccinated

52%

Additional Dose

1,363,887

% Fully Vax with Additional Dose

25%

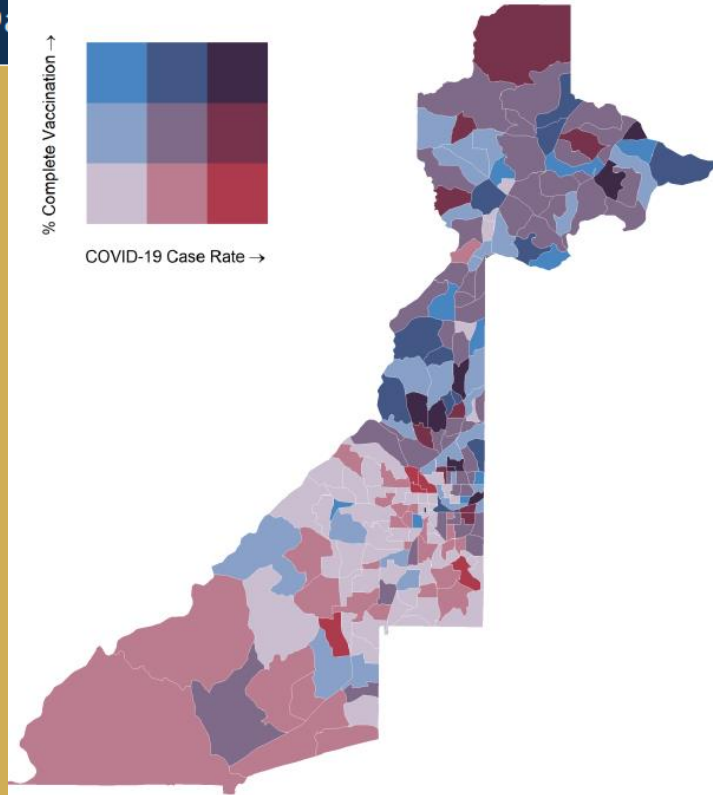
% Additional Dose

13%

% Complete Vaccination →



COVID-19 Case Rate →



- Totals are extracted from the DPH GRITS System
- Totals represent % of total population
- The Fulton County totals for those eligible for vaccination is: 66% one dose & 60% fully vaccinated
- Now tracking Boosters

GA DPH Vaccine Distribution Data

Fulton County

VACCINES ADMINISTERED

ADMINISTERED

1,393,379

ADMINISTERED PER 100K

134,470

RESIDENTS VACCINATED

At Least One Dose

645,238

% At Least One Dose

62%

Fully Vaccinated

584,349

% Fully Vaccinated

56%

Additional Dose

171,884

% Fully Vax with Additional Dose

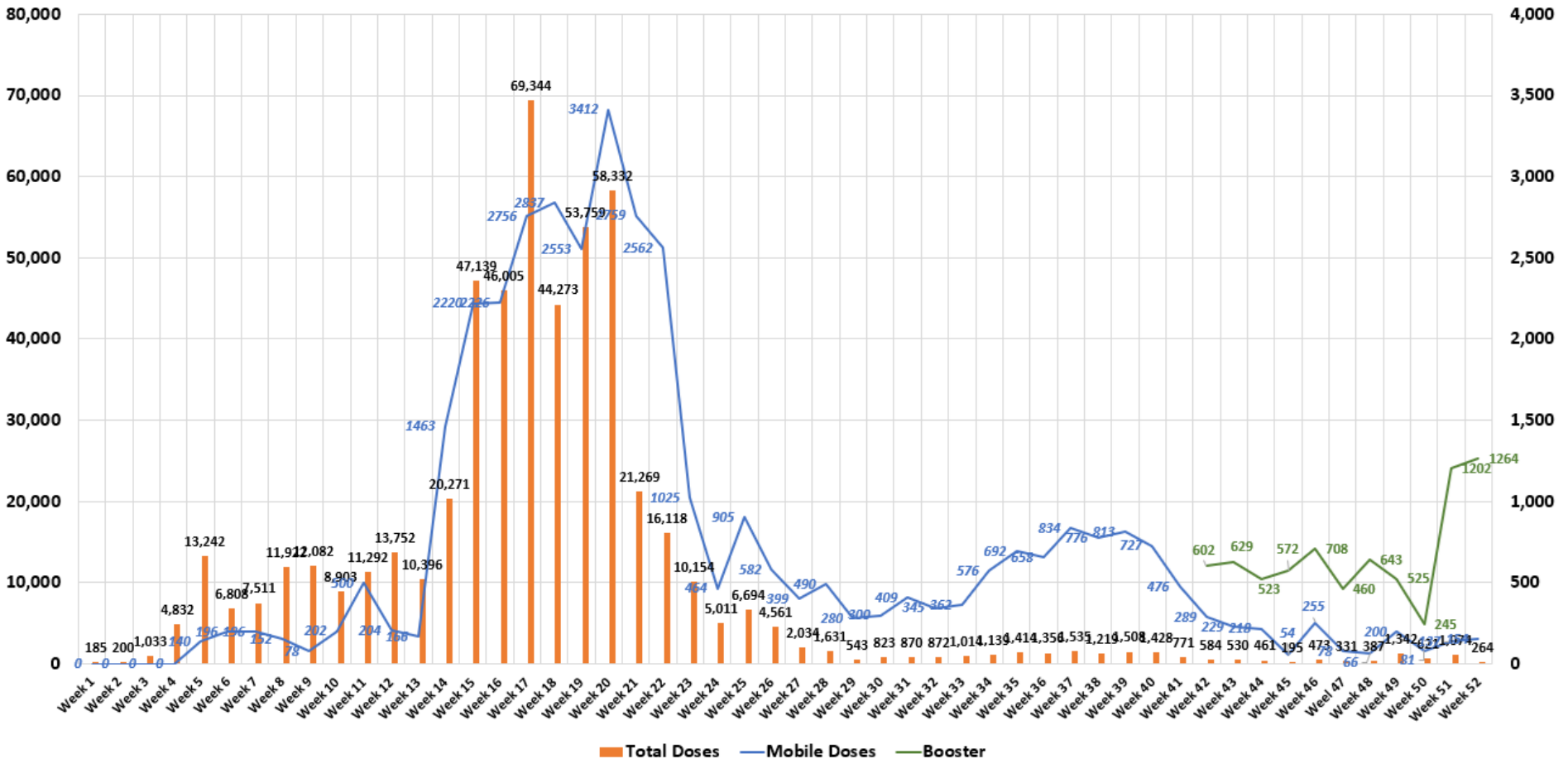
29%

% Additional Dose

16%

Vaccination Response

Through 12-12-21 Fulton County Vaccine 1st & 2nd dose Weekly Total & Weekly Mobile Total (5% ratio)



***1226 Pfizer 1st doses have delivered to 5-11 year-olds at our fixed locations**

Mobile Vaccine Response Update



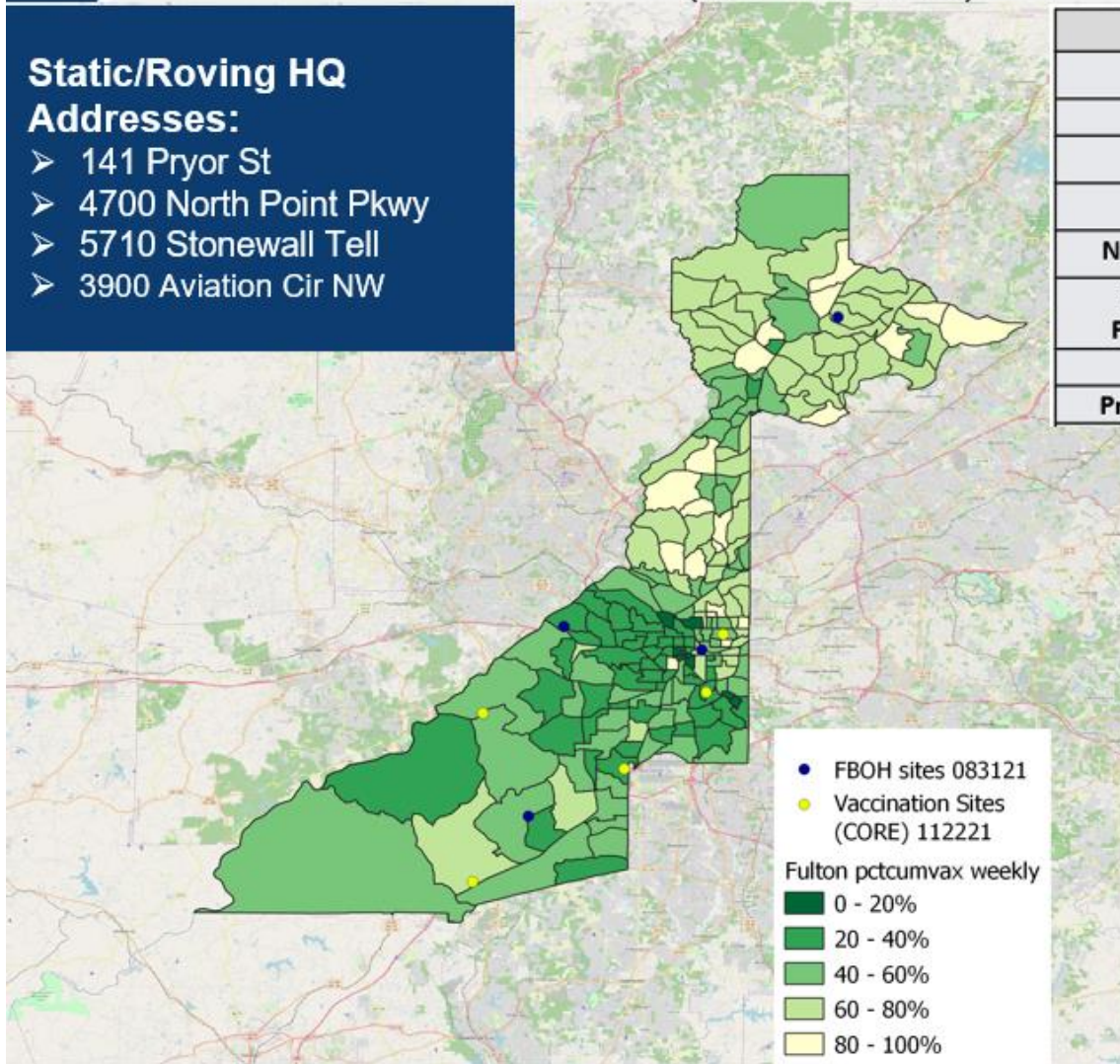
4

Fulton County Map of Mobile Vaccination Sites (6/1 – 12/13)

Static/Roving HQ

Addresses:

- 141 Pryor St
- 4700 North Point Pkwy
- 5710 Stonewall Tell
- 3900 Aviation Cir NW



Race		
	Number	Percentage
Black	8758	65%
White	2223	16.5%
Asian	316	2.42%
Native American	54	0.39%
Hawaiian or Pacific Islander	22	0.17%
Hispanic	1832	13.62%
Prefer Not to Say	333	2.56%

Number of vaccines administered = 13,472

Number of events supported = 19

Number of unique sites visited = 19

Vaccination Response

Current Vaccination Deployment Posture

- **4 Fixed locations (combined capacity up-to 900 Vax per day, as demand dictates):**
 - 141 Pryor St.
 - 4700 North Point Pkwy.
 - 5710 Stonewall Tell Rd.
 - 3900 Aviation Cir
- **4 Mobile Units (combined capacity 300 Vax per day) = up to, 20 events per week**
- **Extended hours offered**



Vaccination Response Path Forward 2022

Board of Health (Vax Capacity 250/day)

- Leverage Health Equity Grant and other funding sources to cover COVID response personnel costs
- Build staffing capacity for 6 health clinics: (250 vax/day total for 6 sites)
- Leverage existing Core EPI case investigation teams to perform at home testing & vaccine
- Continue to partner with Fulton County to coordinate efforts on:
 - ❖ Advertising and Community Outreach
 - ❖ Incentives (Fulton County to offer \$100 incentives to all 1st & 2nd doses at all locations starting in the new year)
 - ❖ Logistics (Emergency Management)

Vaccination Response Path Forward 2022

Fulton County (Vax Capacity 300/day)

CORE Keep 4 mobile units, 3 of 4 units will move to fixed locations

- **4700 (75 vax/day) Tuesday - Saturday**
- **Stonewall Tell (75 vax/day) Tuesday - Saturday**
- **Aviation (75 vax/day) Tuesday - Saturday**
- **141 Pryor (75 vax/day) Wednesday only**
- **1 unit available for mobile opportunities (75 vax/day)**

Flexible capability (will adjust days at fixed sites as demand wanes)

Mobile Vaccination: Sites this week

5

Upcoming Sites/Events (12/13 - 12/19)

Dec 13	Dec 14	Dec 15	Dec 16	Dec 17	Dec 18	Dec 19
	Carver STEAM College	Salem Bible Church	South Fulton Service Center	Wheat Street Tower	Bethany Baptist Church	
Villages at Carver Apartments	NSPOC	College Park Housing Authority	Impact Church	City Of Atlanta-Atlanta Airport	Celebration Bowl at Mercedes Benz Stadium	
	Material in Motion	Aviation Community Cultural Center	Mary Parker Foundation	Ashley Colletown Apartments		Impact Church
	Loews Atlanta Hotel	Mount Moriah Baptist Church	New Wine Christian Center	ServiceMaster Co.		



COMMUNICATION & OUTREACH UPDATE

Our goal: everage continued outreach & education to close the vax equity gap.



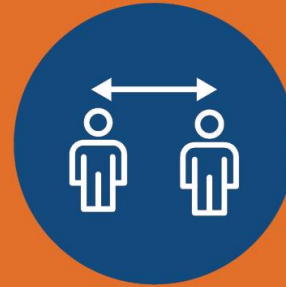
Alive & In Color Campaign
Phase II - Vaccination Outreach Complete
Planning for Phase III:
Calculated Risk Conversations

NEXT STEPS

- Continued focus in low vaccination census tracts: hyper targeted advertisements, education & outreach with trusted partners
- Leverage U.S. Department of Health & Human Services ad campaign: COVID Survivor Stories



STAY HEALTHY FULTON!



Masks and Social Distancing Encouraged

Other Ways to Stay Healthy:



Wash Your Hands and Get Your FREE COVID-19 and Flu Vaccinations

Updated Mask Signage & Safety Reminders for the Public & Employees



Questions?





Fulton County Government Reopening Plan

Gating Criteria

Reopening Indicators

CASES



Downward trajectory in the 7-day average of new positive tests within a 14-day period, and positivity rate below 5%

VAX OR TEST

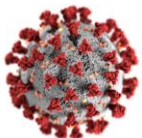


Ability to vaccinate employees to 80% goal and to test employees who choose alternative with results within 48-72 hours

EQUIPMENT



PPE and supplies for all employees interacting with public.



**Satisfy Before Proceeding to Phased Comeback*

COVID POSITIVE EMPLOYEES

LAST 2 WEEKS	
DEPARTMENT	POSITIVE
INFORMATION TECHNOLOGY	1
PUBLIC DEFENDER OFFICE	2
SENIOR SERVICES	1
GRAND TOTAL	4

COVID POSITIVE EMPLOYEES

CUMULATIVE			
DEPARTMENT	POSITIVE	DEPARTMENT	POSITIVE
ARTS/COOPERATIVE EXT	1	MAGISTRATE COURT	3
BHDD	4	MEDICAL EXAMINER	4
BOARD OF HEALTH	28	POLICE	11
BOARD OF COMMISSIONERS	2	PROBATE COURT	6
COUNTY ATTORNEY	3	PUBLIC DEFENDER OFFICE	8
COUNTY MANAGER	5	PUBLIC WORKS	44
COUNTY MARSHAL	13	PURCHASING	3
COMMUNITY DEVELOPMENT	3	REGISTRATION & ELECTIONS	6
DISTRICT ATTORNEY	17	SENIOR SERVICES	10
DREAM	26	SHERIFF	5
EMERGENCY MANAGEMENT	2	SOLICITOR GENERAL	5
EMERGENCY SERVICES	42	STATE COURT-ALL JUDGES	3
EXTERNAL AFFAIRS	2	STATE COURT-GENERAL	7
FINANCE	9	SUPERIOR COURT-ALL JUDGES	4
HUMAN RESOURCES	2	SUPERIOR COURT-CLERK	54
INFORMATION TECHNOLOGY	6	SUPERIOR COURT-GENERAL	31
JUVENILE COURT	22	TAX ASSESSOR	29
LIBRARY	30	TAX COMMISSIONER	38
GRAND TOTAL			488



Fulton County Government

Employee Compliance with Vaccination & Testing Policy

November 28, 2021 – December 4, 2021

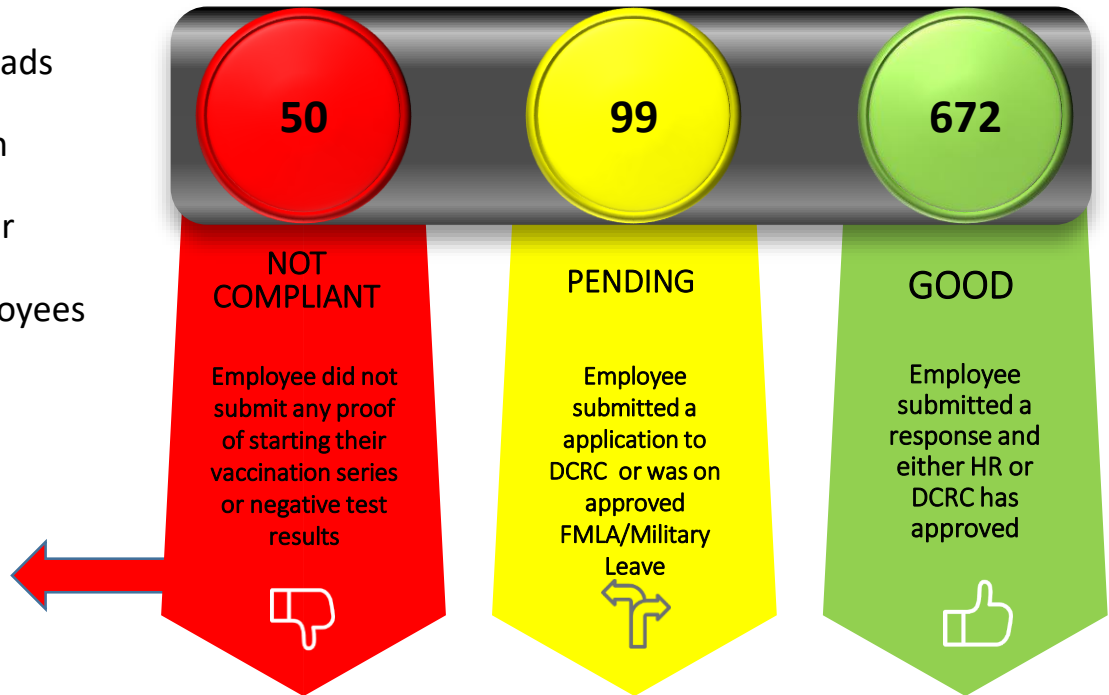
821 Unvaccinated Employees

How have we educated the workforce about the policy?

- Distributed policy to Department Heads
- Educated via FulcoNews
- Educational session led by Dr. Paxton
- Created information portal
- Held meeting with managers on their responsibility.
- Emails weekly to unvaccinated employees with policy & link

Suspension Status	# of Employees
1 Day	21
5 Day	12
10 Day	6
Dismissal	11*

* Still working with employees and Department Heads to ensure accuracy

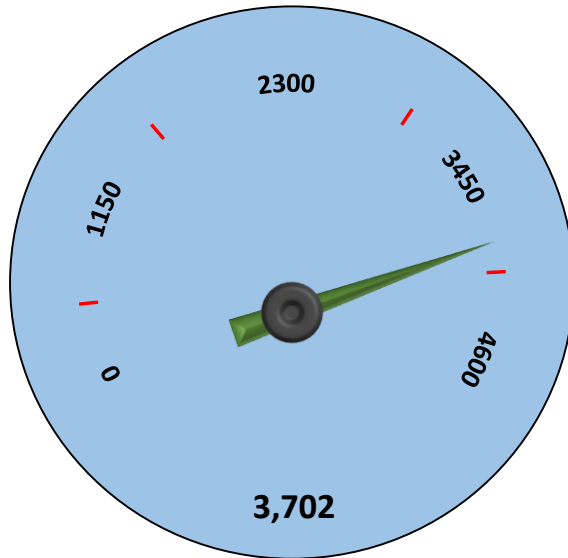




Fulton County Government Employee Vaccination Wellness Incentive Report

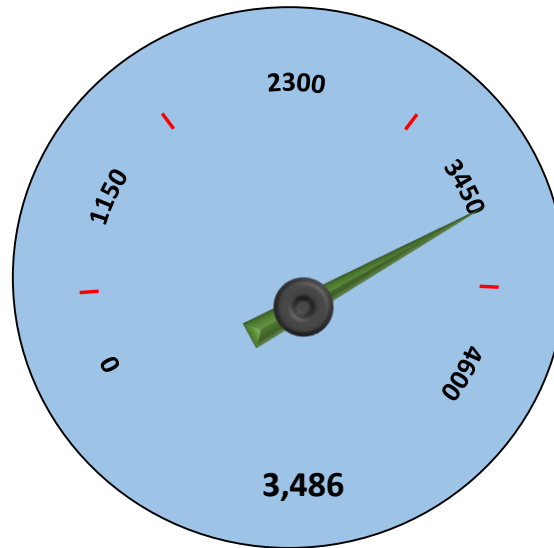
As of November 29, 2021

Applications



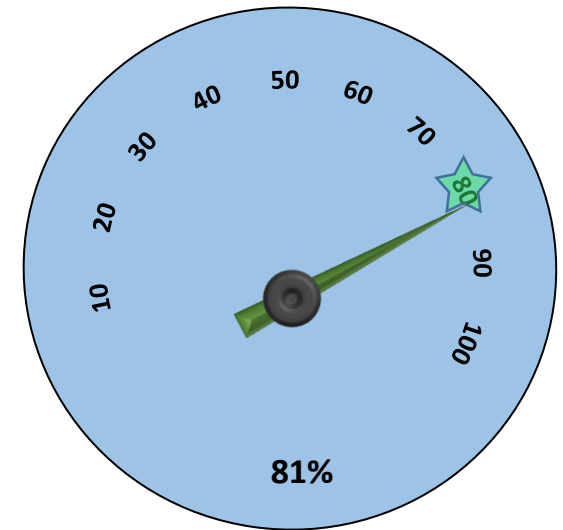
December 1 – 3,672
November 15 – 3,643
November 1 – 3,469
October 18th – 3,375
October 4th – 3,208
September 13th – 2,966
August 30th – 2,866
August 18th – 2,788

Approved



3,438
3,418
3,236
3,045
2,979
2,772
2,624
2,526

Vaccination %



79.5%
79%
75%
72%
70%
62%
59%
56%



Fulton County Government

ORCA Project Updates

FULTON COUNTY GOVERNMENT

Project ORCA

COVID -19 CASE REDUCTION

BOC Update
December 15, 2021



AGENDA

① Project Overview

② Hiring

③ Tracking & Reporting

④ Process Enhancements

⑤ Overall Progress

PROJECT OVERVIEW

Since the beginning of COVID-19, the Fulton County Court System has amassed a significant and unprecedented level of cases. Project ORCA will address this challenge by utilizing a combination of capacity expansion and productivity enhancement initiatives to expedite the case adjudication process.

Case Accumulation Defined

All cases (hearings, filings, applications) that were initiated before and during the pandemic (including those currently awaiting formal charging or filing) that have been impacted due to current limitations at various stages of the case administration process.

HIRING

All Offices and Departments have been allocated positions and are fully engaged in the hiring process

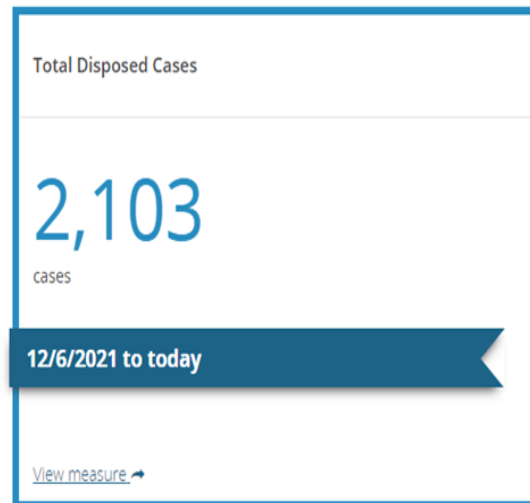
Courts/Offices	Number of Applications/Resumes Received	Number of Interviews Scheduled/Conducted	Number of Project ORCA Staff Hired	Number of Positions Approved
COSMC	136	55	8	13
District Attorney	220	91	71	74
Juvenile	1,102	186	14	15
Magistrate Court	116	17	8	8
Marshal	46			28
Probate Court	424	33	5	7
Public Defender	240	26	19	27
Sheriff	Postings being updated			50
Solicitor General	452	142	29	31
State Court	323	70	23	24
Superior Court	650	223	26	38
Human Resources	1	1	1	1
Strategy and Performance	33	3	2	2
Total	3,743	847	206	318

TRACKING & REPORTING

Overall

These measures combine initial open & active cases (as of the project start date) from State Court, Superior Court, Magistrate Court, the District Attorney, and the Solicitor General.

The descending gray line in the graph below shows the pace at which cases must be disposed to resolve all initial open & active cases within the project time period. The descending colored line in the graphs below shows the actual pace at which cases are being disposed.



TRACKING & REPORTING

Superior Court

Newly indicted cases from the District Attorney will add to Superior Court's caseload. This means that, while 'Initial Open & Active' cases 'locked in' when the project began, the 'Remaining Open & Active Cases' count can potentially be greater than the 'Initial Open & Active' count. If the District Attorney accuses cases at a faster rate than Superior Court disposes cases, 'Remaining Open & Active' will be greater than 'Initial Open & Active.'



TRACKING & REPORTING

District Attorney

District Attorney Initial Open & Active Cases

16.3K

cases

As of 12/6/2021

[View measure](#)

District Attorney Disposed or Accused Cases

93

cases

12/6/2021 to today

[View measure](#)

District Attorney Remaining Open & Active Cases

16.2K

cases

12/6/2021 to today

[View measure](#)

TRACKING & REPORTING

State Court

Newly accused cases from the Solicitor General will add to State Court's case load. This means that, while 'Initial Open & Active' cases 'locked in' when the project began, the 'Remaining Open & Active Cases' count can potentially be greater than the 'Initial Open & Active' count. If the Solicitor General accuses cases at a faster rate than State Court disposes cases, 'Remaining Open & Active' will be greater than 'Initial Open & Active'.



TRACKING & REPORTING

Solicitor General

Solicitor General Initial Open & Active Cases

56.4K

cases

As of 12/6/2021

[View measure](#)

Solicitor General Disposed or Accused Cases

167

cases

12/6/2021 to today

[View measure](#)

Solicitor General Remaining Open & Active Cases

56.3K

cases

12/6/2021 to today

[View measure](#)

TRACKING & REPORTING

Magistrate Court

Magistrate Court Initial Open & Active Cases

39.6K

cases

As of 12/6/2021

[View measure](#) ↗

Magistrate Court Disposed Cases

1,353

cases

12/6/2021 to today

[View measure](#) ↗

Magistrate Court Remaining Open & Active Cases

38.2K

cases

12/6/2021 to today

[View measure](#) ↗

PROCESS ENHANCEMENTS

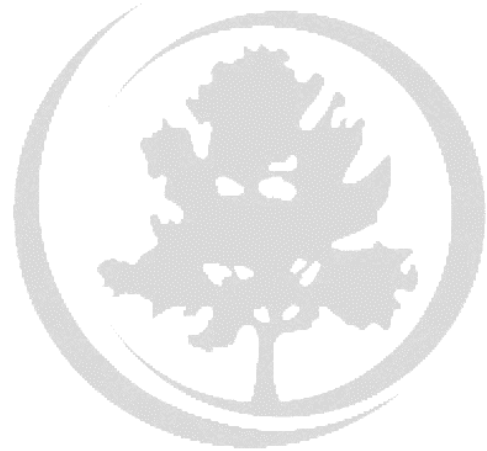
The Courts and Prosecutors are utilizing a range of process changes and refinements to accelerate the case reduction effort.

- ✓ Leveraging Technology
 - Continuing to flex the ZOOM platform for daily court calendars
 - Virtual Jury Selection for Superior and State Courts
- ✓ Case Triage
 - Charge-severity triage of in-custody jail cases
 - Charge count triage of Non-Complex bond cases
- ✓ Diversion
 - District Attorney Adult Diversion Program
 - Solicitor General Joint Pandemic Case Adjudication Process (JP CAP)

OVERALL PROGRESS



- ✓ Significant progress toward recruiting goal
- ✓ Courtroom Renovations complete and calendared.
- ✓ Space/courtroom utilization plan to be implemented in January 2022
- ✓ New employee onboarding and technology deployment going well
- ✓ Calendars using the alternative Case Triage methods set for hearings



QUESTIONS



Fulton County Government

Emergency Rental & Mortgage
Assistance Updates

Emergency Rental Assistance

Phase II

PHASE II - QUICK STATS

23,368	Applications initiated
12,771	Applications submitted
10,281	Applications adjudicated

Emergency Rental Assistance

Phase II

PROGRAM UPDATES

REALLOCATION - STATE OF GEORGIA

- Fulton **FULLY EXPENDED** the direct assistance amounts received from Treasury for ERA I and ERA II
- DCA submitted a Treasury request to allow “**Voluntary Reallocation**” of \$25M of the State’s ERA I funds to Fulton

RECOMMENDED NEXT STEPS

FUNDING
EXPENDED

BRIDGE
WITH ARPA

TREASURY
APPROVAL

SET AWARD
UP AS
GRANT

Mortgage Assistance

Georgia Administered - \$354M Statewide

MORTGAGE ASSISTANCE UPDATES

- There are no updates on Mortgage Assistance.
- Georgia's spend proposal has not yet been approved by Treasury.



QUESTIONS



Emergency Response Reserve & American Rescue Plan Act Funds Update

COVID-19: Recovery Funds Plan

Economic Recovery and
Operational Resiliency Plan

December 10, 2021



Consolidated Covid Response Plan

<i>In Millions \$</i>	12.10.2021	12.10.2021	12.10.2021	Change in Budget Previous Period	Change in Expenses Previous Period
	Budget	Comm itm ents	Expenses		
EERF - General Fund	\$ 14.9	\$ 12.1	\$ 10.5	\$ -	\$ 0.0
Communications	2.0	1.7	1.6	-	-
Child Care / Healthcare / Other	1.3	0.5	0.5	-	-
Payment to Employees	6.6	6.6	6.6	-	-
Information Tech - Virtual Support	2.0	-	-	-	-
2020 Obligation	3.0	3.3	1.9	-	0.0
American Rescue Act	216.9	60.8	50.2	-	4.7
Health Infrastructure	17.3	-	-	-	-
Pandemic Proof County Facilities	28.0	1.7	0.5	-	-
Day Porters / Cleaning	2.6	2.4	0.8	(1.5)	0.0
Child Care / Healthcare / Other	1.5	0.5	0.4	-	0.0
Premium Pay for Employees	3.4	3.4	3.4	-	-
PPE- County Employees	5.0	1.7	1.7	-	-
Court Backlog Project	75.0	4.3	3.6	-	0.1
Information Tech - Virtual Support	8.0	0.8	0.6	-	0.1
Safety Net Services - CSP	8.0	7.0	7.0	-	0.1
Long Term Revolving Loan Program	3.9	-	-	(1.3)	-
Food Insecurity	6.1	1.7	0.8	-	0.1
Job Training	2.0	0.4	0.4	(0.7)	0.3
ERAP 2 & High Need	29.0	27.4	22.5	4.0	3.3
ERAP -1 and 2 Additional Operational Costs	8.6	8.6	7.8	0.0	0.6
Testing Vaccination	17.4	0.9	0.6	-	0.0
Vaccine Incentive Program	1.2	0.0	0.0	(0.5)	-
Consolidated Appropriations Act	18.0	17.8	17.7	-	0.0
ERAP 1	18.0	17.8	17.7	-	0.0
FEMA Related Expenses	\$ 32.8	\$ 22.4	\$ 20.4	-	0.1
Total	\$ 282.6	\$ 113.1	\$ 98.8	-	4.8
Reserve	\$ 31.3				

Cash Flow Projections – COVID 19 Response

In Millions \$

Uses of Funds	2021	2022	2023	2024	Total
A EERF - General Fund	14.9	-	-	-	14.9
B American Rescue Act	58.7	94.3	61.4	2.6	216.9
C Consolidated Appropriations Act	18.0	-	-	-	18.0
D FEMA Related Expenses	23.0	9.8	-	-	32.8
Projected Annual Uses	\$ 114.6	\$ 104.1	\$ 61.4	\$ 2.6	\$282.6
Sources of Funds	2021	2022	2023	2024	Total
A EERF	14.9	16.4			31.3
B American Rescue Act	128.4	103.4			231.8
C Consolidated Appropriation Act	18.0				18.0
D FEMA Reimbursement at 100% over 3 years	5.9	10.0	16.9		32.8
Projected Annual Sources	\$ 167.2	\$ 129.8	\$ 16.9	\$ -	\$313.9
Cash Balance EOY - 100% FEMA Reimbursement	52.6	78.3	33.8	31.3	31.3
Cash Balance EOY - 50% FEMA Reimbursement	52.6	78.3	17.4	14.9	14.9

Emergency Rental Assistance

Funded - Consolidated Appropriations Act

ERAP -1

Received - Mid/January 2021

in Millions \$

Regular

Allocation	Received by FC	YTD Expense
\$18.0	\$18.0	\$17.7

Expense does not include outstanding POs

Funded - American Rescue Plan Act

ERAP -2

Received - Mid/May and Mid/October 2021

in Millions \$

Regular and High Need

Allocation	Received by FC	YTD Expense
\$24.9	\$24.9	\$22.5

ARPA

Supplemental Allocation - Dec 2021

County Allocation of ARPA funding for Administration

\$4.0	\$4.0	\$0.0
\$8.6	\$8.6	\$6.6

Total

\$55.5	\$55.5	\$46.8
--------	--------	--------





QUESTIONS