

Fulton County COVID-19 Response Update

March 2, 2022

Board of Commissioners

OVERVIEW

Incident Response Update

- Vaccination Response
- COVID 19 Variant - Omicron

Reopening Update

- Vax or Test Initiative
- Reopening Status

ERAP Phase II Update

2022 COVID Funding Update

- Update - COVID 19 Reserve & ARPA Spend

INCIDENT RESPONSE REVIEW

Major Take Away

Boosters are the most effective way to defend against COVID-19 severe health impacts and death

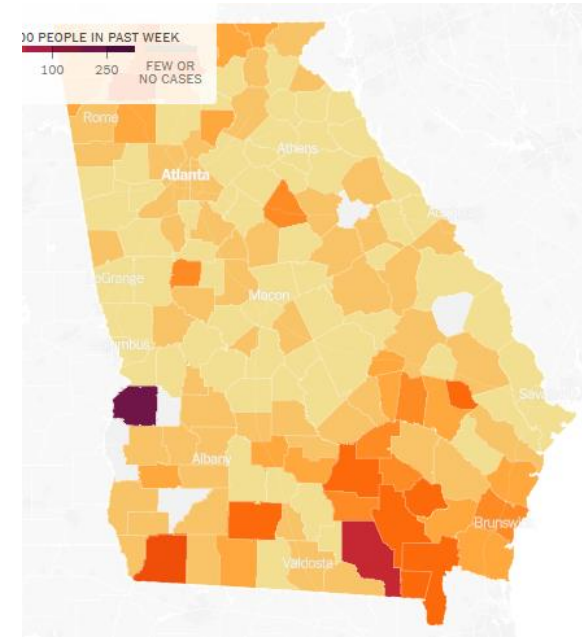
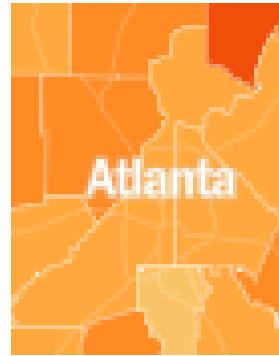
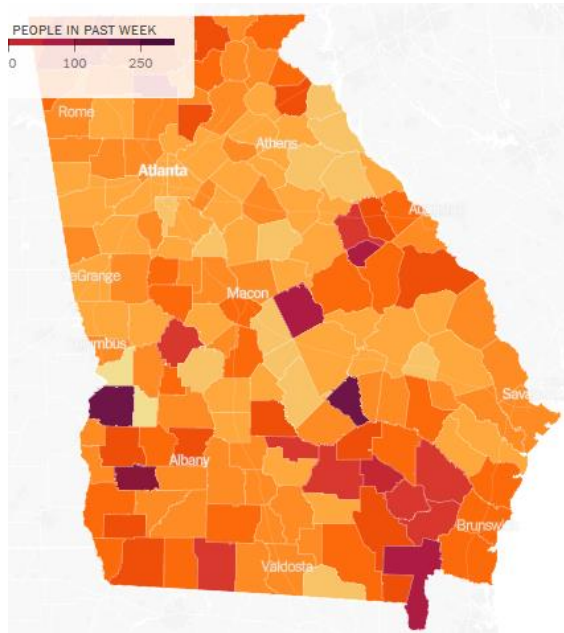
Unvaccinated population makes up...

- 49% of all new cases
- 91% of all new hospitalizations
- 96% of all new deaths

- The 7-day average for cases, hospitalizations, % positives are trending downward
- Updated CDC Masking Guidance has Fulton County in a green (low risk) level.
- 95.5% of all new cases are from the OMICRON variant
- February 2022 was the deadliest COVID month ever in Fulton County, with **159** Covid Deaths)
- Fulton County Covid hospital bed availability continues to be in a severe shortage situation

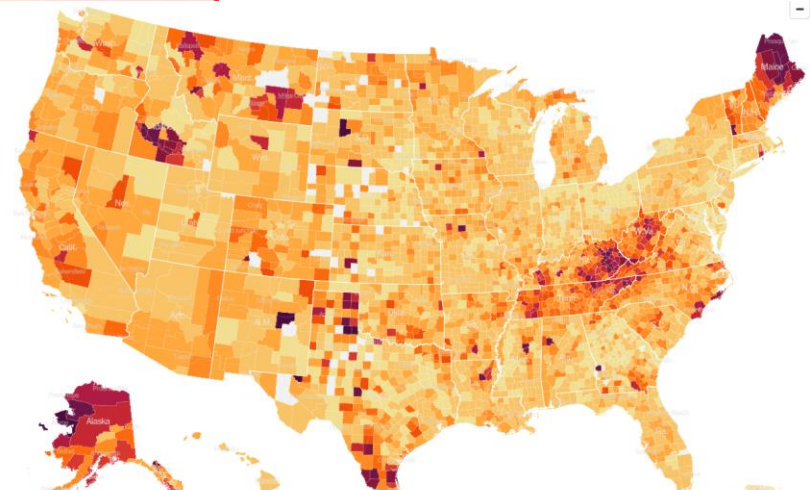
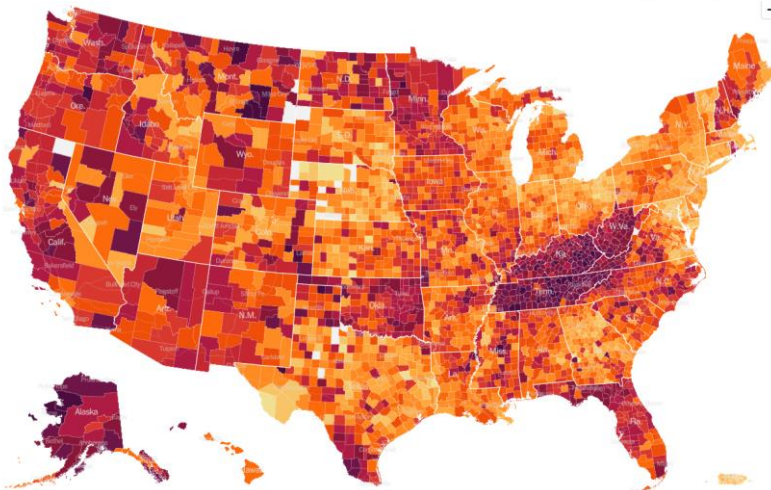
Incident Response Update (Heat Maps)

February 16th vs March 2nd



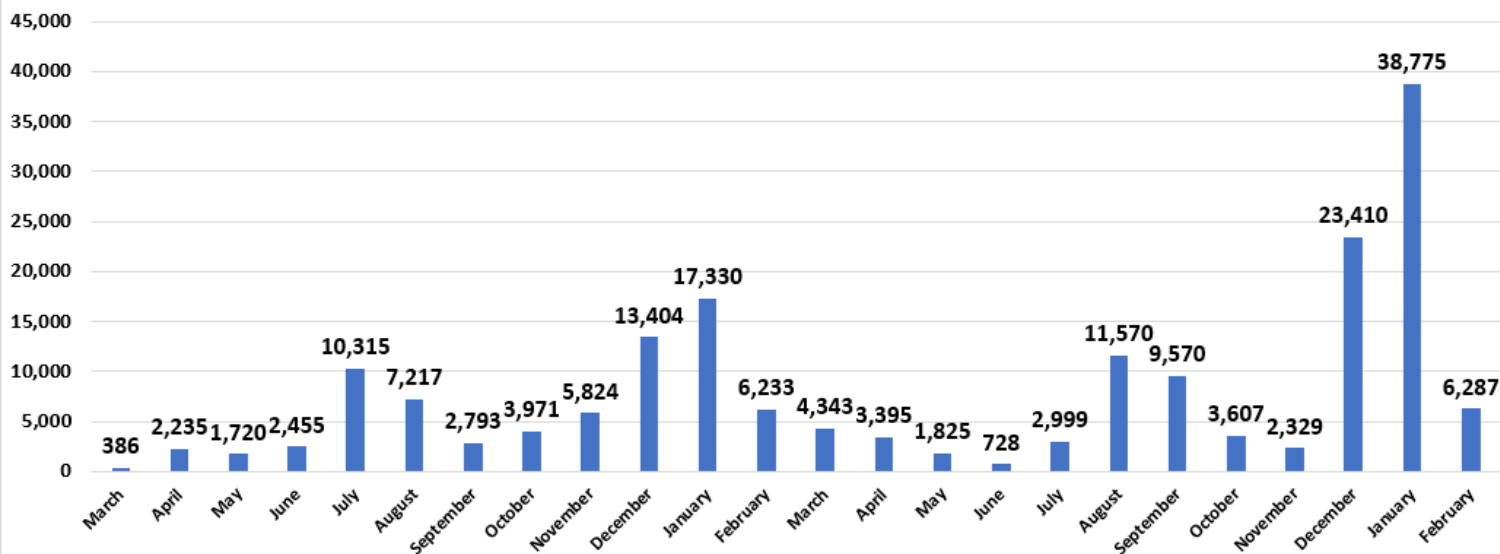
Hot spots

AVERAGE DAILY CASES PER 100,000 PEOPLE IN PAST WEEK

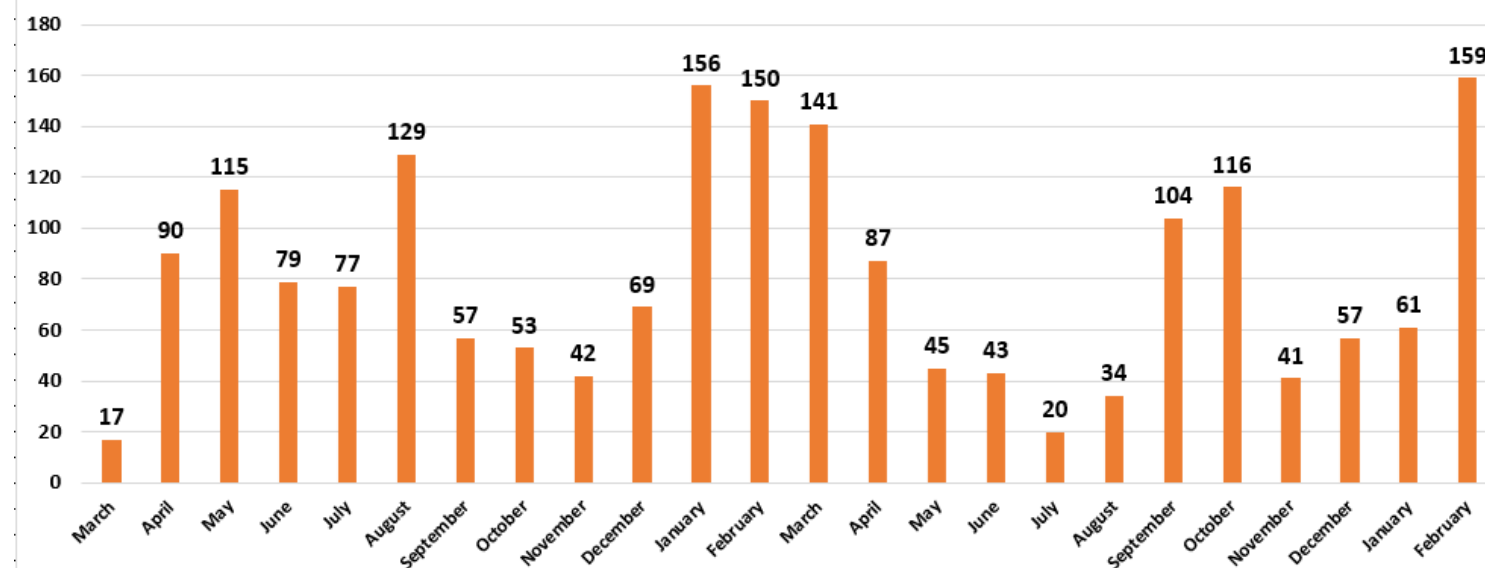


Incident Response Update

Fulton County Cases by Month



Fulton County Deaths by Month



Incident Response Update Risk Level (New)



Fulton County Cases per 100K = 85.06%
COVID Hospital Admissions per 100K = 8.26%

People may choose to mask at any time.

People with symptoms, a positive test, or exposure to someone with COVID-19 should wear a mask.

Low

- Stay [up to date](#) with COVID-19 vaccines
- [Get tested](#) if you have symptoms

Medium

- If you are [at high risk for severe illness](#), talk to your healthcare provider about whether you need to wear a mask and take other precautions
- Stay [up to date](#) with COVID-19 vaccines
- [Get tested](#) if you have symptoms

High

- Wear a [mask](#) indoors in public
- Stay [up to date](#) with COVID-19 vaccines
- [Get tested](#) if you have symptoms
- Additional precautions may be needed for people [at high risk for severe illness](#)

CDC's previous Risk Matrix

- 7 day average
- < 50 cases per 100K
- < 7.5 % positive per 100 K

CDC's CURRENT Risk Matrix

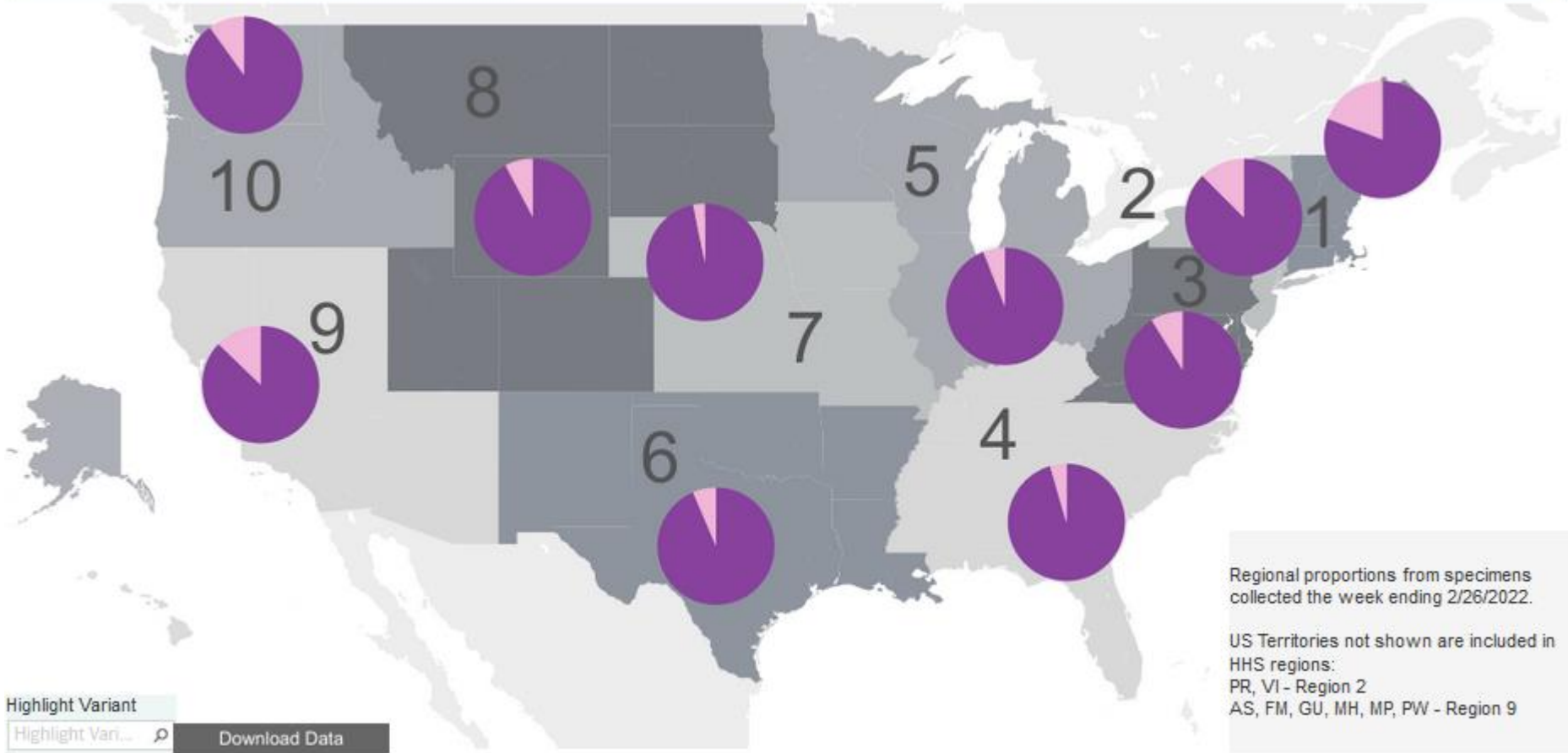
- 7 day average
- < 200 cases per 100K
- < 10 New COVID Hospital Admissions

COVID-19 Community Levels – Use the Highest Level that Applies to Your Community				
New COVID-19 Cases Per 100,000 people in the past 7 days	Indicators	Low	Medium	High
Fewer than 200	New COVID-19 admissions per 100,000 population (7-day total)	<10.0	10.0-19.9	≥20.0
	Percent of staffed inpatient beds occupied by COVID-19 patients (7-day average)	<10.0%	10.0-14.9%	≥15.0%
200 or more	New COVID-19 admissions per 100,000 population (7-day total)	NA	<10.0	≥10.0
	Proportion of staffed inpatient beds occupied by COVID-19 patients (7-day average)	NA	<10.0%	≥10.0%

Incident Response Update



United States: 2/20/2022 – 2/26/2022 NOWCAST



Lineages called using pangoln-designation (PANGO)-v1.2.124, pangolin v3.1.20, pangolnLEARN version 02/02/22 and Scorprio v0.3.16.
Lineage BA.1.1 is aggregated with B.1.1.529 at the regional level as it currently cannot be reliably called in each region.

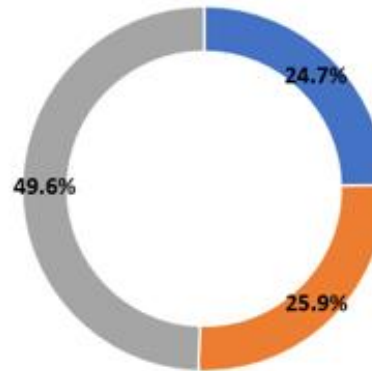
Updated March 1, 2022

Omicron now accounts for 95.5% of all new cases in Georgia

Incident Response Update



Breakthrough Cases Fulton County (last 14 Days)
2/23/22



- Up to date 3 doses New Cases
- Fully Vaccinated New cases
- Un-Vaccinated New cases

Fig. 32. Confirmed Cases Hospitalized for Any Reason by
Vaccination Status



- Fully Vaccinated Without Booster
- Fully Vaccinated With Booster
- Unvaccinated

Fig. 33. Confirmed Covid-19 Deaths by Vaccination Status



- Fully Vaccinated
- Fully Vaccinated With Booster
- Unvaccinated

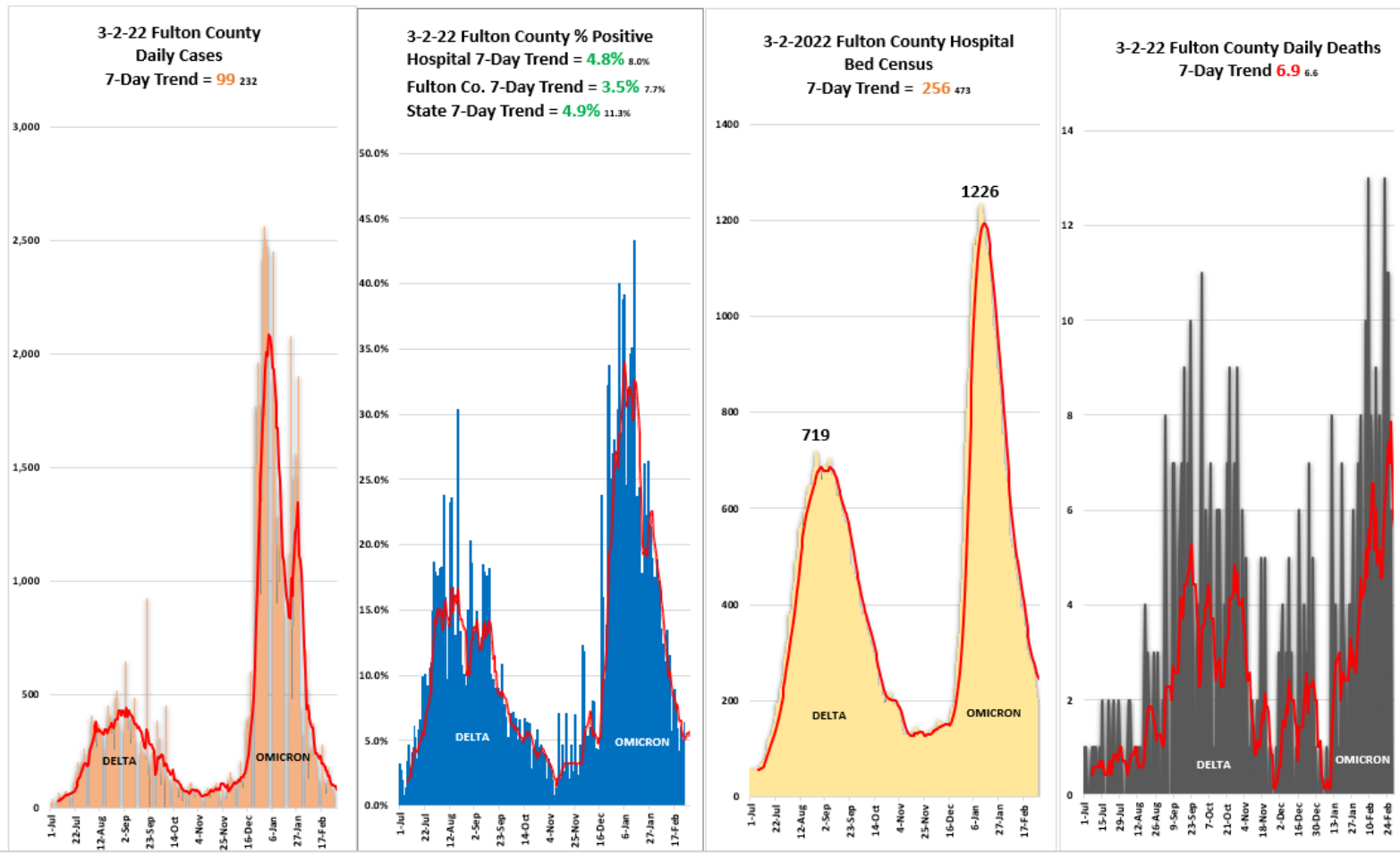
Incident Response Update



- **Fulton County COVID-19**

- 7-day average for cases is **99**, down **136%** since the last BoC mtg.
- 7-day average for % positive is **3.5%**, down **120%** since the last BoC mtg.
- 7-day average, hospitalizations is **256**, down **79%** since the last BoC mtg.
- 7 day average, for deaths is **6.9**, up **20%** since the last BoC mtg.

Fulton County Dashboard totals for 3-2-2022: Tests = 3,340 / Cases = **38** / % Positive = **3.5%** / Hosp COVID19 Census = **205** / Deaths = **6**



Incident Response Update



Fulton County SCORECARD 3/2/2022

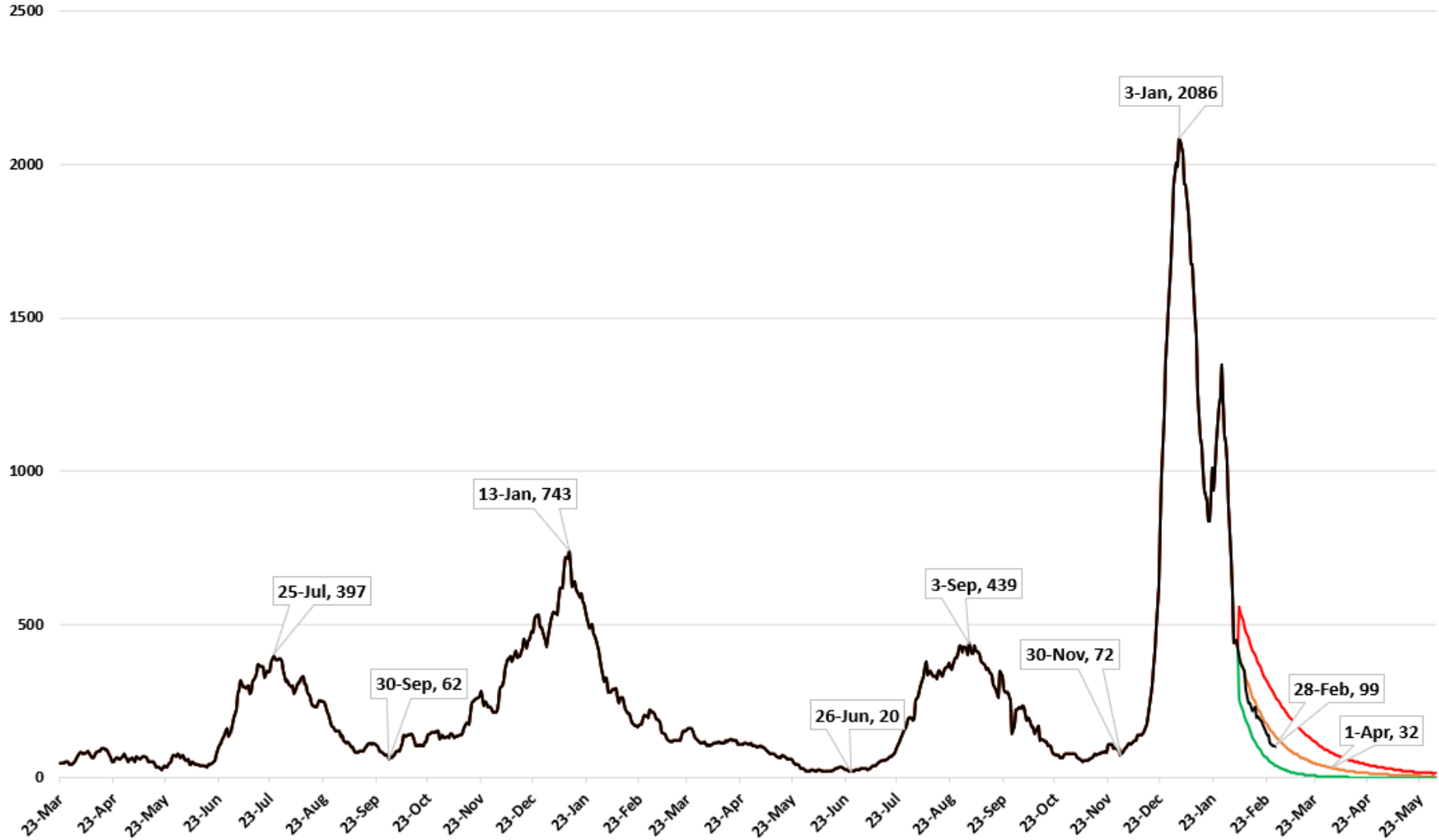
Metric	Status (7-day average) =*	Metric
Testing (Demand & Capacity)	*3282 ⬇️	Current capability is 8,000 / day Daily Testing: over 2857 , 1428 - 2857, less than 1428
Testing (Results)	12-36 hrs ⬆️	Time to receive results: 0 - 48 , 49 - 96, over 96
Cases	*99 ₂₃₂ ⬇️	Less than 20 , 20 – 74 a day, 75 to 249 , over 250
Fulton positivity rate % +	*3.5% _{7.7%} ⬇️	Less than 1% , 1% - 5% , 5% - 10% , over 10%
Hospitalizations COVID census	*256 ₄₇₃ ⬇️	Less than 50 , 50 – 200 , 201 - 349 , over 350
Hospital Bed Availability	*9.1% ⬆️ *7.6% Adult	Open Beds: over 20% , 15% - 20% , Less 15%
Hospital CCU Bed Availability	*23.2% ⬆️ *21.6% Adult	Open CCU Beds: over 20% , 15% - 20% , less 15%
Hospital Vent Availability	*64.3% ⬆️	Open Vents: over 25% , 15% - 25% , less 15%
COVID Deaths	*6.9 _{6.6} ⬆️	Less than .25 , .25 – 2.5 , 2.5 – 5 , over 5
Morgue census	*90 ₉₇ ⬇️	Less Than 75 , 75 – 90 , over 90
COVID Vaccine Administered Booster	536,745 92% ⬇️ 13,968 boosters	More than 75% , 50% - 75% , less than 50%

Incident Response Update



Fulton County Daily Case Rate Projection 2-28-22

— EstInfectionsMP — EstInfectionsBC — EstInfectionsWC — Actual



VACCINATION RESPONSE

Vaccines administered at
Fulton County fixed & mobile
sites to date

- **536,745** 1st / 2nd fixed site doses
- **13,968** boosters
- **41,623** mobile doses



INCENTIVES

**Offered for 1st & 2nd
doses at all BoH / FC
fixed and mobile
locations**

Providing vaccination opportunities
at major construction sites

Continued partnership with Fulton County Schools, as well as Atlanta Public Schools

- APS - 3 events in low vaccination uptake areas
- FCS - 1 event in a low vaccination uptake area

Providing vaccination opportunities at Atlanta Hawks games



Vaccination Response



GEORGIA

[Download Published Data](#)

VACCINES ADMINISTERED

ADMINISTERED

14,356,041

ADMINISTERED PER 100K

137,987

RESIDENTS VACCINATED

At Least One Dose

6,532,686

% At Least One Dose

63%

Fully Vaccinated

5,740,965

% Fully Vaccinated

55%

Additional Dose

2,256,825

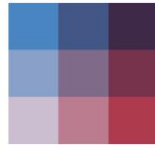
% Fully Vax with Additional Dose

39%

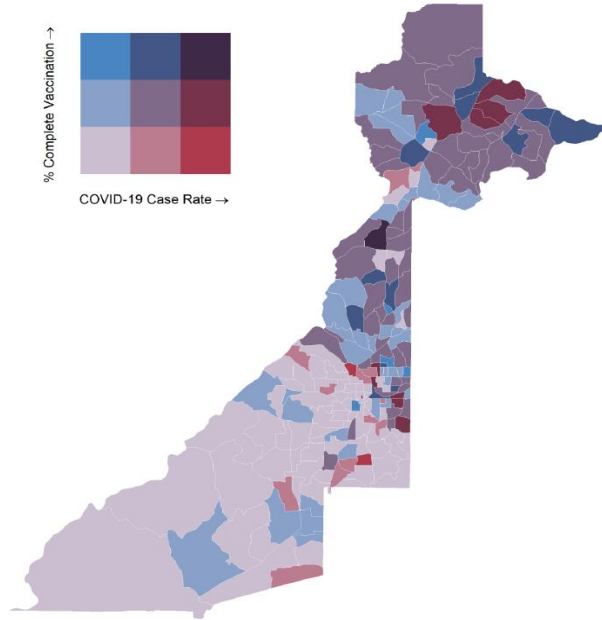
% Additional Dose

21%

% Complete Vaccination →



COVID-19 Case Rate →



- Fulton County totals for those eligible for vaccination is: 69% one dose & 64% fully vaccinated
- Boosters - 46% of the eligible population is “up to date” (286,956 citizens)

Fulton County

[Download Published Data](#)

VACCINES ADMINISTERED

ADMINISTERED

1,563,582

ADMINISTERED PER 100K

150,895

RESIDENTS VACCINATED

At Least One Dose

669,773

% At Least One Dose

65%

Fully Vaccinated

612,659

% Fully Vaccinated

59%

Additional Dose

286,956

% Fully Vax with Additional Dose

46%

% Additional Dose

27%

Mobile Vaccine Response Update

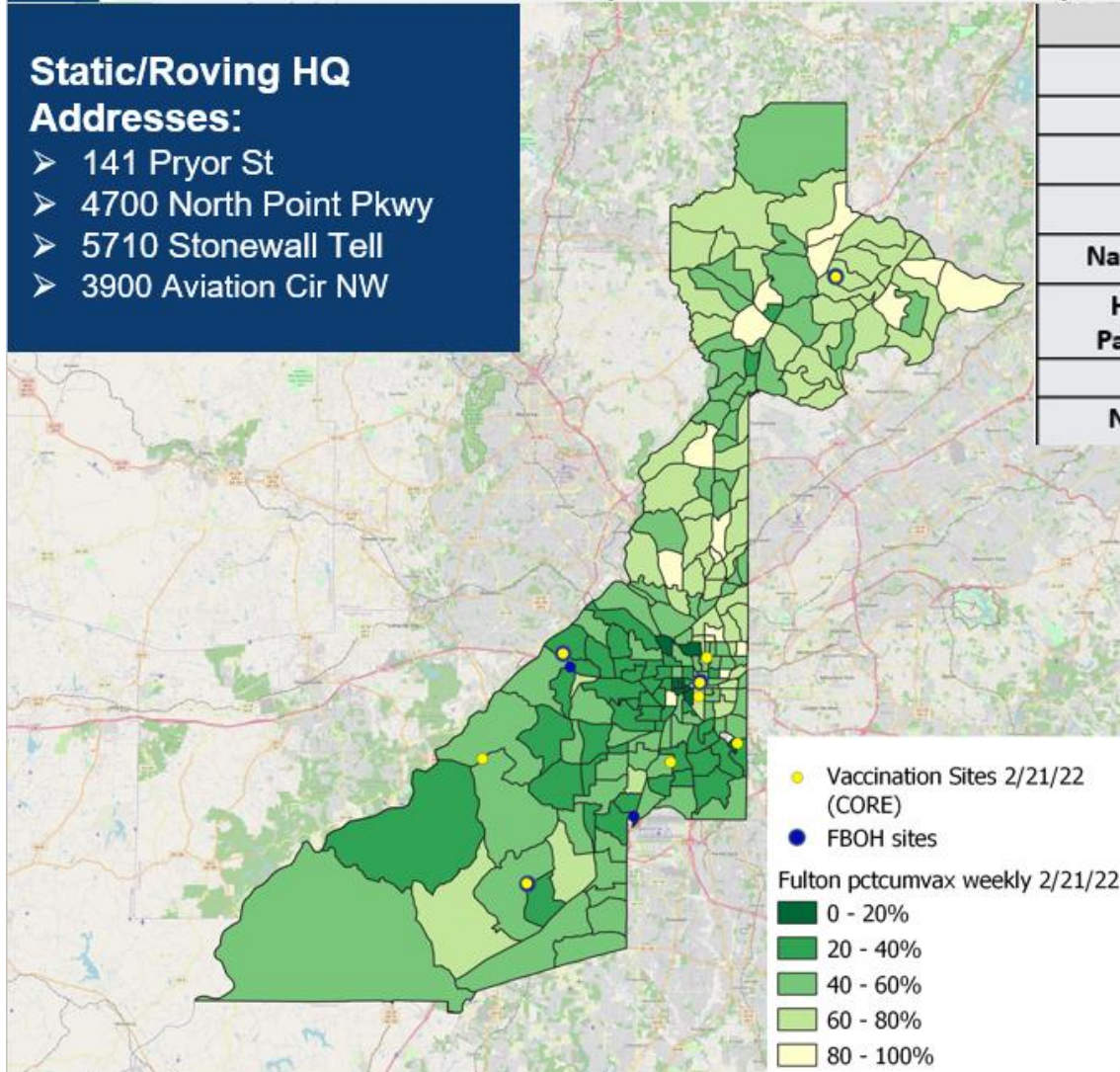


3 Fulton County Map of Mobile Vaccination Sites (06/01/21- 02/28/22)

Static/Roving HQ

Addresses:

- 141 Pryor St
- 4700 North Point Pkwy
- 5710 Stonewall Tell
- 3900 Aviation Cir NW



Race		
	Number	Percentage
Black	10,410	61.15%
White	3139	18.44%
Asian	723	4.25%
Native American	91	0.53%
Hawaiian or Pacific Islander	25	0.01%
Hispanic	2126	12.49%
No Response	509	2.99%

Number of vaccines administered = 17,023

Number of events supported = 830

Number of unique sites visited = 852

Vaccine event at Parklane elementary netted 107 vaccines administered

At-Home COVID Test Kits

Four Key Assumptions:

1. Public demand for testing has waned, walkup appointments now available
2. Covid-19 positivity rate is trending downward
3. Health equity issues persist, cost and access challenges
4. Federal home test kits are available to ordered by Fulton County residents

Variables	Board of Health	Federal Government	Fulton County
Projected Inventory	62,000	1,000,000,000 (phased delivery)	53,000 (Fulton County) 48,495 (Ryan White) 9,700 (ESG) Total Kit Order : 111,195
Kit Type	Flow Flex/Quidel	iHealth	Quidel
Cost/Funding	\$16.00 per unit/Equity grant (\$750,000)	\$4 billion-Coronavirus Relief Bill	\$10.31 per unit \$546,430- ARPA \$500,000- Ryan White \$100,000-ESG
Consumer Access Points	<ul style="list-style-type: none"> Libraries Homeless Shelters CORE/CBOs Health Clinics 	<ul style="list-style-type: none"> Direct to consumer-government website launch 1/19/2022-COVIDtests.gov School support Quantity 4 per household Private insurance reimbursement 8 kits per month Medicare, Spring 2022 	<ul style="list-style-type: none"> 15 Library pickup sites Senior Centers CSP Partners for Health Equity Goals Faith Partners for Health Equity Goals HIV Care Providers Homeless Services Providers County Employees
Target Population	Fulton County residents with emphasis on southern part of county, health equity goals	U.S. households	Fulton County residents with emphasis on equity targets



Questions?



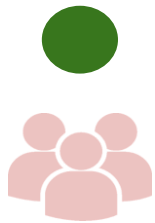


Fulton County Government Reopening Plan

Gating Criteria

Reopening Indicators

CASES



Downward trajectory in the 7-day average of new positive tests within a 14-day period, and positivity rate below 5%

VAX OR TEST

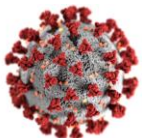


Ability to vaccinate employees to 80% goal and to test employees who choose alternative with results within 48-72 hours

EQUIPMENT



PPE and supplies for all employees interacting with public.



**Satisfy Before Proceeding to Phased Comeback*

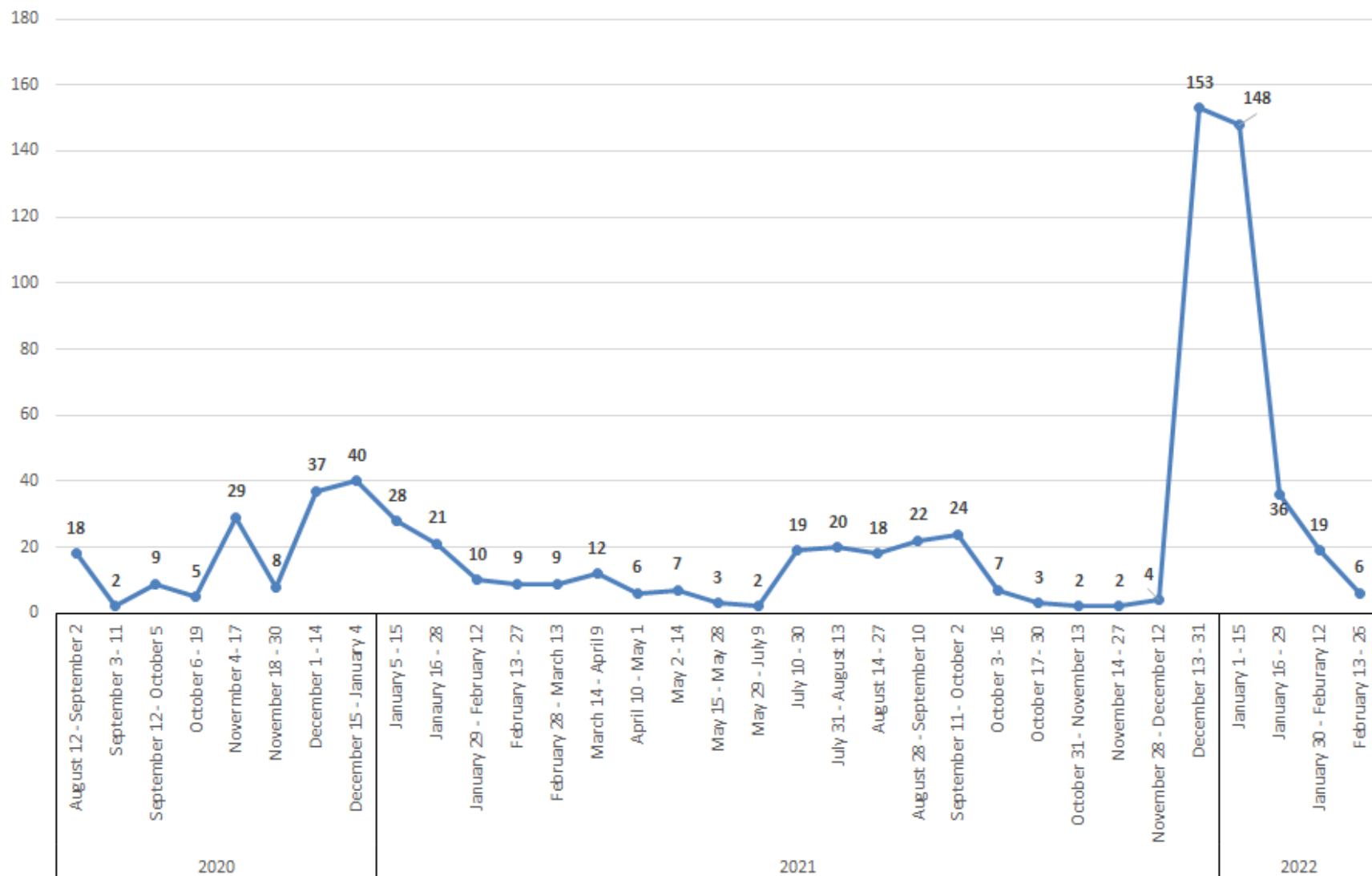
COVID POSITIVE EMPLOYEES

February 13, 2022 - February 26, 2022

Department	Positive	Grand Total
MAGISTRATE COURT	3	3
STATE COURT-ALL JUDGES	1	1
STATE COURT-GENERAL	2	2
GRAND TOTAL	6	6



Fulton County
Reported Employee COVID Positive Tracker
as of February 26, 2022



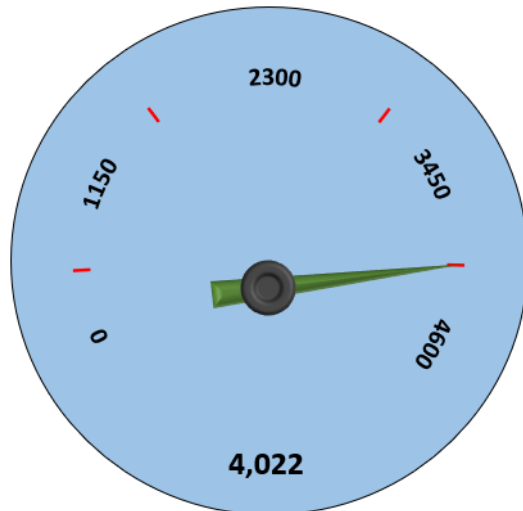
COVID POSITIVE EMPLOYEES

CUMULATIVE			
DEPARTMENT	POSITIVE	DEPARTMENT	POSITIVE
ARTS/COOPERATIVE EXT	1	MAGISTRATE COURT	6
BHDD	8	MEDICAL EXAMINER	8
BOARD OF HEALTH	28	POLICE	17
BOARD OF COMMISSIONERS	5	PROBATE COURT	10
COUNTY ATTORNEY	4	PUBLIC DEFENDER OFFICE	32
COUNTY MANAGER	7	PUBLIC WORKS	71
COUNTY MARSHAL	27	PURCHASING	7
COMMUNITY DEVELOPMENT	3	REGISTRATION & ELECTIONS	11
DISTRICT ATTORNEY	17	SENIOR SERVICES	33
DCRC	1	SHERIFF	8
DREAM	43	SOLICITOR GENERAL	19
EMERGENCY MANAGEMENT	2	STATE COURT-ALL JUDGES	3
EMERGENCY SERVICES	54	STATE COURT-GENERAL	9
EXTERNAL AFFAIRS	9	SUPERIOR COURT-ALL JUDGES	5
FINANCE	27	SUPERIOR COURT-CLERK	84
HUMAN RESOURCES	3	SUPERIOR COURT-GENERAL	49
INFORMATION TECHNOLOGY	12	TAX ASSESSOR	60
JUVENILE COURT	32	TAX COMMISSIONER	80
LIBRARY	51	GRAND TOTAL	847

Employee Compliance

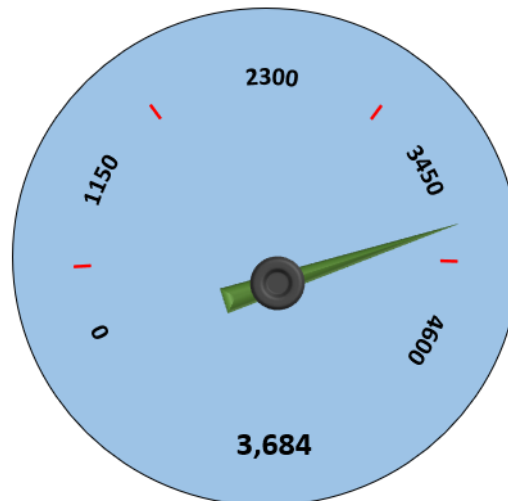
Vaccination & Testing Policy

Applications



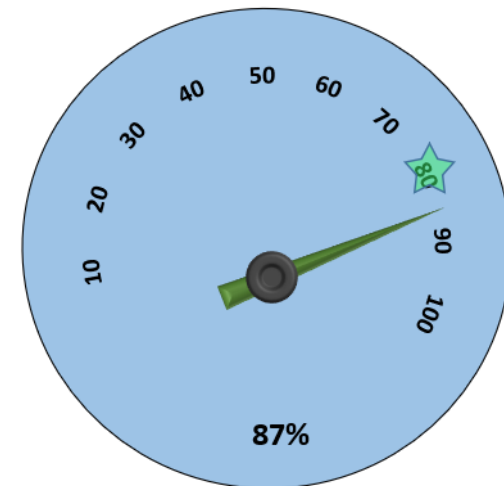
February 16 – 3,996
February 2 – 3,968
January 19 – 3,802
January 5 – 3,762
December 15 – 3,702
December 1 – 3,672
November 15 – 3,643
November 1 – 3,469

Approved



3,673
3,651
3,563
3,536
3,486
3,438
3,418
3,236

Vaccination %



87%
86%
84%
82%
81%
79.5%
79%
75%



Return to Office Plan

Employee Vaccination Incentive Program

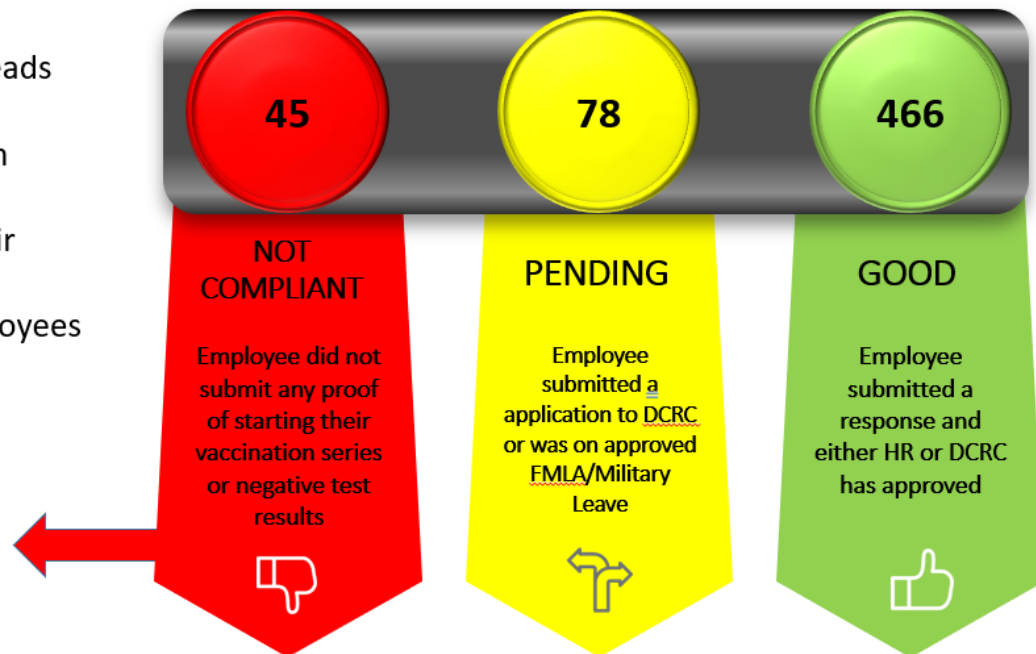
How have we educated the workforce about the policy?

- Distributed policy to Department Heads
- Educated via FulcoNews
- Educational session led by Dr. Paxton
- Created information portal
- Held meeting with managers on their responsibility.
- Emails weekly to unvaccinated employees with policy & link

Suspension Status	# of Employees
1 Day	7
5 Day	8
10 Day	4
Dismissal	26*

* Still working with employees and Department Heads to ensure accuracy

589 Unvaccinated Employees



As of February 12, 2022

Updates on Service Delivery Models

- **Senior Services:**
 - Congregate dining, To Go meals, on-site classes. Virtual programming and wellness checks continue.
- **Library Operations:**
 - These services will continue as currently being delivered
- **Behavioral Health and Developmental Disability Services:**
 - Mental Health Services will continue in person services
 - Developmental Disabilities in person services, transportation, meals
- **Administrative Services:**
 - Encourage the utilization of teleworking when possible
- **Tax Commissioner Offices:**
 - All Locations Open



Recommended Next Steps:

Facilities:

- Return to mask policy strongly encouraging visitors and employees except in tax offices, courts, jail and clinical settings.
- By March 3rd:
 - Update signage
 - Release communications
 - Revise security protocols at entrances

STAY HEALTHY FULTON!



Masks and Social Distancing Encouraged

Continue to monitor community and employee transmission and modify recommendations as needed.



COVID Vaccination and Testing modification

- Unvaccinated employees will no longer be required to test weekly
- Employees and customers will no longer be required to wear mask within County facilities
 - Tax Offices and Courts will maintain separate mask mandates.
 - Sheriff will maintain mask policy at the jail
- New employees will be required to provide proof of vaccination or seek a medical/religious exemption via DCRC
- County's COVID Isolation & Quarantine Protocol will remain in place and updated to match CDC guidance
- Employees who have not provided proof of vaccination or updated vaccination (booster), by health insurance open enrollment deadline, will lose \$250 wellness credit.
- Disciplinary actions for non-compliance will be satisfied by July 1st



QUESTIONS



Fulton County Government

Emergency Rental & Mortgage Assistance Updates

Emergency Rental Assistance

Phase III

PROGRAM UPDATES

REALLOCATION - STATE OF GEORGIA

- Notification from Treasury, approval of additional **\$25MM Voluntary Reallocation of funds**
- 1st \$25MM received
- **Total Reallocation from DCA \$50MM**



Emergency Rental Assistance

Phase III

PROGRAM UPDATES

\$25MM REALLOCATION FUNDING

1085 Households have received assistance

\$8.06MM Reallocation assistance disbursed





QUESTIONS



Emergency Response Reserve & American Rescue Plan Act Funds Update

COVID-19: Recovery Funds Plan

Economic Recovery and
Operational Resiliency Plan

March 2, 2022



Consolidated Covid Response Plan

In Millions \$	2.25.2022	2.25.2022	2.25.2022	Change in Budget	Change in Expenses
	Budget	Commitments	Expenses		
EERF - General Fund	\$ 10.5	\$ 10.5	\$ 10.5	\$ -	\$ -
Communications	1.7	1.7	1.6	-	-
Child Care / Healthcare / Other	0.5	0.5	0.5	-	-
Payment to Employees	6.6	6.6	6.6	-	-
2020 Obligation	1.7	1.7	1.9	-	-
American Rescue Act	221.9	67.2	61.5	0.0	1.0
Health Infrastructure	15.6	-	-	-	-
Pandemic Proof County Facilities	28.0	1.7	0.5	-	-
Day Porters / Cleaning	2.6	2.5	1.1	-	0.0
Child Care	0.7	0.3	0.3	-	(0.0)
Other Emergencies	0.8	0.2	0.1	-	0.0
Premium Pay for Employees	3.4	3.4	3.4	-	-
PPE- County Employees	5.0	3.1	1.9	-	0.0
Court Backlog Project	75.0	8.7	8.1	-	0.7
Information Tech - Virtual Support	8.0	0.8	0.7	-	0.1
Safety Net Services - CSP	8.1	7.0	7.0	-	-
Diversion Center	1.7	-	-	-	-
Employees Covid Healthcare	4.0	-	-	-	-
General Administration	1.0	-	-	-	-
Long Term Revolving Loan Program	3.9	-	-	-	-
Food Insecurity	6.0	1.7	1.2	-	0.1
Job Training	2.0	0.4	0.4	-	-
ERAP 2 & High Need	29.0	28.8	28.4	-	-
ERAP -1 and 2 Additional Operational Costs	8.6	7.1	7.1	-	-
Testing Vaccination	17.4	1.0	0.9	-	0.0
Vaccine Incentive Program	1.2	0.4	0.4	-	-
Consolidated Appropriations Act	18.0	17.8	17.7	-	-
ERAP 1	18.0	17.8	17.7	-	-
ERAP Reallocation	25.0	7.1	7.1	-	1.9
ERAP 4	25.0	7.1	7.1	-	1.9
FEMA Related Expenses	27.4	\$ 27.3	\$ 21.9	0.1	0.1
Total	\$ 302.9	\$ 129.8	\$ 118.6	0.1	3.0
Reserve	\$ 26.3				

Cash Flow Projections – COVID 19 Response

Cash Flow Projection COVID-19 Response

In Millions \$

Uses of Funds		2021	2022	2023	2024	Total
A	EERF - General Fund	10.5	-	-	-	10.5
B	American Rescue Act	51.8	106.2	61.4	2.6	221.9
C	Consolidated Appropriations Act	17.4	0.6	-	-	18.0
D	ERAP Reallocation	-	25.0	-	-	25.0
E	FEMA Related Expenses	21.2	6.1	-	-	27.3
Projected Annual Uses		\$ 100.9	\$ 137.9	\$ 61.4	\$ 2.6	\$ 302.7
Sources of Funds		2021	2022	2023	2024	Total
A	EERF	10.5	16.4			26.9
B	American Rescue Act	128.4	103.4			231.8
C	Consolidated Appropriation Act	18.0				18.0
D	ERAP Reallocation	-	25.0			25.0
E	FEMA Reimbursement at 100% over 3 years	5.9	2.6	5.1	13.7	27.3
Projected Annual Sources		\$ 162.8	\$ 147.4	\$ 5.1	\$ 13.7	\$ 329.0
Cash Balance EOY - 100% FEMA Reimbursement		61.9	71.4	15.1	26.3	26.3
Cash Balance EOY - 50% FEMA Reimbursement		61.3	75.9	19.6	17.1	17.1



QUESTIONS