

Fulton County COVID-19 Response Update

December 1, 2021
BOC Meeting

OVERVIEW

Incident Response Update

- Vaccination Response
- COVID 19 Variant - Omicron

Reopening Update

- Vax or Test Initiative

ERAP Phase II Update

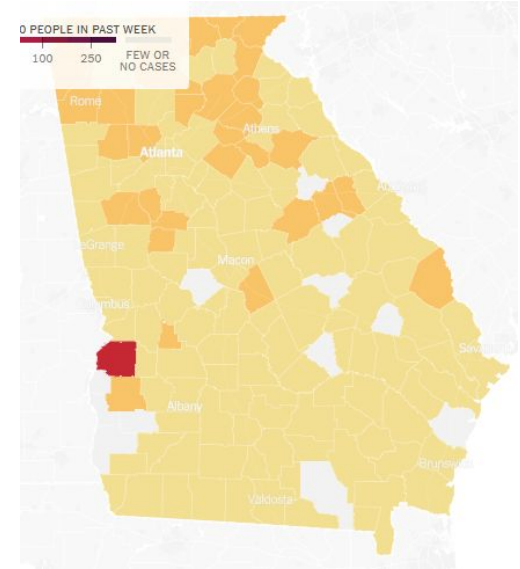
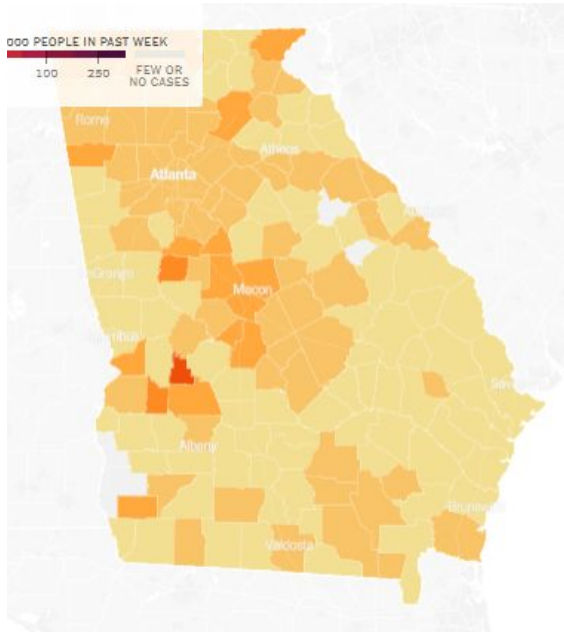
2021 COVID Funding Update

- Update - COVID 19 Reserve & ARPA Spend

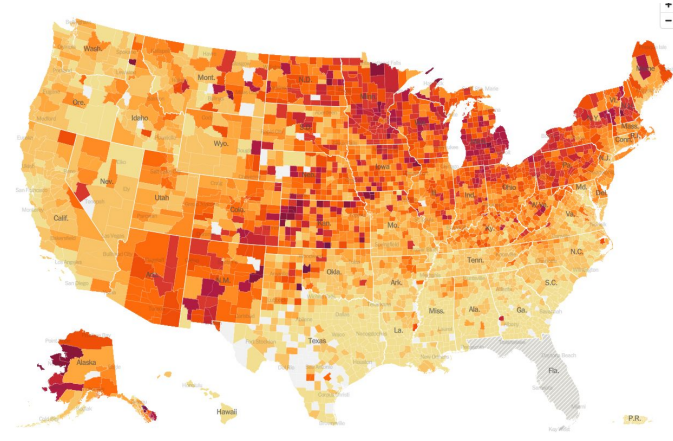
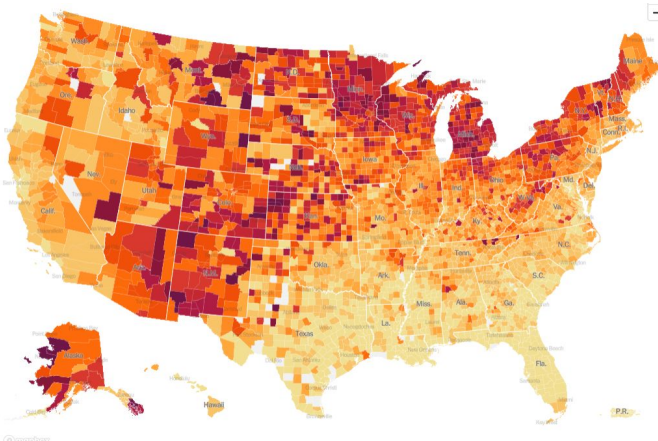
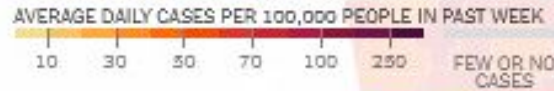
INCIDENT RESPONSE REVIEW

- The 7-day average for cases, hospitalizations, & % positives have all had slight gains since the last BoC.
- The 7 day trend for deaths due to COVID-19 has dropped 330% since the last BoC meeting.
- Current modeling has the Fulton County COVID forecasted metrics to be close to our current levels through February 2022.
- Fulton County hospitals had low patient levels over the holiday. High numbers of Non- COVID procedures are expected to resume this week
- Three of the major indicators on the Fulton County COVID scorecard are green and one is yellow, (cases).

Incident Response Update (Heat Maps) November 15th vs December 1st

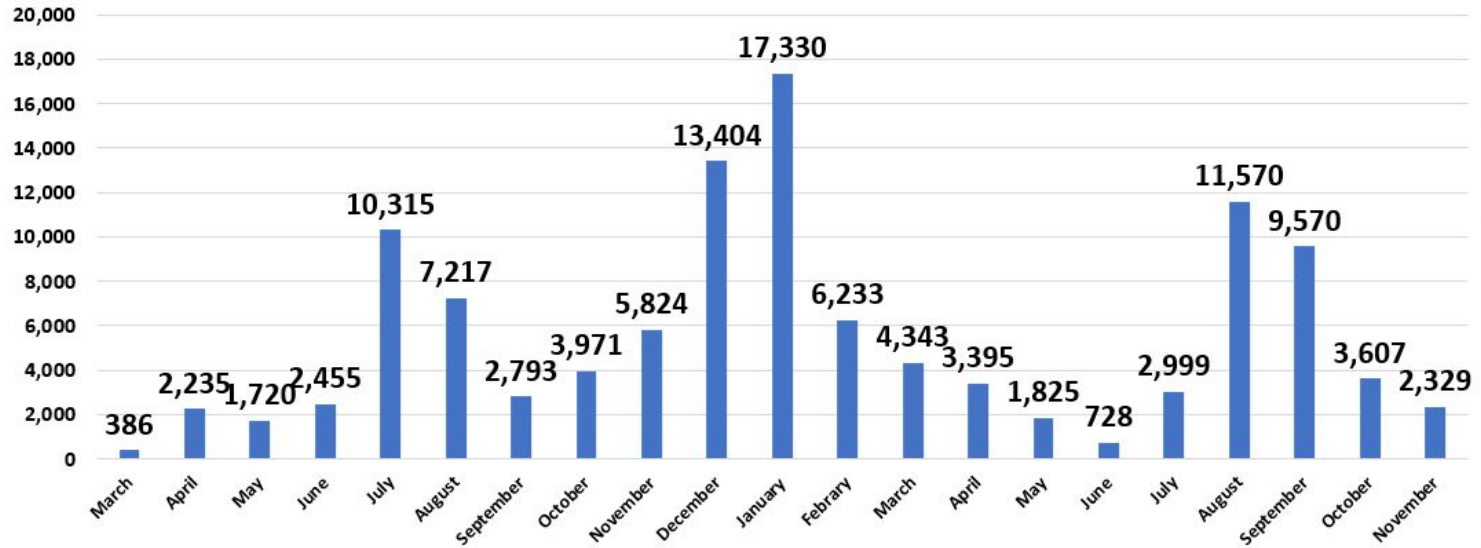


Hot spots

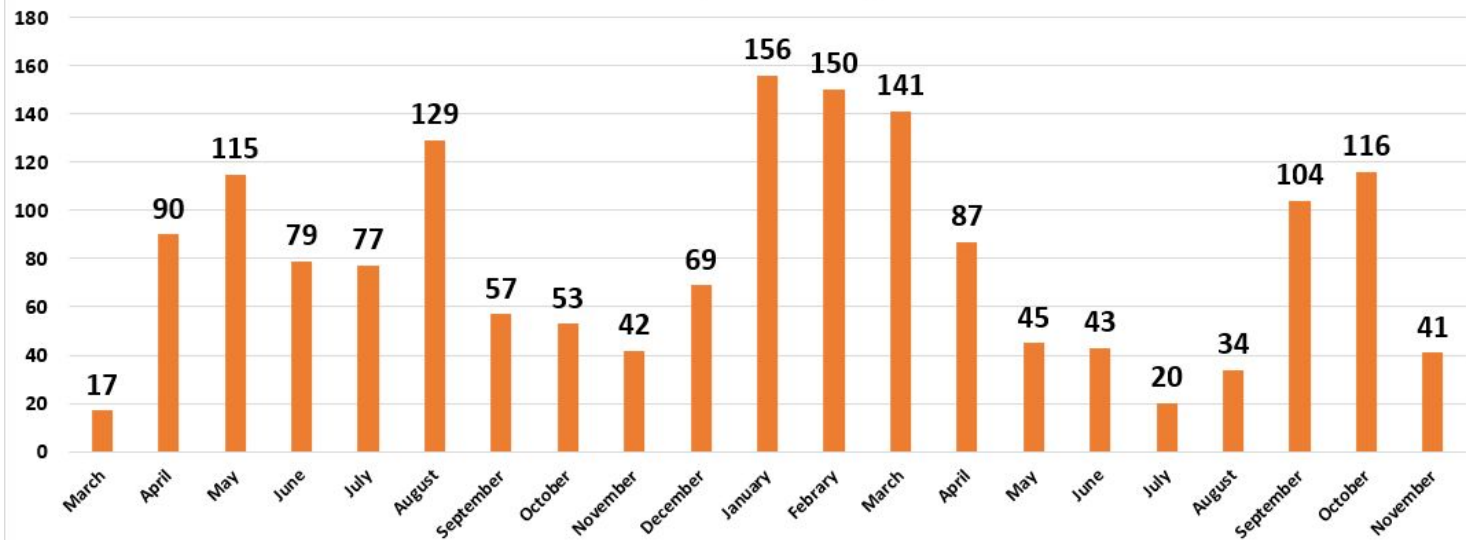


Fulton County Monthly Totals

Fulton County Cases by Month



Fulton County Deaths by Month



Incident Response Update

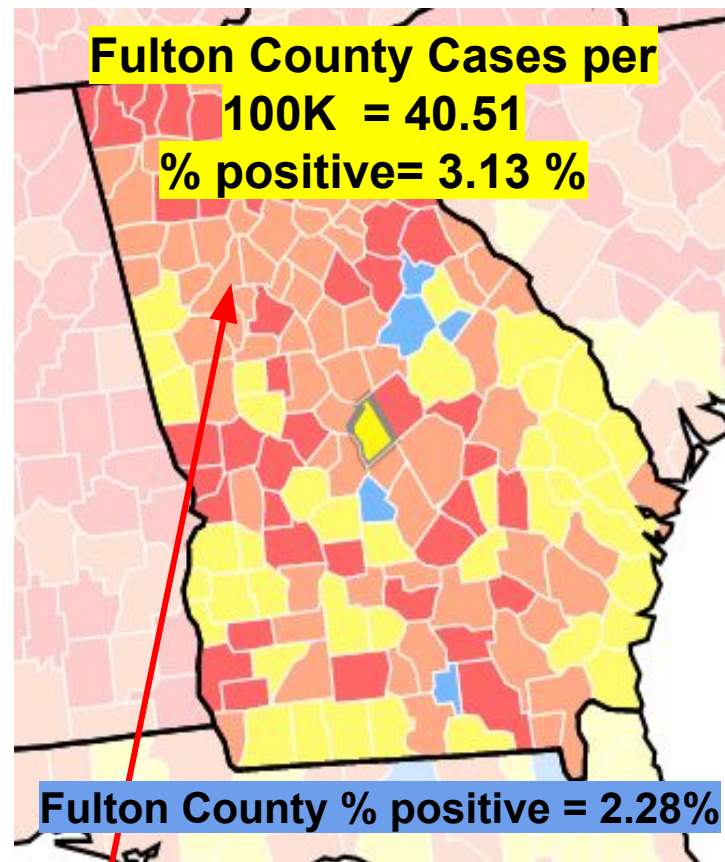
Risk Level

How CDC measures the county level of community transmission...

- CDC looks at two numbers to determine the level of community transmission
 - Total cases
 - Percent Positive

Def of total new cases - A county's rate of new COVID-19 infections reported over the past 7 day period of time per 100,000 residents.

Def of percent positivity - Percentage of positive COVID-19 tests in a county over the past 7 day period of time.



Community Transmission Levels

Total new cases per 100,000 persons in the past 7 days

Percentage of NAATs that are positive during the past 7 days

	Low Transmission	Moderate Transmission	Substantial Transmission	High Transmission
Total new cases per 100,000 persons in the past 7 days	0-9.99	10-49.99	50-99.99	≥100
Percentage of NAATs that are positive during the past 7 days	0-4.99%	5-7.99%	8-9.99%	≥10.0%

Incident Response Update



COVID-19 CASE COUNTS AND RATES BY CITY

	Recent 14-day reporting period ¹	Preceding 14-day reporting period	% Change from preceding 14 days (%) ²	14-Day Incidence Rate ³
	<i>10/13-10/26</i>	<i>9/29-10/12</i>		
Alpharetta	53	66	↓ 19.7%	80.5
Atlanta	510	719	↓ 29.1%	111.2
Chattahoochee Hills	<10	<10	-	101.7
College Park	13	25	↓ 48.0%	100.8
East Point	34	63	↓ 46.0%	88.6
Fairburn	14	29	↓ 51.7%	84.9
Hapeville	18	10	↑ 80.0%	274.7
Johns Creek	57	87	↓ 34.5%	69.1
Milton	40	39	↑ 2.6%	96.9
Mountain Park	0	0	-	0.0
Palmetto	<10	<10	-	76.3
Roswell	78	99	↓ 21.2%	84.0
Sandy Springs	69	108	↓ 36.1%	63.8
South Fulton	115	180	↓ 36.1%	107.0
Union City	34	43	↓ 20.9%	126.7
Unknown	62	19	-	-

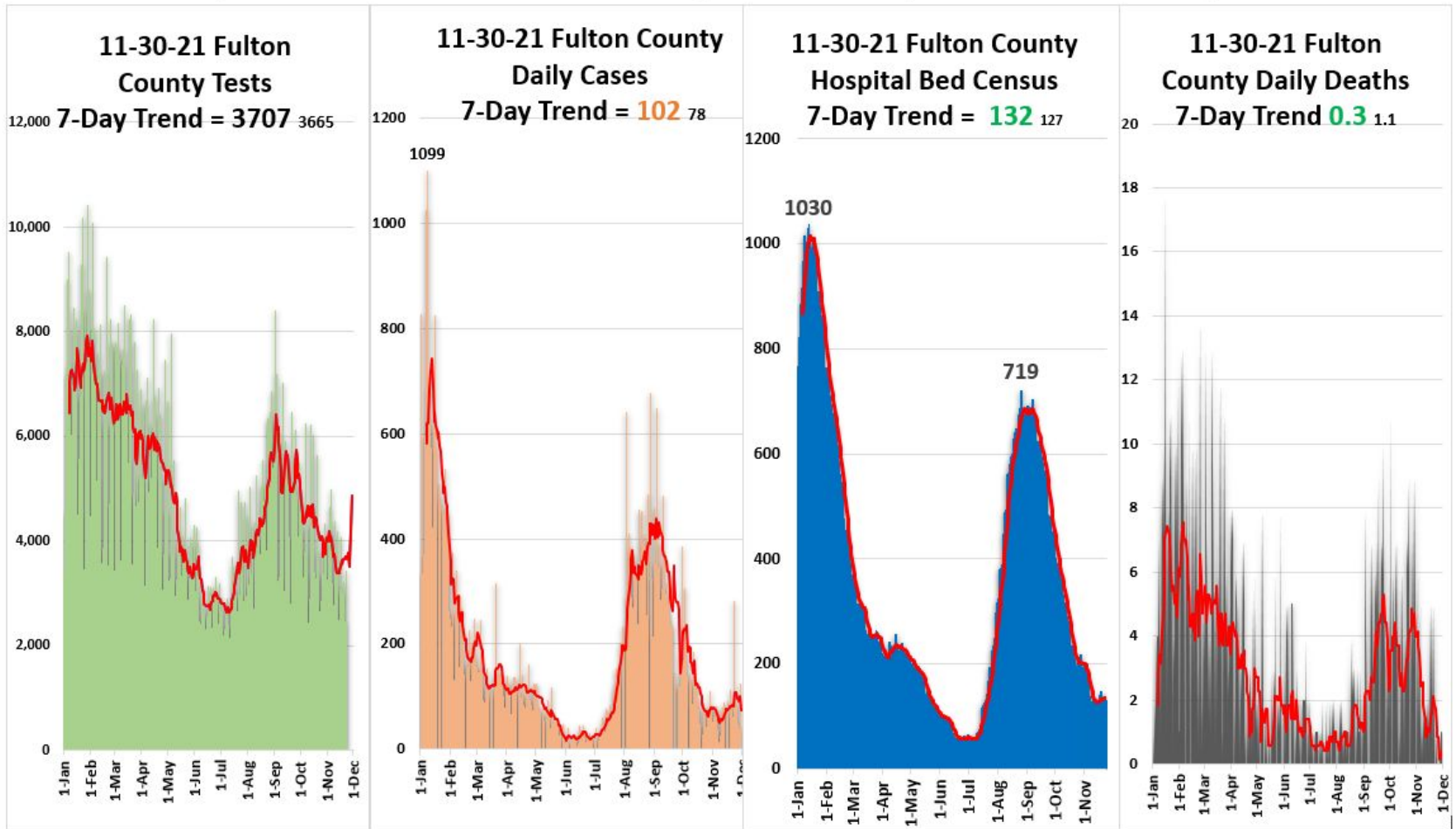
Incident Response Update



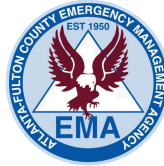
- **Fulton County COVID-19**

- 7-day average for cases is **102**, up 25% since the last BoC mtg.
- 7-day average for % positive is **3.5%**, up 25% since the last BoC mtg.
- 7-day average, Hospitalizations is **132**, up 2% since the last BoC mtg.
- 7 day average, for deaths is **0.3**, down 330% since the last BoC mtg.

Fulton County Dashboard 11-30-2021: New Tests = 3707 / New Cases = **125** / New COVID Census = **135** / New Deaths = 1



Incident Response Update



11/30/21 Fulton County COVID-19 Scorecard

Metric	Status (7-day average) =*	Metric
Testing (Demand & Capacity)	* 3,707 ⬆️	Current capability is 8,000 / day Daily Testing: over 2857 , 1428 -2857 , less than 1428
Testing (Results)	24-48 hrs ⬆️	Time to receive results: 0 - 48 , 49 - 96 , over 96
Cases	* 102 ⁷⁷ ⬆️	Less than 20 , 20 – 74 a day , 75 to 249 , over 250
Fulton positivity rate % +	* 3.5% ^{2.9%} ⬆️	Less than 1% , 1% - 5% , 5% - 10% , over 10%
Hospitalizations COVID census	* 132 ¹²⁷ ⬆️	Less that 50 , 50 – 200 , 201 - 349 , over 350
Hospital Bed Availability	* 19.7% * 17.9% Adult ⬆️	Open Beds: over 20% , 15% - 20% , Less 15%
Hospital CCU Bed Availability	* 20.4% * 19.8% Adult ⬆️	Open CCU Beds: over 20% , 15% - 20% , less 15%
Hospital Vent Availability	* 59.6% ⬆️	Open Vents: over 25% , 15% - 25% , less 15%
COVID Deaths	* 0.3 ^{1.0} ⬇️	Less than .25 , .25 – 2.5 , 2.5 – 5 , over 5
Morgue census	* 93 ⁸⁷ ⬆️	Less Than 75 , 75 – 90 , over 90
COVID Vaccine Administered Booster	530,636 92% 5,561 boosters ⬇️	More than 75% , 50% - 75% , less than 50%

VACCINATION RESPONSE

- **530,600** vaccines administered at Fulton County fixed and mobile sites.
- **Over 40,200** doses of vaccines have been administered via the Fulton County mobile vaccination units
- *****INCENTIVES*****
 - \$100 for any 1st or 2nd vaccine dose, through 12/4
 - Fulton County Residents ONLY
- 4 mobile units will be at 21 locations this week.
- Vaccinations and boosters continue to be available at:
 - Board of Health Clinics,
 - 141 Pryor St,
 - 4700 North Point Parkway,
 - 5710 Stonewall Tell Rd,
 - 3900 Aviation Cir NW
- Boosters now **recommended** for all adults over 18
- Pfizer looking for Approval for booster doses for 16-17 yr old
- Data on Effectiveness on Omicron variant at least 2 wks out

Vaccination Response

GEORGIA

[Download Published Data](#)

VACCINES ADMINISTERED

ADMINISTERED

12,207,489

ADMINISTERED PER 100K

117,336

RESIDENTS VACCINATED

At Least One Dose

6,048,308

% At Least One Dose

58%

Fully Vaccinated

5,313,346

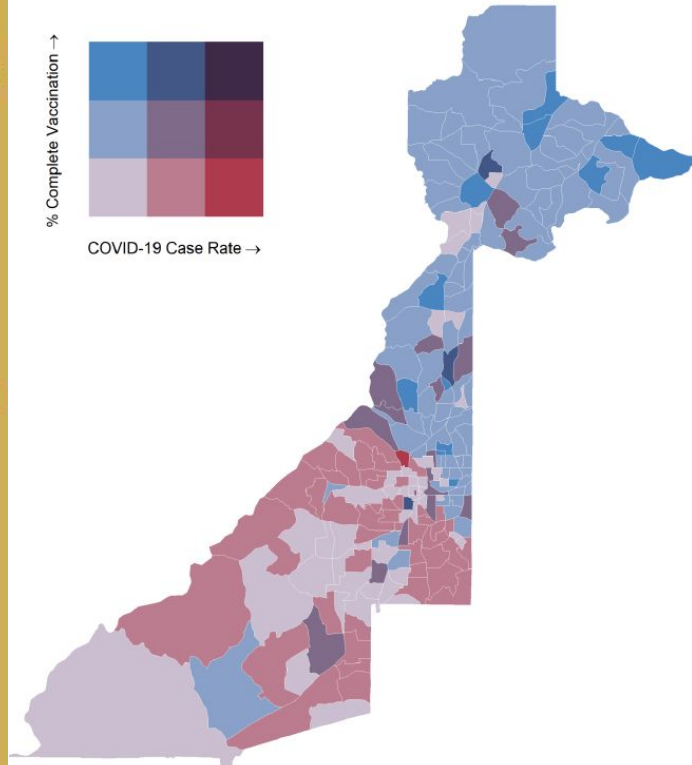
% Fully Vaccinated

51%

% Complete Vaccination →



COVID-19 Case Rate →



- Totals are extracted from the DPH GRITS System
- Totals represent % of total population
- The Fulton County totals for those eligible for vaccination is: 66% one dose & 60% fully vaccinated

Fulton County

[Download Published Data](#)

VACCINES ADMINISTERED

ADMINISTERED

1,331,275

ADMINISTERED PER 100K

128,476

RESIDENTS VACCINATED

At Least One Dose

637,799

% At Least One Dose

62%

Fully Vaccinated

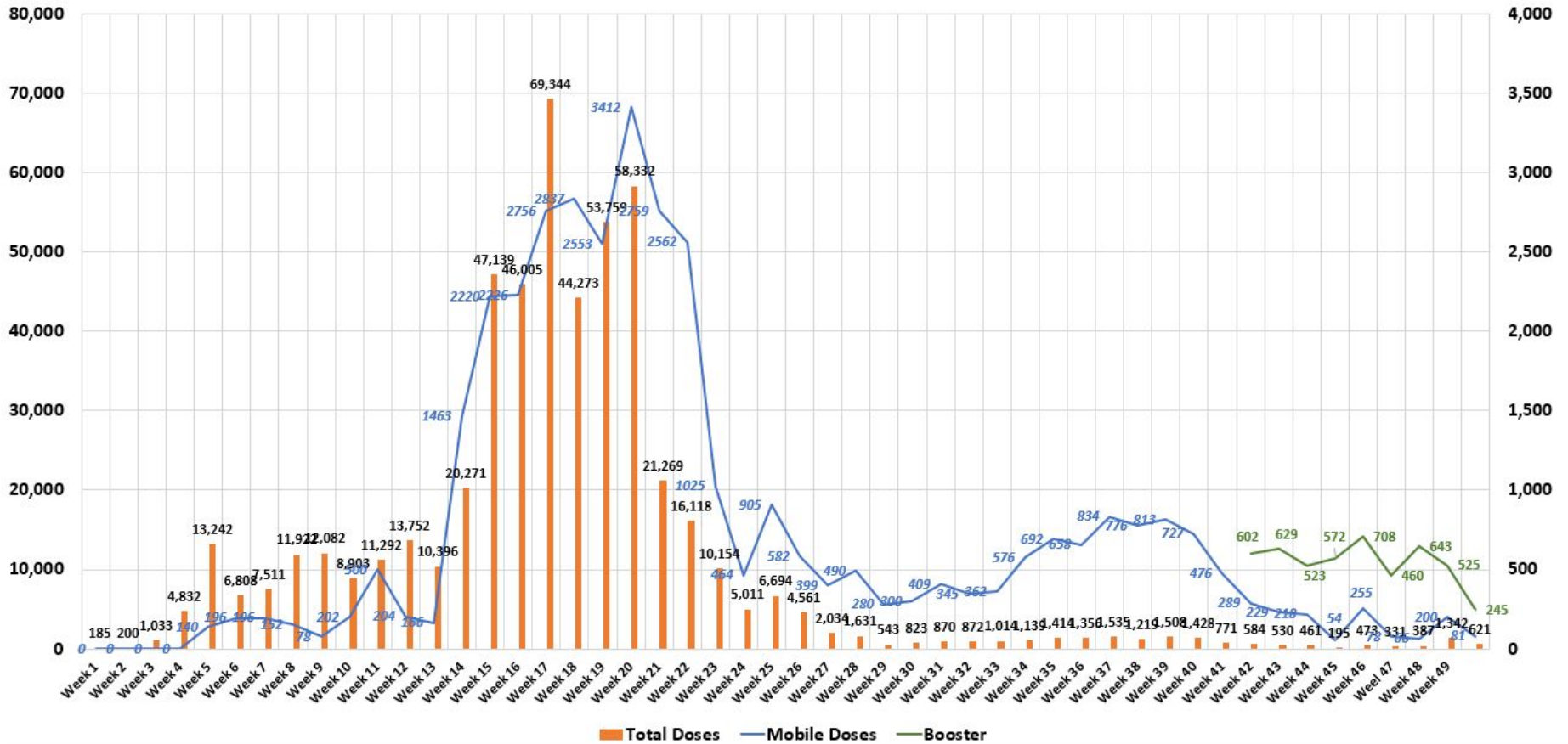
572,002

% Fully Vaccinated

55%

Vaccination Response

Through 11-28-21 Fulton County Vaccine 1st & 2nd dose Weekly Total & Weekly Mobile Total (5 % ratio)



***783 Pfizer 1st doses have delivered to 5-11 year-olds at our fixed locations**

Mobile Vaccine Response Update



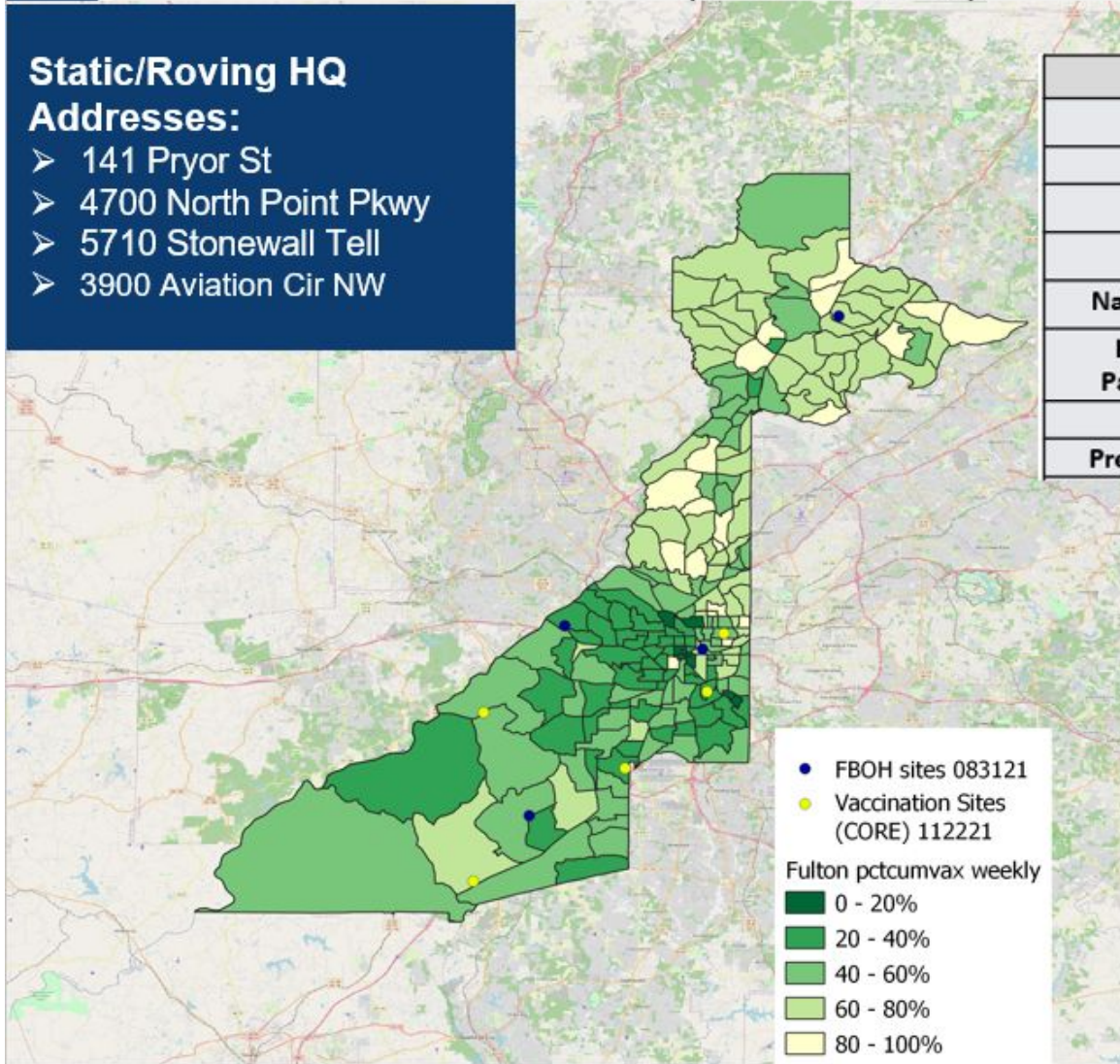
4

Fulton County Map of Mobile Vaccination Sites (6-1 – 11-30)

Static/Roving HQ

Addresses:

- 141 Pryor St
- 4700 North Point Pkwy
- 5710 Stonewall Tell
- 3900 Aviation Cir NW



Race		
	Number	Percentage
Black	8026	64.29%
White	2065	16.54%
Asian	302	2.42%
Native American	49	0.39%
Hawaiian or Pacific Islander	21	0.17%
Hispanic	1700	13.62%
Prefer Not to Say	320	2.56%

Number of vaccines administered = 12,483

Number of events supported = 7

Number of unique sites visited = 7

Vaccination Response

Vaccination Deployment Posture

- **4 Fixed locations (combined capacity up-to 900 Vax per day, as demand dictates):**
 - 141 Pryor St.
 - 4700 North Point Pkwy.
 - 5710 Stonewall Tell Rd.
 - 3900 Aviation Cir
- **4 Mobile Units (combined capacity 300 Vax per day) = up to, 20 events per week**
- **\$100 dollar incentives for 1st & 2nd doses, to be offered at all fixed sites, from November 16 thru December 4th**
- **Extended hours offered**

Path Forward

- **Continue administration of 5-12 year-old**
- **Look to expand incentive opportunities at both fixed locations and mobile units**
- **Micro target our vaccination efforts in census tracts with low vaccination rates**
- **Continue to look for creative ways to battle vaccine hesitancy with targeted advertising**



Vaccination Response

Extended hours again will offered for the next 2 weeks at select locations

To make vaccines more convenient to Fulton County residents, vaccination sites will begin offering evening hours.

In addition to regular hours, (Tuesday through Saturday 9:30 am - 3:30 pm)

each location will host two 5 hour shifts (from 3:30 pm - 8:30 pm)

- **12 / 7 & 14 @ 4700 Northpoint Parkway**
- **12 / 8 & 15 @ Aviation Community Cultural Center - 3900 Aviation Cir NW**
- **12 / 9 & 16 @ South Fulton Service Center - 5710 Stonewall Tell Rd**

Mobile Vaccination: Sites this week

7 Upcoming Sites/Events (11/29 - 12/05)

Nov 29	Nov 30	Dec 01	Dec 02	Dec 03	Dec 04	Dec 05
	Atlanta Airport Marriot	Georgia Department of Community Supervision	Zion Hill Baptist Church	Urban Recipe	City of Fairburn Municipal Court	Impact Church
	Flipper Temple AME	St. Aidan's Episcopal Church	Iberian Pig (Restaurant) Bar Mercado (Restaurant)	Mt. Nebo Baptist Church	SEC Championship Game	
		City of Atlanta (Public Safety Headquarters)	Villages at Carver Apartments	Cooks and Soldiers (Restaurant) New Wine Christian Center	Material in Motion	
	Zion Hill Baptist Church	South Haven Personal Care Home	City of Atlanta (Parks and Rec)	Atlanta Community Food Bank	Ebenezer Baptist Church	Atlanta Falcons Football Game



TARGETED OUTREACH: CLOSING THE VACCINE EQUITY GAP



RACE

43.9% of Black residents have received at least 1 dose, compared to 59.9% of White residents

GEOGRAPHY

6 Census tracts within Fulton County have <20% residents with at least 1 dose.

AGE

59.4% of 20 - 24% year olds have received at least 1 dose, compared to 74.9% of 45 - 54 year olds

OUR APPROACH

ACCESS

- Community-based locations

INCENTIVES

- Gift Cards

EDUCATION

- Alive & In Color Campaign Site
- School-based

TRUSTED VOICES

Municipalities | Elected Officials | School Systems
Nonprofits | Media
Small Businesses | Community Orgs
Faith Partners
Youth Organizations



Questions?



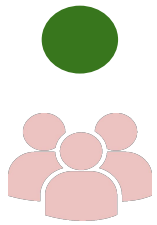


Fulton County Government Reopening Plan

Gating Criteria

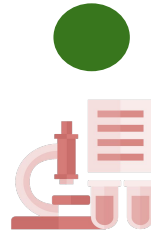
Reopening Indicators

CASES



Downward trajectory in the 7-day average of new positive tests within a 14-day period, and positivity rate below 5%

VAX OR TEST

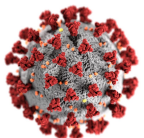


Ability to vaccinate employees to 80% goal and to test employees who choose alternative with results within 48-72 hours

EQUIPMENT



PPE and supplies for all employees interacting with public.



**Satisfy Before Proceeding to Phased Comeback*

COVID POSITIVE EMPLOYEES

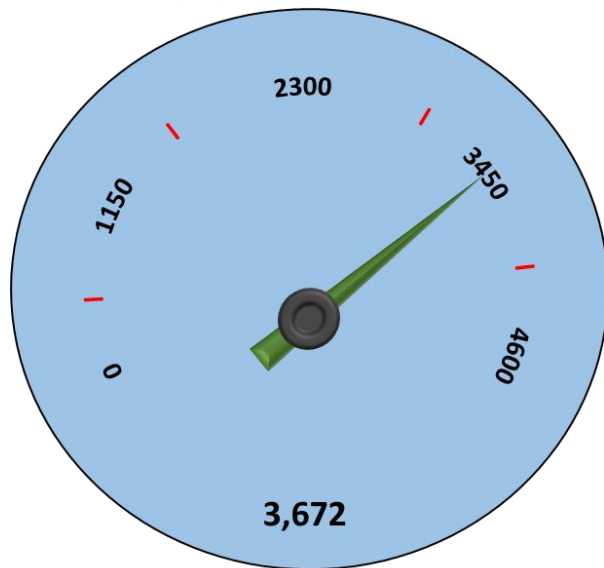
LAST 2 WEEKS	
DEPARTMENT	POSITIVE
PUBLIC DEFENDER OFFICE	1
SUPERIOR COURT-CLERK	1
GRAND TOTAL	2

COVID POSITIVE EMPLOYEES

CUMULATIVE			
DEPARTMENT	POSITIVE	DEPARTMENT	POSITIVE
ARTS/COOPERATIVE EXT	1	MAGISTRATE COURT	3
BHDD	4	MEDICAL EXAMINER	4
BOARD OF HEALTH	28	POLICE	11
BOARD OF COMMISSIONERS	2	PROBATE COURT	6
COUNTY ATTORNEY	3	PUBLIC DEFENDER OFFICE	6
COUNTY MANAGER	5	PUBLIC WORKS	44
COUNTY MARSHAL	13	PURCHASING	3
COMMUNITY DEVELOPMENT	3	REGISTRATION & ELECTIONS	6
DISTRICT ATTORNEY	17	SENIOR SERVICES	9
DREAM	26	SHERIFF	5
EMERGENCY MANAGEMENT	2	SOLICITOR GENERAL	5
EMERGENCY SERVICES	42	STATE COURT-ALL JUDGES	3
EXTERNAL AFFAIRS	2	STATE COURT-GENERAL	7
FINANCE	9	SUPERIOR COURT-ALL JUDGES	4
HUMAN RESOURCES	2	SUPERIOR COURT-CLERK	54
INFORMATION TECHNOLOGY	5	SUPERIOR COURT-GENERAL	31
JUVENILE COURT	22	TAX ASSESSOR	29
LIBRARY	30	TAX COMMISSIONER	38
GRAND TOTAL			484

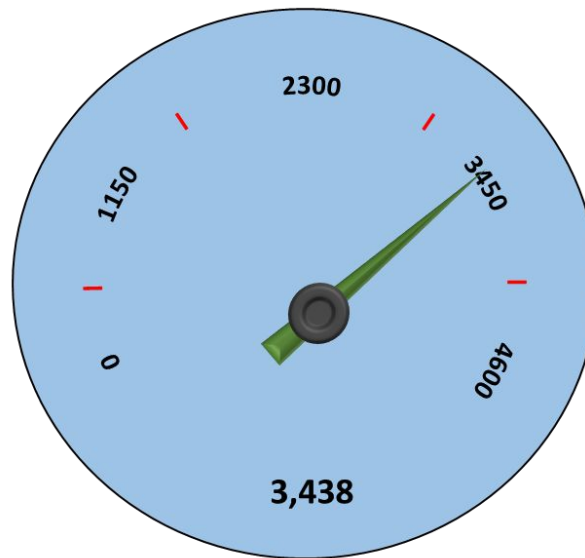
Employee Compliance with Vaccination & Testing Policy

Applications



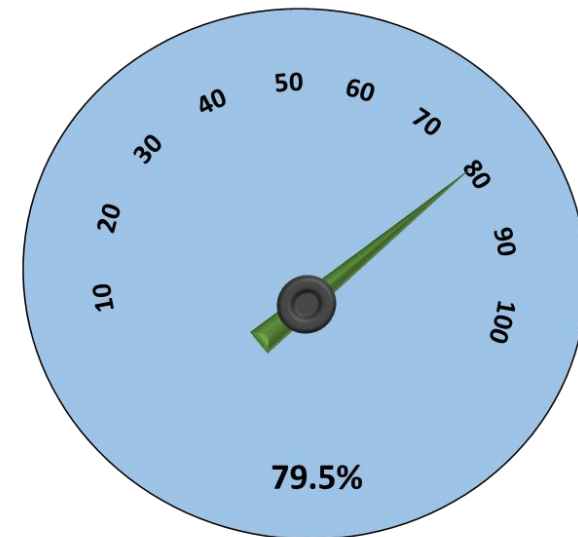
November 15 – 3,643
 November 1 – 3,469
 October 18th – 3,375
 October 4th – 3,208
 September 13th – 2,966
 August 30th – 2,866
 August 18th – 2,788
 August 2nd – 2,709

Approved



3,418
 3,236
 3,045
 2,979
 2,772
 2,624
 2,526
 2,484

Vaccination %



79%
 75%
 72%
 70%
 62%
 59%
 56%
 55%

Return to Office Plan

Employee Vaccination Incentive Program

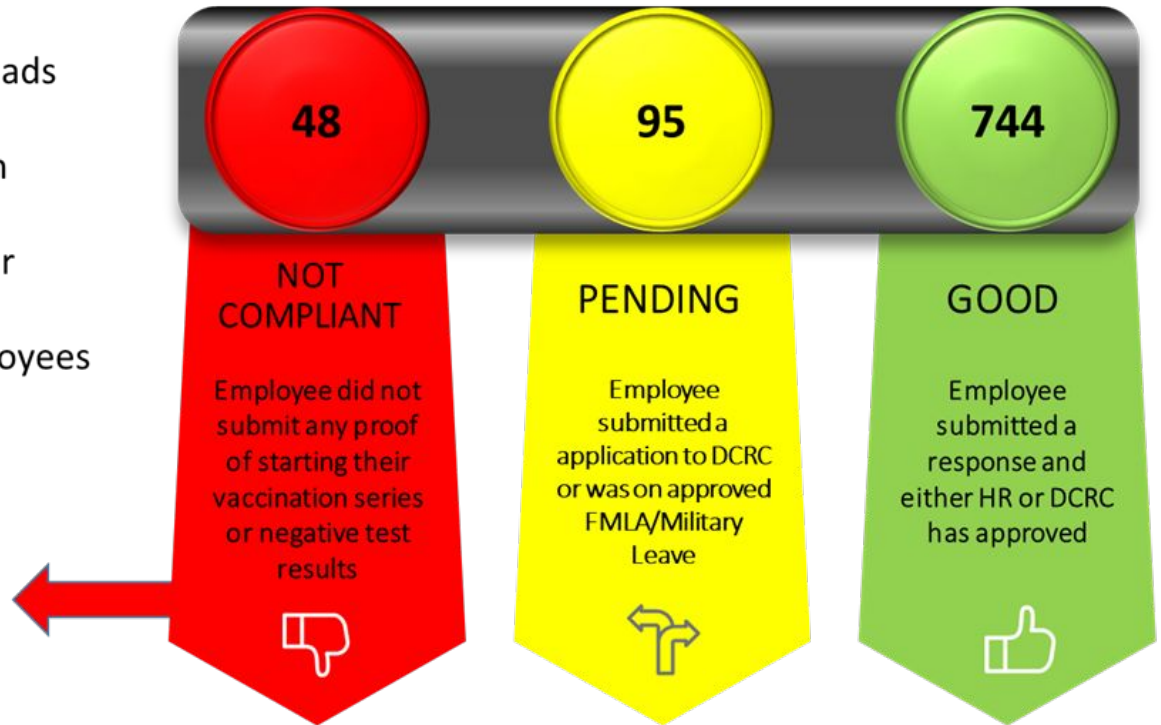
How have we educated the workforce about the policy?

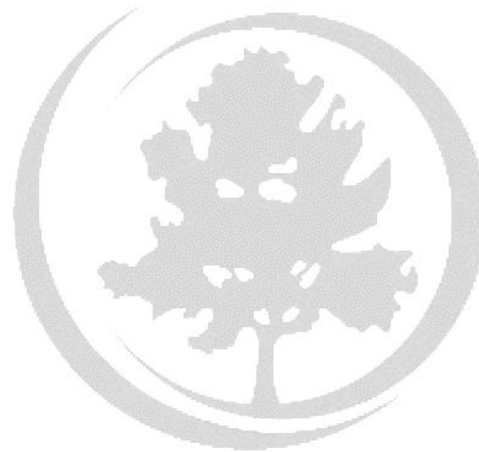
- Distributed policy to Department Heads
- Educated via FulcoNews
- Educational session led by Dr. Paxton
- Created information portal
- Held meeting with managers on their responsibility.
- Emails weekly to unvaccinated employees with policy & link

Suspension Status	# of Employees
1 Day	25
5 Day	1
10 Day	8
Dismissal	14*

* Still working with employees and Department Heads to ensure accuracy

887 Unvaccinated Employees





Fulton County Government

Emergency Rental & Mortgage
Assistance Updates

Emergency Rental Assistance

Phase II

PHASE II - QUICK STATS

21,707 Applications initiated

11,777 Applications submitted

9,823 Applications adjudicated

Emergency Rental Assistance

Phase II

PROGRAM UPDATES

REALLOCATION - STATE OF GEORGIA

- Fulton **FULLY EXPENDED** the direct assistance amounts received from Treasury for ERA I and ERA II
- DCA submitted a Treasury request to allow “**Voluntary Reallocation**” of \$25M of the State’s ERA I funds to Fulton

RECOMMENDED NEXT STEPS

FUNDING
EXPENDED

BRIDGE
WITH ARPA

TREASURY
APPROVAL

SET AWARD
UP AS
GRANT

Mortgage Assistance

Georgia Administered - \$354M Statewide

MORTGAGE ASSISTANCE UPDATES

- There are no updates on Mortgage Assistance.
- Georgia's spend proposal has not yet been approved by Treasury.



QUESTIONS



Emergency Response Reserve & American Rescue Plan Act Funds Update

COVID-19: Recovery Funds Plan

Economic Recovery and
Operational Resiliency Plan

November 24, 2021



Consolidated Covid Response Plan

In Millions \$	11.12.2021	Budget		11.24.2021
	Operational Plan 100% FEMA Reim b	Plan Changes	Operational Plan -100% FEMA Reim b	
EERF - General Fund	\$ 14.9	-	\$ 14.9	
Communications	2.0	-	2.0	
Child Care / Healthcare / Other	1.3	-	1.3	
Payment to Employees	6.6	-	6.6	
Information Tech - Virtual Support	2.0	-	2.0	
2020 Obligation	3.0	-	3.0	
American Rescue Act	216.9	-	216.9	
Health Infrastructure	17.3	-	17.3	
Pandemic Proof County Facilities	28.0	-	28.0	
Day Porters / Cleaning	4.1	-	4.1	
Child Care / Healthcare / Other	1.5	-	1.5	
Premium Pay for Employees	3.4	-	3.4	
PPE- County Employees	5.0	-	5.0	
Court Backlog Project	75.0	-	75.0	
Information Tech - Virtual Support	8.0	-	8.0	
Safety Net Services - CSP	8.0	-	8.0	
Long Term Revolving Loan Program	5.2	-	5.2	
Food Insecurity	6.1	-	6.1	
Job Training	2.7	-	2.7	
ERAP 2 & High Need	25.0	-	25.0	
ERAP -1 and 2 Additional Operational Costs	8.6	-	8.6	
Testing Vaccination	17.4	-	17.4	
Vaccine Incentive Program	1.7	-	1.7	
Consolidated Appropriations Act	18.0	-	18.0	
ERAP 1	18.0	-	18.0	
FEMA Related Expenses	\$ 32.8	-	\$ 32.8	
Projected Annual Uses		-		
Reserve	\$ 31.3	-	\$ 31.3	

YTD Expenses	Expenses		YTD Expenses
	11.12.2021	Expense Changes	
\$ 10.5	\$ 0.0		\$ 10.5
1.6	-		1.6
0.5	-		0.5
6.6	-		6.6
-	-		-
1.8	0.0		1.9
41.9	4.7		46.6
-	-		-
0.4	-		0.4
0.7	0.0		0.7
0.3	0.0		0.4
3.4	-		3.4
1.7	-		1.7
2.7	0.1		2.9
0.4	0.1		0.5
6.9	0.1		7.0
-	-		-
0.2	0.1		0.3
-	0.3		0.3
18.8	3.3		22.1
6.0	0.6		6.6
0.4	0.0		0.4
0.0	-		0.0
17.3	0.0		17.3
17.3	0.0		17.3
20.0	0.1		20.0
\$ 89.7	4.8		\$ 94.5

Cash Flow Projections – COVID 19 Response

Uses of Funds		2021	2022	2023	2024	Total
A	EERF - General Fund	14.9	-	-	-	14.9
B	American Rescue Act	86.3	76.5	51.5	2.6	216.9
C	Consolidated Appropriations Act	18.0	-	-	-	18.0
D	FEMA Related Expenses	32.8	-	-	-	32.8
Projected Annual Uses		\$ 152.1	\$ 76.5	\$ 51.5	\$ 2.6	\$ 282.6
Sources of Funds		2021	2022	2023	2024	Total
A	EERF	14.9	16.4			31.3
B	American Rescue Act	128.4	103.4			231.8
C	Consolidated Appropriation Act	18.0				18.0
D	FEMA Reimbursement at 100% over 2 years	6.9	25.9			32.8
Projected Annual Sources		\$ 168.2	\$ 145.7	\$ -	\$ -	\$ 313.9
Cash Balance EOY - 100% FEMA Reimbursement		16.1	85.3	33.9	31.3	31.3
Cash Balance EOY - 50% FEMA Reimbursement		12.7	68.9	17.5	14.9	14.9

Emergency Rental Assistance

ERAP -1

Funded - Consolidated Appropriations Act

Received - Mid/January 2021

in Millions \$

Regular

Allocation	Received by FC	YTD Expense
\$18.0	\$18.0	\$17.3

Expense does not include outstanding POs

ERAP -2

Funded - American Rescue Plan Act

Received - Mid/May and Mid/October 2021

in Millions \$

Regular and High Need

Allocation	Received by FC	YTD Expense
\$24.9	\$24.9	\$22.1

ARPA - Admin. Supplement

County Allocation of ARPA
funding for Administration

\$8.6	\$8.6	\$6.6
-------	-------	-------

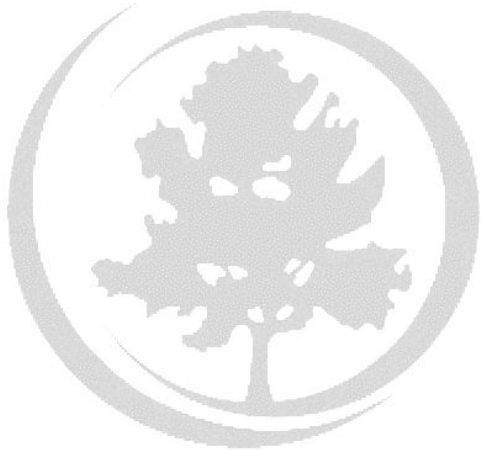
Total

\$51.5

\$51.5

\$46.0





QUESTIONS