

Facts At A Glance

Grady Medication Assisted– Outpatient Treatment (MAOT) Program



Fulton County Department of
Behavioral Health
& Developmental Disabilities (BHDD)
141 Pryor Street
Atlanta, GA 30303
404.613.7013



OVERVIEW

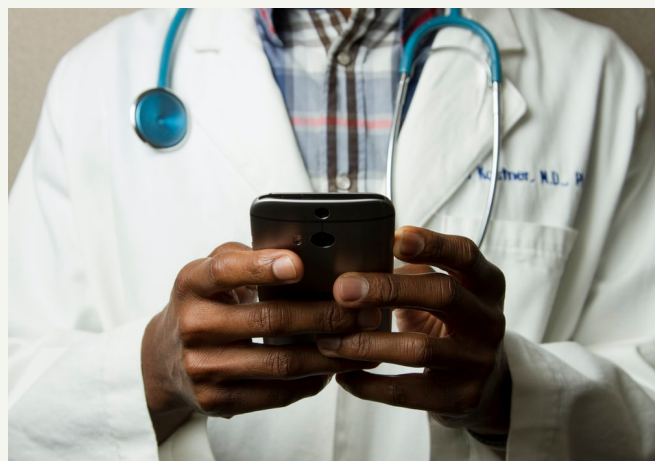
To assist in combatting the Opioid epidemic, the Department of BHDD partnered with the Grady Medication-Assisted Outpatient Treatment (MAOT) program for residents seeking services for Opioid Use Disorders. Medication-Assisted Outpatient Treatment is provided through the use of medications in combination with counseling & behavioral therapies to treat substance use disorders. Through MAOT, Fulton County residents have access to intensive outpatient services utilizing buprenorphine and naloxone (Suboxone®) medication to treat Opioid-Use Disorders, which is life-saving by sustaining recovery compared to traditional abstinence based alternatives. Grady's partnership with Emory & Morehouse Schools of Medicine has strengthened their ability to provide a unique staffing blend, including toxicologists & addictionologists, to serve the needs of residents.



SNAPSHOT: 2019

Grady Medication-Assisted Outpatient Treatment Program Fulton County Year-End Report-2019

- Verbal Intervention Only (Within Hospital) = 11 served
- Induction dose of buprenorphine while in the hospital = 46 served
- New patients seen at 10 Park Place (may include walk-ins or follow-up from the hospital) = 82 served
- TOTAL SERVED = 139
- Number that received hospital intervention and followed up at 10 Park Place (included in total of line #5) = 5 served



SNAPSHOT: 2020

Grady Medication-Assisted Outpatient Treatment Program Fulton County Year-end Report-2020

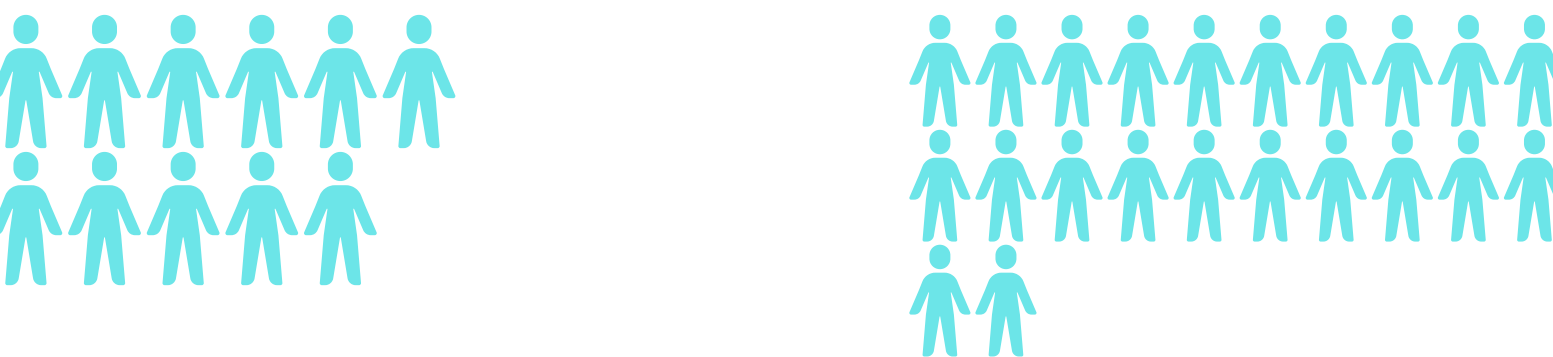
- Verbal Intervention Only (Within Hospital) = 11 served
- Induction dose of buprenorphine while in the hospital = 13 served
- New patients seen at 10 Park Place (May include walk-ins or follow-ups from the hospital) = 39 served
- TOTAL SERVED = 74
- Number that received hospital intervention & followed up at 10 Park Place (Included in total of line #5) = 7 served

SNAPSHOT

Verbal Intervention Only (*Within Hospital*)

2019

2020



Induction dose of buprenorphine while in the hospital

2019

2020



New patients seen at 10 Park Place (May include walk-ins or follow-up from hospital)

2019

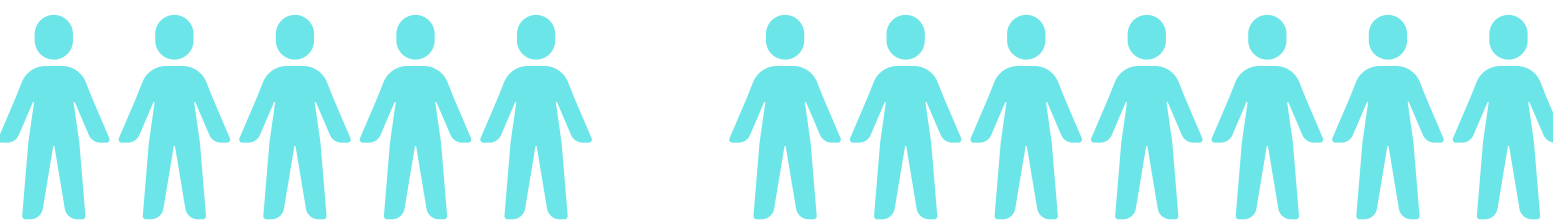
2020



Number that received hospital intervention & followed up at 10 Park Place

2019

2020



Grady Medication-Assisted Outpatient Treatment (MAOT) Program
Behavioral Health Outpatient Center
10 Park Place, NE
Atlanta, Georgia 30303

139

Fulton County residents served in 2019

74

Fulton County residents served in 2020

213

Total Fulton County residents served in 2019 & 2020