

## **Attachment #1**

### **Value Engineering Item #1**

#### **New 4160V Electrical Switchgear Revisions**

## VE Scope

**Prepared By:**

Corrie Bukle  
Key Account Manager  
corrie.bukle@se.com

**Proposal Name:** Camp Creek WWTP

**Quote Name:** Excel Takeoff MV gear only

---

**Proposal Number:** P-200220-1436685

**Quote Number:** Q-2562127

**Through Addenda Number:** 4

**Sales Representative:** Corrie Bukle

### **Conditions of Sale**

*Except as otherwise provided below, this Quotation is subject to Coordinated Project Terms. See <https://www.schneider-electric.us/en/download/document/0100PL0043>*

Notwithstanding any provision to the contrary in the referenced Coordinated Project Terms or any other documentation provided in connection with this proposal, this quote is valid for 30 days. Quoted lead times are approximate and subject to change.

Schneider Electric reserves the right to amend, withdraw or otherwise alter this submission without penalty or charge as a result of any event beyond its control arising from or due to the current Covid-19 epidemic or events subsequent to this epidemic / pandemic including changes in laws, regulations, by laws or direction from a competent authority.

### **Clarifications**

1. Coordination Studies by others.
2. Startup is included for the metalclad switchgear lineup.
3. Standard Terms and Conditions apply.
4. Spare relay included.
5. Add to existing not included.
6. Witness testing for Metal Clad gear only.

### **Digital Power:**

#### **SCOPE:**

Digital Power (DP) is providing local and remote HMI panel and protection relay configuration and startup services per Camp Creek WRF UV Replacement specification 4 page 374 [no indicated date] and 60% design drawing package dated 1/15/2021.

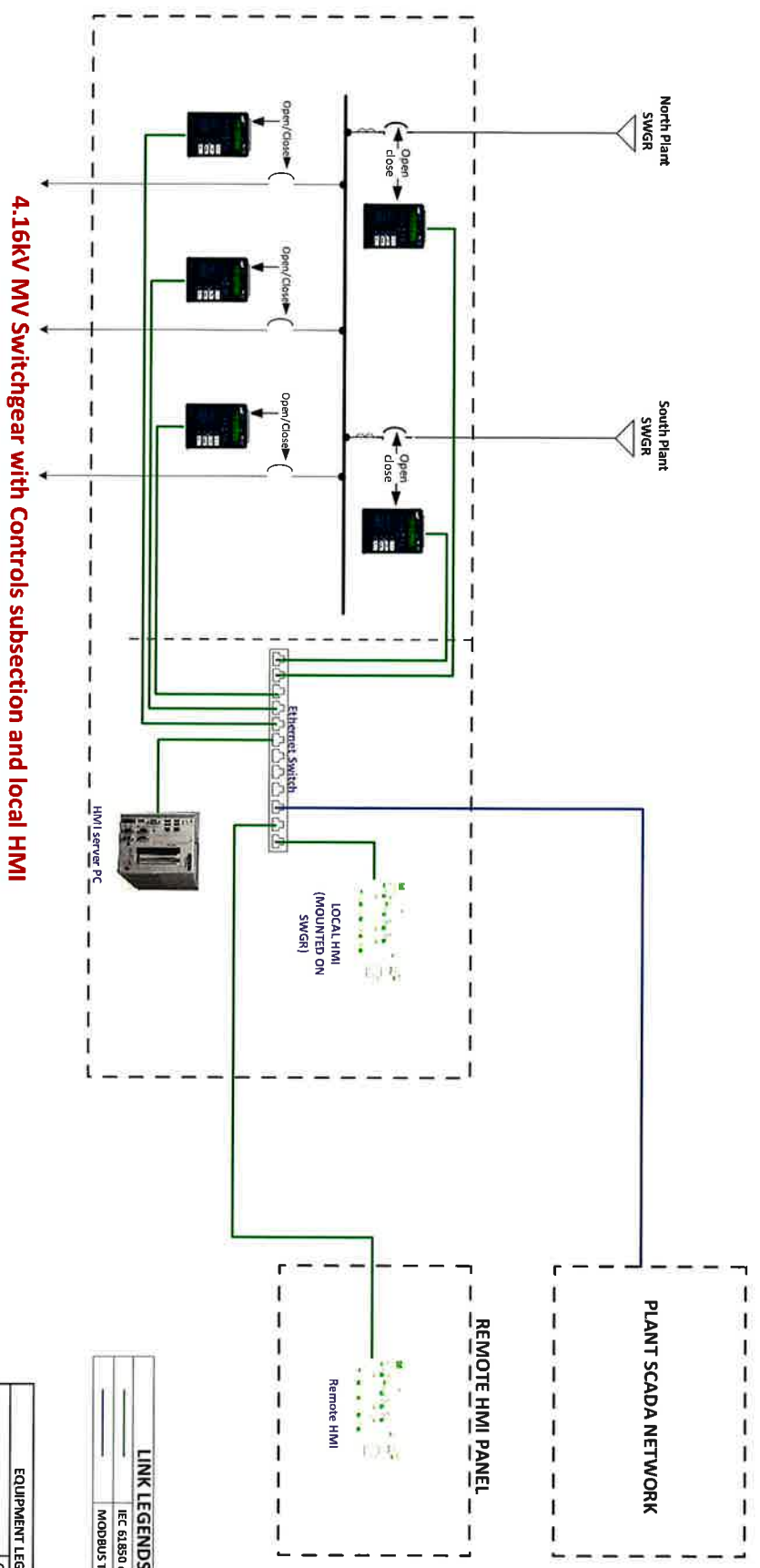
#### **CLARIFICATIONS:**

**Local and Remote HMI (Refer Figure 1):**

- A total of 5 breakers part of the 4.16kV MV gear are assumed to be monitored and controlled from the HMI.
- The breakers will be monitored and controlled via the SEL 751 relay connected to each breaker. No other meter or device other than the 5 SEL relays will be interfaced with the HMI
- Communication between the SEL relays and the HMI is assumed to be over IEC 61850
- An HMI screen is expected to be door mounted on the controls subsection of the 4.16kV MV gear. This shall be the local HMI
- A total of 2 screen views will be made available on the HMI- one view showing the overall one line of the 4.16 kV system and another view showing the communications status of the 5 SEL 751 relays
- Only manual open/close operation of the breakers is considered here. No automation logic or sequence of operation will be built inside the HMI
- The remote HMI panel will be a NEMA 12 wall mountable enclosure
- The remote HMI shall have the same views as the local HMI
- No seismic certification or specific UL certification considered for the remote HMI panel
- Installation of the remote HMI panel is considered to be done by others
- Communication cabling between the local Hmi in the 4.16 kV gear and the remote HMI panel is assumed to be done by others
- All the breaker statuses will be made available to the plant SCADA over MODBUS TCP
- On site start-up included
- One day of post-startup basic operational training included
- An 18.5" touchscreen HMI is considered instead of 24" as required in the spec

**Protection Relay Services**

- Protection settings to be programmed into the relays shall be provide by others
- SWGR drawings to be done by others
- All relays assumed to be equipped with IEC 61850 option
- Communication of the relays to the HMI is assumed to be over IEC 61850



LINK LEGENDS	
	IEC 61850 over CAT5
	MODBUS TCP over CAT5

EQUIPMENT LEGEND	
	Connextium switch
	Advantech UNO3285
	Schneider magellis HMI
	SEL 751

Figure 1 System Architecture

## **SCOPE OF WORK COMMENTS:**

### General Scope Comments:

Items designated as "provided by others" are not included in this quote.

Items not listed on the bill of material are assumed to be provided by others.

Physical installation and wiring between supplied equipment is provided by others.

It is assumed that the Ethernet network is supplied by others. This quotation does not include any network components other than what is on the bill of material.

Quote assumes services will take place during daytime hours, Mon-Fri, roughly 7 AM CST to 4 PM local time.

### Proposal/Order information Comments:

Schneider Electric will provide pre-startup documentation to customer which needs to be completed before startup can be scheduled.

Standard Schneider Electric Terms and Conditions apply.

It is the purchaser's obligation to review the proposal/quotation carefully and to immediately advise Schneider Electric of any differing interpretations the purchaser has so that any necessary changes can be made prior to purchase.

Important notice: Please check the following link for additional Terms and Conditions =>

[https://download.schneider-electric.com/files?&p\\_Doc\\_Ref=0100PL1901](https://download.schneider-electric.com/files?&p_Doc_Ref=0100PL1901)

## **26 13 19 MV Vacuum Interrupter SWGR**

**5.02E – The gear provided is Arc Resistant**

**5.11B – SEL751 relays are not drawout**

**5.12A,5 – Ground and test device is only furnished with mains having feeder circuits. There are none in this configuration and we did not provide.**

## **26 18 39 MV Motor Starters**

**2.02C – Schneider Electric contactor is 250,000**

**2.03D – 200A provided because the max CT ration is 200:5**

**2.10A – We do not offer N12, only N1 gasketed.**

Seq #	Qty	Product Description
1	1	<p><b>Designation :</b> SECTION 26 13 19</p> <p><b>Product Details:</b></p> <p>1 - MetalClad Switchgear-Metal Clad Switchgear</p> <hr/> <p>METAL CLAD Switchgear Assembly Consisting of the following: 4 Section Line-up</p> <p>Door Mounted Ethernet Port 1 - Com'X 510 Communication Gateway / Energy Server 1 Set of Certified Test Reports included with Final Drawings IBC/ASCE7 Seismic Qualification Indoor (Type 1) Label Requirements: UL With Front and Rear Access Required AC Panel - Branch Breakers per Plans and Spec</p> <p>If Customer Witness Testing Required, must add in separately from this Bill of Material and price in at Standard Square D daily rate.</p> <p>Equipment Ratings</p> <hr/> <p>Nominal System Voltage: 4.16kV, 3 Phase, 3 Wire, Ungrounded Delta Maximum Bus Continuous Current: 1200A Maximum Short Circuit Current: 40kA (RMS Symmetrical) Maximum Voltage: 4.76KV One-Minute Withstand Voltage: 19kv RMS Impulse Withstand Voltage (BIL): 60kV Frequency: 60 Hertz</p> <p>Lineup Options</p> <hr/> <p>1 - CPT Transfer - 2 CPTs 1 - Test Cabinet, 8 ft. cable 1 - Test Jumper, 14 ft. cable only Breaker Lift Truck Cable Support/Clamp for each breaker Control wiring terminations: 9080G R6 Compression Type Electric racking motor accessory w/ 50 ft. cord, requires 120Vac or optional CPT &amp; recepticle Manual Ground and Test, 5/15kV, 1200/2000A w/o Remote Control</p> <p>Structure Information</p> <hr/> <p>1200A Silver Plated Copper Main Bus Bus Bracing: 50kA (RMS Symmetrical) Bus Supports: Glass Polyester Glass Polyester Pass-Through Inserts in Glass Polyester Bus Barrier (between sections)(Std) Ground Bus: Silver Plated Copper Aluminum Compression Lugs - AL/CU Cables 1 - Strip Heaters (Internal Power Source) w/ Thermostat (per section) 2 Infrared Viewing Windows per Cubicle Cable Compartment Ammeter and Circuit Breaker for Strip Heater Circuit Breaker Close Control Power: Customer Supplied 125VDC Breaker Trip Control Power: Customer Supplied 125VDC</p>

Exterior Paint Color: ANSI #61, Light Gray  
(Std)  
Indication Lights - LED Type lamps  
Rear Access, Bolted Panel  
White Interior LV Panels

Dimensions:  
Width of Lineup: 122.75" - 3117.85mm  
Height @ Highest Point: 95.10" 2416 mm  
Depth @ Base: 92.00" 2337 mm

Special Features or TAG Items (per line-up)

-----  
If Special Features are included in this  
Bill of Material, they will NOT appear on the  
Front-Elev or One-line Drawing and may alter  
the final layout and dimensions.

Detailed Bill of Material

-----  
This Metal Clad Switchgear shall be  
depicted in the attached drawing and shall  
include the following:

Section 1 - 14.75W, Full-height section, -  
Managed Ethernet Switch  
4 - Ethernet Cat5E cabling  
Transition Section to Motorpact - MVMcc

Section 2 - 36W, -  
2 - Ethernet Cat5E cabling  
1 - Set Cable Termination Boots - Incoming  
Power Connection

Section 2 - 36W, Upper - Auxiliary  
1 - VT Drawer with (2) VTs, (2) Primary Fuses  
per VT  
1 - 15kVA, Single Phase CPT

Section 2 - 36W, Lower - Breaker\_1200A,  
- Main A -  
Catalog Number: V5D3133Y000  
1 - TOC Switch Supplying 10 Additional  
Contacts (5a, 5b)  
1 - 4.76kV Max. Voltage, 250MVA / 40KA,  
1200A, Vacuum Breaker Type: VR-05025-12  
1 - Key Interlock (per key) Manufacturer :  
Kirk  
1 - Breaker Control Switch 1t, 1c  
1 - MOC Switch Supplying 10 Additional  
Contacts (5a, 5b)  
2 - Test Blk/Sw for Ctrl Schematic  
1 - Local/Remote Switch  
1 - Schweitzer Relay SEL 751  
1 - Quantity 3 Al Comp Lug for Al/Cu Cable  
Size 600 kcmil  
3 - Single Ratio 1200A:5A CT - Standard  
Accuracy - Model 780 - Set#1

Section 3 - 36W, -  
Managed Ethernet Switch

Section 3 - 36W, Upper - CPTTransfer

Section 3 - 36W, Lower - Blank

Section 4 - 36W, -  
 2 - Ethernet Cat5E cabling  
 1 - Set Cable Termination Boots - Incoming  
 Power Connection

Section 4 - 36W, Upper - Auxiliary  
 1 - VT Drawer with (2) VTs, (2) Primary Fuses  
 per VT  
 1 - 15kVA, Single Phase CPT

Section 4 - 36W, Lower - Breaker\_1200A,  
 - Main A -  
 Catalog Number: V5D3133Y000  
 1 - TOC Switch Supplying 10 Additional  
 Contacts (5a, 5b)  
 1 - 4.76kV Max. Voltage, 250MVA / 40KA,  
 1200A, Vacuum Breaker Type: VR-05025-12  
 1 - Key Interlock (per key) Manufacturer :  
 Kirk  
 1 - Breaker Control Switch 1t, 1c  
 1 - MOC Switch Supplying 10 Additional  
 Contacts (5a, 5b)  
 2 - Test Blk/Sw for Ctrl Schematic  
 1 - Local/Remote Switch  
 1 - Schweitzer Relay SEL 751  
 1 - Quantity 3 Al Comp Lug for Al/Cu Cable  
 Size 600 kcmil  
 3 - Single Ratio 1200A:5A CT - Standard  
 Accuracy - Model 780 - Set#1

**Estimated days to ship, excluding transit:** The estimated shipping days cannot be determined at this time, please contact your field office representative for more information.

Seq #	Qty	Product Description
2	1	<b>Designation :</b> 125VDCBATTERY SYSTEM <b>Product Details:</b> 125VDC BATTERY SYSTEM FOR 4160v METAL CLAD VACUUM INTERRUPTER SWITCHGEAR.

Seq #	Qty	Product Description
4	1	<b>Designation :</b> 1200A 4160V Feeders <b>Product Details:</b> 1 - Metal Enclosed Switchgear-METAL ENCLOSED SWITCHGEAR > 1000 VOLTS

GENERAL PRODUCT INFORMATION  
 THIS METAL-ENCLOSED SWITCHGEAR SHALL BE  
 DEPICTED IN THE ATTACHED DRAWINGS AND SHALL  
 INCLUDE THE FOLLOWING:

PRODUCT TYPE: HVLcc  
 3 SECTION LINE-UP  
 Enclosure Type: Type 1  
 1 - SET OF CERTIFIED TEST REPORTS INCLUDED  
 WITH FINAL DRAWINGS.  
 OVERALL DIMENSIONS: 60.00 IN 1524.00 mm WIDE  
 See Attached Drawings for Lineup Height  
 37.25 IN 946mm DEEP  
 APPROXIMATE WEIGHT: 2100.00 LBS. 952.56 kg.

#### SWITCHGEAR RATINGS

NOMINAL SYSTEM VOLTAGE: 4160V  
 SWITCHGEAR MAXIMUM VOLTAGE RATING: 5kV  
 MAIN BUS: 1200A TIN-PLATED COPPER  
 GROUND BUS: BARE COPPER  
 BIL : 60 KV  
 SWITCHGEAR MAXIMUM AVAILABLE FAULT CURRENT: 25kA

HVLCC does not support relay protection for fault currents

INTEGRATED SHORT CIRCUIT CURRENT RATINGS FOR SWITCHES WITH FUSES:

THE INTEGRATED SHORT CIRCUIT CURRENT RATINGS FOR SWITCHES WITH FUSES CAN BE FOUND IN THE INTEGRATED RATINGS TABLES. REFER TO THE CATALOG SECTIONS FOR EACH PRODUCT LINE.

SPECIFIC APPLICATION INFORMATION

SYSTEM GROUNDING: 3 Wire 3 Phase Wye  
Solidly Grounded  
FREQUENCY: 60Hz  
MAX AVAILABLE SHORT CKT CURRENT: 25kA (RMS)  
FRONT AND REAR ACCESS  
REAR ACCESS IS REQUIRED FOR THIS EQUIPMENT!

STANDARD & OPTIONAL ITEMS COMMON TO LINEUP

Customer Requirements: None - Build per Q2C  
EXTERIOR PAINT COLOR:  
ANSI 61 LIGHT GREY  
INSULATORS: EPOXY  
INSULATED BUS: HEAT SHRINK  
AC CONTROL POWER PROVIDED BY:  
FROM ADJACENT CONNECTED EQUIPMENT  
HOT STICK WITH FUSE HANDLING TOOL  
TOUCH UP PAINT PROVIDED  
Lineup Plastic Nameplate White Surface/Black Letters  
STANDARD ENCLOSURE HARDWARE  
APPLIES TO CATEGORY B APPLICATIONS  
WHERE THE GENERAL PUBLIC WILL NOT  
HAVE ACCESS TO THE SWITCHGEAR  
Space Heaters 1000W-240VAC (250W-120VAC)  
Infrared Viewing Windows Up to 3  
PADLOCK PROVISIONS FOR UP TO 3 LOCKS  
LABEL REQUIREMENTS : UL  
STANDARDS: ANSI  
4.0 IN PAINTED BASE CHANNEL  
LUGS ARE BURNDY COMPRESSION TYPE YA  
ONE HOLE ANTI-ROTATION (COPPER ONLY)

SPECIAL FEATURES OR TAG ITEMS (PER LINE-UP)

IF SPECIAL FEATURES ARE LISTED BELOW IN THIS BILL OF MATERIAL, THEY WILL NOT APPEAR ON THE FRONT ELEV OR ONE-LINE DRAWING AND MAY ALTER THE FINAL LAYOUT AND DIMENSIONS.

Section 1 UPR Feeder 20W, Unit 1, -  
1 - BUS TRANSITION SECTION TO MASTER-CLAD SWITCHGEAR - FO 0  
1 - SPACE HEATER 1000W-240VAC (250W-120VAC)  
1 - 3 PHASE SET OF #4 AWG COPPER  
COMPRESSION LUGS PER PHASE  
LOADSIDE (UL LISTED)  
3 - SQUARE D CURRENT LIMITING 5.5 KV 100E FUSES  
1 - FUSELOGIC BLOWN FUSE FLAG ON THE FRONT OF MECHANISM COVER  
1 - 600A SQUARE D TYPE HVLCC OVER TOGGLE MECHANISM (OTM) SWITCH, MANUALLY OPERATED,

THESE ARE THE SWITCHES VERSES STARTERS/CONTACTORS

APPLICATION A  
 600A CONTINUOUS & INTERRUPTING CURRENT  
 1 - INTERNAL GROUND SWITCH TO GROUND LOADSIDE  
 1 - Device Plastic Nameplate (Door) White  
 Surface / Black Letters

Section 2 UPR Feeder 20W, Unit 2, -  
 1 - SPACE HEATER 1000W-240VAC (250W-120VAC)  
 1 - 3 PHASE SET OF #4 AWG COPPER  
 COMPRESSION LUGS PER PHASE  
 LOADSIDE (UL LISTED)  
 3 - SQUARE D CURRENT LIMITING 5.5 KV 200E  
 FUSES  
 1 - FUSELOGIC BLOWN FUSE FLAG ON THE FRONT OF  
 MECHANISM COVER  
 1 - 600A SQUARE D TYPE HVLCC OVER TOGGLE  
 MECHANISM (OTM) SWITCH, MANUALLY OPERATED,  
 APPLICATION A  
 600A CONTINUOUS & INTERRUPTING CURRENT  
 1 - INTERNAL GROUND SWITCH TO GROUND LOADSIDE  
 1 - Device Plastic Nameplate (Door) White  
 Surface / Black Letters

THESE ARE THE SWITCHES VERSES  
 STARTERS/CONTACTORS

Section 3 UPR Feeder 20W, Unit 3, -  
 1 - SPACE HEATER 1000W-240VAC (250W-120VAC)  
 1 - 3 PHASE SET OF #4 AWG COPPER  
 COMPRESSION LUGS PER PHASE  
 LOADSIDE (UL LISTED)  
 3 - SQUARE D CURRENT LIMITING 5.5 KV 200E  
 FUSES  
 1 - FUSELOGIC BLOWN FUSE FLAG ON THE FRONT OF  
 MECHANISM COVER  
 1 - 600A SQUARE D TYPE HVLCC OVER TOGGLE  
 MECHANISM (OTM) SWITCH, MANUALLY OPERATED,  
 APPLICATION A  
 600A CONTINUOUS & INTERRUPTING CURRENT  
 1 - INTERNAL GROUND SWITCH TO GROUND LOADSIDE  
 1 - Device Plastic Nameplate (Door) White  
 Surface / Black Letters

THESE ARE THE SWITCHES VERSES  
 STARTERS/CONTACTORS

**Estimated days to ship, excluding transit:** 100 working days after customer release to manufacturer. See Conditions of Sale.

Seq #	Qty	Product Description
5	1	<p><b>Designation :</b> START-UP &amp; TRAINING</p> <p><b>Product Details:</b></p> <p>1 - SRVSQDSER-Startup Services - Straight Time</p> <p>The following startup scope of work is            Schneider Electric's manufacturer            recommended scope of work for Startup            Services.</p> <p>If specific tests are needed during startup            or if there are specifications for the            startup of the equipment a separate quote            will need to be provided.</p> <p>Schneider Electric will perform the Scope of            Work per Schneider Electric document            1910DB1302-120213 Scopes of Work for            Electrical Acceptance Testing.</p> <p>Work will be performed during Straight Time            (any scheduled 8 hour period between 06:00            and 18:00 hours Monday thru Friday).</p> <p>It is estimated that the service will be            performed using one technician with all            equipment and tests performed in immediate            succession, unless otherwise specified.</p> <p>If equipment is not available or prepared to</p>

be tested in the number of days specified, additional travel and expense charges may apply.

For each hour that SE Services is delayed at the job site due to the unavailability of the equipment for any reason, a charge at the applicable T&M rates will be added to the invoice.

Startup scope of work includes Schneider Electric technician supervision during energization of equipment. Quote price is based on energization during final day of inspection and testing.

If additional trips are required in order to provide energization supervision, additional travel, expense and labor charges will apply. To schedule date for start of work, call: 1-888-SQUARED (1-888-778-2733).

Schneider Electric services must be contacted prior to 2 weeks from the required date of service to avoid additional charges. Reference SE Terms and Conditions of Sale for Proposal Based Projects 0100PL0043R12/12 dated 12/2012.

Formal test report(s) will be provided upon completion of the startup service.

Trip summary:

Round Trip Distance: Up to 150 Miles

Technician will make 1 trip to the job site per day of service (total of trips)

2 Days Informal Training

Equipment to be started up and included in this complimentary warranty is listed below.

Sel Rev: (20160224/20160224)

Tra Rev: 5/28/2021 1:10:32 AM/ 5/27/2021

\*\*\*\*\*  
Following user entered devices included in startup:

None

\*\*\*\*\*  
12 month complimentary extended warranty. Schneider Electric Services is pleased to offer a complimentary 12 month warranty extension above and beyond our standard warranty and any purchased extended warranties.

Std equipment warranty is 18 months from date of shipment or 12 months from issuance of a substantial completion letter by the customer subject to Schneider Electric Terms and Conditions of Sale for Proposal Based Projects 0100PL0043R12/12 dated 12/2012.

The 12 month warranty extension only applies to equipment that is successfully tested, started up, invoiced by SE, and paid in full by the customer.

If startup with SE Services is not completed and paid in full, the bonus 12 month warranty will be invalid, but the standard warranty and any purchased extended warranties will still be in effect.

Drives are not included in this complimentary warranty upgrade and are

covered by a 30 month warranty extension  
with startup completion.

Serviced item - Line Item 40935463  
Qty 1 - Motorpact  
Designation: SECIION 26 18 39

Serviced item - Line Item 69948758  
Qty 1 - Standard Metal Clad  
Designation: SECTION 26 13 19  
Includes optional test for CT/PT: Basic  
Testing

Includes optional test for CT/PT:  
Dielectric Withstand  
Includes optional test for CT/PT: Total  
Burden  
Includes optional test for Ground  
Resistance Testing  
Includes optional test for Relays: System  
Testing

1 - SIBS12MONTHEXTWARRWSTARTUP-SIBS 12 MO EXTENDED WARRANTY W/ STARTUP

Schneider Electric Services is pleased to  
offer a complimentary 12 month warranty  
extension above and beyond our standard  
warranty and any purchased extended  
warranties.

Std equipment warranty is 18 months from  
date of shipment or 12 months from  
issuance of a substantial completion  
letter by the customer subject to  
Schneider Electric Terms and Conditions  
of Sale for Proposal Based Projects  
0100PL0043R12/12 dated 12/2012.

The 12 month warranty extension only  
applies to equipment that is successfully  
tested, started up, invoiced by SE, and  
paid in full by the customer.

If startup with SE Services is not  
completed and paid in full, the bonus 12  
month warranty will be invalid, but the  
standard warranty and any purchased  
extended warranties will still be in  
effect.

Drives are not included in this  
complimentary warranty upgrade and are  
covered by a 30 month warranty extension  
with startup completion.

Seq #	Qty	Product Description
6	1	<b>Designation :</b> FACTORY WITNESS TEST <b>Product Details:</b> 1 - Metal-Clad Witness Test-Metal Clad Witness Test Metal-Clad Witness Testing 0003 Sections, 001 Days (est)
Seq #	Qty	Product Description
7	2	<b>Designation :</b> Box PC for HMI <b>Product Details:</b> HMIG5U2-HMI GTU CPU Box Open Type
Seq #	Qty	Product Description
8	2	<b>Designation :</b> Touch Screen <b>Product Details:</b> HMIDT952-19W Touch Smart Display FWXGA
Seq #	Qty	Product Description
9	2	<b>Designation :</b> Ethernet Switch

**Product Details:** TCSESU103F2CS0-CONNEXIUM UNMANAGED SWITCH 8TX/2FX SM

**Estimated days to ship, excluding transit:** 31 working days after customer release to manufacturer. See Conditions of Sale.

Seq #	Qty	Product Description
10	1	<b>Designation :</b> EPAS HMI Software <b>Product Details:</b> EPASHMIAPP-EPAS_HMI(Svr,Clnt,WebHMI);1 lic per PC

**Estimated days to ship, excluding transit:** 30 working days after customer release to manufacturer. See Conditions of Sale.

Seq #	Qty	Product Description
11	1	<b>Designation :</b> EPAS GTW Software <b>Product Details:</b> EPASGTWAPP-EPAS_GTW;Windws;61850,SCADA,legcy protoc

**Estimated days to ship, excluding transit:** 30 working days after customer release to manufacturer. See Conditions of Sale.

Seq #	Qty	Product Description
12	1	<b>Designation :</b> 20 In-office days <b>Product Details:</b> 1 - DPPRTCTRLETO-PCA Protection & CTRL Systems Line Containing: Qty 20 - In Office Engineering

Seq #	Qty	Product Description
13	1	<b>Designation :</b> In-Office (Relay) <b>Product Details:</b> 1 - DPPRTCTRLETO-PCA Protection & CTRL Systems Line Containing: Qty 4 - Project Management

Seq #	Qty	Product Description
14	1	<b>Designation :</b> On-Site <b>Product Details:</b> 1 - DPPRTCTRLETO-PCA Protection & CTRL Systems Line Containing: Qty 12 - On-Site

Seq #	Qty	Product Description
15	1	<b>Designation :</b> Hardware Prices <b>Product Details:</b> 1 - DPPRTCTRLETO-PCA Protection & CTRL Systems Line Containing: Qty 1 - Wall Mount Enclosure Qty 1 - HMI Servicer Qty 1 - Misc

Seq #	Qty	Product Description
16	1	<b>Designation :</b> Project Management (Relay) <b>Product Details:</b> 1 - DPPRTCTRLETO-PCA Protection & CTRL Systems Line Containing: Qty 1 - Project Mgmt (Relay)

Seq #	Qty	Product Description
17	1	<b>Designation :</b> On-Site (Relay) <b>Product Details:</b> 1 - DPPRTCTRLETO-PCA Protection & CTRL Systems Line Containing: Qty 4 - On-Site (Relay)



**Prepared By:**

Corrie Bukle

Key Account Manager

corrie.bukle@se.com

**Proposal Name:** Camp Creek WWTP

**Quote Name:** Excel Takeoff

---

**Proposal Number:** P-200220-1436685

**Quote Number:** Q-2562127

**Through Addenda Number:** 0

**Sales Representative:** Corrie Bukle

**Conditions of Sale**

*Except as otherwise provided below, this Quotation is subject to Coordinated Project Terms. See <https://www.schneider-electric.us/en/download/document/0100PL0043>*

Notwithstanding any provision to the contrary in the referenced Coordinated Project Terms or any other documentation provided in connection with this proposal, this quote is valid for 30 days. Quoted lead times are approximate and subject to change.

Schneider Electric reserves the right to amend, withdraw or otherwise alter this submission without penalty or charge as a result of any event beyond its control arising from or due to the current Covid-19 epidemic or events subsequent to this epidemic / pandemic including changes in laws, regulations, by laws or direction from a competent authority.

**Clarifications**

1. Coordination Studies by others.
2. Add to existing equipment to be furnished by Schneider and installed by electrical contractor
3. Startup is included for the metalclad switchgear lineup.
4. Standard Terms and Conditions apply.
5. Spare relay included

**Digital Power:**

**SCOPE:**

Digital Power (DP) is providing local and remote HMI panel and protection relay configuration and startup services per Camp Creek WRF UV Replacement specification 4 page 374 [no indicated date] and 60% design drawing package dated 1/15/2021.

**CLARIFICATIONS:**

**Local and Remote HMI (Refer Figure 1):**



- A total of 5 breakers part of the 4.16kV MV gear are assumed to be monitored and controlled from the HMI.
- The breakers will be monitored and controlled via the SEL 751 relay connected to each breaker. No other meter or device other than the 5 SEL relays will be interfaced with the HMI
- Communication between the SEL relays and the HMI is assumed to be over IEC 61850
- An HMI screen is expected to be door mounted on the controls subsection of the 4.16kV MV gear. This shall be the local HMI
- A total of 2 screen views will be made available on the HMI- one view showing the overall one line of the 4.16 kV system and another view showing the communications status of the 5 SEL 751 relays
- Only manual open/close operation of the breakers is considered here. No automation logic or sequence of operation will be built inside the HMI
- The remote HMI panel will be a NEMA 12 wall mountable enclosure
- The remote HMI shall have the same views as the local HMI
- No seismic certification or specific UL certification considered for the remote HMI panel
- Installation of the remote HMI panel is considered to be done by others
- Communication cabling between the local Hmi in the 4.16 kV gear and the remote HMI panel is assumed to be done by others
- All the breaker statuses will be made available to the plant SCADA over MODBUS TCP
- On site start-up included
- One day of post-startup basic operational training included
- An 18.5" touchscreen HMI is considered instead of 24" as required in the spec

#### **Protection Relay Services**

- Protection settings to be programmed into the relays shall be provide by others
- SWGR drawings to be done by others
- All relays assumed to be equipped with IEC 61850 option
- Communication of the relays to the HMI is assumed to be over IEC 61850

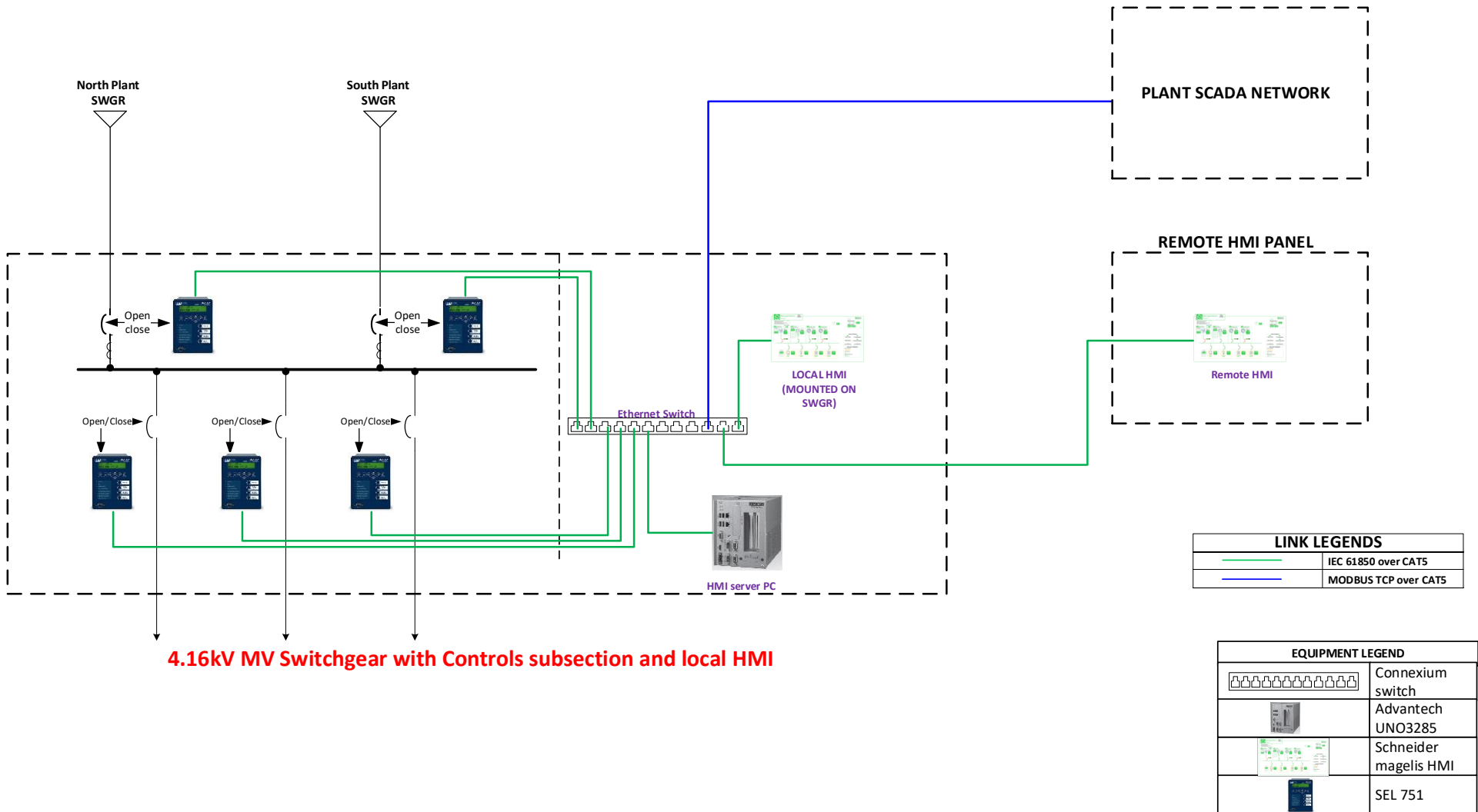


Figure 1 System Architecture

## SCOPE OF WORK COMMENTS:

### General Scope Comments:

Items designated as "provided by others" are not included in this quote.

Items not listed on the bill of material are assumed to be provided by others.

Physical installation and wiring between supplied equipment is provided by others.

It is assumed that the Ethernet network is supplied by others. This quotation does not include any network components other than what is on the bill of material.

Quote assumes services will take place during daytime hours, Mon-Fri, roughly 7 AM CST to 4 PM local time.

### Proposal/Order information Comments:

Schneider Electric will provide pre-startup documentation to customer which needs to be completed before startup can be scheduled.

Standard Schneider Electric Terms and Conditions apply.

It is the purchaser's obligation to review the proposal/quotation carefully and to immediately advise Schneider Electric of any differing interpretations the purchaser has so that any necessary changes can be made prior to purchase.

Important notice: Please check the following link for additional Terms and Conditions =>

[https://download.schneider-electric.com/files?p\\_Doc\\_Ref=0100PL1901](https://download.schneider-electric.com/files?p_Doc_Ref=0100PL1901)

## **26 13 19 MV Vacuum Interrupter SWGR**

**5.02E – The gear provided is Arc Resistant**

**5.11B – SEL751 relays are not drawout**

**5.12A,5 – Ground and test device is only furnished with mains having feeder circuits. There are none in this configuration and we did not provide.**

## **26 18 39 MV Motor Starters**

**2.02C – Schneider Electric contactor is 250,000**

**2.03D – 200A provided because the max CT ration is 200:5**

**2.10A – We do not offer N12, only N1 gasketed.**



Seq #	Qty	Product Description
1	1	<p><b>Designation :</b> SECTION 26 13 19</p> <p><b>Product Details:</b></p> <p>1 - MetalClad Switchgear-Metal Clad Switchgear</p> <p>-----</p> <p>METAL CLAD Switchgear Assembly Consisting of the following: 4 Section Line-up</p> <p>Door Mounted Ethernet Port 1 - Com'X 510 Communication Gateway / Energy Server 1 Set of Certified Test Reports included with Final Drawings IBC/ASCE7 Seismic Qualification Indoor (Type 1) Label Requirements: UL With Front and Rear Access Required AC Panel - Branch Breakers per Plans and Spec</p> <p>If Customer Witness Testing Required, must add in separately from this Bill of Material and price in at Standard Square D daily rate.</p> <p>Equipment Ratings</p> <p>-----</p> <p>Nominal System Voltage: 4.16kV, 3 Phase, 3 Wire, Ungrounded Delta Maximum Bus Continuous Current: 1200A Maximum Short Circuit Current: 40kA (RMS Symmetrical) Maximum Voltage: 4.76KV One-Minute Withstand Voltage: 19kv RMS Impulse Withstand Voltage (BIL): 60kV Frequency: 60 Hertz</p> <p>Lineup Options</p> <p>-----</p> <p>1 - CPT Transfer - 2 CPTs 1 - Test Cabinet, 8 ft. cable 1 - Test Jumper, 14 ft. cable only Breaker Lift Truck Cable Support/Clamp for each breaker Control wiring terminations: 9080G R6 Compression Type Electric racking motor accessory w/ 50 ft. cord, requires 120Vac or optional CPT &amp; recepticle Manual Ground and Test, 5/15kV, 1200/2000A w/o Remote Control</p> <p>Structure Information</p> <p>-----</p> <p>1200A Silver Plated Copper Main Bus Bus Bracing: 50kA (RMS Symmetrical) Bus Supports: Glass Polyester Glass Polyester Pass-Through Inserts in Glass Polyester Bus Barrier (between sections)(Std) Ground Bus: Silver Plated Copper Aluminum Compression Lugs - AL/CU Cables 1 - Strip Heaters (Internal Power Source) w/ Thermostat (per section) 2 Infrared Viewing Windows per Cubicle Cable Compartment Ammeter and Circuit Breaker for Strip Heater Circuit Breaker Close Control Power: Customer</p>



Date:

Life Is On



Supplied 125VDC  
Breaker Trip Control Power: Customer Supplied  
125VDC  
Exterior Paint Color: ANSI #61, Light Gray  
(Std)  
Indication Lights - LED Type lamps  
Rear Access, Bolted Panel  
White Interior LV Panels

Dimensions:  
Width of Lineup: 122.75" - 3117.85mm  
Height @ Highest Point: 95.10" 2416 mm  
Depth @ Base: 92.00" 2337 mm

Special Features or TAG Items (per line-up)

-----  
If Special Features are included in this  
Bill of Material, they will NOT appear on the  
Front-Elev or One-line Drawing and may alter  
the final layout and dimensions.

Detailed Bill of Material

-----  
This Metal Clad Switchgear shall be  
depicted in the attached drawing and shall  
include the following:

Section 1 - 14.75W, Full-height section, -  
Managed Ethernet Switch  
4 - Ethernet Cat5E cabling  
Transition Section to Motorpact - MVMcc

Section 2 - 36W, -  
2 - Ethernet Cat5E cabling  
1 - Set Cable Termination Boots - Incoming  
Power Connection

Section 2 - 36W, Upper - Auxiliary  
1 - VT Drawer with (2) VTs, (2) Primary Fuses  
per VT  
1 - 15kVA, Single Phase CPT

Section 2 - 36W, Lower - Breaker\_1200A,  
- Main A -  
Catalog Number: V5D3133Y000  
1 - TOC Switch Supplying 10 Additional  
Contacts (5a, 5b)  
1 - 4.76kV Max. Voltage, 250MVA / 40KA,  
1200A, Vacuum Breaker Type: VR-05025-12  
1 - Key Interlock (per key) Manufacturer :  
Kirk  
1 - Breaker Control Switch 1t, 1c  
1 - MOC Switch Supplying 10 Additional  
Contacts (5a, 5b)  
2 - Test Blk/Sw for Ctrl Schematic  
1 - Local/Remote Switch  
1 - Schweitzer Relay SEL 751  
1 - Quantity 3 Al Comp Lug for Al/Cu Cable  
Size 600 kcmil  
3 - Single Ratio 1200A:5A CT - Standard  
Accuracy - Model 780 - Set#1

Section 3 - 36W, -  
Managed Ethernet Switch

Section 3 - 36W, Upper - CPTTransfer



Section 3 - 36W, Lower - Blank

Section 4 - 36W, -  
2 - Ethernet Cat5E cabling  
1 - Set Cable Termination Boots - Incoming  
Power Connection

Section 4 - 36W, Upper - Auxiliary  
1 - VT Drawer with (2) VTs, (2) Primary Fuses  
per VT  
1 - 15kVA, Single Phase CPT

Section 4 - 36W, Lower - Breaker\_1200A,  
- Main A -  
Catalog Number: V5D3133Y000  
1 - TOC Switch Supplying 10 Additional  
Contacts (5a, 5b)  
1 - 4.76kV Max. Voltage, 250MVA / 40KA,  
1200A, Vacuum Breaker Type: VR-05025-12  
1 - Key Interlock (per key) Manufacturer :  
Kirk  
1 - Breaker Control Switch 1t, 1c  
1 - MOC Switch Supplying 10 Additional  
Contacts (5a, 5b)  
2 - Test Blk/Sw for Ctrl Schematic  
1 - Local/Remote Switch  
1 - Schweitzer Relay SEL 751  
1 - Quantity 3 Al Comp Lug for Al/Cu Cable  
Size 600 kcmil  
3 - Single Ratio 1200A:5A CT - Standard  
Accuracy - Model 780 - Set#1

**Estimated days to ship, excluding transit:** The estimated shipping days cannot be determined at this time, please contact your field office representative for more information.

Seq #	Qty	Product Description
2	1	<b>Designation :</b> 125VDCBATTERY SYSTEM <b>Product Details:</b> 125VDC BATTERY SYSTEM FOR 4160v METAL CLAD VACUUM INTERRUPTED SWITCHGEAR.

Seq #	Qty	Product Description
3	1	<b>Designation :</b> 125VDC Panelboard <b>Product Details:</b> 1 - ILINE MB PNLB (INT BOX TRIM)-I-Line Panelboard Consisting of 125Vdc 2W SCCR: 10kA Fully Rated Single Main: 150A/2P HD Circuit Breaker Incoming Conductors: 1 - #14 - 3/0 AWG AL Ground Bar Bus: 250A Rated Aluminum: Tin Plated 45" of Mounting Inches Type 1,Box: 73H x 32W x 9.5D Incoming: Bottom Trim: Surface with Door Box Cat No: HC3273DB9 Front Cat No: HCM73TSD Ref. Drawing: PBA470 Type: HCJ Feeders: 8 - 20A/2P BD Optional Features: Ship Completely Assembled,Standard Ground Bar,Standard Mains and Feeders Mechanically Restrained <b>Estimated days to ship, excluding transit:</b> 30 working days after customer release to manufacturer. See Conditions of Sale.

Seq #	Qty	Product Description
4	1	<b>Designation :</b> SECTION 26 18 39 <b>Product Details:</b>



Date:

Life Is On



1 - Medium Voltage Motor Control Cent+-General Equipment Ratings  
Motor Control Center > 1000 Volts

-----  
Section (Unit Sequence) Line-up

Consisting of the following:

Nominal System Voltage: 4000/4160 V

System Type: 3 Wire Solid Ground

System Frequency: 60 Hertz

Control Voltage: Customer Supplied 125 VDC

Ctl Pwr for Protection Relays: 125 VDC

BIL: 60kV (std)

Exterior Color: ANSI #61, Light Gray (Std.)

Label Requirements: CUL

NEMA Standard/Design

Ambient Air Temperature:

>-30C(-22F) & <40C(104F) (Std.)

Altitude: 0 - 3299 feet above sea level (Std)

System Calculated Full Load Amps:

If Total System Amps Exceeds Main Bus

Rating, Then Customer Should Confirm

They Know This and Accept Responsibility

For Proper System Loading Not To

Exceed Main Bus Rating.

Warning: This product can expose you to chemicals including Nickel compounds, which are known to the State of California, and Bisphenol A (BPA), which is known to the State of California to cause birth defects or other reproductive harm.

For more information go to  
[www.P65Warnings.ca.gov](http://www.P65Warnings.ca.gov).

\*\*\*\*

General Structure Information

-----  
Exterior Color: ANSI #61, Light Gray (Std.)

Unplated CU Ground Bus

Power Cable Lugs: Supplied By Customer (Std.)

\*\*\*\*

\*\*\*\*

Terminal Block and Lug Type: Two-Tier,  
Compression Box

\*\*\*\*

Overall Dimensions:

Width: 60" 1524mm

Height: 90.60" 2300mm

Depth: 37.25" 946mm (foot print)

Relays: Drawout Case Style

Relays: Communications Required

Factory Determined Shipping Splits (75" Max)

Fuse Brand: Square D Class R and Class E, DIN

Line-up Indicating Light Type: LED (Std)

Low Voltage Control Wiring THHN (Std.)

\*\*\*\*

Free-Standing Lineup Configuration

Front and Rear Access

Indoor Gasketed Enclosure Type 1A

(1) Set of Certified Test Reports

Detailed Bill of Material

Special Features or TAG Items (per line-up)

-----

-----  
If Special Features are included in this  
Bill of Material, they will NOT appear on the



Date:

Life Is On



the final layout and dimensions.  
Network Communications Only  
System Communications  
Ethernet Switch with RJ-45 Port.  
All Modbus devices pre-wired and pre-tested  
at the factory  
1 - Com'X 510 Communication Gateway / Energy  
Server

Controller Type Key for abbreviations:

FVNR = Full Voltage Non-Reversing

FVNR Latched = FV Non-Reversing Latched

FVR = Full Voltage Reversing

RVNR AT = RV Non-Reversing Autotransformer

RVNR Reactor = RV Non-Reversing Reactor

RVR AT = RV Reversing Autotransformer

RVR Reactor = RV Reversing Reactor

Sync = Synchronous Type Controller

FVS = Full Voltage Starter for S3

S3 = Sequential Soft Start Type Controller

SS = Soft Start Type Controller

\*\*\*\*

This MV Motor Control Lineup shall be  
depicted in the attached drawing and shall  
include the following:

\*\*\*\*

Touch-up Paint included in carton pack

#### Incoming

Connected to New MasterClad Equipment

Incoming Source Location - Right

Cable Termination Boots

1 Ground Lug

Equipment Front Aligned

Distribution Class Surge Arresters

Low Voltage Compartment

1

Section 1 - Controller - 20W, -

Thermostat for Strip Heaters

Circuit Breakers for Cabinet Strip Heater

Circuits

Unplated Copper Ground Bus

1200 CU w/ Tin Plating (Std.) Insulated Main  
Bus

1 - Spare Low Voltage Terminal Blocks - 10% -

Legend:

Strip Heaters - 240V Rated, 120V Applied

1 - Latched FVNR Controller, 200A, Drawout

Latched Trip Coil Voltage: 125VDC

Trip Coil Voltage by: Customer (external)

Non-Motor Load Application

User Entered Horsepower:

1 - Shorting TB for 3 Phase CT

12 Gauge CT Wiring in LV Compartment (Std)

1 - Zero Sequence CT

1 - Contactor Open/Close Status Window

1 - Cable Support

Class E Fuses, 5kV DIN 100E

1st 3 Phase CT use: Protective Relay

Schweitzer 751A (current only)

1 - 3-Phase 200/5 CT

2 - Spare Sets Class E Fuses, 5kV DIN 100E

1 - 500 kcmil Cable (per phase) Loadside

1 - BFI or LDA Status Window

1 - Basic Control Package: (1) Start

Pushbutton, (1) Stop Pushbutton, (1) Red

Run Pilot, (1) Green Off Pilot Light (Std)

THE THREE SWITCHES TAKE AWAY  
ALL HIGHLIGHTED ITEMS



Date:



1 - BF Trip & Indication w/2 Form C Aux  
Contacts  
Motor Service Factor: 1.00 (Std.)  
●  
Section 2 - Controller - 20W, -  
Thermostat for Strip Heaters  
Circuit Breakers for Cabinet Strip Heater  
Circuits  
Unplated Copper Ground Bus  
1200 CU w/ Tin Plating (Std.) Insulated Main  
Bus  
1 - Spare Low Voltage Terminal Blocks - 10% -  
Legend:  
Strip Heaters - 240V Rated, 120V Applied  
1 - Latched FVNR Controller, 200A, Drawout  
Latched Trip Coil Voltage:125VDC  
Trip Coil Voltage by: Customer (external)  
Non-Motor Load Application  
User Entered Horsepower:  
1 - Shorting TB for 3 Phase CT  
12 Gauge CT Wiring in LV Compartment (Std)  
1 - Zero Sequence CT  
1 - Contactor Open/Close Status Window  
1 - Cable Support  
Class E Fuses, 5kV DIN 100E  
1st 3 Phase CT use: Protective Relay  
Schweitzer 751A (current only)  
1 - 3-Phase 200/5 CT  
2 - Spare Sets Class E Fuses, 5kV DIN 100E  
1 - 500 kcmil Cable (per phase) Loadside  
1 - BFI or LDA Status Window  
1 - Basic Control Package: (1) Start  
Pushbutton, (1) Stop Pushbutton, (1) Red  
Run Pilot, (1) Green Off Pilot Light (Std)  
1 - BF Trip & Indication w/2 Form C Aux  
Contacts  
Motor Service Factor: 1.00 (Std.)  
●  
Section 3 - Controller - 20W, -  
Thermostat for Strip Heaters  
Circuit Breakers for Cabinet Strip Heater  
Circuits  
Unplated Copper Ground Bus  
1200 CU w/ Tin Plating (Std.) Insulated Main  
Bus  
1 - Spare Low Voltage Terminal Blocks - 10% -  
Legend:  
Strip Heaters - 240V Rated, 120V Applied  
1 - Connection to New MasterClad on Right  
Front-Aligned  
1 - Latched FVNR Controller, 200A, Drawout  
Latched Trip Coil Voltage:125VDC  
Trip Coil Voltage by: Customer (external)  
Non-Motor Load Application  
User Entered Horsepower:  
1 - Shorting TB for 3 Phase CT  
12 Gauge CT Wiring in LV Compartment (Std)  
1 - Zero Sequence CT  
1 - Contactor Open/Close Status Window  
1 - Cable Support  
Class E Fuses, 5kV DIN 100E  
1st 3 Phase CT use: Protective Relay  
Schweitzer 751A (current only)  
1 - 3-Phase 200/5 CT  
2 - Spare Sets Class E Fuses, 5kV DIN 100E  
1 - 500 kcmil Cable (per phase) Loadside  
1 - BFI or LDA Status Window



Life Is On



1 - Basic Control Package: (1) Start  
Pushbutton, (1) Stop Pushbutton, (1) Red  
Run Pilot, (1) Green Off Pilot Light (Std)  
3 - 6 kV Distribution Class LAs on Loadside  
1 - BF Trip & Indication w/2 Form C Aux  
Contacts  
Motor Service Factor: 1.00 (Std.)

**Estimated days to ship, excluding transit:** 165 working days after customer release to manufacturer. See Conditions of Sale.

Seq #	Qty	Product Description
5	1	<p><b>Designation :</b> START-UP &amp; TRAINING</p> <p><b>Product Details:</b></p> <p>1 - SRVSQDSER-Startup Services - Straight Time</p> <p>The following startup scope of work is Schneider Electric's manufacturer recommended scope of work for Startup Services.</p> <p>If specific tests are needed during startup or if there are specifications for the startup of the equipment a separate quote will need to be provided.</p> <p>Schneider Electric will perform the Scope of Work per Schneider Electric document 1910DB1302-120213 Scopes of Work for Electrical Acceptance Testing.</p> <p>Work will be performed during Straight Time (any scheduled 8 hour period between 06:00 and 18:00 hours Monday thru Friday).</p> <p>It is estimated that the service will be performed using one technician with all equipment and tests performed in immediate succession, unless otherwise specified.</p> <p>If equipment is not available or prepared to be tested in the number of days specified, additional travel and expense charges may apply.</p> <p>For each hour that SE Services is delayed at the job site due to the unavailability of the equipment for any reason, a charge at the applicable T&amp;M rates will be added to the invoice.</p> <p>Startup scope of work includes Schneider Electric technician supervision during energization of equipment. Quote price is based on energization during final day of inspection and testing.</p> <p>If additional trips are required in order to provide energization supervision, additional travel, expense and labor charges will apply. To schedule date for start of work, call: 1-888-SQUARED (1-888-778-2733).</p> <p>Schneider Electric services must be contacted prior to 2 weeks from the required date of service to avoid additional charges.</p> <p>Reference SE Terms and Conditions of Sale for Proposal Based Projects 0100PL0043R12/12 dated 12/2012.</p> <p>Formal test report(s) will be provided upon completion of the startup service.</p> <p>Trip summary: Round Trip Distance: Up to 150 Miles</p>



Date:



Technician will make 1 trip to the job site  
per day of service (total of trips)  
2 Days Informal Training  
Equipment to be started up and included in  
this complimentary warranty is listed below.  
Sel Rev: (20160224/20160224)  
Tra Rev: 5/28/2021 1:10:32 AM/ 5/27/2021

\*\*\*\*\*  
Following user entered devices included in  
startup:  
None  
\*\*\*\*\*

12 month complimentary extended warranty.  
Schneider Electric Services is pleased to  
offer a complimentary 12 month warranty  
extension above and beyond our standard  
warranty and any purchased extended  
warranties.  
Std equipment warranty is 18 months from  
date of shipment or 12 months from  
issuance of a substantial completion  
letter by the customer subject to  
Schneider Electric Terms and Conditions  
of Sale for Proposal Based Projects  
0100PL0043R12/12 dated 12/2012.  
The 12 month warranty extension only  
applies to equipment that is successfully  
tested, started up, invoiced by SE, and  
paid in full by the customer.  
If startup with SE Services is not  
completed and paid in full, the bonus 12  
month warranty will be invalid, but the  
standard warranty and any purchased  
extended warranties will still be in  
effect.  
Drives are not included in this  
complimentary warranty upgrade and are  
covered by a 30 month warranty extension  
with startup completion.

Serviced item - Line Item 40935463  
Qty 1 - Motorpact  
Designation: SECIION 26 18 39

Serviced item - Line Item 69948758  
Qty 1 - Standard Metal Clad  
Designation: SECTION 26 13 19  
Includes optional test for CT/PT: Basic  
Testing  
Includes optional test for CT/PT:  
Dielectric Withstand  
Includes optional test for CT/PT: Total  
Burden  
Includes optional test for Ground  
Resistance Testing  
Includes optional test for Relays: System  
Testing  
1 - SIBS12MONTHEXTWARRWSTARTUP-SIBS 12 MO EXTENDED WARRANTY W/ STARTUP  
Schneider Electric Services is pleased to  
offer a complimentary 12 month warranty  
extension above and beyond our standard  
warranty and any purchased extended  
warranties.  
Std equipment warranty is 18 months from  
date of shipment or 12 months from



Date:



issuance of a substantial completion letter by the customer subject to Schneider Electric Terms and Conditions of Sale for Proposal Based Projects 0100PL0043R12/12 dated 12/2012. The 12 month warranty extension only applies to equipment that is successfully tested, started up, invoiced by SE, and paid in full by the customer. If startup with SE Services is not completed and paid in full, the bonus 12 month warranty will be invalid, but the standard warranty and any purchased extended warranties will still be in effect. Drives are not included in this complimentary warranty upgrade and are covered by a 30 month warranty extension with startup completion.

Seq #	Qty	Product Description
6	1	<b>Designation :</b> FACTORY WITNESS TEST <b>Product Details:</b> 1 - Metal-Clad Witness Test-Metal Clad Witness Test Metal-Clad Witness Testing 0003 Sections, 001 Days (est) MVMCC Witness Test MVMCC Witness Testing 0003 Sections, 001 Days (est) 1 - MVMCC Witness Test-MVMCC Witness Test MVMCC Witness Testing 0003 Sections, 001 Days (est)
Seq #	Qty	Product Description
7	2	<b>Designation :</b> Box PC for HMI <b>Product Details:</b> HMIG5U2-HMI GTU CPU Box Open Type
Seq #	Qty	Product Description
8	2	<b>Designation :</b> Touch Screen <b>Product Details:</b> HMIDT952-19W Touch Smart Display FWXGA
Seq #	Qty	Product Description
9	2	<b>Designation :</b> Ethernet Switch <b>Product Details:</b> TCSESU103F2CS0-CONNEXIUM UNMANAGED SWITCH 8TX/2FX SM  <b>Estimated days to ship, excluding transit:</b> 31 working days after customer release to manufacturer. See Conditions of Sale.
Seq #	Qty	Product Description
10	1	<b>Designation :</b> EPAS HMI Software <b>Product Details:</b> EPASHMIAPP-EPAS_HMI(Svr,Clnt,WebHMI);1 lic per PC  <b>Estimated days to ship, excluding transit:</b> 30 working days after customer release to manufacturer. See Conditions of Sale.
Seq #	Qty	Product Description
11	1	<b>Designation :</b> EPAS GTW Software <b>Product Details:</b> EPASGTWAPP-EPAS_GTW;Windws;61850,SCADA,legcy protoc  <b>Estimated days to ship, excluding transit:</b> 30 working days after customer release to manufacturer. See Conditions of Sale.
Seq #	Qty	Product Description
12	1	<b>Designation :</b> 20 In-office days



Proposal Name: Camp Creek WWTP  
Quote Name: Excel Takeoff

Quote Number: Q-2562127  
Addendum: 0

Date:



**Product Details:**

1 - DPPRTCTRLETO-PCA Protection & CTRL Systems Line Containing:  
Qty 20 - In Office Engineering

Seq #	Qty	Product Description
13	1	<b>Designation :</b> In-Office (Relay) <b>Product Details:</b> 1 - DPPRTCTRLETO-PCA Protection & CTRL Systems Line Containing: Qty 4 - Project Management

Seq #	Qty	Product Description
14	1	<b>Designation :</b> On-Site <b>Product Details:</b> 1 - DPPRTCTRLETO-PCA Protection & CTRL Systems Line Containing: Qty 12 - On-Site

Seq #	Qty	Product Description
15	1	<b>Designation :</b> Hardware Prices <b>Product Details:</b> 1 - DPPRTCTRLETO-PCA Protection & CTRL Systems Line Containing: Qty 1 - Wall Mount Enclosure Qty 1 - HMI Servicer Qty 1 - Misc

Seq #	Qty	Product Description
16	1	<b>Designation :</b> Project Management (Relay) <b>Product Details:</b> 1 - DPPRTCTRLETO-PCA Protection & CTRL Systems Line Containing: Qty 1 - Project Mgmt (Relay)

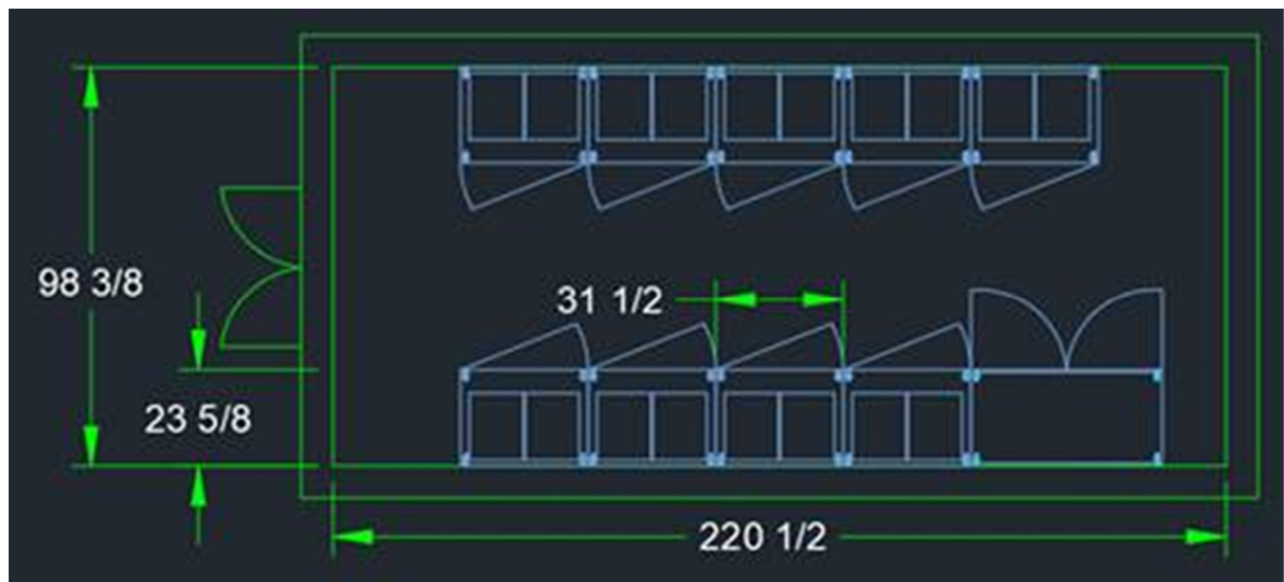
Seq #	Qty	Product Description
17	1	<b>Designation :</b> On-Site (Relay) <b>Product Details:</b> 1 - DPPRTCTRLETO-PCA Protection & CTRL Systems Line Containing: Qty 4 - On-Site (Relay)

## **Attachment #2**

### **Value Engineering Item #2**

**Provide and Install Prefabricated Electrical Building**

## Proposed Preliminary Layout of the Prefabricated Building



<https://www.orengo.com/products/composite-products>



***Innovative fiberglass products***

June 17, 2021

Customer: Wedeco

Contact: Julia Beilsmith

Project Name: UGA - Camp Creek Wedeco

Product Type: DuraFiber® Building(s)

**DuraFiber: the stronger, better pre-fabricated fiberglass building:**

- Molded using vacuum infusion, an environmentally-friendly closed-molding
  - Allows single monolithic molded structures – no seams, no leaks, no assembly required
  - Provides super-strong, durable structures through the use of high strength fiberglass fabrics
  - Superior to the conventional spray up molding process in virtually every way
- 100% composite structure, no wood to rot, no steel to rust
- Insulated walls and roof, R18 – R24 insulation value is standard
- Installation of building is very quick, simply bolt to a concrete pad/foundation
- Structurally pre-engineered for the toughest environments

**Important Notes:**

- Refer to notes section at the bottom of the quote for important notes and assumptions



**Innovative fiberglass products**

Project Name	UGA - Camp Creek Wedeco VE Building	
Date	6/17/21	
Document Type	Budgetary Estimate	
Description	DuraFiber Building - 12' Width x 9' Height x 20' Length	
Item	Description	Qty
<b>Building</b>		
Dimensions	12' Width x 9' Height x 20' Length	1
Construction Type	4" Foam Core, 100% Composite, Molded Construction, R24 Insulation Value, Lifting Eye(s)	1
Design	Single Piece Construction	1
Color Option	Torque Tan	1
Resin Option	n/a	0
Install Kit/Anchor Bolts	Anchor, Wedge, Stainless Steel, Trubolt 1/2" x 5-1/2"	21
Install Kit/Butyl	Concrete Gasket, 5/8" x 3/4" x 88"	9
Partition Wall(s)	n/a	0
Mounting Harware Kit	1 Rivet Nut Hand Tool, 25 Rivet Nuts, 50 Walldog Screws	1
<b>Door/Hardware</b>		
Entry Door	36" Wide FRP Constructed Door w/ FRP Door Frame, SS Hinges, FRP Drip Cover	2
Entry Door Hardware	Door Hardware, Entry Lockset, Lever With Stainless Hardware, Keyed, Grade 1, Corbin Russwin CL3351 NZD 626	1
Door Closer	Door Hardware, Hydraulic Closer With Hold-Open, Norton 8301H	1
Door Seal	Door seal, hollow bulb silicone, Pemko 303 D PK 84	2
Door Sweep	Door bottom sweep, dark bronze, aluminum with brush, Pemko 18062D NB	2
<b>Electrical - Lighting</b>		
Interior Light	Lighting, Interior: LED, 4', Vapor Tight Fixture, Lithonia XVML L48 5000LM MVOLT 40K 80CRI	3
Exterior Light	Lighting, Exterior: LED, 120V, 19W, 1017 Lumens, Photo Sensor, Lithonia TWS LED 1 50K 120PE	1
<b>Electrical - Load Center/Outlets</b>		
Load Center	Load Center TBD, estiamted at 120/230V single phase 125A	1
Breaker	Breaker, 15A, 1P, 120/240V, 10 kAIC, 1,800W, Eaton BR115	3
Breaker	Breaker, 20A, 1P, 120/240V, 10 kAIC, 2,400W, Eaton BR120	3
GFCI	Receptacle, Duplex, GFCI, 15A, 125V, 20A Feed-Thru, White, Leviton GFWT1-W w/ Weatherproof Carlon Cover and Gang Box	2
Toggle Switch	Switch, 20A, 120/277V, Leviton 1221-2W w/ Weatherproof Covers, Carlon E98TSCN or E9G2SSN	4
Wire/Conduit	Wiring, Typical 12 awg, PVC Conduit and Installation of Components	1
<u>Construction Note</u>	<u>Building will come with lighting, gfci(s) and HVAC wired to load center.</u>	
<b>Heating/Cooling/Ventilation</b>		

<b>HVAC System</b>	Marvair or Bard unit, dual 5 ton units with heat and economizer	2
<b><u>Construction Note</u></b>		
<b>Options</b>		
<b>Design Calculations</b>	Structural design calculations, sealed by PE	1
<b>Lead Time Estimate From Signed Submittals</b>		6 - 8 weeks
<b>Estimated Weight</b>		4380 lbs
	<b><u>Notes:</u></b> 1. The building will be manufactured to the above specifications. Only the items specifically listed are included. It is the responsibility of the customer to review this quote for accuracy and conformance with all related project documents and to contact Orenco Composites directly for revisions.  2. The lead time estimate provided is approximate and may vary based on demand at the time the order is placed. Lead time estimates represent the expected time from receipt of signed submittal drawings to the time of shipment. Lead time estimates are meant to reflect the manufacturing time requirements for the structure and do not include considerations for submittal procedures, freight and/or other processes.  3. The estimated weight provided shall be considered approximate. Actual structure weight may vary significantly based on the specific details of the quoted structure and the individual equipment provided within. It is the responsibility of the customer to contact Orenco Composites for an accurate weight estimate prior to handling the structure and/or estimating costs associated with such activities.	

## **Attachment #3**

**Updated Bid Form**  
**Base Bid Items**

Fulton ITB:

21ITB129828K-JAJ

Project:

Camp Creek WRF UV System Replacement

**BID FORM**

**BASE BID ITEMS (Revised 7-8-21 to Include VE Items)**

**1. LUMP SUM ITEMS**

1.1. UV SYSTEM UPGRADES	\$2,360,500.00
1.2. UV SYSTEM CANOPY	\$76,500.00
1.3. ELECTRICAL BUILDING	\$355,000.00
1.4. ELECTRICAL EQUIPMENT	\$416,000.00
1.5. 4160V SWITCH GEAR	\$592,000.00

**2. OWNER-DIRECTED ALLOWANCE**

2.1. CONTINGENCY	\$200,000.00
2.2. INSPECTIONS & TESTING	\$5,000.00
2.3. MISCELLANEOUS CONCRETE REPAIR	\$10,000.00
2.4. LANDSCAPING/GRASSING	\$10,000.00
2.5. Engineering Continuance	\$75,000.00

**BASE BID TOTAL (SUM OF ITEMS 1 AND 2)**

**\$4,100,000.00**

## **Attachment #4**

### **Subcontractor Utilization Summary**

**Camp Creek WRF UV Replacement - Exhibit C (Revised 7-8-21 to Include VE Items)**

Subcontractor Name	Address	Contact Name, Phone and Email	Ethnic Group	County Certified	Work to be Performed	Estimated Contract Value	
							Participation (%)
Anasteel Supply Company, LLC	2272 Mabros Industrial Pkwy Ellenwood GA 30294	Anna Cablik: 707-675-9501 tel@anasteel.com	WFBE	Yes	Rebar	\$ 7,349	0.18%
Baker Building Services	4205 1st Ave #300 Tucker, GA 30084	Zack Slabiak: 678-502-7176 zslabiak@bakerbldgservices.com	N/A	No	Painting	\$ 5,200	0.13%
Excel Electrical Technologies, Inc.	1990 Vaughn Rd. Suite 320 Kennesaw GA 30144	Russell Stover: 770-970-4108 Russell.Stover@excelelectrical.com	N/A	No	Electrical	\$ 946,582	23.09%
Mayer Electric Supply Co. Inc.	3405 4th Avenue South Birmingham, Al 35222	Nancy Goedecke: 770-447-6800 nancygoedecke@mayerelectric.com	WFBE	Yes	Electrical Apparatus Supply (2-nd tier)	\$ 338,000	8.24%
Global Controls Systems	3297 Millwood Trail SE Smyrna, GA 30080	Kishor Gandhi: 678-908-8392 kishor@globalcontrolsystems.com	WFBE	Yes	I&C	\$ 42,800	1.04%
Cantsink Manufacturing Inc.	71 1st Ave. NW Lilburn GA 30047	Jeff Schade: 404-271-5044 jeff@cantsink.com	N/A	No	Helical Piles	\$ 18,544	0.45%
						\$ -	0.00%
						\$ -	0.00%
						\$ -	0.00%
						\$ -	0.00%
<b>TOTAL PROJECTED UTILIZATION</b>						<b>\$ 1,358,475</b>	

**Subcontractor Percentage:**

**33.13%**

**Certified Firms Percentage:**

**9.47%**

**Department of Purchasing & Contract Compliance**

Mario Avery, MBA, MCA  
Contract Compliance Administrator

Suite 1168  
130 Peachtree Street, S.W.  
Atlanta, GA 30303  
[www.fultoncountygga.gov](http://www.fultoncountygga.gov)

Main: (404) 612-6300

August 18, 2020

Ms. Nancy C Goedecke  
MAYER ELECTRIC SUPPLY CO., INC.  
3405 4th Avenue South  
Birmingham, AL 35222-2300

Dear Ms. Goedecke:

The Fulton County Office of Contract Compliance has reviewed your application for Minority/Female Business Enterprise ("MFBE") recertification. Based on our evaluation of the information submitted, your firm has met the requirements for certification renewal.

Your firm's certification will last for a period of two (2) years beginning with the effective date of this letter. You may apply for recertification as a MFBE three months prior to the certification expiration date. Failure to recertify your company within six (6) months after certification has expired will require your company to repeat the certification process in its entirety. If at any time during your certification period there is a change in management, ownership or control of your firm, you are required to update your firm's profile. If your firm relocates during the certification period please update your profile as well. Failure to maintain accurate information on your firm may result in removal of your firm from the Minority/Female Business Enterprise (MFBE) Directory.

If you have any questions or require further assistance, please feel free to contact our office at (404) 612-6300. We wish you continued success in your business endeavors.

Sincerely,

Mario Avery  
Contract Compliance Administrator