

Fulton County COVID-19 Response Update

November 3, 2021
BOC Meeting

OVERVIEW

Incident Response Update

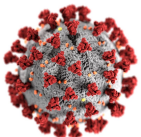
- Statistics
- Vaccination Response
- Mobile Vaccination Implementation

Reopening Update

- Vax or Test Initiative
- ERAP Phase II Update

2021 COVID Funding Update

- Update - COVID 19 Reserve
- American Rescue Plan Spend Updates

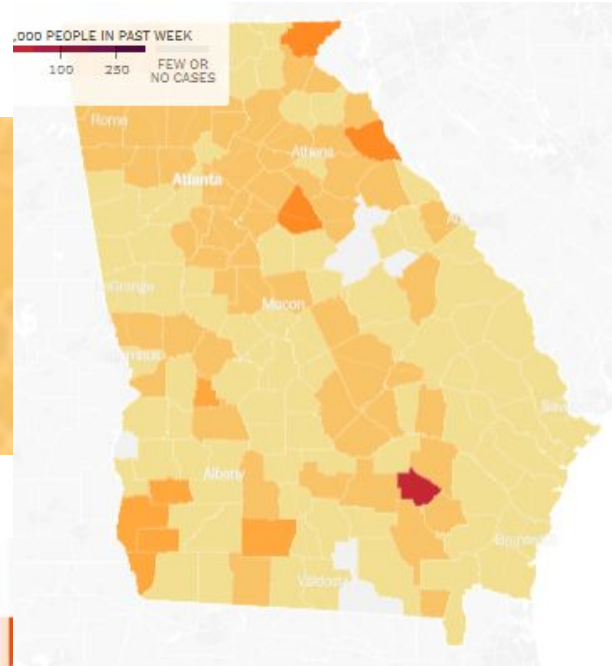
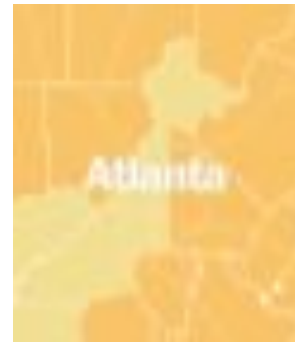
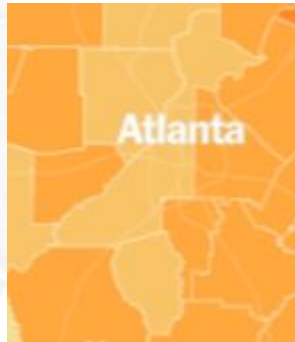
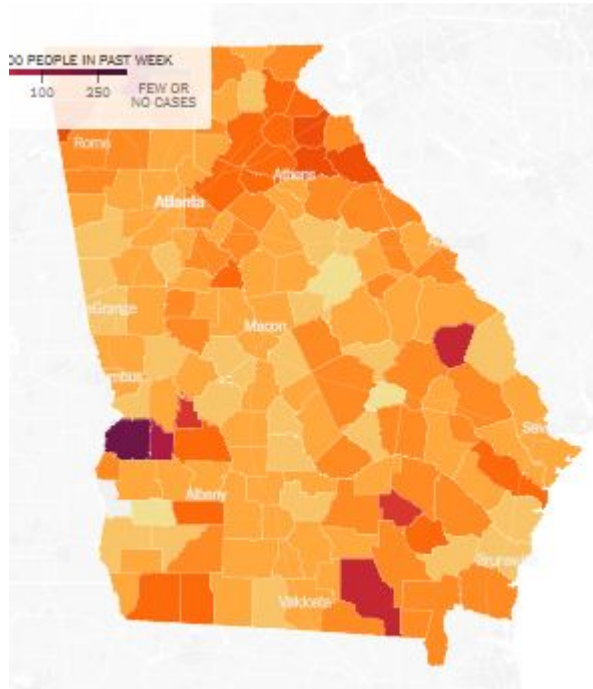


INCIDENT RESPONSE REVIEW

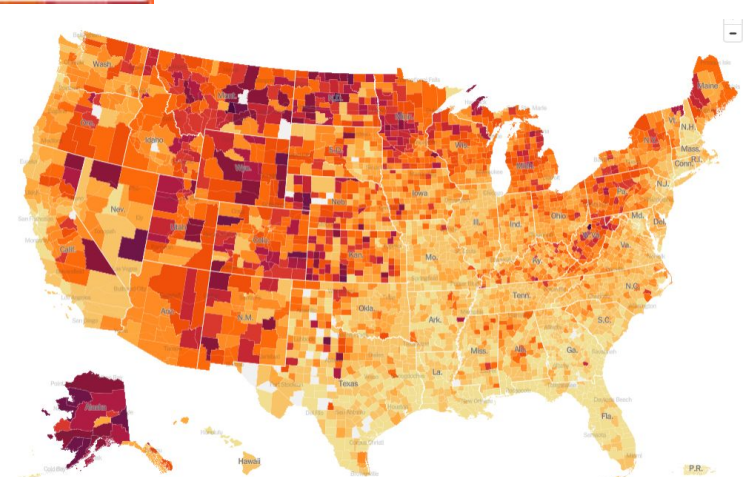
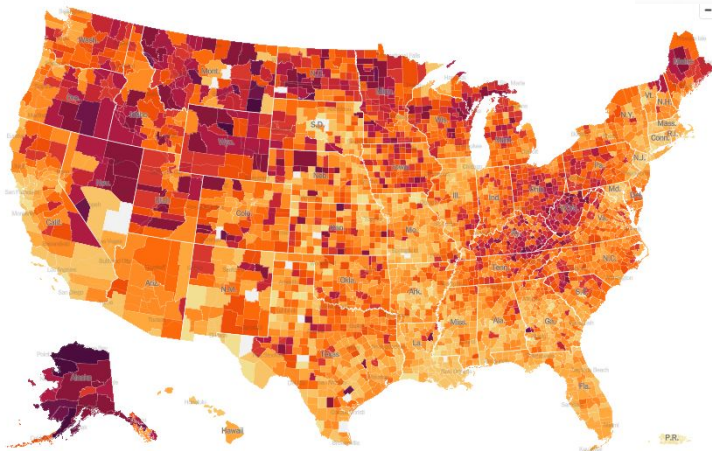
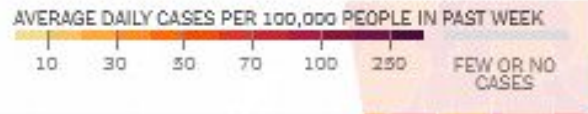
- The 7-day average for cases, hospitalizations, & % positives are all continuing a downward trend.
- The 7 day trend for deaths due to COVID-19 continues to plateau at approximately 4 deaths per day.
- Fulton County hospitals are still experiencing dangerous hospital room shortages, due to high volumes of non-COVID-19 admissions.
- COVID-19 patients on ventilators have decreased significantly from pandemic highs one month ago (120) to 24
- Two of the major indicators on the Fulton County scorecard are now green and two are yellow.

Incident Response Update (Heat Maps)

October 6th vs November 3rd

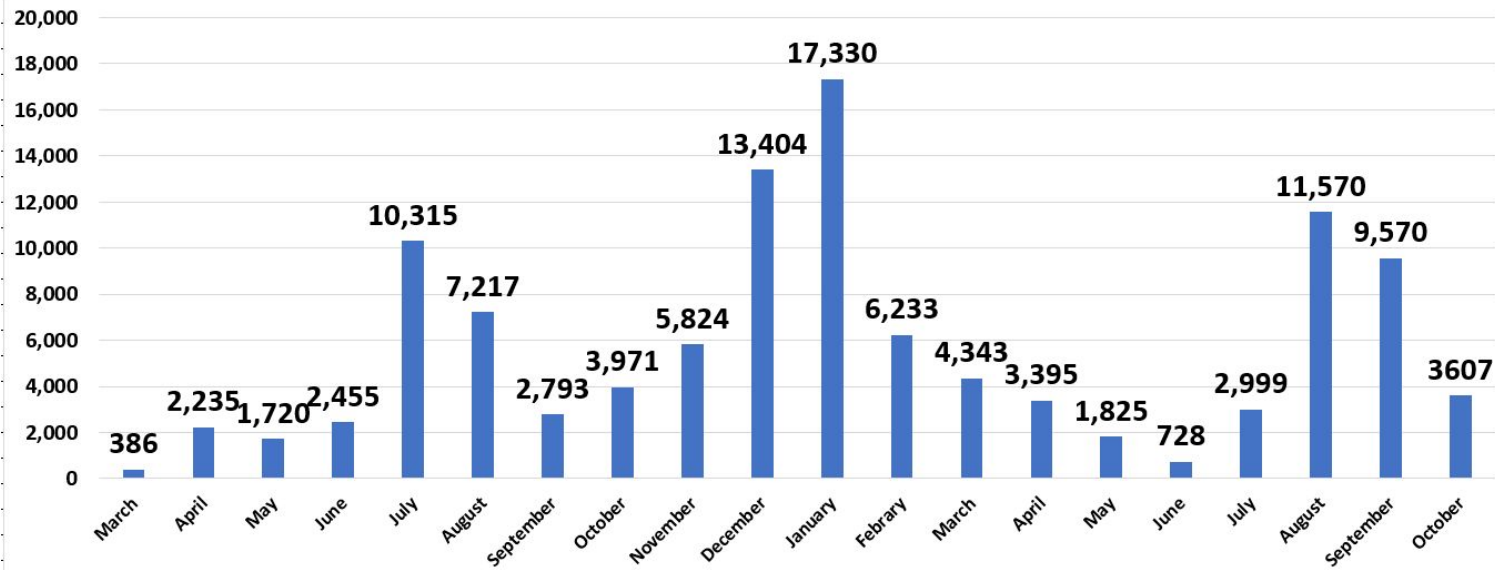


Hot spots

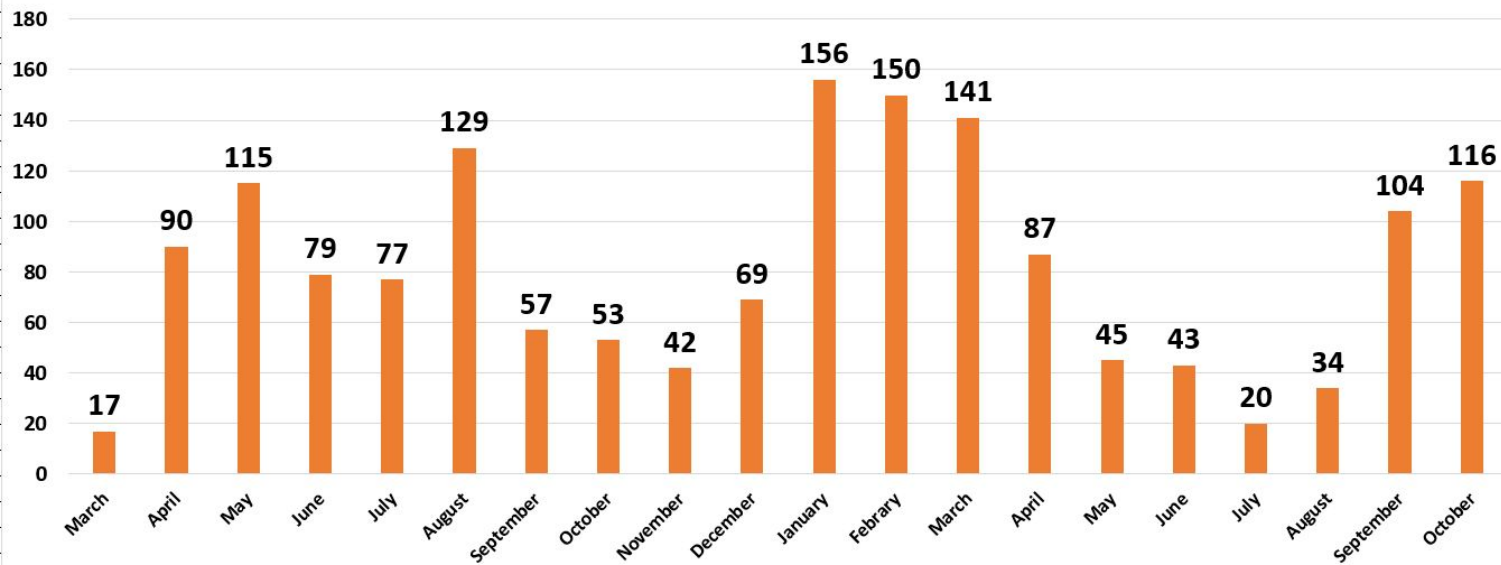


Incident Response Update Monthly Totals

Fulton County Cases by Month



Fulton County Deaths by Month



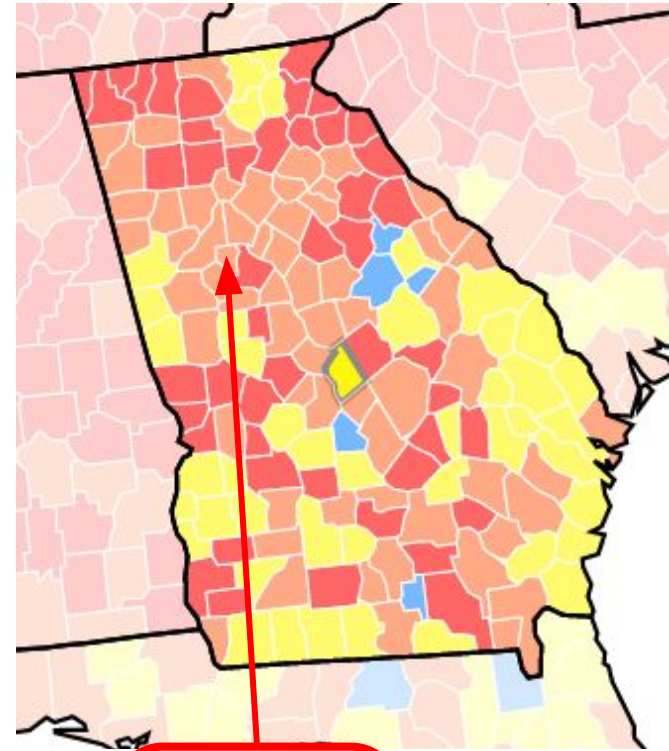
Incident Response Update risk level

How CDC measures the county level of community transmission

CDC looks at two numbers — total new cases and percent positivity — to determine the level of community transmission.

•**Total new cases** refers to a county's rate of new COVID-19 infections, reported over the past 7 days, per every 100,000 residents.

Percent positivity refers to the percentage of positive COVID-19 tests in a county over the past 7 days.



| Community Transmission Levels | Low Transmission | Moderate Transmission | Substantial Transmission | High Transmission |
|--|------------------|-----------------------|--------------------------|-------------------|
| Total new cases per 100,000 persons in the past 7 days | 0-9.99 | 10-49.99 | 50-99.99 | ≥100 |
| Percentage of NAATs that are positive during the past 7 days | 0-4.99% | 5-7.99% | 8-9.99% | ≥10.0% |

Incident Response Update



COVID-19 CASE COUNTS AND RATES BY CITY

| | Recent 14-day reporting period ¹ | Preceding 14-day reporting period | % Change from preceding 14 days (%) ² | 14-Day Incidence Rate ³ |
|---------------------|--|--------------------------------------|---|---------------------------------------|
| | <i>10/9-10/22</i> | <i>9/25-10/8</i> | | |
| Alpharetta | 53 | 83 | ↓ 36.1% | 80.5 |
| Atlanta | 556 | 847 | ↓ 34.4% | 121.2 |
| Chattahoochee Hills | <10 | <10 | - | 135.6 |
| College Park | 18 | 29 | ↓ 37.9% | 139.6 |
| East Point | 39 | 69 | ↓ 43.5% | 101.7 |
| Fairburn | 19 | 25 | ↓ 24.0% | 115.3 |
| Hapeville | 19 | 12 | ↑ 58.3% | 289.9 |
| Johns Creek | 64 | 96 | ↓ 33.3% | 77.6 |
| Milton | 43 | 42 | ↑ 2.4% | 104.1 |
| Mountain Park | 0 | 0 | - | 0.0 |
| Palmetto | <10 | <10 | - | 76.3 |
| Roswell | 80 | 104 | ↓ 23.1% | 86.2 |
| Sandy Springs | 80 | 140 | ↓ 42.9% | 74.0 |
| South Fulton | 135 | 207 | ↓ 34.8% | 125.7 |
| Union City | 27 | 61 | ↓ 55.7% | 100.6 |
| Unknown | 57 | 22 | - | - |

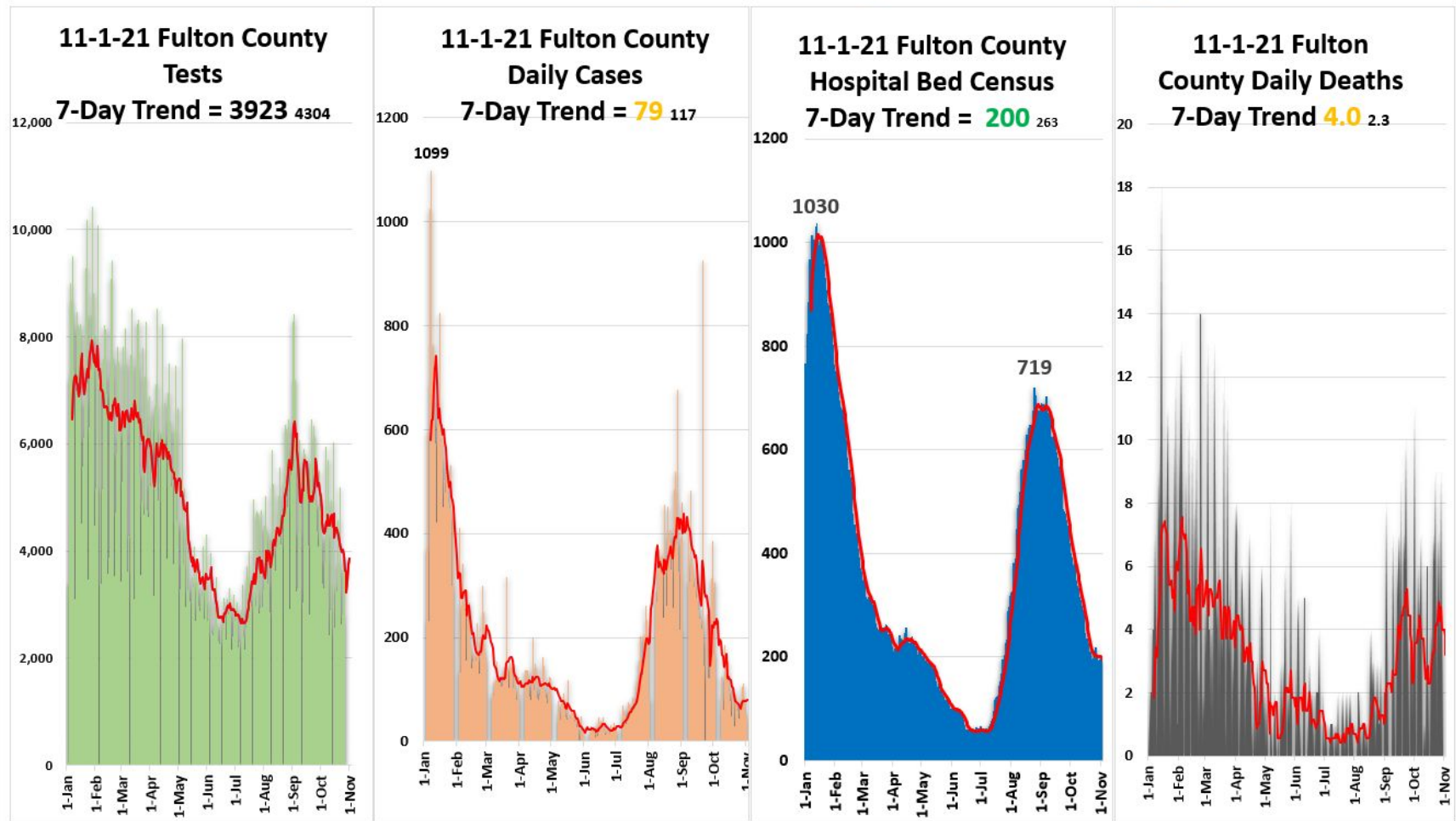
Incident Response Update



- **Fulton County COVID-19**

- 7-day average for cases is **79**, down 33% since the last BoC mtg.
- 7-day average for % positive is **3.0%**, down 115% since the last BoC mtg.
- 7-day average, Hospitalizations is **200**, down 24% since the last BoC mtg.
- 7 day average, for deaths is **4.0** , up 84% since the last BoC mtg.

Fulton County Dashboard 11-1-2021: New Tests = 3850 / New Cases = **49** / New COVID Census = **196** / New Deaths = 0



Incident Response Update



11/1/21 Fulton County COVID-19 Scorecard

| Metric | Status (7-day average) =* | Metric |
|---------------------------------------|--|---|
| Testing (Demand & Capacity) | * 3,923 ⬇️ | Current capability is 8,000 / day Daily Testing: over 2857 , 1428 - 2857 , less than 1428 |
| Testing (Results) | 24-48 hrs ➡️ | Time to receive results: 0 - 48 , 49 - 96 , over 96 |
| Cases | * 79 ₆₃ ⬆️ | Less than 20 , 20 - 74 a day , 75 to 249 , over 250 |
| Fulton positivity rate % + | * 3.0% _{6.0%} ⬇️ | Less than 1% , 1% - 5% , 5% - 10% , over 10% |
| Hospitalizations COVID census | * 200 ₂₄₂ ➡️ | Less than 50 , 50 - 200 , 201 - 349 , over 350 |
| Hospital Bed Availability | * 13.6% ⬆️ * 12.5% Adult | Open Beds: over 20% , 15% - 20% , Less 15% |
| Hospital CCU Bed Availability | * 16.0% ⬆️ * 15.4% Adult | Open CCU Beds: over 20% , 15% - 20% , less 15% |
| Hospital Vent Availability | * 56.6% ➡️ | Open Vents: over 25% , 15% - 25% , less 15% |
| COVID Deaths | * 4.0 _{4.9} ➡️ | Less than .25 , .25 - 2.5 , 2.5 - 5 , over 5 |
| Morgue census | * 75 ➡️ | Less Than 75 , 75 - 90 , over 90 |
| COVID Vaccine Administered Booster | 528,688 92% 3,039 boosters ⬇️ | More than 75% , 50% - 75% , less than 50% |

VACCINATION RESPONSE

- Fulton County fixed & mobile vaccination sites reached the 528,702 K vaccines administered mark.
- Fulton County mobile vaccination units have administered over 39.6K doses of vaccines.
- 4 mobile units will be at 18 locations this week.
- Vaccinations and approved boosters continue to be available at these fixed locations: Board of Health Clinics, 141 Pryor St, 4700 North Point Parkway, 5710 Stonewall Tell Rd, 3900 Aviation Cir NW
- Vaccine events with APS
 - Carver: vax and incentives = 40
 - Total incentives distributed at Carver \$3,100
 - Douglass High School: vax and incentives - 58
 - Total incentives distributed at Douglass \$4,650

Vaccination Response

GEORGIA

[Download Published Data](#)

VACCINES ADMINISTERED

ADMINISTERED

11,329,355

ADMINISTERED PER 100K

108,895

RESIDENTS VACCINATED

At Least One Dose

5,826,707

% At Least One Dose

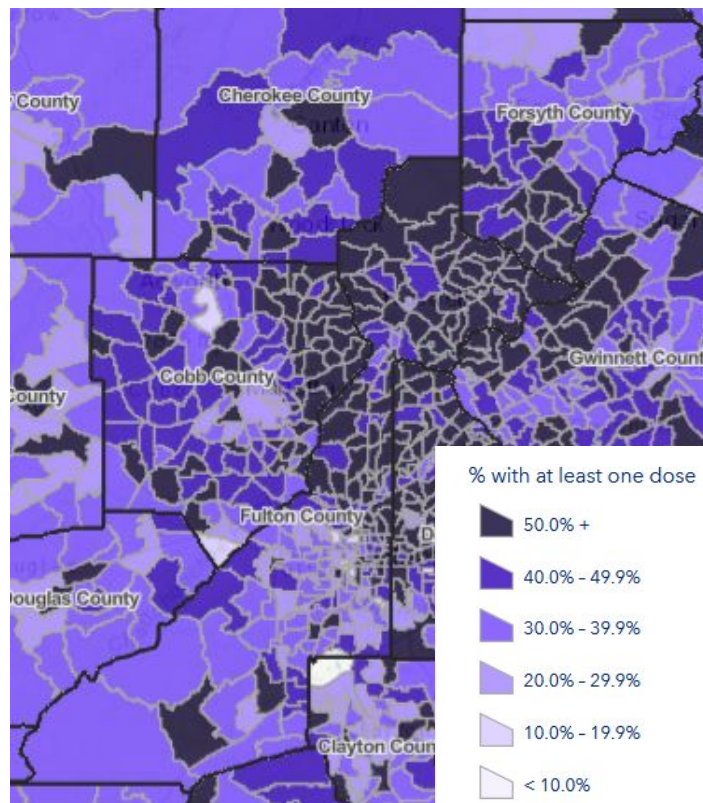
56%

Fully Vaccinated

5,188,930

% Fully Vaccinated

50%



- Totals are extracted from the DPH GRITS System
- Totals represent % of total population
- The Fulton County totals for those eligible for vaccination is: 69% one dose & 62% fully vaccinated

Fulton County

[Download Published Data](#)

VACCINES ADMINISTERED

ADMINISTERED

1,252,869

ADMINISTERED PER 100K

120,909

RESIDENTS VACCINATED

At Least One Dose

627,683

% At Least One Dose

61%

Fully Vaccinated

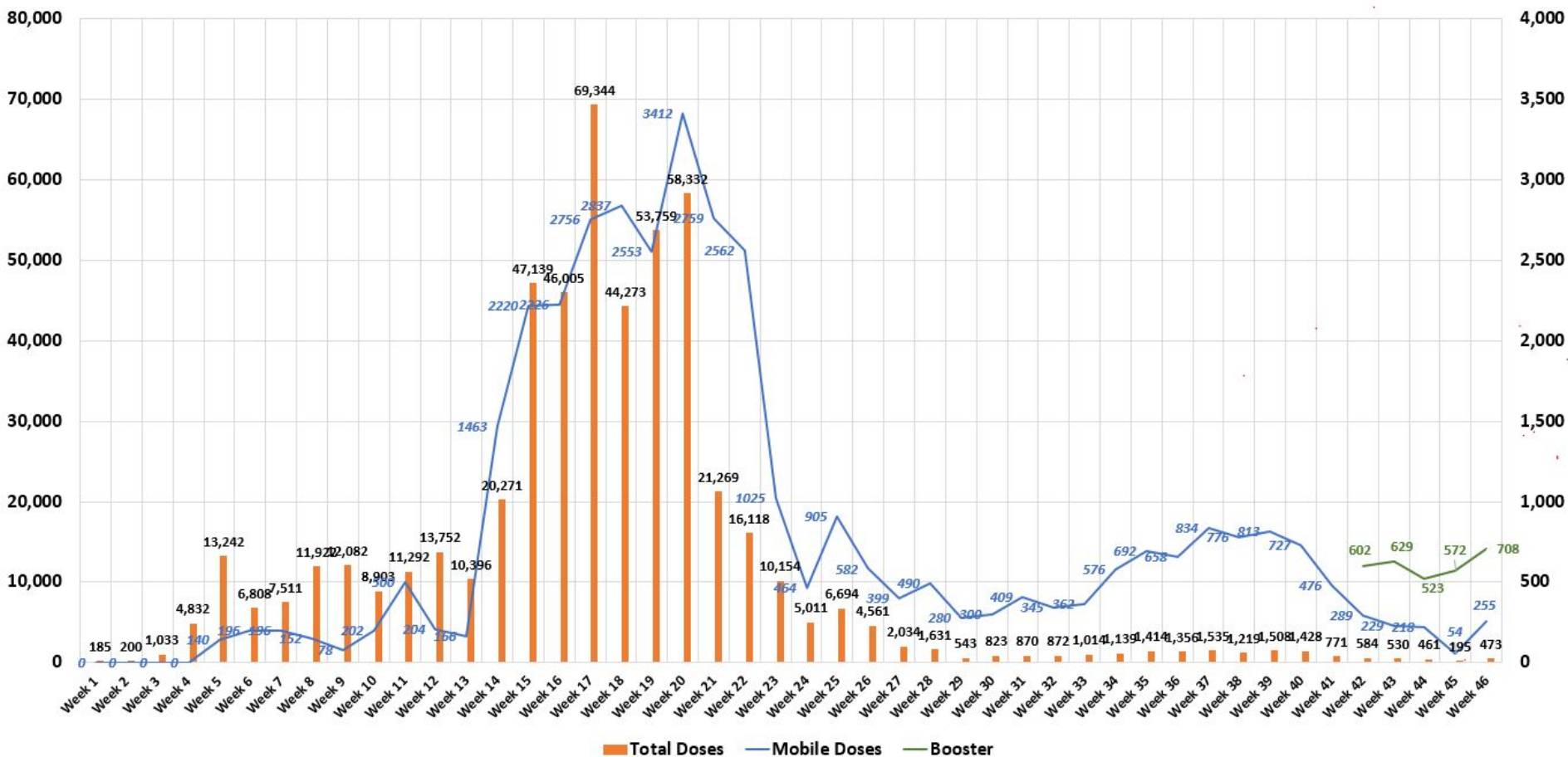
568,276

% Fully Vaccinated

55%

Vaccination Response

Through 10-24-21 Fulton County Vaccine 1st & 2nd dose Weekly Total & Weekly Mobile Total (5 % ratio)



Mobile Vaccine Response Update



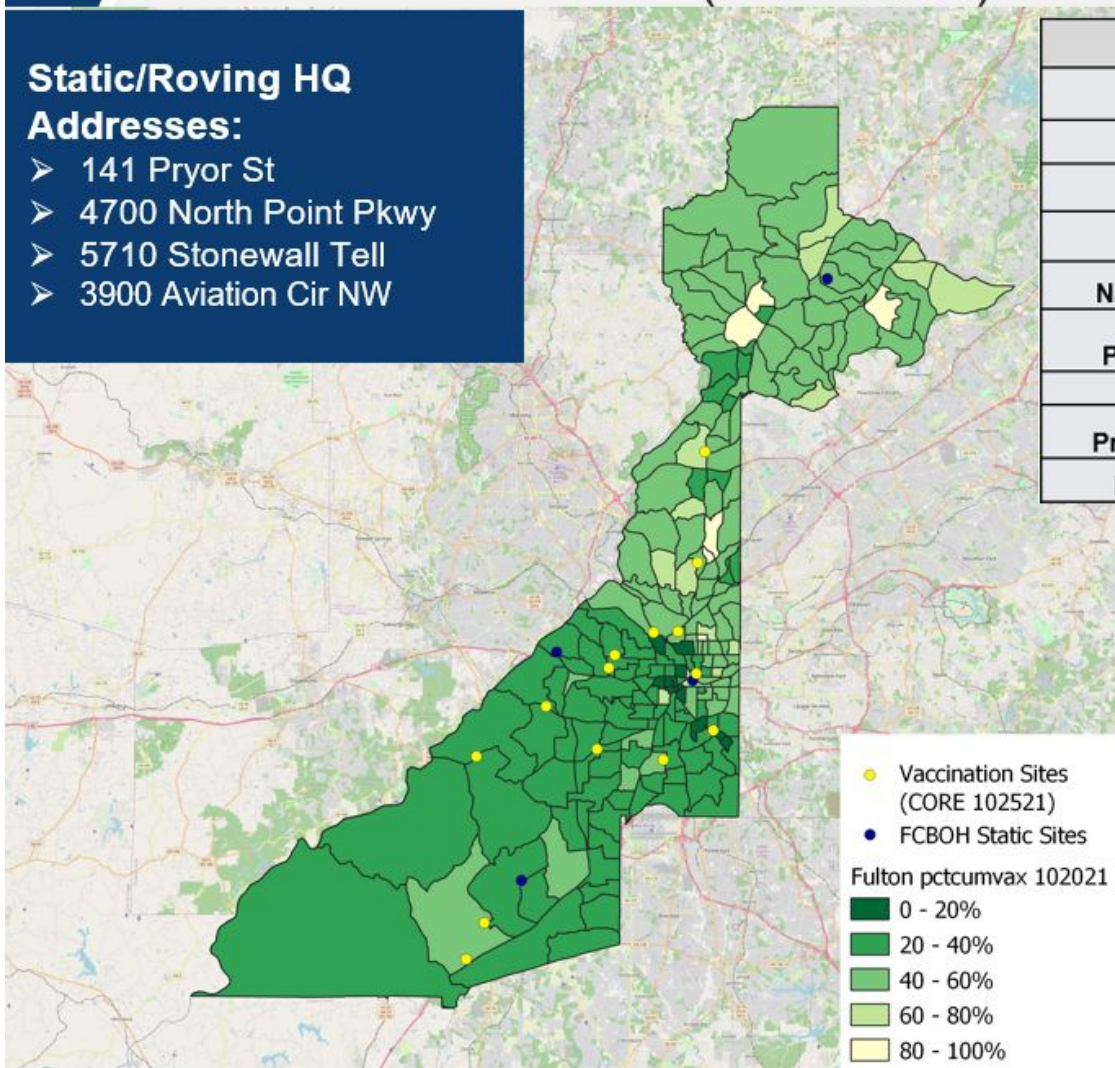
3

Fulton County Map of Mobile Vaccination Sites (6-1 - 10/31)

Static/Roving HQ

Addresses:

- 141 Pryor St
- 4700 North Point Pkwy
- 5710 Stonewall Tell
- 3900 Aviation Cir NW



| Race | | |
|------------------------------|--------|------------|
| | Number | Percentage |
| Black | 7152 | 79.29% |
| White | 1775 | 14.29% |
| Asian | 233 | 0.71% |
| Native American | 42 | 0% |
| Hawaiian or Pacific Islander | 18 | 0% |
| Hispanic | 1642 | 4.64% |
| Prefer Not to Say | 241 | 1.07% |
| No Response | 0 | 0% |

Number of vaccines administered = 11,104

Number of events supported = 879

Number of unique sites visited = 535

Vaccination Response

October 1st Vaccination Deployment Posture

- **4 Fixed locations (combined capacity up-to 900 Vax per day, as demand dictates):**
 - 141 Pryor St.
 - 4700 North Point Pkwy.
 - 5710 Stonewall Tell Rd.
 - 3900 Aviation Cir
- **4 Mobile Units (combined capacity 300 Vax per day) = up to, 20 events per week**
- **\$100 dollar incentives for 1st & 2nd doses, to be offered at all fixed sites, on November 3 & 6**

Path Forward

- **Look to expand incentive opportunities at both fixed locations and mobile units**
- **Micro target our vaccination efforts in census tracts with low vaccination rates**
- **Continue to look for creative ways to battle vaccine hesitancy with targeted advertising**



Mobile Vaccination: Sites this week

| Nov 01 | Nov 02 | Nov 03 | Nov 04 | Nov 05 | Nov 06 | Nov 07 |
|--------|----------------------------------|------------------------------------|---|---|--------------------------------------|--------|
| | Zion Hill Baptist Church | Mary Parker Foundation | Ben Hill UMC | Urban Recipe (Non-profit) | | |
| | Atlanta History Center - Midtown | Atlanta Marriott Marquis | The Iberian Pig (Restaurant)/ Sugo (Restaurant) | Community Assistance Center | Solidarity Sandy Springs Food Pantry | |
| | Elizabeth Baptist Church | Georgia State University - Atlanta | New Wine Christian Center | The Westin Atlanta Airport Hotel | | |
| | Atlanta Hawks Game | Mount Moriah Baptist Church | HOPE - Get Hip Get Connected | Cooks and Soldiers (Restaurant)/ Bar Mercado (Restaurant) | PoZitive2poSitive Amazing PrEP Race | |



TARGETED OUTREACH: CLOSING THE VACCINE EQUITY GAP



RACE

43.5% of Black residents have received at least 1 dose, compared to 59.1% of White residents

GEOGRAPHY

6 Census tracts within Fulton County have <20% residents with at least 1 dose.

AGE

59% of 20 - 24% year olds have received at least 1 dose, compared to 74.6% of 45 – 54 year olds

OUR APPROACH

ACCESS

- Community-based locations

INCENTIVES

- Gift Cards

EDUCATION

- Alive & In Color Campaign Site
- School-based

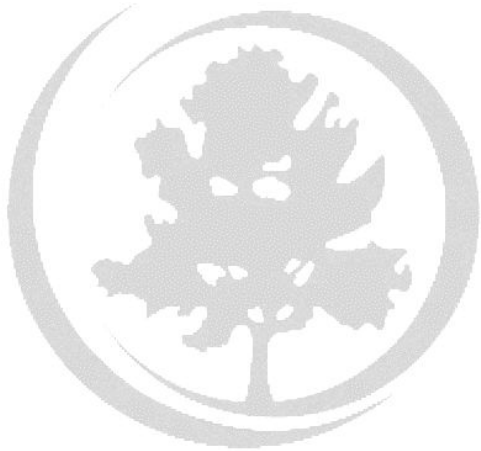
TRUSTED VOICES

Municipalities | Elected Officials | School Systems
Nonprofits | Media
Small Businesses | Community Orgs
Faith Partners
Youth Organizations



Questions?



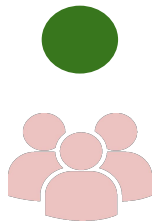


Fulton County Government Reopening Plan

Gating Criteria

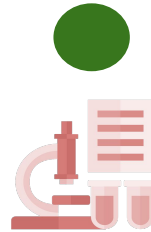
Reopening Indicators

CASES



Downward trajectory in the 7-day average of new positive tests within a 14-day period, and positivity rate below 5%

VAX OR TEST

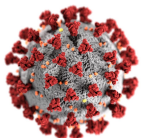


Ability to vaccinate employees to 80% goal and to test employees who choose alternative with results within 48-72 hours

EQUIPMENT



PPE and supplies for all employees interacting with public.



**Satisfy Before Proceeding to Phased Comeback*

COVID POSITIVE EMPLOYEES

| LAST 2 WEEKS | |
|------------------------|----------|
| DEPARTMENT | POSITIVE |
| SUPERIOR COURT-CLERK | 1 |
| SUPERIOR COURT-GENERAL | 1 |
| TAX ASSESSOR | 1 |
| GRAND TOTAL | 3 |

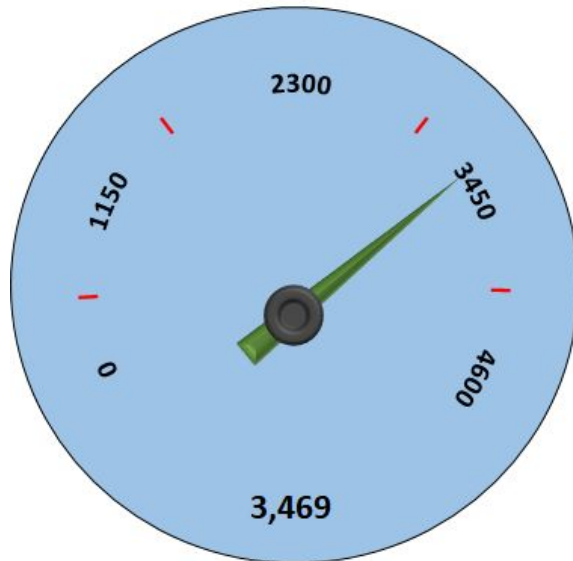
COVID POSITIVE EMPLOYEES

| CUMULATIVE | | | |
|------------------------|------------|---------------------------|----------|
| DEPARTMENT | POSITIVE | DEPARTMENT | POSITIVE |
| ARTS/COOPERATIVE EXT. | 1 | MAGISTRATE COURT | 3 |
| BHDD | 4 | MEDICAL EXAMINER | 4 |
| BOARD OF HEALTH | 28 | POLICE | 11 |
| BOARD OF COMMISSIONERS | 2 | PROBATE COURT | 6 |
| COUNTY ATTORNEY | 3 | PUBLIC DEFENDER OFFICE | 5 |
| COUNTY MANAGER | 5 | PUBLIC WORKS | 44 |
| COUNTY MARSHAL | 13 | PURCHASING | 3 |
| COMMUNITY DEVELOPMENT | 3 | REGISTRATION & ELECTIONS | 6 |
| DISTRICT ATTORNEY | 17 | SENIOR SERVICES | 9 |
| DREAM | 26 | SHERIFF | 5 |
| EMERGENCY MANAGEMENT | 2 | SOLICITOR GENERAL | 5 |
| EMERGENCY SERVICES | 42 | STATE COURT-ALL JUDGES | 3 |
| EXTERNAL AFFAIRS | 2 | STATE COURT-GENERAL | 6 |
| FINANCE | 9 | SUPERIOR COURT-ALL JUDGES | 4 |
| HUMAN RESOURCES | 2 | SUPERIOR COURT-CLERK | 53 |
| INFORMATION TECHNOLOGY | 5 | SUPERIOR COURT-GENERAL | 31 |
| JUVENILE COURT | 22 | TAX ASSESSOR | 29 |
| LIBRARY | 30 | TAX COMMISSIONER | 38 |
| GRAND TOTAL | 481 | | |

Return to Office Plan

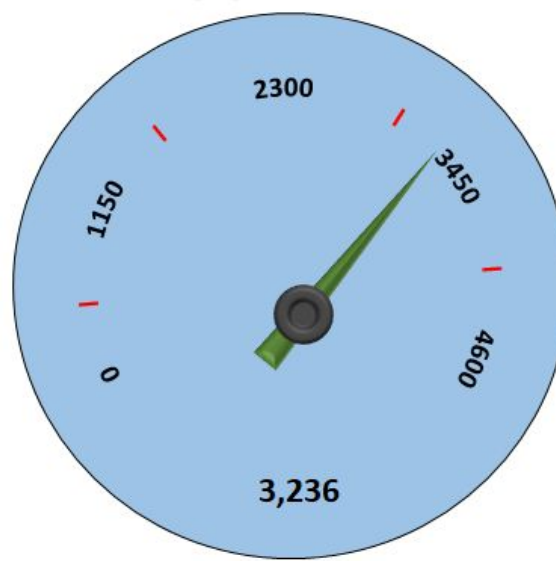
Employee Vaccination Incentive Program

Applications



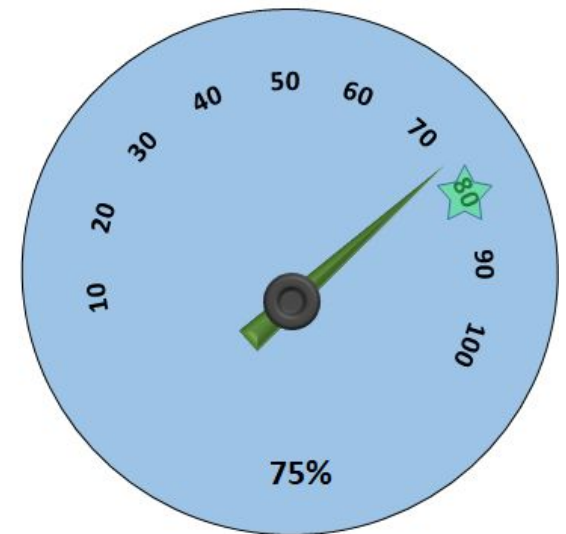
October 18th – 3,375
October 4th – 3,208
September 13th – 2,966
August 30th – 2,866
August 18th – 2,788
August 2nd – 2,709
July 12th – 2,560
June 14th – 2,291

Approved



3,045
2,979
2,772
2,624
2,526
2,484
2,353
2,102

Vaccination %



72%
70%
62%
59%
56%
55%
52%
47%

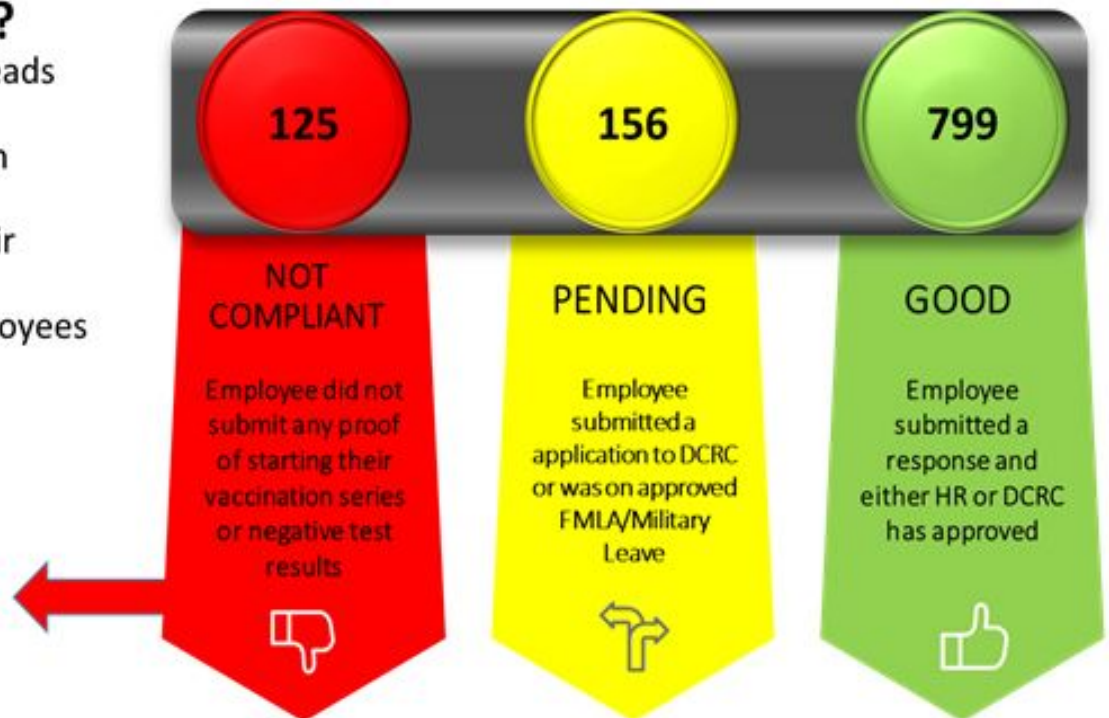
Employee Compliance with Vaccination & Testing Policy

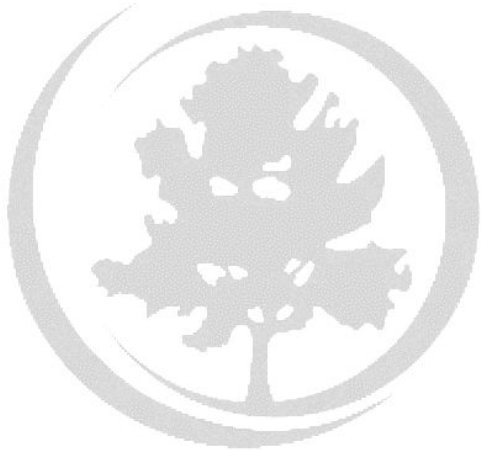
How have we educated the workforce about the policy?

- Distributed policy to Department Heads
- Educated via FulcoNews
- Educational session led by Dr. Paxton
- Created information portal
- Held meeting with managers on their responsibility.
- Emails weekly to unvaccinated employees with policy & link

| Suspension Status | # of Employees |
|-------------------|----------------|
| 1 Day | 70 |
| 5 Day | 30 |
| 10 Day | 25 |

1,080 Unvaccinated Employees





Fulton County Government

Emergency Rental & Mortgage Assistance Updates

Emergency Rental Assistance

Phase II

PROGRAM UPDATES

- REALLOCATION - TREASURY

- Guidance updated 10/27, and Deputy Secretary correspondence indicated, “Treasury will begin identifying excess funds for reallocation in mid-November.”
- Reallocation Priorities
 - Treasury will first prioritize requests from grantees serving jurisdictions in the same state where the excess funds were initially allocated.
 - When recaptured funds remain after accounting for same-state priority, Treasury will then prioritize grantees ... based on their expenditures of funds in order to keep money flowing to programs that are the most efficient in meeting the needs of American families.
 - Funds that are not distributed based on the first two priorities will be available in a single pool for reallocation nationwide, ... proportionally to grantees based on their relative need.

- REALLOCATION - STATE OF GEORGIA

- Meeting scheduled with the State DCA to discuss “Voluntary Reallocation”

Emergency Rental Assistance

Phase II

PHASE II - QUICK STATS

18,604 Applications initiated

9,828 Applications submitted

9,620 Applications adjudicated

Assistance Disbursed During Phase II

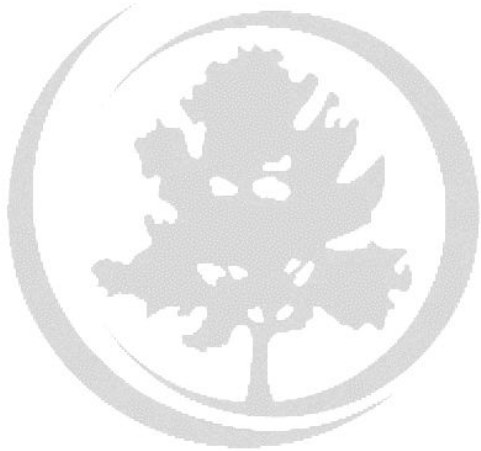
\$20.4M

Mortgage Assistance

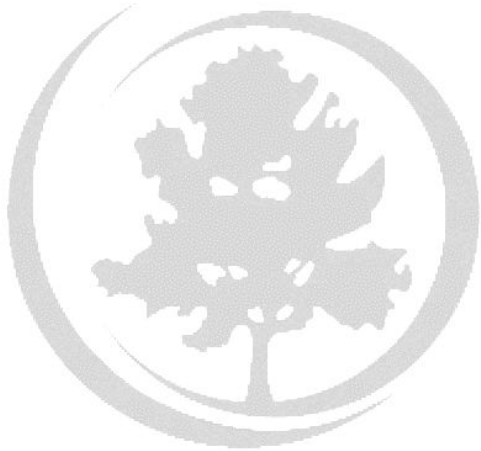
Georgia Administered - \$354M Statewide

MORTGAGE ASSISTANCE UPDATES

- Conversation with Treasury (10/26):
Beginning approvals for Mortgage Assistance. Two jurisdictions approved.
- Georgia spend proposal not yet approved.



QUESTIONS



Emergency Response Reserve & American Rescue Plan Act Funds Update

COVID-19: Recovery Funds Plan

Economic Recovery and
Operational Resiliency Plan

October 31, 2021



Consolidated Covid Response Plan

| | 10.15.2021 | Budget | 10.31.2021 |
|--|--|----------|--|
| | Operational Plan 100% FEMA Reimb | | Operational Plan 100% FEMA Reimb |
| <i>In Millions \$</i> | | | |
| EERF - General Fund | \$ 14.9 | - | \$ 14.9 |
| Communications | 2.0 | - | 2.0 |
| Child Care / Healthcare / Other | 1.3 | - | 1.3 |
| Payment to Employees | 6.6 | - | 6.6 |
| Information Tech - Virtual Support | 2.0 | - | 2.0 |
| 2020 Obligation | 3.0 | - | 3.0 |
| American Rescue Act | 216.9 | - | 216.9 |
| Health Infrastructure | 17.3 | - | 17.3 |
| Pandemic Proof County Facilities | 28.0 | - | 28.0 |
| Day Porters / Cleaning | 4.1 | - | 4.1 |
| Child Care / Healthcare / Other | 1.5 | - | 1.5 |
| Premium Pay for Employees | 3.4 | - | 3.4 |
| PPE- County Employees | 5.0 | - | 5.0 |
| Court Backlog Project | 75.0 | - | 75.0 |
| Information Tech - Virtual Support | 8.0 | - | 8.0 |
| Safety Net Services - CSP | 8.0 | - | 8.0 |
| Long Term Revolving Loan Program | 5.2 | - | 5.2 |
| Food Insecurity | 6.1 | - | 6.1 |
| Job Training | 2.7 | - | 2.7 |
| ERAP 2 & High Need | 25.0 | - | 25.0 |
| ERAP -1 and 2 Additional Operational Costs | 8.6 | - | 8.6 |
| Testing Vaccination | 17.4 | - | 17.4 |
| Vaccine Incentive Program | 1.7 | - | 1.7 |
| Consolidated Appropriations Act | 18.0 | - | 18.0 |
| ERAP 1 | 18.0 | - | 18.0 |
| FEMA Related Expenses | \$ 32.8 | - | \$ 32.8 |
| Projected Annual Uses | \$ 282.6 | | |
| Reserve | \$ 31.3 | | \$ 31.3 |

| 10.15.2021 | | 10.31.2021 | | | |
|--------------|------|-----------------|--------------|----|------|
| Expenses | | | | | |
| YTD Expenses | | Expense Changes | YTD Expenses | | |
| \$ | 10.4 | \$ | 0.1 | \$ | 10.5 |
| | 1.5 | | 0.1 | | 1.6 |
| | 0.5 | | - | | 0.5 |
| | 6.6 | | - | | 6.6 |
| | - | | - | | - |
| | 1.8 | | 0.0 | | 1.8 |
| | 26.2 | | 9.1 | | 35.3 |
| | - | | - | | - |
| | 0.4 | | - | | 0.4 |
| | 0.7 | | 0.1 | | 0.7 |
| | 0.3 | | 0.0 | | 0.3 |
| | 3.4 | | - | | 3.4 |
| | 1.5 | | 0.2 | | 1.7 |
| | 1.6 | | 0.6 | | 2.1 |
| | 0.4 | | - | | 0.4 |
| | 6.3 | | 0.4 | | 6.7 |
| | - | | - | | - |
| | 0.1 | | - | | 0.1 |
| | - | | - | | - |
| | 7.6 | | 5.8 | | 13.3 |
| | 3.7 | | 2.1 | | 5.8 |
| | 0.4 | | - | | 0.4 |
| | 0.0 | | 0.0 | | 0.0 |
| | 17.1 | | 0.2 | | 17.3 |
| | 17.1 | | 0.2 | | 17.3 |
| | 19.2 | | 0.7 | | 19.9 |
| \$ | 72.9 | | 10.1 | \$ | 83.0 |

Cash Flow Projections – COVID 19 Response

| Uses of Funds | | 2021 | 2022 | 2023 | 2024 | Total |
|--|---|----------|----------|---------|--------|----------|
| A | EERF - General Fund | 14.9 | - | - | - | 14.9 |
| B | American Rescue Act | 86.3 | 76.5 | 51.5 | 2.6 | 216.9 |
| C | Consolidated Appropriations Act | 18.0 | - | - | - | 18.0 |
| D | FEMA Related Expenses | 32.8 | | - | - | 32.8 |
| Projected Annual Uses | | \$ 152.1 | \$ 76.5 | \$ 51.5 | \$ 2.6 | \$ 282.6 |
| Sources of Funds | | 2021 | 2022 | 2023 | 2024 | Total |
| A | EERF | 14.9 | 16.4 | | | 31.3 |
| B | American Rescue Act | 128.4 | 103.4 | | | 231.8 |
| C | Consolidated Appropriation Act | 18.0 | | | | 18.0 |
| D | FEMA Reimbursement at 100% over 2 years | 6.9 | 25.9 | | | 32.8 |
| Projected Annual Sources | | \$ 168.2 | \$ 145.7 | \$ - | \$ - | \$ 313.9 |
| Cash Balance EOY - 100% FEMA Reimbursement | | 16.1 | 85.3 | 33.9 | 31.3 | 31.3 |
| Cash Balance EOY - 50% FEMA Reimbursement | | 12.7 | 68.9 | 17.5 | 14.9 | 14.9 |

Emergency Rental Assistance

ERAP -1

Funded - Consolidated Appropriations Act

Received - Mid/January 2021

| <i>in Millions \$</i> | Allocation | Received by FC | YTD Expense |
|-----------------------|------------|----------------|-------------|
| Regular | \$18.0 | \$18.0 | \$17.3 |

Expense does not include outstanding POs

ERAP -2

Funded - American Rescue Plan Act

Received - Mid/May and Mid/October 2021

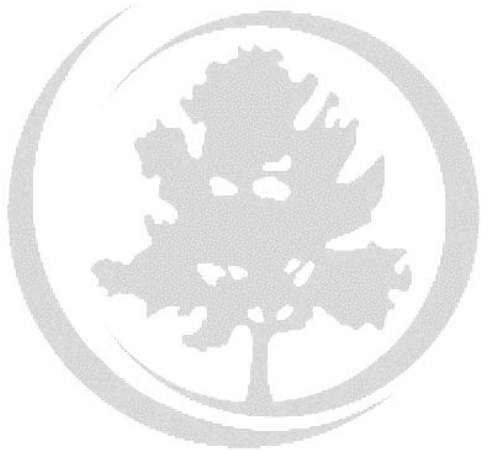
| <i>in Millions \$</i> | Allocation | Received by FC | YTD Expense |
|-----------------------|------------|----------------|-------------|
| Regular and High Need | \$24.9 | \$24.9 | \$13.3 |

ARPA - Admin. Supplement

County Allocation of ARPA
funding for Administration

| | | | |
|--------------|---------------|---------------|---------------|
| | \$8.6 | \$8.6 | \$5.8 |
| Total | \$51.5 | \$51.5 | \$36.4 |





QUESTIONS