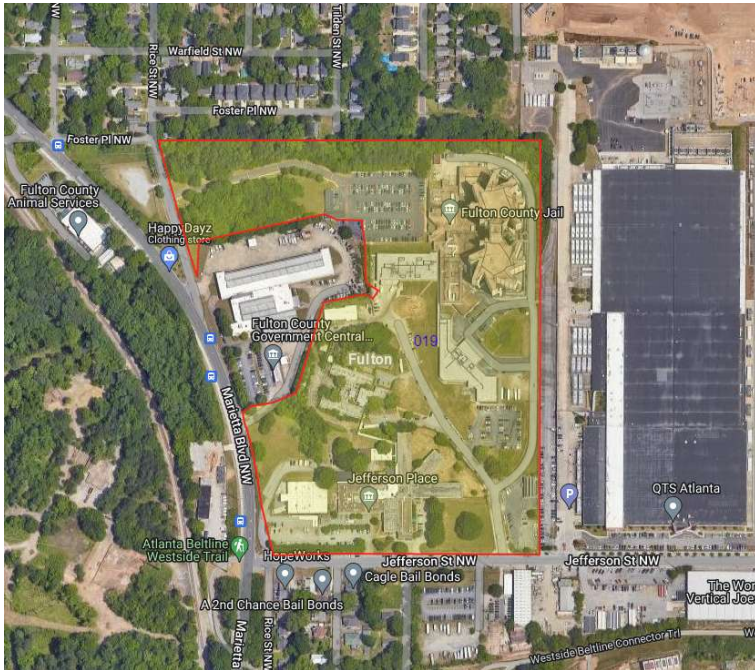




JEFFERSON STREET #3 - NORTHWEST (BLACK) 115 KV TRANSMISSION LINE

LAND DEPARTMENT

1101 JEFFERSON STREET NW



Subject Property

- 1101 Jefferson ST NW
(Fulton County Jail)
- Parcel Identification No. 14
0113 LL0121
- 32.86 Acres
- Easement Acres
Approximately 2.6

1101 JEFFERSON STREET NW



Obstacles

- Proposed route takes under consideration the location of the propane tank and back-up generator on the property.
- Route also avoids the steep and unbuildable terrain on the northernmost part of the property.

1101 JEFFERSON STREET NW



Path Clearing

- The required tree-clearing will expose the jail property to the neighborhood directly to the north of the campus.
- Georgia Power's External Affairs Group is putting together an action plan to mitigate any opposition from the community to include active two-way communication and a possible vegetation filling of the affected areas.
- While permanent dwellings or structures (including trees) over 15' in height are not permissible, there are plenty of items that are. These include but are not limited to landscaping, paving (parking), and fencing.