

Exhibit A

2026 COUNTYWIDE DISASTER DEBRIS MANAGEMENT PLAN



**FULTON
COUNTY**

**Countywide Disaster Debris Management Plan
Fulton County, Georgia**

Table of Contents

Promulgation Statement	3
Purpose and Scope	6
Purpose	6
Scope	7
County Overview	7
Disaster Conditions	9
Priorities	10
Concept of Operations	11
Operations Overview	11
Annual Actions	12
Immediately Prior to an Incident	12
Response operations	13
Recovery	13
Coordination and Completion of the “Emergency Push”	13
Implementing Debris Collection and Processing Operations.....	14
Resource/ Mutual Aid Requests	15
Site Approval.....	16
Site Approval Process.....	16
Responsibilities	17
Attachment One- Currently Designated Priority Roadways.....	19
Attachment Two- Initiating Temporary Debris Management Sites	21
Attachment Three- Location of Temporary Debris Management Sites	23

**Countywide Disaster Debris Management Plan
Fulton County, Georgia**

Promulgation Statement

The following 2025 Countywide Disaster Debris Management Plan provides a framework in which the county can perform their respective functions during a disaster or national emergency.

The Countywide Disaster Debris Management Plan was prepared in accordance with State coordinated procedures as well as Federal guidance. This plan supersedes any previous Debris Plans and has been reviewed and approved by the Director of the Atlanta-Fulton County Emergency Management Agency. It will be reviewed and recertified annually.

Approved: _____ Date: _____

Joseph Barasoain, Director

Approved: _____ Date: _____

Dick Anderson, County Manager

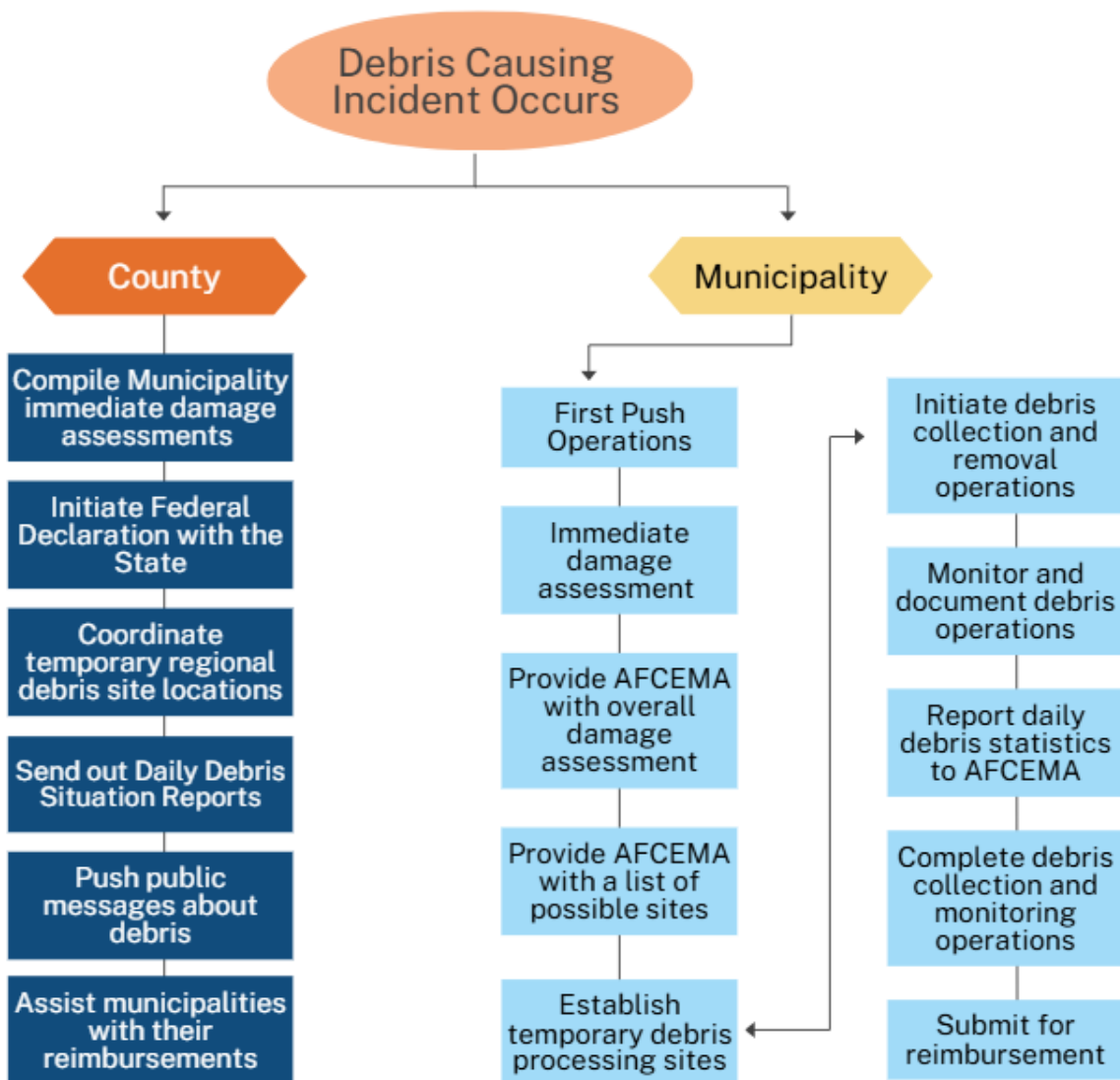
Purpose and Scope

Purpose

The purpose of the countywide debris plan is to support effective and efficient management of disaster-generated debris throughout Fulton County, Georgia. This plan is intended to be a comprehensive, cooperative, interjurisdictional approach to prepare for and implement debris management operations following any major disaster.

The plan establishes the policies controlling local government actions for debris management and defines a concept of operations that will be utilized countywide when necessary. This plan also defines responsibilities for debris management operations and plan implementation.

PROCESS OF DEBRIS MANAGEMENT



Countywide Disaster Debris Management Plan Fulton County, Georgia

Scope

The scope of this plan is defined as follows:

- This plan is an integral component of the Fulton County Local Emergency Operations Plan (LEOP), and will only be implemented, as necessary, upon implementation of the LEOP and activation of the County Emergency Operations Center (EOC).
- This plan applies to all local government jurisdictions in Fulton County. Additionally, it applies to any autonomous countywide agency, regional authority, or special district responsible for the maintenance of:
 - Public lands
 - Natural waterways or human-made canals
 - Public roadways or other public facilities in Fulton County
- The plan will be implemented when disasters generate significant amounts of debris across multiple jurisdictions in the County. Fulton County may also implement all or part of the plan if an impacted jurisdiction is overwhelmed by the volume or type of debris and needs support from the county or the state.
- This plan applies to all disaster debris operations, regardless of cause, and types of disaster-generated debris, including vegetative, construction, demolition, household, contaminated, and hazardous materials.
- The plan addresses disaster-generated debris that must be removed and disposed of. This includes debris that:
 - Poses a threat to public health and safety
 - Could cause further damage to public and private property
 - Would significantly hinder the economic recovery of affected communities

County Overview

Fulton County covers 526.63 square miles, with a mix of urban and suburban areas across its 15 municipalities. The county's western border runs 80 miles along the Chattahoochee River. It has the largest population in Georgia with about 1,090,000 residents. The County is divided into three sections. North Fulton consists of the cities of Alpharetta, Johns Creek, Milton, Mountain Park, Roswell, and Sandy Springs. The city of Atlanta encompasses the center portion. Chattahoochee Hills, College Park, East Point, Fairburn, Hapeville, Palmetto, South Fulton, and Union City make up South Fulton. These three distinct sections are unique in their own way and require a different level of coordination in the event of a debris event.

The following characteristics of Fulton County and its municipalities are influential to the need for a countywide debris plan and the operational concepts it must incorporate:

- Fulton County's debris plan must account for its complex jurisdictional makeup. The county's 15 municipalities, regional authorities, and special districts have different resources and capabilities for handling disaster debris. Following a major disaster such as a hurricane, all these entities will need to clear and dispose of debris simultaneously. Therefore, close cooperation and coordination—both before and after an event—are crucial for efficient debris management. This can only be achieved through advanced planning by all entities and a commitment to

**Countywide Disaster Debris Management Plan
Fulton County, Georgia**

using a common, standardized approach across the entire county. Given the large number of organizations involved in debris management, effective countywide operations will require each jurisdiction, regional authority, and special district to develop strong plans within the area of their responsibility.

- As Fulton County's population and development grow, the availability of land suitable for debris management sites is shrinking. Identifying, certifying, and communicating those sites in advance allows for greater interjurisdictional coordination. Organizations within Fulton County responsible for post-disaster debris management, requires interjurisdictional operations. Establishing common operational concepts, documentation, and information sharing countywide will allow for a more effective and efficient response.
- Temporary debris management sites are necessary in or near the impacted areas to allow for collecting and sorting different types of debris, reducing the volume of debris through means such as grinding or incineration, and preparing the debris for final disposal.
- Reducing the roadway distance between debris origin and temporary debris sites shortens the travel time of trucks transporting debris and allows for a regionalized approach making debris management operations more effective.
- Debris management operations following major disasters must be accomplished within parameters and restrictions defined in state and federal regulations. This is especially applicable to events that receive presidential declarations of disaster, when local governments and other not-for-profit entities become eligible for federal reimbursement of specific disaster-related expenses pursuant to the Stafford Act. Such federal reimbursement is available for debris management programs implemented in accordance with applicable regulations and requirements. These regulations are complex, frequently updated or modified, and often subject to interpretation in view of the characteristics of the specific event. To maximize federal reimbursement for debris management operations in Fulton County, representatives of local governments must remain knowledgeable of the most current regulations and their expected interpretation.

Disaster Conditions

Following a disaster, the situation regarding debris management in Fulton County is likely to have the following characteristics:

- Substantial amounts of debris are present immediately after the disaster, blocking roadways, access to critical facilities, interfering with emergency operations, and causing other health and safety problems. The disaster scenario likely to generate the largest volume of debris across the county would be a hurricane or tornado, which could result in large volumes of vegetative and structural debris.
- The initial action, commonly referred to as an “emergency push” opens roadways by pushing debris to the side of the roadways, creating space wide enough for emergency vehicles to pass. “Priority routes” into critical facilities such as hospitals and fire stations, are cleared first. After completion of the emergency push, debris from roadway rights-of way and public property would be collected to minimize health, safety, and fire hazards. Each jurisdiction is responsible for creating a map of their priority routes.
- Identification of temporary debris management sites for processing, volume reduction, and preparation for final disposal, would follow completion of the emergency push. Multiple locations maybe required countywide dependent on which municipalities are impacted. These sites would be managed by individual cities.
- Public information and education following a major disaster will be needed regarding debris separation, removal from private and public property, and collection schedules. Timely communication informing the public about procedures, as well as regular status updates will be needed to manage public concerns around debris.
- Local public works departments may be overwhelmed by the volume and/or type of debris, both during the “emergency push” and in completing the collection and removal process. All municipalities are encouraged to contract with large and/or multiple vendors for assistance with debris collection and removal.

**Countywide Disaster Debris Management Plan
Fulton County, Georgia**

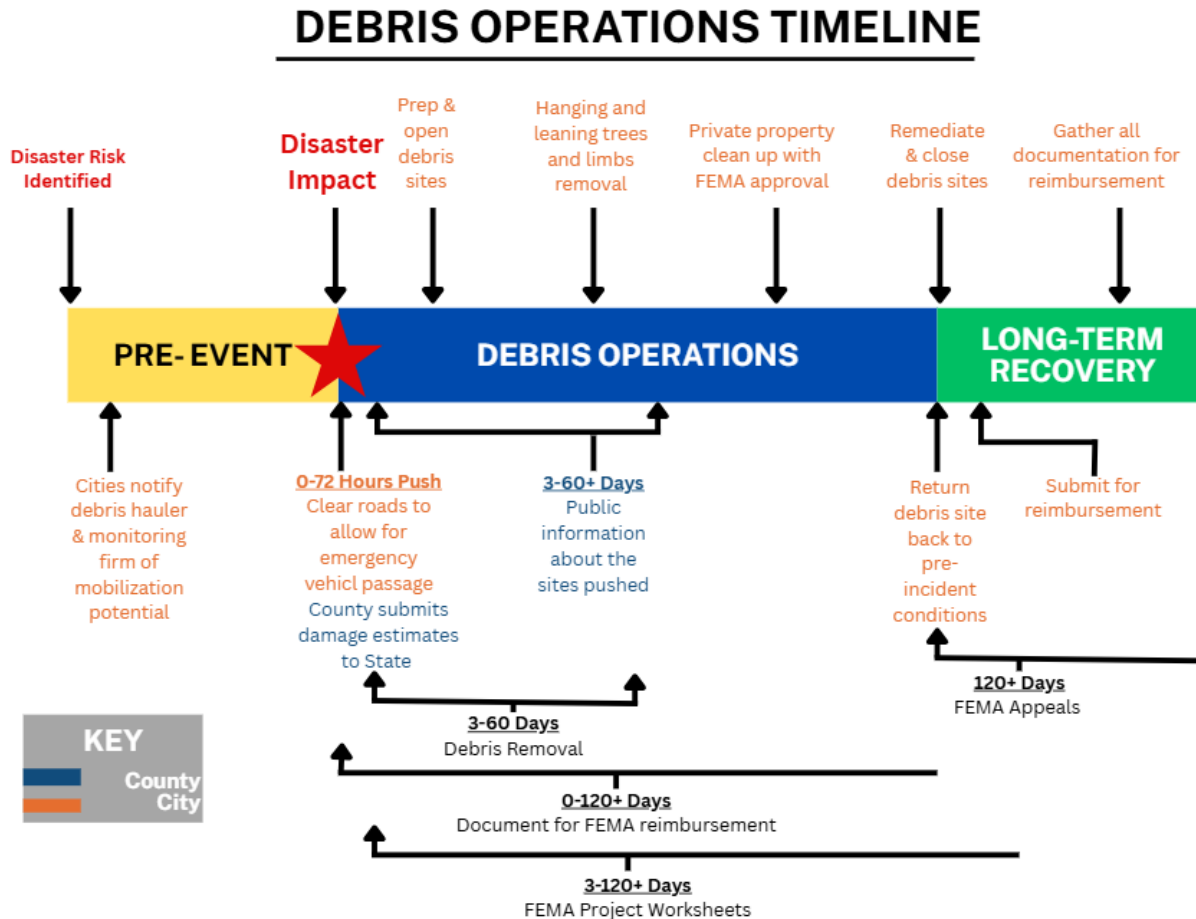
Priorities

The signatories to the countywide debris management plan have agreed that the following priorities will be used to guide debris management operations on both a countywide basis and within each jurisdiction:

- Operations to protect public health and safety will be given the highest priority. Debris management operations will not endanger the health and safety of individuals engaged in debris collection, transport, handling of debris, or to the public adjacent to debris transportation routes, temporary debris management sites, or debris disposal sites.
- Operations to ensure and/or restore the continuity of local government and protection of vital community infrastructure will be the next highest priority.
- Operations to protect and/or prevent additional damage to public property will be the next highest priority.
- Operations to protect valuable and irreplaceable environmental resources will be the next highest priority.
- Operations to restore and enhance normal economic activity in the affected communities will be the next highest priority.

Concept of Operations

This section describes the concept of operations that will be used to maintain and implement the countywide debris management plan. The section addresses the operations overview, the resource request process, and the site approval process.



Operations Overview

This section defines the operations that will be implemented pursuant to the plan. The operations are defined as the following:

- Annual actions
- Immediately prior to an incident
- Response
- Recovery

The operations described below are intended to be implemented with flexibility and to be adjusted to the specific needs of the debris planning and plan implementation process as they may change through time.

**Countywide Disaster Debris Management Plan
Fulton County, Georgia**

Annual Actions

This section defines the operations that will be completed annually by December 31st, to rapidly implement debris management operations in the event of a disaster.

The Fulton County Emergency Management Agency will complete the following:

- Gather and review recent changes to state or federal rules, regulations and/or guidance that would influence debris management operations in Fulton County.
- Host annual debris management training for all municipalities and external partners to include; review of the countywide plan, submittal process for initial plan and updates.
- Review any activations of the countywide debris management plan during the preceding year and define any modifications to the plan indicated.
- Review annual jurisdictional updates as well as any changes in demographics, local government organizations, or characteristics of Fulton County and make updates to the countywide plan as needed.
- Maintain the master list and map of potential sites and share them with stakeholders when possible.
- Engage in additional debris management planning & preparedness activities when needed.

Each Municipality will complete the following:

- Complete initial/annual update of it's debris management plan and submit to Fulton County Emergency Management Agency by December 31st.
- Meet annually with debris monitoring contractor and share any updates to the debris management plan or temporary debris management sites with the county emergency management.
- Train key personnel and exercise debris management plan if needed.

Immediately Prior to an Incident

Operations for those major disasters characterized by having a watch and warning period (hurricanes, tornadoes, etc.) will include the following:

The Fulton County Emergency Management Agency, will ensure that the following have occurred:

- Disseminate weather updates from the National Weather Service when applicable, using multiple systems as needed.
- Draft public information & emergency instructional materials for distribution if needed.
- Confirm the availability of temporary debris management sites with the municipalities throughout the County, and send the list of possible sites to DNR for approval.

Each Municipality will complete the following:

- Monitor information channels regarding anticipated incident impacts and potential for debris management.

**Countywide Disaster Debris Management Plan
Fulton County, Georgia**

- Communicate potential impacts with leadership and all departments responsible for implementing the municipal debris management plan.
- Prepare and preposition resources necessary for the “emergency push” in protected locations to support response operations.
- Enact jurisdiction’s debris management contractor/s as needed, including pre-incident notifications.
- Document any significant pre-incident conditions that may impact debris operations during response.
- Confirm temporary debris management sites throughout the city and share those locations with Fulton County Emergency Management.

Response operations

Response operations at the time of an incident will include, but not necessarily be limited to, the following:

The Fulton County Emergency Management Agency, will ensure that the following have occurred:

- Activate the Fulton County EOC.
- Process resource requests from municipalities as response and “emergency push” actions are in progress.
- Maintain situational awareness and information sharing with external and internal partners regarding response and “emergency push”
- Coordinate with the municipalities and state as to which temporary debris sites will be operational.
- Request direct federal assistance for debris management from the State pursuant to FEMA recovery strategy RS-2006-2, if necessary.

Each Municipality will complete the following:

- Establish contact with Fulton County Emergency Management Agency when they have activated their debris management plan.
- Complete preliminary damage assessment to identify location, volume and type of debris generated and impact to priority routes.
- Communicate initiation of “emergency push” for priority routs with internal and external stakeholders including County EOC.

Recovery

This phase consists of activities that will start once conditions are safe to operate and will last until months after.

Coordination and Completion of the “Emergency Push”

The “emergency push” or 72-hour response operations encompasses the period that impacts began through the time that roadways are cleared of debris allowing access for emergency response vehicles. Should an incident receive a federal declaration, debris management operations in the first 72 hours may be reimbursable through FEMA. It is

**Countywide Disaster Debris Management Plan
Fulton County, Georgia**

critical that all debris management response including time for equipment and personnel are documented accurately and in detail to meet reimbursement criteria.

The Fulton County Emergency Management Agency, will ensure that the following have occurred:

- Maintain situational awareness and communication with jurisdictional liaisons regarding “emergency push” operations.
- Respond to resource requests for assistance with priority routes or “emergency push” in a timely manner.
- Coordinate and support County efforts to provide supplemental resources if available to complete the emergency push.
- Prepare for transition to debris collection and hauling throughout the county.

Each Municipality will complete the following:

- Implement its debris management plan including the “emergency push” and priority routes identified in their plan.
- Communicate any unmet needs to the County EOC for assistance.
- Determine when the emergency push has been completed within their jurisdiction and inform the county EOC.
- Prepare for transition to debris collection and hauling in the county.

Implementing Debris Collection and Processing Operations

Following the initial 72 working hour period, debris management operations in the affected jurisdictions would be transitioning from the emergency push to debris collection, hauling, processing, and disposal. The length of time for this phase of debris management operations can vary from a few weeks to a few months, depending on the type of incident. Fulton County Emergency Management will provide coordination and support until operations are completed.

Temporary Debris Management Site Preparation (Municipal Level)

After a review of the availability and suitability of the Temporary Debris Management Site, the debris removal contractor can begin site preparation. As part of the preparation the following action items are recommended to compile baseline information:

- Photograph the Site: Digital photos should be taken to capture the state of the site before debris reduction activities begin.
- Photos should be updated periodically throughout the project to document the progression of the site.
- Record Physical Features: Records should be kept detailing the physical layout and features of the site. Examples to document in detail would include existing structures, fences, landscaping, etc.
- Historical Evaluation: The past use of the site should be researched and documented. Issues related to historical or archeological significance of the site should be cleared with the state historical preservation agency.
- Sample Soil and Water: If possible and deemed necessary, soil and groundwater samples will be taken before debris reduction activities begin. Samples will help

**Countywide Disaster Debris Management Plan
Fulton County, Georgia**

ensure the site is returned to its original state. Typically, soil and groundwater samples should be analyzed for total Resource Conservation and Recovery Act (RCRA) metals, volatile organic compounds, and semi-volatile organic compounds using approved U.S. Environmental Protection Agency (EPA) methods.

Debris monitoring ensures that debris removal and disposal activities are completed in compliance with environmental standards, contract obligations, and in the best interest of the residents. Municipalities are strongly encouraged to work with debris monitoring firms.

Conduct Meetings/Briefings with Key Personnel

Regular coordination meetings between key municipal personnel, debris removal contractors, and monitoring representatives; should be scheduled. Information to be shared for coordination would include:

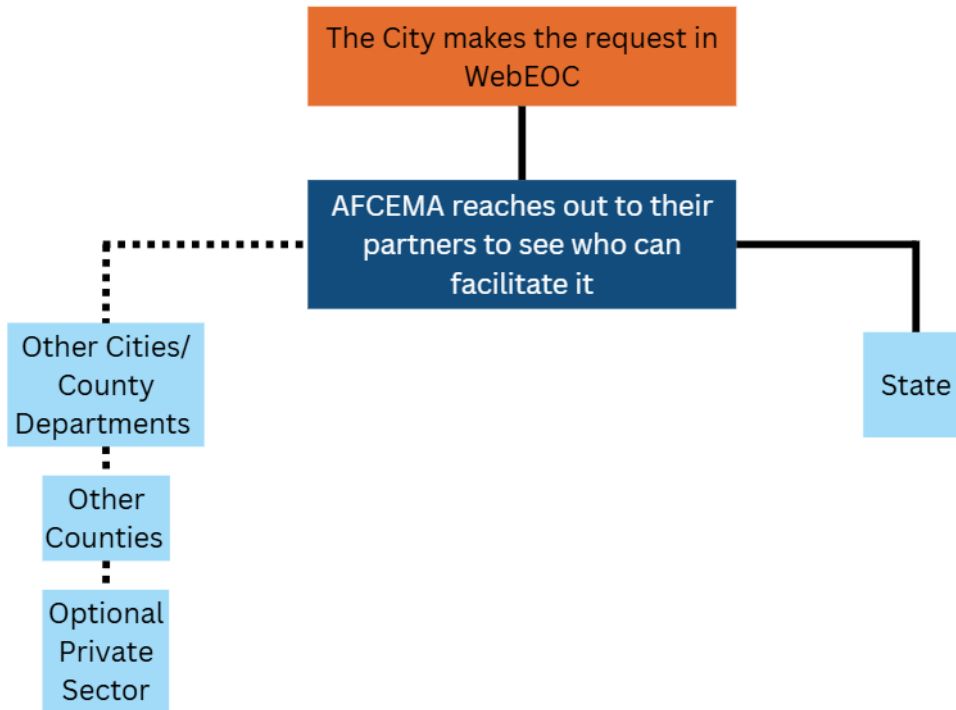
- Objectives
- Operational progress
- Road clearance data or maps
- Debris clearance data or maps
- Debris site data and statistics

Resource/ Mutual Aid Requests

The resource request process is standardized through the County. Once a municipality has reached or exceeded their capabilities, they enter a resource request into WebEOC. The County EOC will then reach out to other cities or County departments, then to other surrounding counties, then to the state to help fulfill the request. The County EOC will coordinate with the municipal contact in regards to the status of their request.

**Countywide Disaster Debris Management Plan
Fulton County, Georgia**

RESOURCE/ MUTUAL AID REQUEST PROCESS



Site Approval

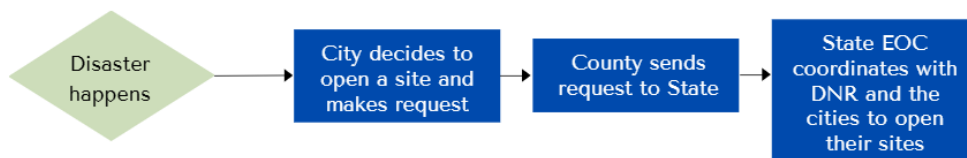
Pre-identified temporary debris management sites may also be certified as suitable for this purpose. As stated elsewhere in this plan, temporary debris management sites will be identified annually in the individual debris management plans of each participating entity.

All primary and alternate sites selected for debris management and reduction must be approved by the Georgia Department of Natural Resources (DNR). All sites will be approved according to its intended use.

Site Approval Process

After a debris incident has occurred, a city may need to open up a debris site. They would submit a site request to the County EOC via WebEOC. The County will coordinate that request with the state. Once approved, the State of Georgia’s Department of Natural Resources (DNR) works with the cities to get their sites approved.

SITE APPROVAL PROCESS



Responsibilities

This section defines the responsibilities of Fulton County agencies, other jurisdictions, and external organizations for the maintenance, improvement, and implementation of this plan.

Operational Responsibilities

The Fulton County Emergency Management Agency will have the following operational responsibilities:

- Ensure the integration of this plan and its supporting procedures into the operation of the Fulton County EOC.
- Maintain this plan, document all updates in a timely fashion, and distribute as needed.
- Prepare advanced public information regarding the debris management process in Fulton County.
- Provide coordination with after-action reports following the implementation of this plan; Integrate improvement actions into other County plans or procedures as needed.
- Facilitate communication between municipalities and other agencies with regards to availability of non-government temporary debris sites for intergovernmental agreements.

The Fulton County municipalities will have the following operational responsibilities:

- Develop a jurisdictional/agency specific debris management plan. Submit the plan to the Atlanta- Fulton County Emergency Management Agency for incorporation into the countywide plan.
- Complete all debris management and monitoring contracts for actions within their jurisdiction and ensure the adequacy of jurisdictional contracted debris management support.
- Lead, manage, and coordinate the process for pre-certification of the City's temporary debris management sites.
- Develop and maintain necessary procedures, checklists, rosters, operational guides, required for the activation, operation, and demobilization of collection sites.
- Plan, coordinate, and implement interjurisdictional actions necessary to ensure efficient and effective communication and data exchange during operations (computerized systems necessary for processing of the standardized load ticket, etc.).
- Designate and train department personnel for staffing of key positions.
- Monitor availability, capacity, and costs of disposal sites, from temporary removal through final disposal.
- Complete annual review and after-action reports after activation to ensure the plan meets the ever-changing needs of the municipality as well as variety of debris impacts.

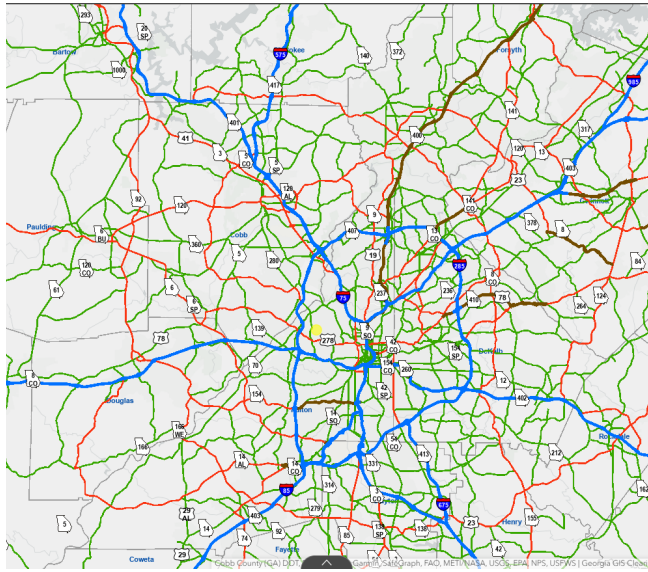
**Countywide Disaster Debris Management Plan
Fulton County, Georgia**

- Incorporate the debris management plan and its implementation in the city wide Emergency Operations Plan to ensure timely activation.
- Provide timely updates regarding debris management response to the Fulton County EOC for smooth coordination.
- Take other actions as necessary for effective and efficient debris management operations within the jurisdiction's areas of responsibility.

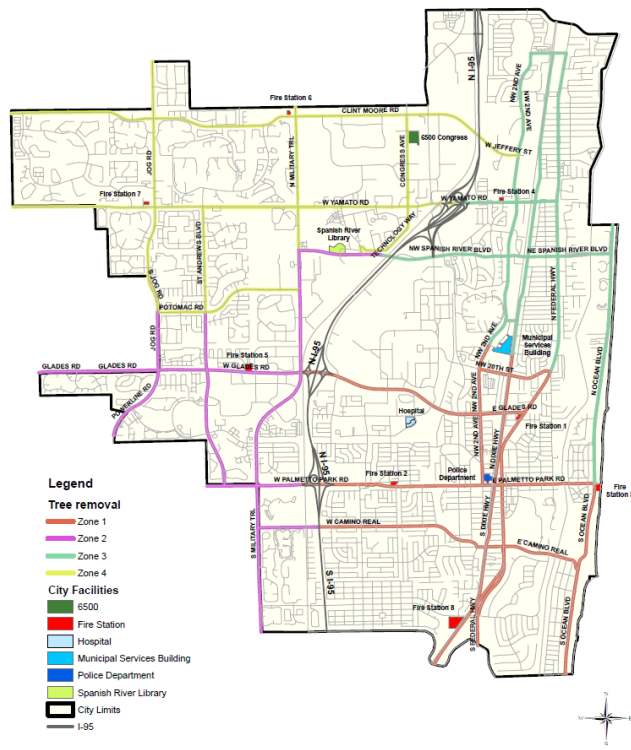
Attachment One- Currently Designated Priority Roadways

Countywide Disaster Debris Management Plan Fulton County, Georgia

***Here we would have maps for each city and maybe each section. The maps would show the city vs state maintained roadways, hospitals, police stations, fire stations, and shelters. The city maps would also show their primary and secondary road clearing streets. See two examples below.



-Example



-Example

Attachment Two- Initiating Temporary Debris Management Sites

**Countywide Disaster Debris Management Plan
Fulton County, Georgia**

A. **A tool to assess/screen potential TDMS in Fulton County**

- **Area:** It should be at least 10 acres, preferred 15 acres, 25+ acres optimum.
- **Geographical Location:** Strategically distributed/placed throughout Fulton County. It shall allow debris to be removed from the ROW quickly making the operation much more efficient. Reducing the drive time from the collection point to the off-loading site allows crews to spend more time collecting debris than transporting debris.
- **Access and Traffic Flow:** The site should be as close to major traffic corridors as possible. Acceleration/deceleration lanes on approach roads to TDMS. Ingress and egress that will remove trucks from normal street traffic. Ingress lanes that will allow for 25 trucks to stage before reaching the Inspection Tower. Traffic flow on site must be circular entering and exiting at the same point.
- It should be able to process between 10 and 15 hauls per hour
- **Neighborhood Proximity:** It should be located away from densely populated residential districts, schools, commercial, and offices.
- **Topography:** It must be high and dry. Reasonably flat terrain requiring minimal fill material. Good natural drainage for rainwater
- **Preparation/Vegetation:** Site should easily and quickly be convertible. It should be clear of native vegetation. Minimal tree and/or vegetative growth
- **Miscellaneous:** It must be fenced and lighted for night operations. Available power utility.
- **Environmental Considerations:** Ground water, surface water bodies, proximity to environmentally sensitive land (for example, wetlands), well field, check prior history of occupation or land use, sampling of soil/water, vegetation survey, and so on.

B. **Site-certification of Pre designated Temporary Debris Management Sites**

This following defines the site-certification including environmental requirements of pre- designated Temporary Debris Management Sites (TDMS).

- **Look into how to submit a temporary debris site for approval

Attachment Three- Location of Temporary Debris Management Sites

**Countywide Disaster Debris Management Plan
Fulton County, Georgia**

We would create a countywide map of all the approved temporary sites. This would help us get an area wide view of where we can open if needed