



CEO REPORT

Atlanta
BeltLine, Inc.
Board of
Directors
Meeting

June 9, 2021



@atlantabeltline



@atlantabeltline

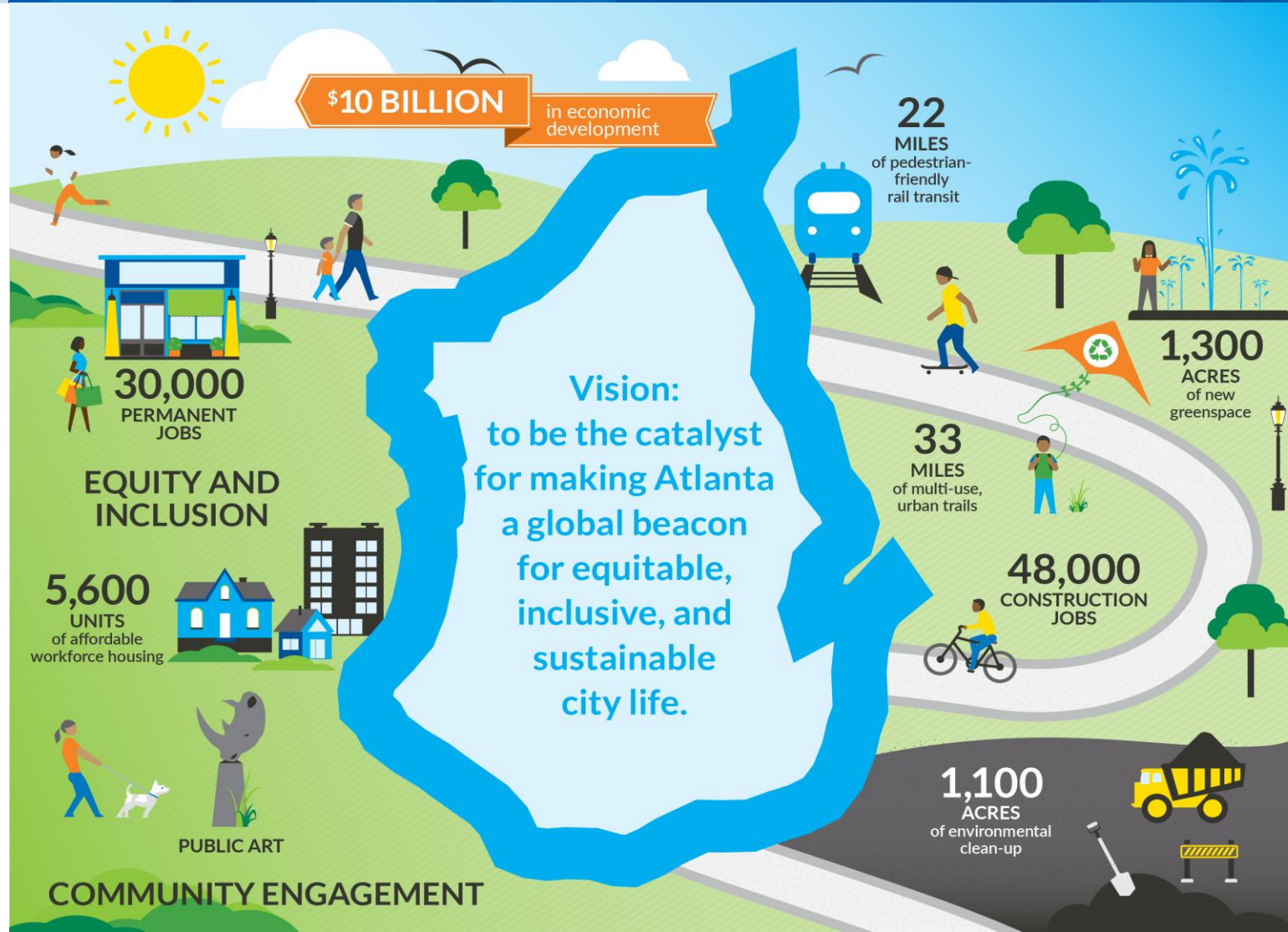


@atlantabeltline





ATLANTA BELTLINE VISION





AFFORDABLE HOUSING

Atlanta BeltLine
Legacy Resident
Retention
Program
approved 26
homeowners.





AFFORDABLE HOUSING

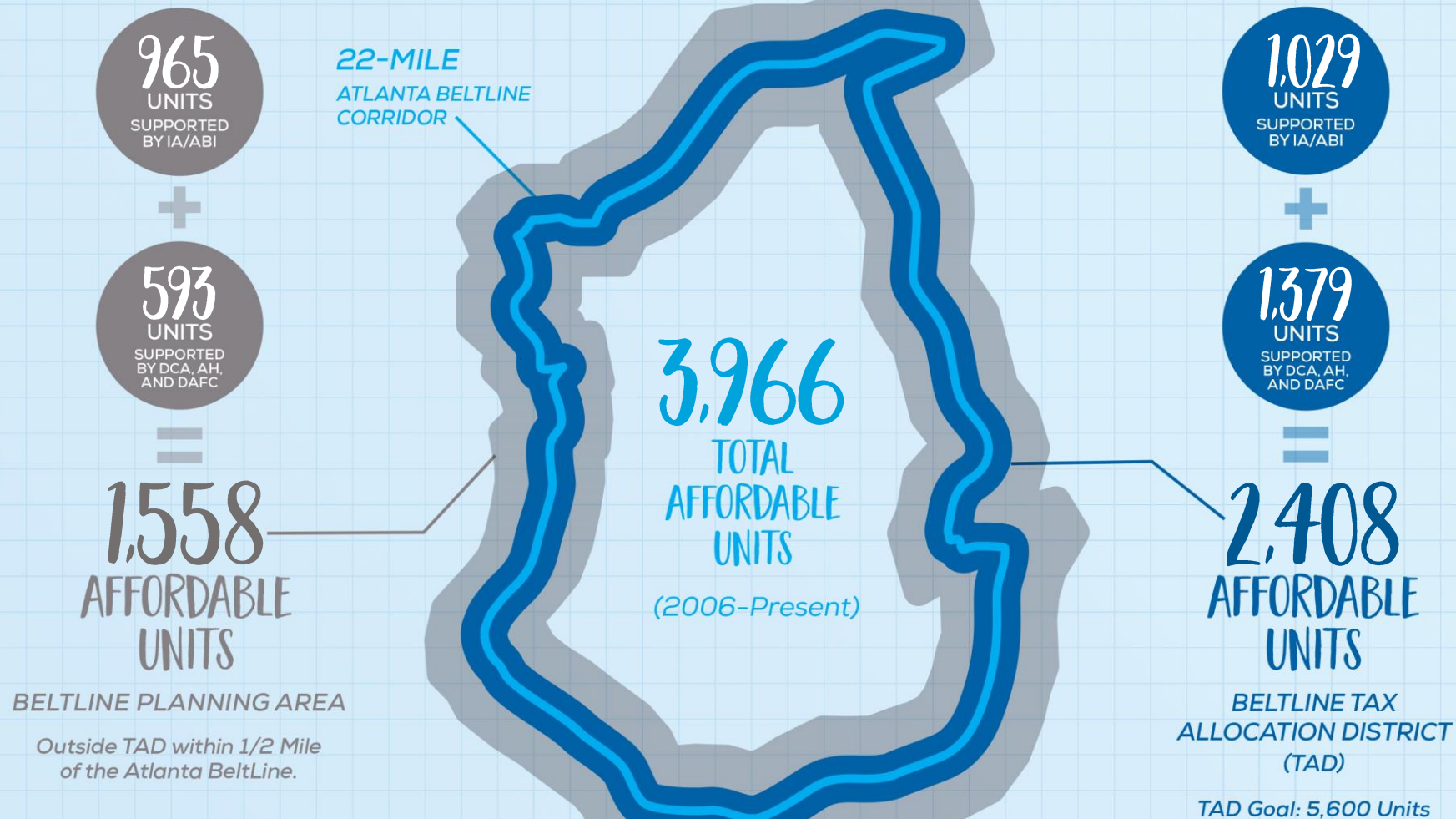
AFFORDABLE UNITS CREATED/PRESERVED

TAD and Planning Area boundaries are represented here for illustrative purposes only.

For precise boundary lines, please visit:
beltline.org/map

CHART LEGEND >>

ABI	Atlanta BeltLine
AH	Atlanta Housing
DAFC	Development Authority of Fulton County
DCA	Department of Community Affairs
IA	Invest Atlanta





CHAPPELL ROAD LAND ACQUISITION

Largest affordable housing land purchase to date

- Located in Bankhead/Historic Westin Heights
- +/-31 acres
- Regional transit and trail connectivity
- \$25.6M purchase price; below FMV (charitable contribution)
- Adjacent to 50+ acres of City land (DPR, DWM, ADOT)





CHAPPELL ROAD LAND ACQUISITION



 Property



MURPHY CROSSING

RFP for Purchase/ Redevelopment Published April 20th

- Focus on sustainable living-wage jobs accessible to surrounding neighborhood residents; affordable housing; green space; innovative site design
- Community feedback incorporated





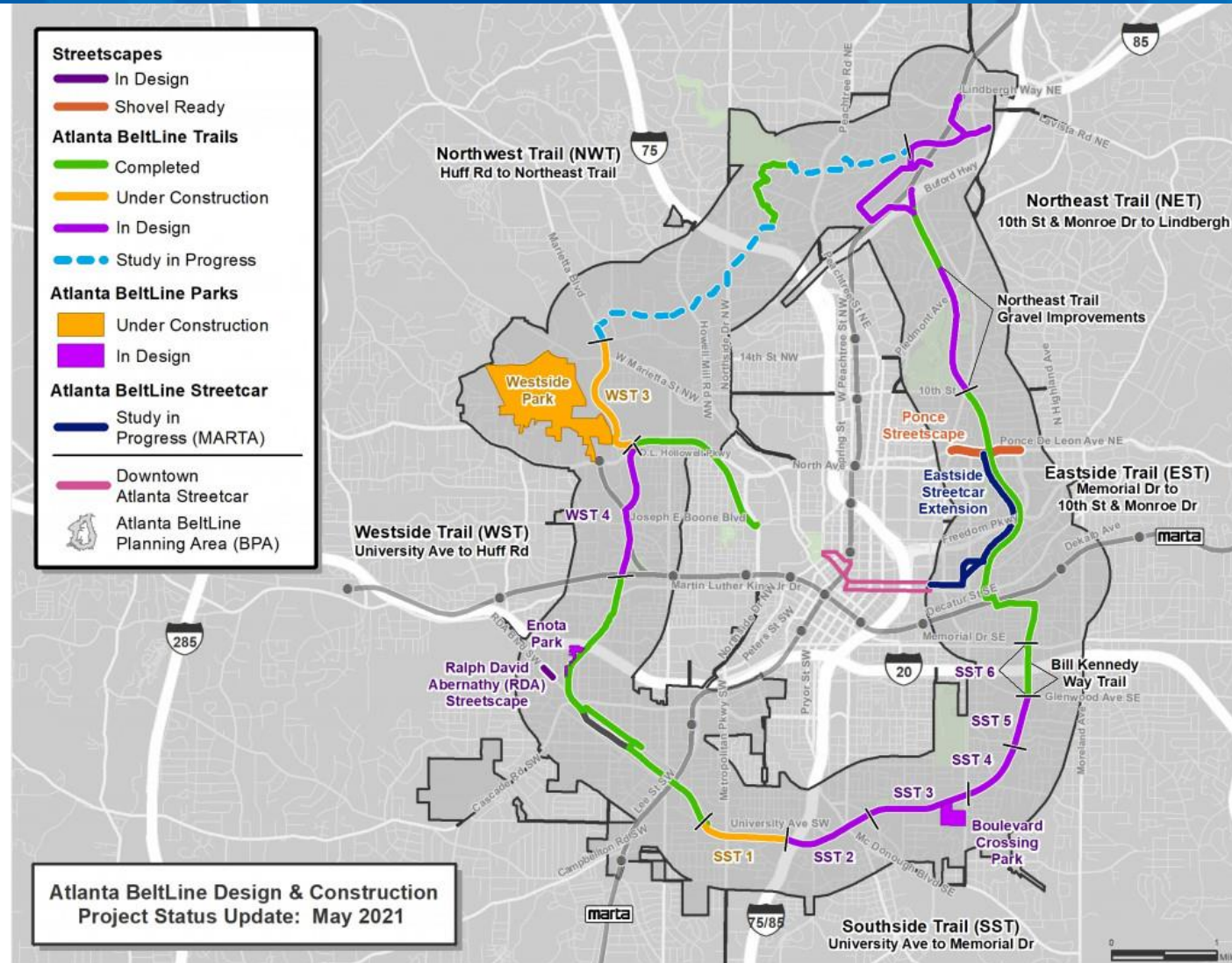
TRAIL UPDATES

Northeast Trail

- Segment 1 – gravel installation
- Segment 2 – opened to the public in April

Southside Trail

- Segment 1 - open at the end of summer
- Segment 6 (Bill Kennedy Way) – complete
- \$4M grant from ARC





EX² TECHNOLOGY + CONDUIT

Partnership with eX² Technology will transform 15.8 miles of the BeltLine into a smart city corridor





BELTLINE LIVE STREAM

A series of performance works and talks by artists in the 2020 – 2021 exhibition.





QUESTIONS?

