

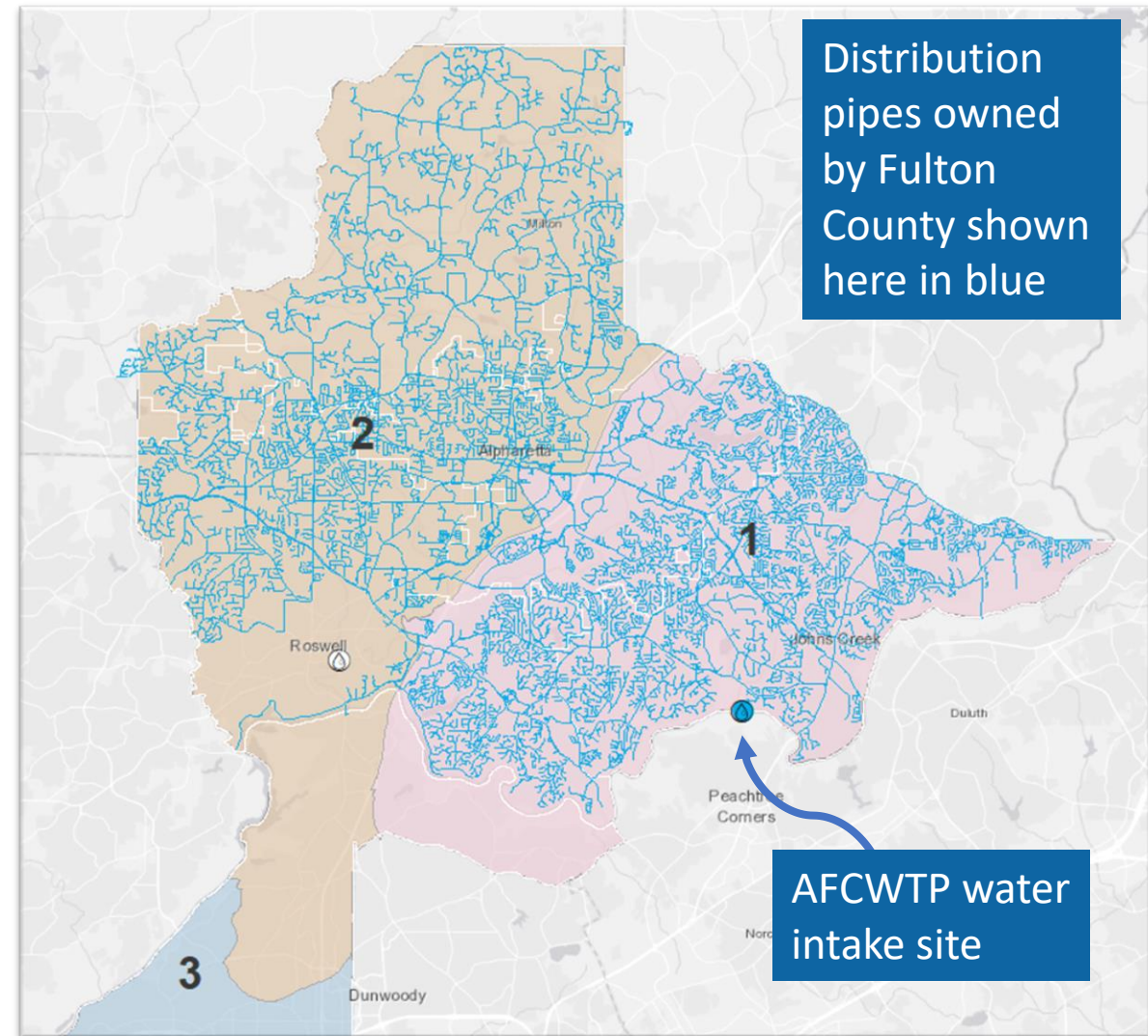
Water Service Line Field Investigations

US EPA Lead and Copper Rule Revision Compliance



Rule overview

- On December 12, 2021 the EPA released the Lead and Copper Rule Revision, **affecting all water service providers in the US**
- Requires creation of **water service line inventory** of materials in service area
- Initial EPD submittal: **October 16, 2024**



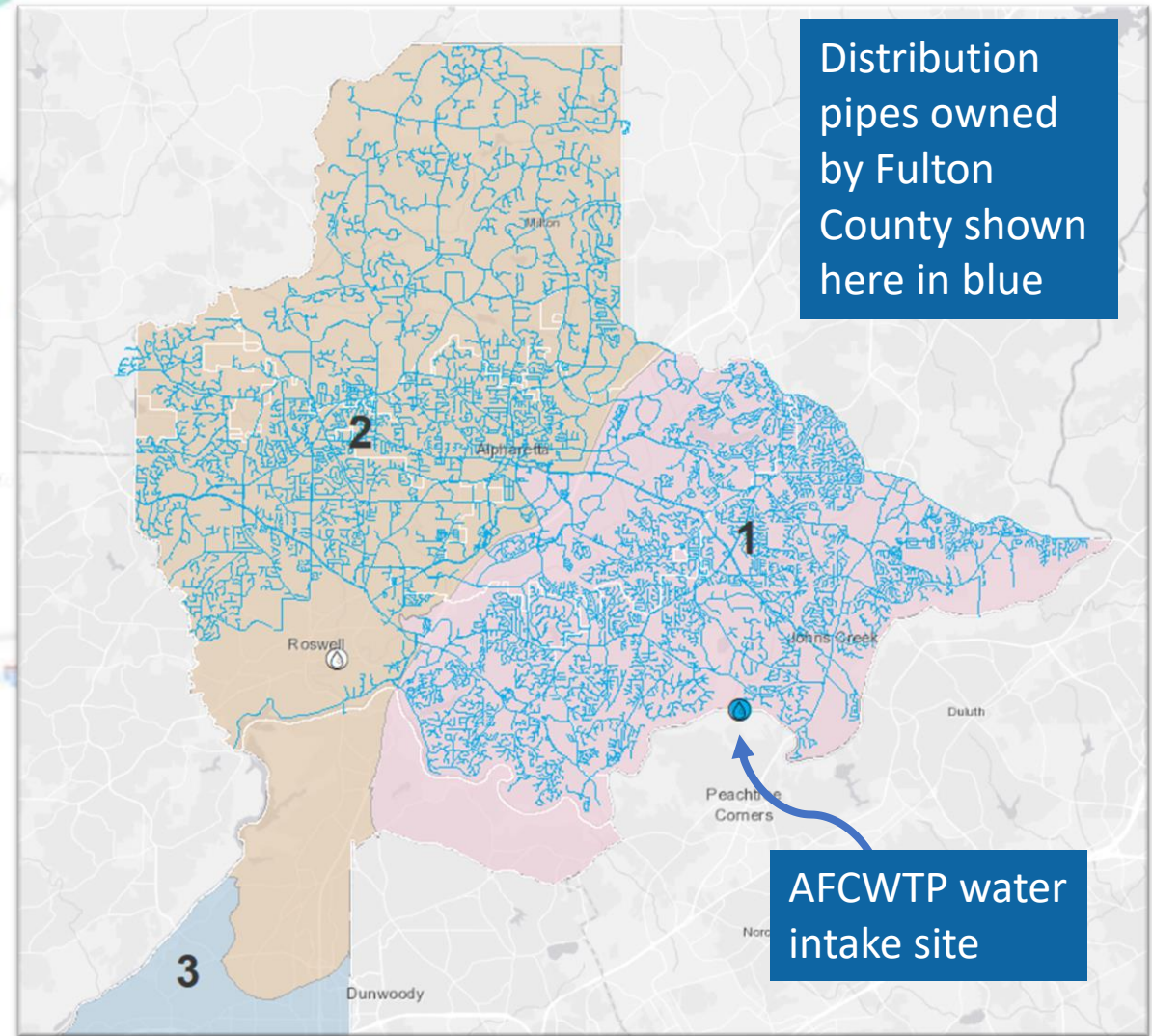
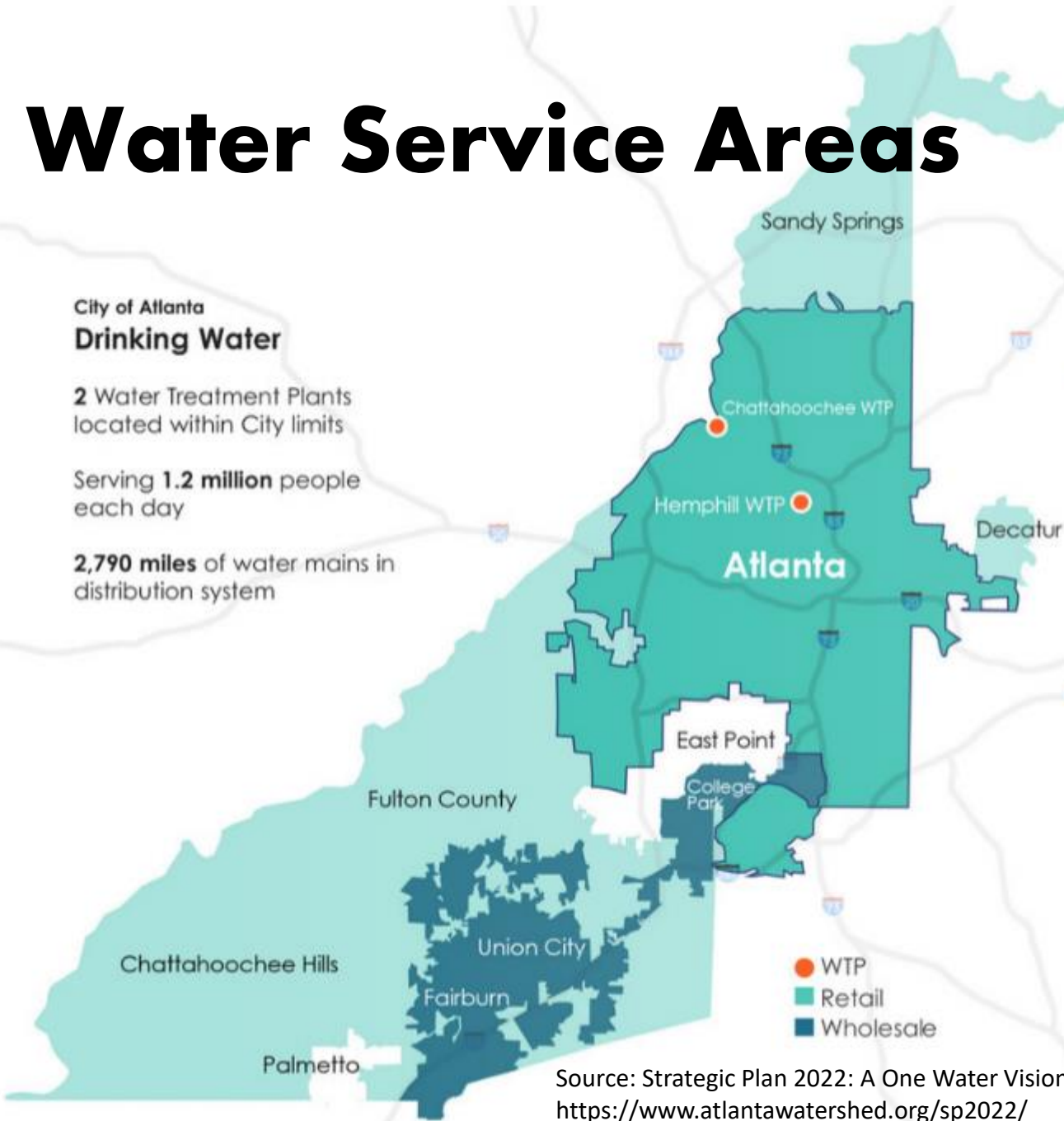
Water Service Areas

City of Atlanta Drinking Water

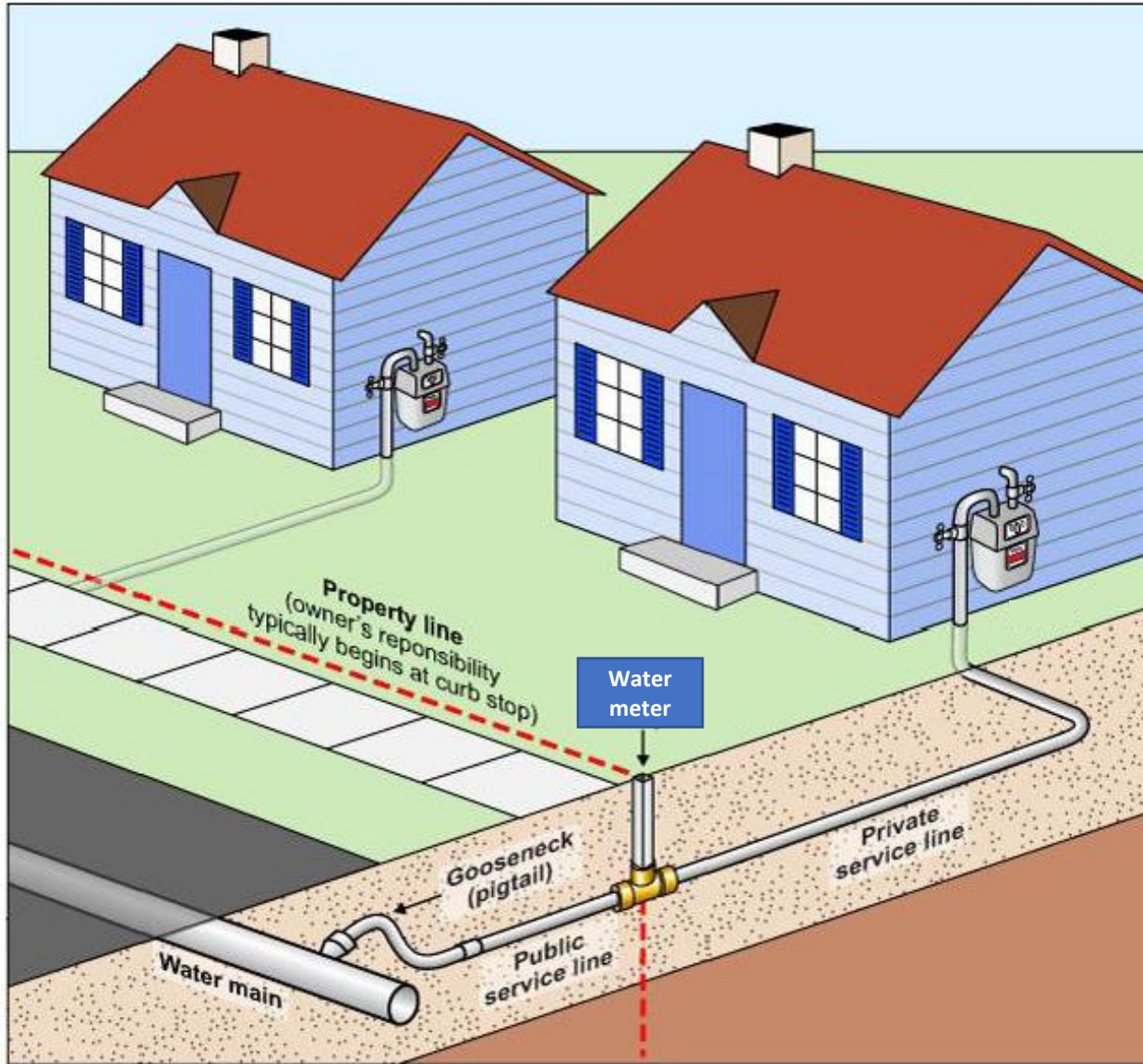
2 Water Treatment Plants
located within City limits

Serving **1.2 million** people
each day

2,790 miles of water mains in
distribution system



Source: Strategic Plan 2022: A One Water Vision
<https://www.atlantawatershed.org/sp2022/>

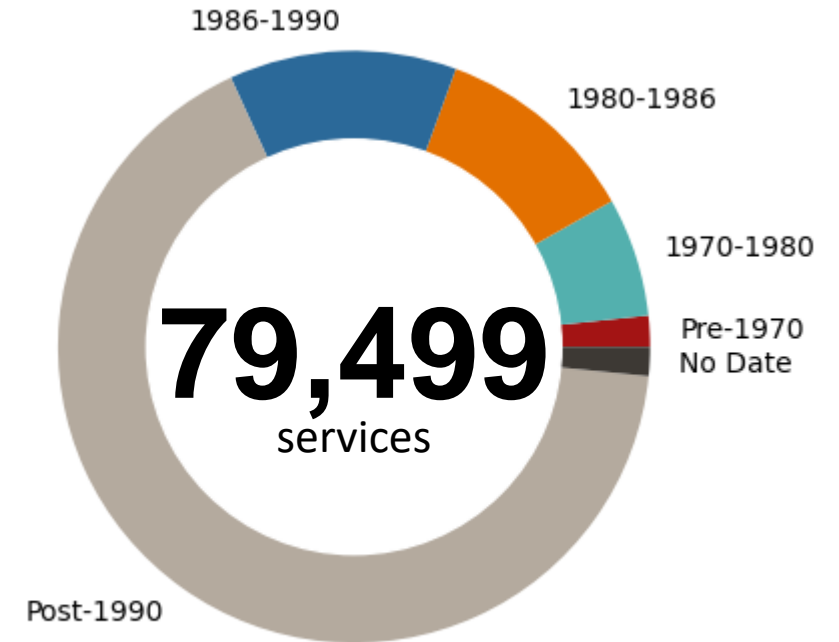


What is a service line?

- The service line is the pipe that brings water from the water main into a residence or other building.
- **Public service line:** from water main to the water meter
- **Private service line:** from the water meter into a residence or other building

Field Investigations

- Historical Review:
 - Tax Assessor Records
 - Water meter installation records
 - Georgia Lead Ban:
 - January 1, 1990
- 52,910 (67%) Known Non-Lead
- **26,539 Unknowns**



Source: GIS water service customer data, tax assessor structures data

Sampling Requirements

- Current Regulation:
 - 50 sites, 50 samples every 3 years
- New Regulation:
 - New sampling requirements
 - All schools and daycares in next 5 years
 - **6x the number of samples** compared to previous 6 year period

