

# Juvenile Justice Center Courtyard: Conceptual Design

## The Courtyard of Second Chances



FULTON COUNTY  
arts & culture

Design by



Martin Rickles Studio  
[www.m-r.studio](http://www.m-r.studio)



# The site



Judge Romae T. Powell Juvenile Justice Center  
395 Pryor St. SW, Atlanta, GA 30312



## The site



Recent improvements include painting the wall in preparation of the mural, clearing damaged furniture, and pressure washing the concrete



# Design Brief

- Use a trauma-informed design approach
- A space for justice involved families and staff
- Space for play, but not a ‘traditional’ play space
- Balance expectations on design within a justice setting with the desire for a colorful and therapeutic space

## Context: Justice involved youth

- Most youth who are involved with the justice system have a history of childhood adversity
- 75%-93% are exposed to multiple types of violence and traumatic events before contact with the juvenile justice system<sup>1</sup>
- Cognitive processing and self-regulation can be under-developed when daily survival skills become prioritized in a traumagenic environment.

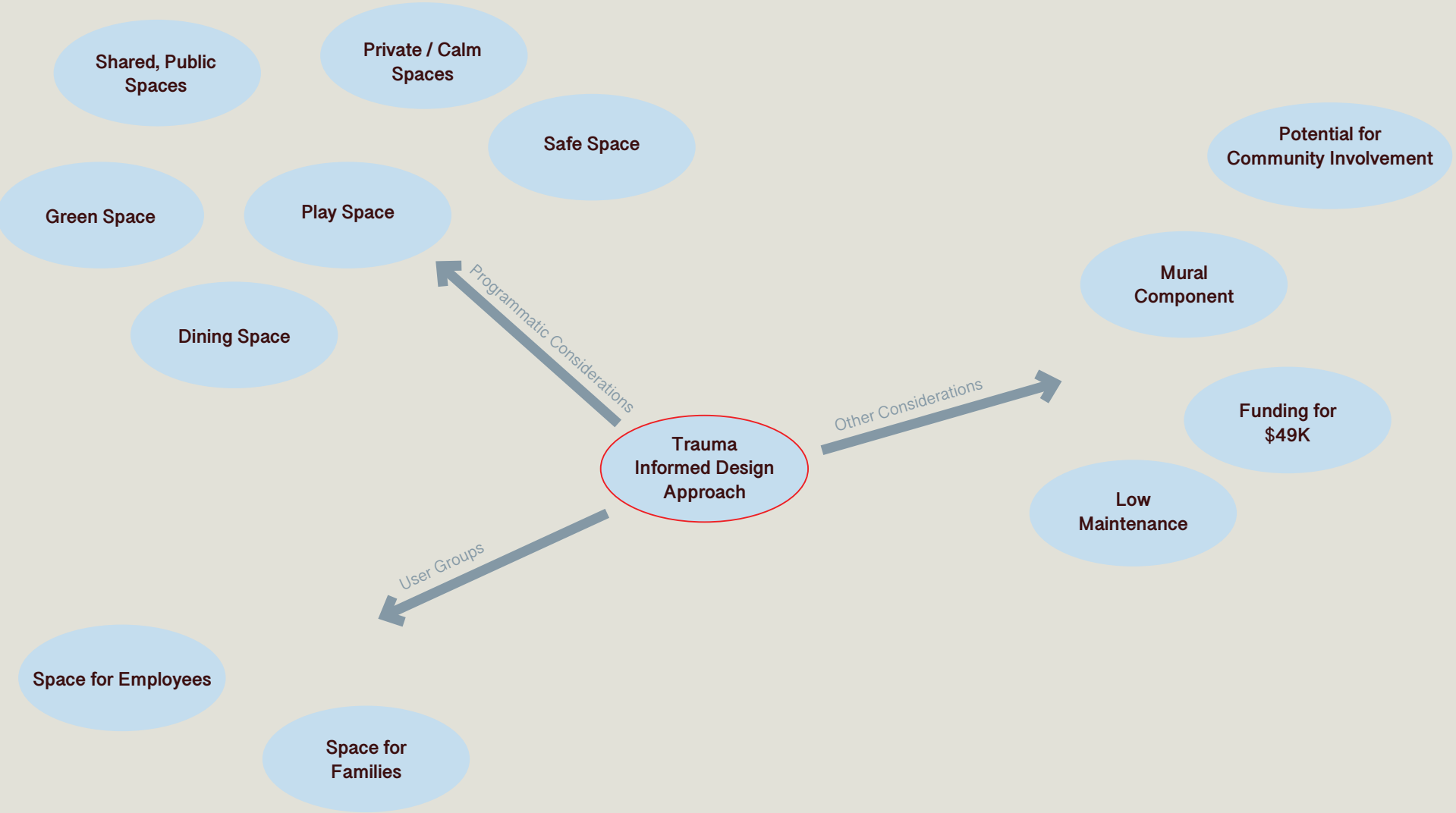
## What is Trauma-informed design?

- Our surroundings directly inform our nervous, endocrine, and immune systems. For an individual with trauma, a poorly designed space can be particularly detrimental to their healing process.
- Cultivating an environment that recognizes the impact of traumatic childhood experiences while striving for a physically and psychologically safe environment for both youth and staff.
- The goal of trauma-informed design is to create environments that promote a sense of calm, safety, dignity, empowerment, and well-being for all occupants.

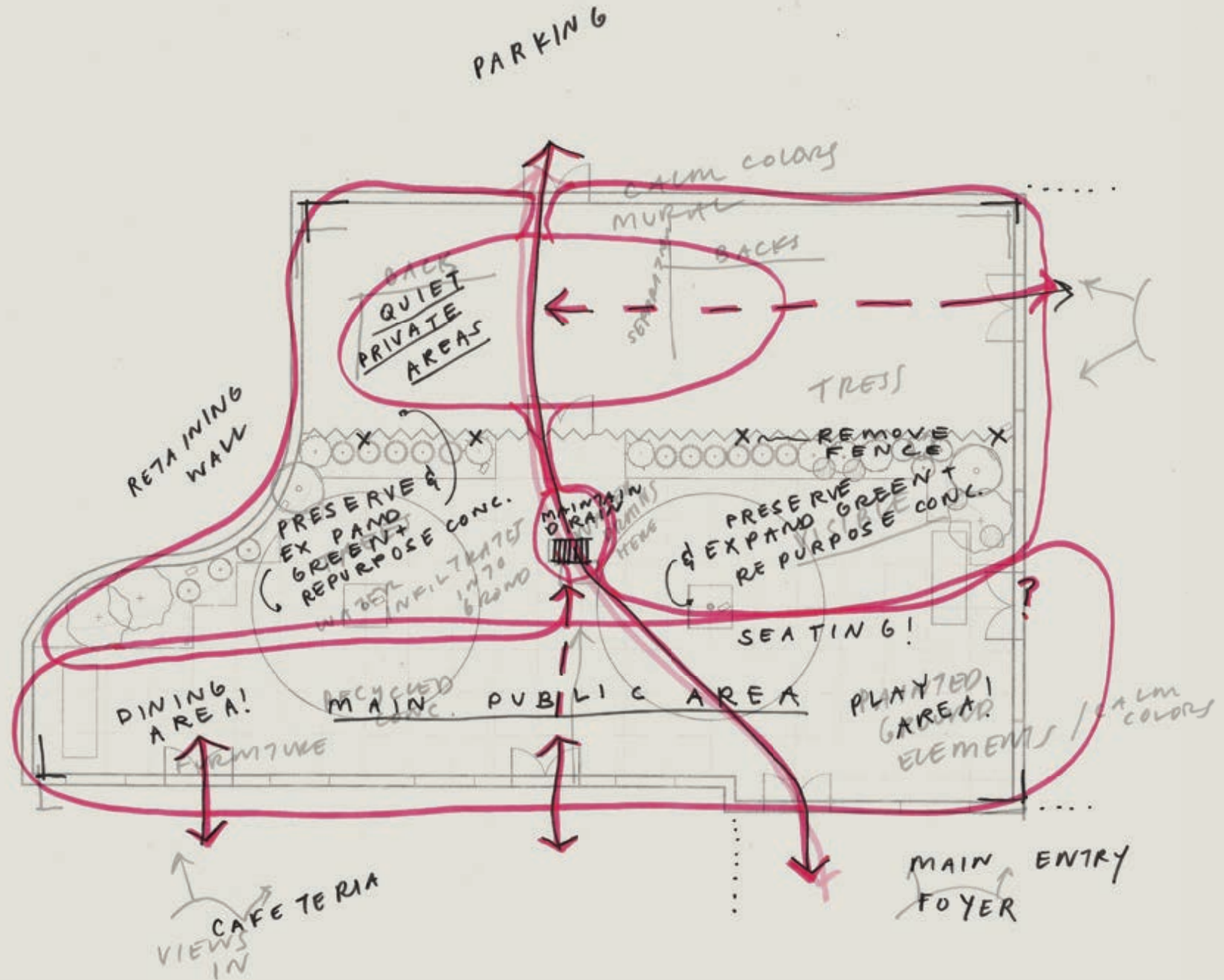
Source:

1. Baglivio, Michael T., Kevin T. Wolff, Alex R. Piquero, and Nathan Epps. “The Relationship between Adverse Childhood Experiences (ACE) and Juvenile Offending Trajectories in a Juvenile Offender Sample.” *Journal of Criminal Justice* 43, no. 3 (2015): 229–41. <https://doi.org/10.1016/j.jcrimjus.2015.04.012>.

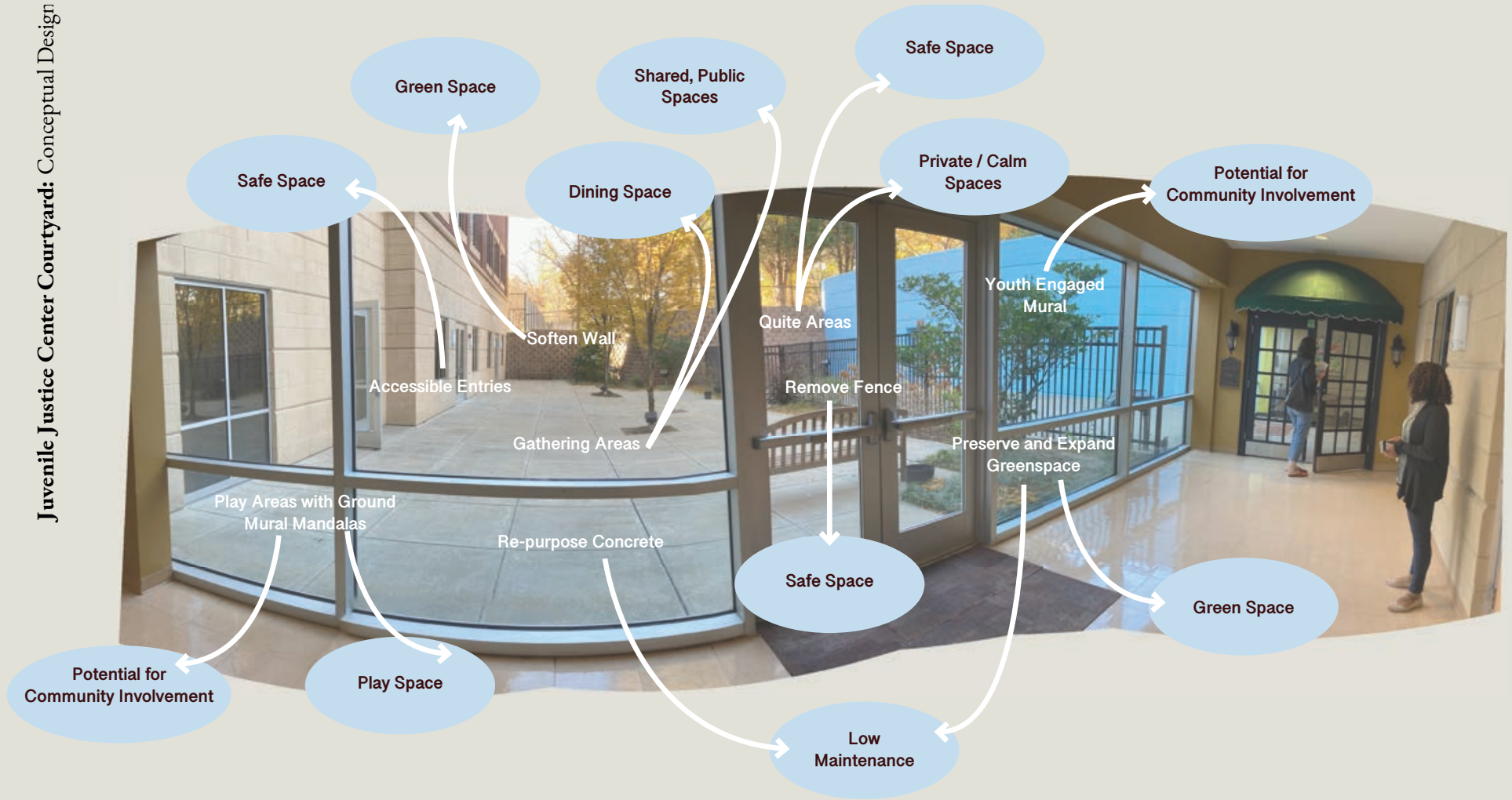
# Project Goals



# **Courtyard of Second Chances Goals and Concept Review**

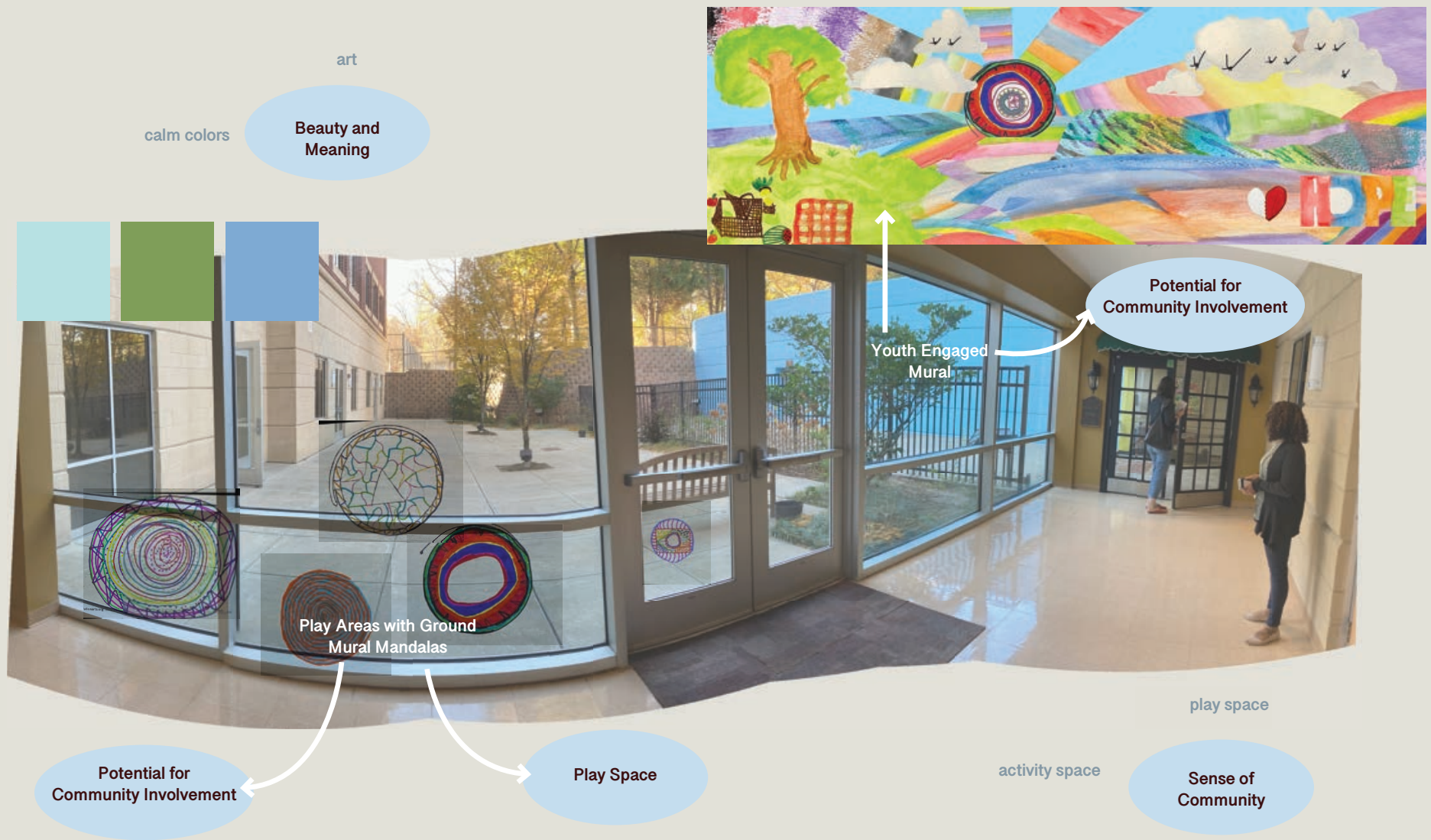


Design Program Diagram



## Courtyard of Second Chances Goals/Trauma Informed Design Overlay

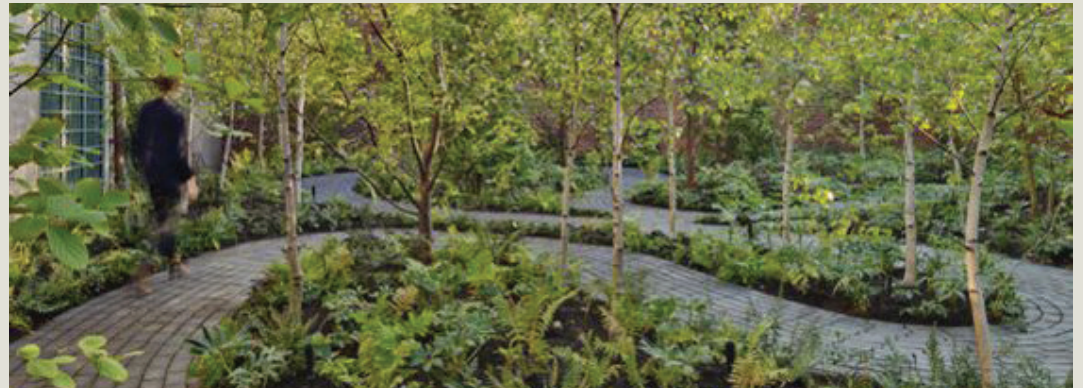




## Courtyard of Second Chances Murals and Community Involvement

## Precedent / Inspirational Imagery





access to nature

dining space

visibility of  
surroundings

group space

avoid sterile materials  
and colors

variety of sound  
options

independent vs.  
crowded space  
options

alleviate feeling of  
unaccounted for  
space

seating options

sunny / shady choices

allow people to make choices  
about where they exist  
in space

## Precedent Program and Sense of Place Imagery



art

play space

activity space

remove visual  
clutter

visibility of  
surroundings



avoid sterile materials  
and colors

calm colors

## Precedent Program and Sense of Place Imagery





**Coloco, Neighboring Gardens IVRY Montmousseau**

Perforations in asphalt, plantings, play through ground murals, community design and implementation

seating options

variety of sound options

activity space

independent vs. crowded space options

visibility of surroundings

play space

alleviate feeling of unaccounted for space

allow people to make choices about where they exist in space

access to nature



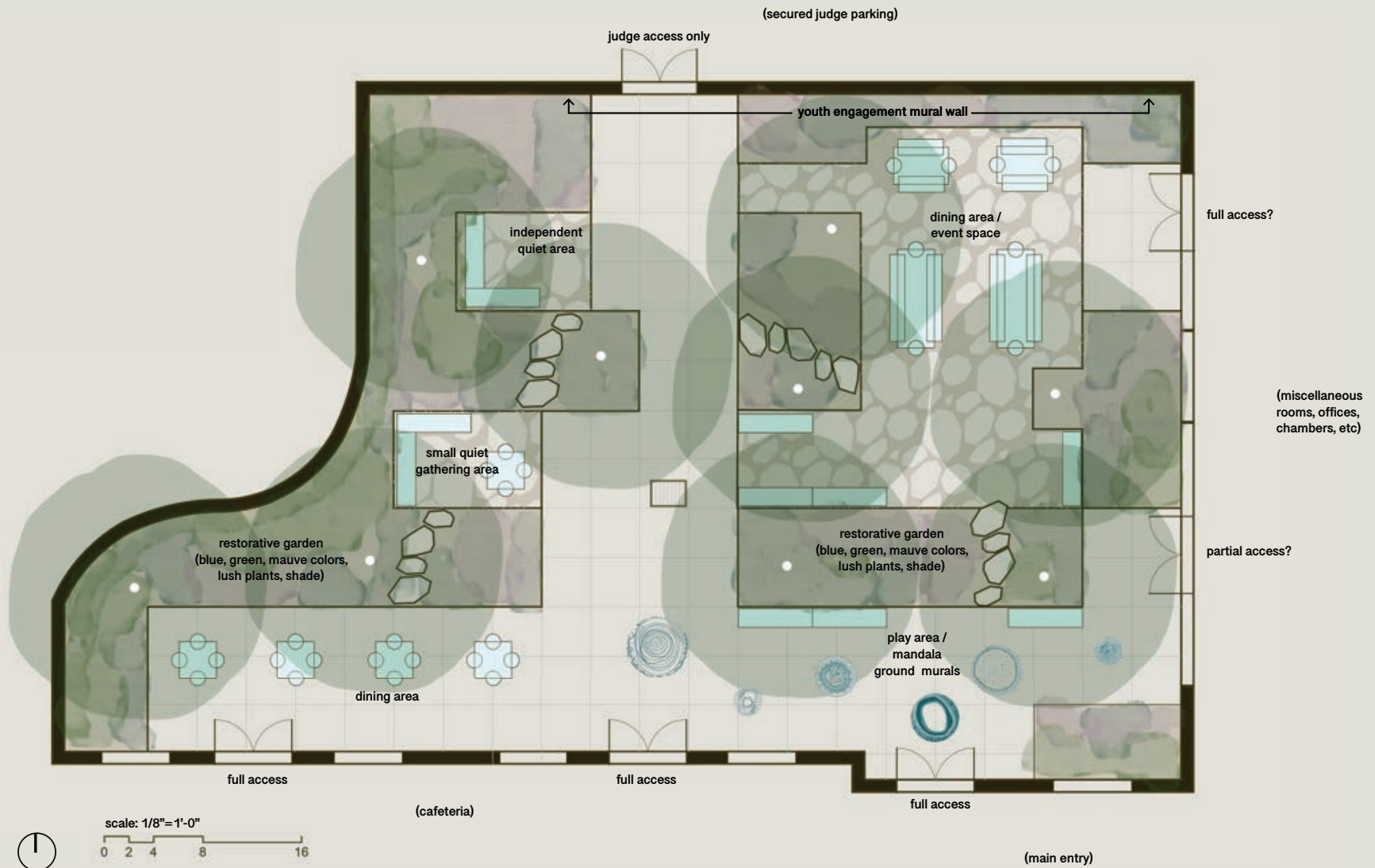
**Straub Thurmayr, Folly Forest**

Perforations in asphalt, tree plantings, ecological rejuvenation, brings nature to underprivileged neighborhood "health and learning"

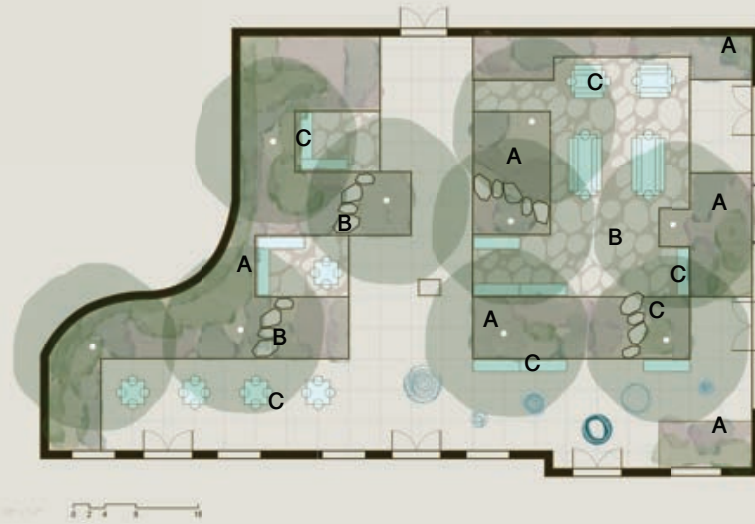
## Precedent Project Imagery

# Courtyard of Second Chances Design Concept

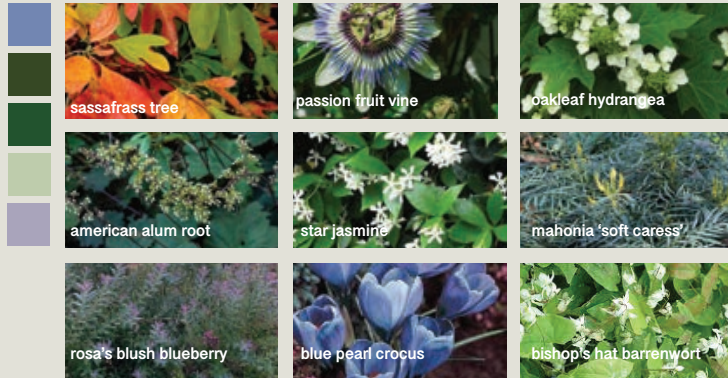




## Courtyard of Second Chances Concept 02



**A** restorative garden — lush plantings with calm color scheme (blues, greens, mauve; inspired by trauma informed design principles). plants have year round sensory qualities (smell, color, edible, flowers, evergreens, etc). shredded red oak mulch is used to improve soil health and retain moisture in soil for plants. existing plants are included in addition to the recommended palette below. soil is amended for plant health and drainage. drought tolerant plants are used.



suggested plant palette



shredded red oak mulch

**B** pervious gathering area — courtyard concrete is re-used as pervious pavers. red oak mulch is base layer between pavers. concrete is broken up creating pathways and more pervious area for water to drain, improving regional water system and soil health. a variety of seating and dining areas are available in pervious gathering areas (private areas, communal area, shaded areas, sunny areas).



concrete is broken up to create larger planted areas and re-used as pavers



shredded red oak mulch

**C** seating and dining — benches and tables are made from re-used stacked concrete. table tops are made from a sustainable hardwood, such as sassafras. the wood and concrete evoke a soft warm natural character, avoiding sterile materials such as metals.

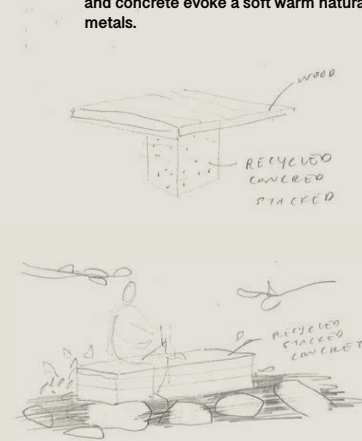


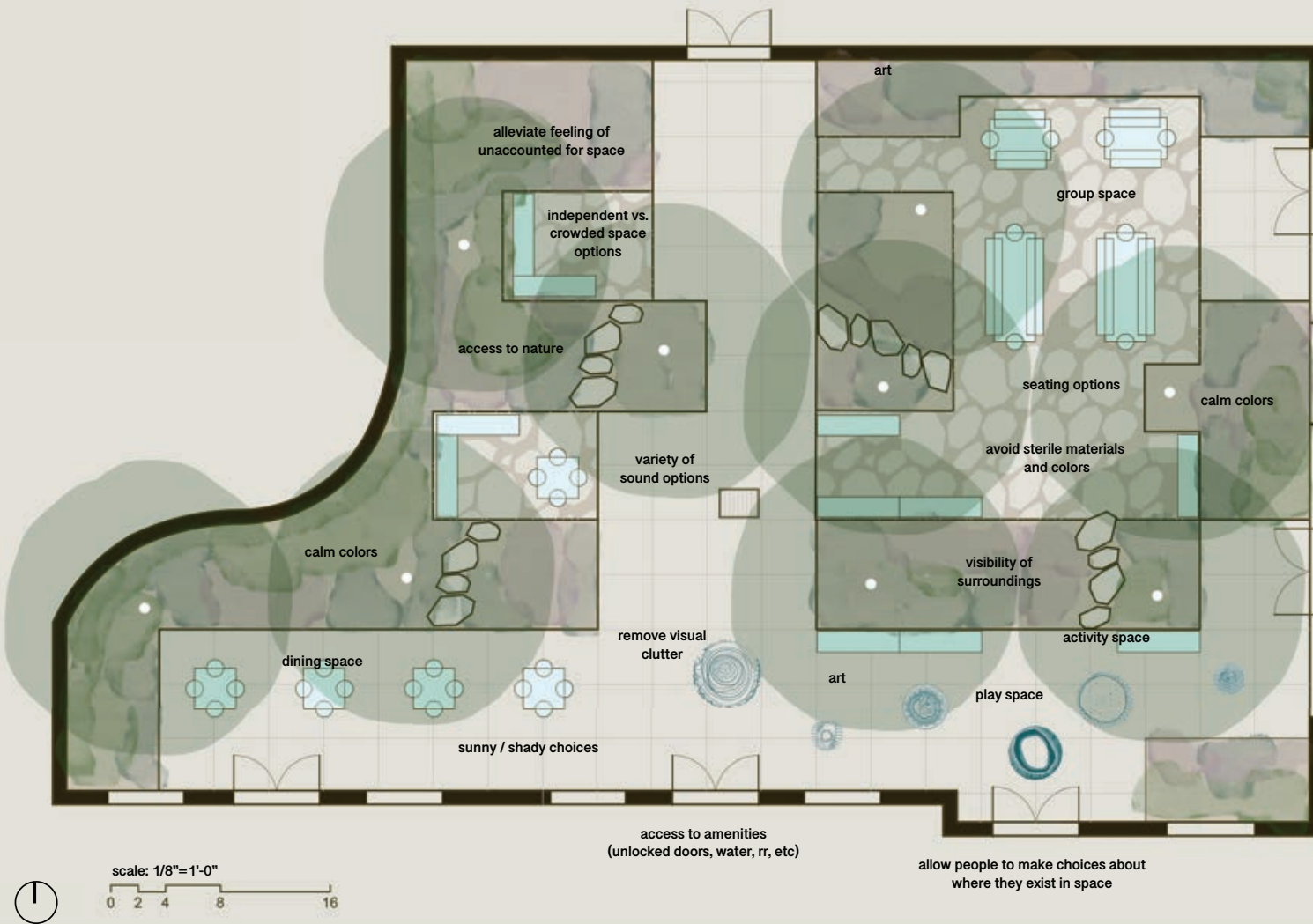
table top (sassafras)



re-used stacked concrete bench and table base

## Design Palette





Stress Management

Security, Privacy, and Personal Space

Dignity and Self Esteem

Beauty and Meaning

Sense of Community

Empowerment and Personal Control

## Courtyard of Second Chances Concept 02: Trauma Informed Design Overlay