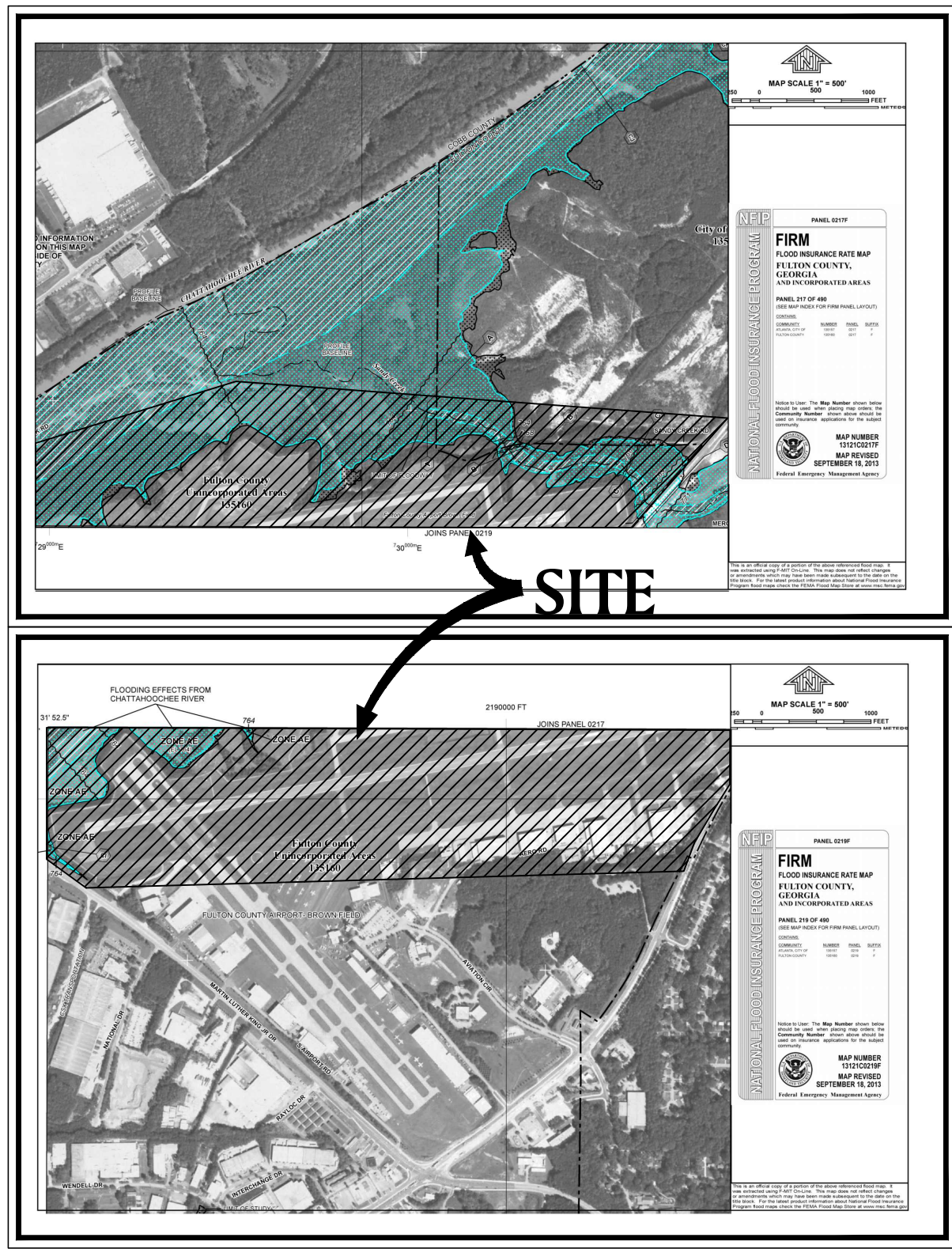


130161111.71 NORTH TERMINAL AREA - PHASE II.dwg, 4000 x 2400 INCHES, SHEET PHASE II, DWG TO PLOT, WLMR, 04/13/2018 2:13:52 PM



VICINITY MAP

SCALE: NTS



A PORTION OF THIS TRACT OF LAND DOES LIE WITHIN THE 100-YEAR INTERMEDIATE REGIONAL FLOOD ZONE AS PER THE FEDERAL EMERGENCY MANAGEMENT AGENCY AS SHOWN ON COMMUNITY PANEL NUMBER 13121C0217F AND 13121C0219F, DATED SEPTEMBER 18, 2013.

F.I.R.M. PANEL

SCALE: NTS



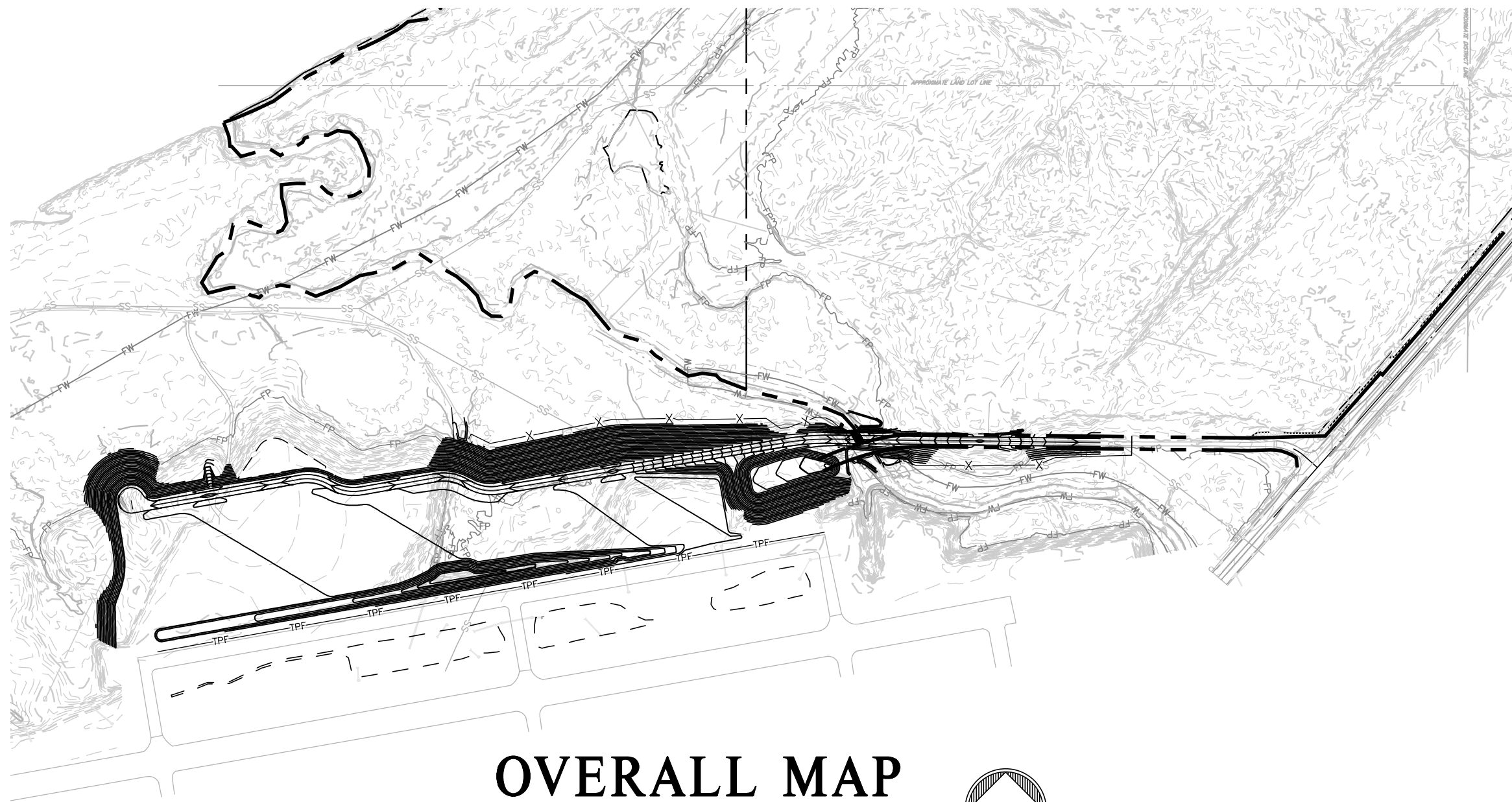
UTILITY CONTACTS:

Water  
City of Atlanta Department  
of Watershed Management  
Jarrell Thornton  
72 Marietta St.  
Atlanta, GA 30303  
(404) 546-32149

Sewer  
Fulton County Dept. of Public  
Works, Water Resources Division  
Tim Mullen  
141 Pryor St.  
Atlanta, GA 30303  
(404) 612-7429

# NORTH TERMINAL AREA - PHASE II

## SANDY CREEK ROAD AND FULTON INDUSTRIAL BOULEVARD FULTON COUNTY, GEORGIA LAND LOTS 17 & 21 14TH DISTRICT



OVERALL MAP

SCALE: 1" = 500'



TOTAL AREA = 49.92 AC±  
TOTAL DISTURBED  
AREA = 49.92 AC±



### Sheet List Table

Sheet Number	Sheet Title	01.30.17	05.11.17	07.05.17	11.06.17	02.06.18	04.13.18
C-000	COVER	•	•	•	•	•	•
C-001	TRACKING SURVEY	•	•	•	•	•	•
C-002	GENERAL NOTES	•					
C-003	EXISTING SURVEY PRIOR TO PHASE I CONSTRUCTION						
C-004	OVERALL DEMOLITION PLAN						
C-005	DEMOLITION PLAN						
C-006	DEMOLITION PLAN						
C-007	DEMOLITION PLAN						
C-100	OVERALL SITE PLAN						
C-110	DETAILED SITE PLAN						
C-111	DETAILED SITE PLAN						
C-112	DETAILED SITE PLAN						
C-113	DETAILED SITE PLAN						
C-200	OVERALL GRADING PLAN		•				
C-210	DETAILED GRADING PLAN	•		•			
C-211	DETAILED GRADING PLAN						
C-212	DETAILED GRADING PLAN	•					
C-213	CROSS SECTIONAL PROFILES						
C-214	CROSS SECTIONAL PROFILES						
C-300	OVERALL UTILITY PLAN				•	•	•
C-310	DETAILED UTILITY PLAN				•	•	•
C-311	DETAILED UTILITY PLAN				•	•	•
C-312	DETAILED UTILITY PLAN				•	•	•
C-313	DETAILED UTILITY PLAN				•	•	•
C-400	ESPC PLAN		•				
C-401	ESPC PLAN		•				
C-410	INITIAL EROSION CONTROL PLAN		•				
C-411	INITIAL EROSION CONTROL PLAN		•				
C-412	INITIAL EROSION CONTROL PLAN		•				
C-413	INITIAL EROSION CONTROL PLAN		•				
C-414	FINAL PHASE I EROSION CONTROL PLAN		•				
C-420	INTERMEDIATE EROSION CONTROL PLAN						
C-421	INTERMEDIATE EROSION CONTROL PLAN		•				
C-422	INTERMEDIATE EROSION CONTROL PLAN		•				
C-430	FINAL EROSION CONTROL PLAN						
C-431	FINAL EROSION CONTROL PLAN		•				
C-432	FINAL EROSION CONTROL PLAN		•				
C-510	ROAD PROFILES						
C-511	ROAD PROFILES						
C-520	STORM PROFILES						
C-521	STORM PROFILES						
C-522	STORM PIPE CHART						
C-530	SEWER PROFILES						
C-531	UTILITY CROSSING PROFILES						•
C-610	SITE DETAILS						
C-620	GRADING DETAILS	•					
C-621	OCS DETAILS						
C-622	GRADING DETAILS						
C-630	UTILITY DETAILS						
C-631	UTILITY DETAILS				•		
C-640	EROSION CONTROL DETAILS		•				
C-641	EROSION CONTROL DETAILS						
C-642	EROSION CONTROL DETAILS						
C-643	EROSION CONTROL DETAILS						
SQ-1	SUMMARY OF QUANTITIES						
GN-1	GENERAL NOTES						
PSPN-1	PROJECT SAFETY AND PHASING PLAN NOTES						
PSPL-1	PROJECT SAFETY AND PHASING PLAN LAYOUT						
PSPP-1	PROJECT SAFETY AND PHASING PLAN						
PSPD-1	PROJECT SAFETY AND PHASING PLAN DETAILS						
FD-1	FENCING PLAN DETAILS NO.1						
FD-2	FENCING PLAN DETAILS NO.2						
FD-3	FENCING PLAN DETAILS NO.3						

OWNER: **FULTON COUNTY**

ENGINEER:

**PAULSON MITCHELL**  
INCORPORATED

CONTACT:  
MR. DANIEL MITCHELL, P.E.

LAND PLANNERS  
ENGINEERS • SURVEYORS  
TRANSPORTATION  
LANDSCAPE ARCHITECTS

85-A MILL STREET  
SUITE 200  
ROSWELL, GEORGIA 30075

VOICE 770.650.7685  
FAX 770.650.7684  
www.paulsonmitchell.com

NOTE: FEDERAL FUNDING APPLIES

JOB NO:

**2016111.71**

ORIGINAL ISSUE DATE: 12.21.16

2016111.71 NORTH TERMINAL AREA - PHASE II



0 100 200 400 80

SCALE: 1 = 20

## NORTH TERMINAL AREA - PHASE II



**MAJESTIC REALTY  
COMPANY**

---

One Securities Centre  
3490 Piedmont Road NE, Suite 21  
Atlanta, GA 30305  
(404) 467-5255




4	11.06.17	CLIENT COMMENTS
5	02.16.18	CITY COMMENTS
6	04.13.18	CITY COMMENTS



## OVERALL UTILITY PLAN

# C-300





**PAULSON MITCHELL**  
INCORPORATED

# NORTH TERMINAL AREA - PHASE II

FOR:

A circular professional engineer seal for the State of Georgia. The outer ring contains the text "GEORGIA" at the top and "DANIEL S. MITCHELL" at the bottom. Inside the ring, the word "REGISTERED" is at the top, "No. 20037" is in the center, and "PROFESSIONAL ENGINEER" is at the bottom. A handwritten signature "D. Mitchell" is written across the seal, and the date "4-13-18" is handwritten below the number "20037".

## REVISIONS

4	11.06.17	CLIENT COMMENTS
5	02.16.18	CITY COMMENTS
6	04.13.18	CITY COMMENTS



## DETAILED UTILITY PLAN

SHEET

# C-310





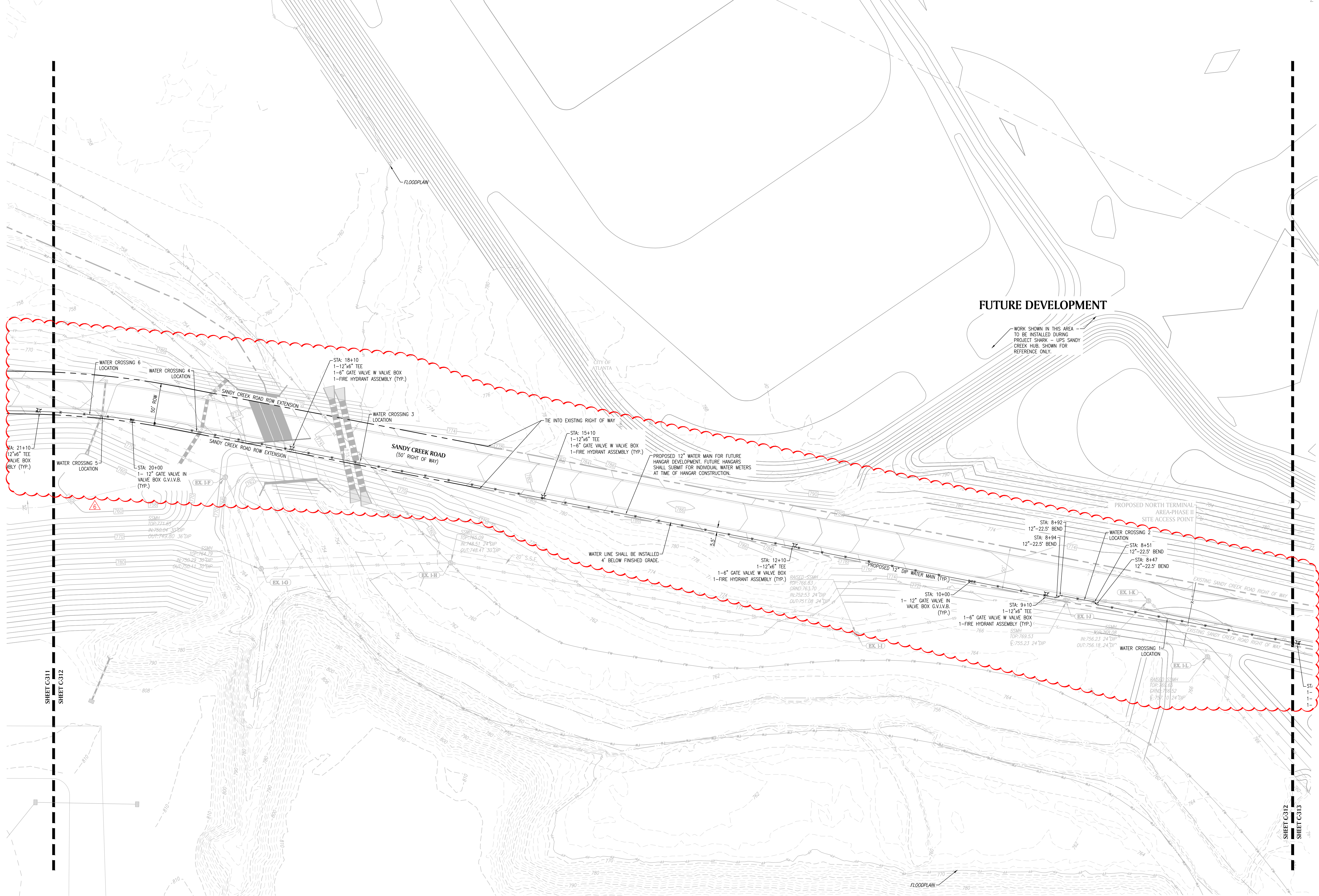
**PAULSON MITCHELL**  
INCORPORATED

A circular professional engineer seal for the State of Georgia. The outer ring contains the text "GEORGIA" at the top and "DANIEL S. MITCHELL" at the bottom. Inside the ring, the words "REGISTERED" and "PROFESSIONAL ENGINEER" are written in a circular path. In the center, the text "No. 20037" and "4-13-18" are printed. The seal is stamped in blue ink on a document.

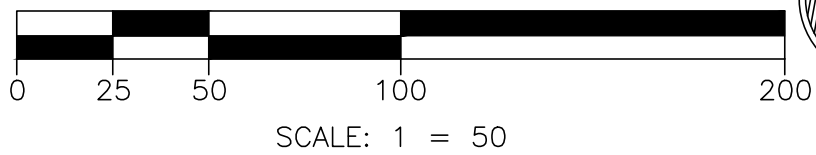
**C-311**



1:2016.03/011110.dwg/2016.11.14.dwg, PREVIOUS PAPER SIZE (36.00 X 24.00 INCHES), SCHEME IN/OUT, DWG TO PDF, PLOT, PLOT DATE: April 13, 2016 15:57:17 PM



## DETAILED UTILITY PLAN



LAND PLANNERS  
ENGINEERS • SURVEYORS  
TRANSPORTATION  
LANDSCAPE ARCHITECTS

85-A MILL STREET  
SUITE 200  
ROSWELL, GEORGIA 30075  
VOICE 770.650.7685  
FAX 770.650.7684  
www.paulsonmitchell.com

**PAULSON MITCHELL**  
INCORPORATED

### PROJECT: NORTH TERMINAL AREA - PHASE II

SANDY CREEK ROAD AND  
FULTON INDUSTRIAL BOULEVARD  
LAND LOTS 17 & 21  
14TH DISTRICT  
CITY OF ATLANTA  
FULTON COUNTY, GA

FOR:  
**MAJESTIC REALTY  
COMPANY**  
One Securities Centre  
3490 Piedmont Road NE, Suite 210  
Atlanta, GA 30305  
(404) 467-5255



REVISIONS		
△	11.06.17	CLIENT COMMENTS
△	02.16.18	CITY COMMENTS
△	04.13.18	CITY COMMENTS



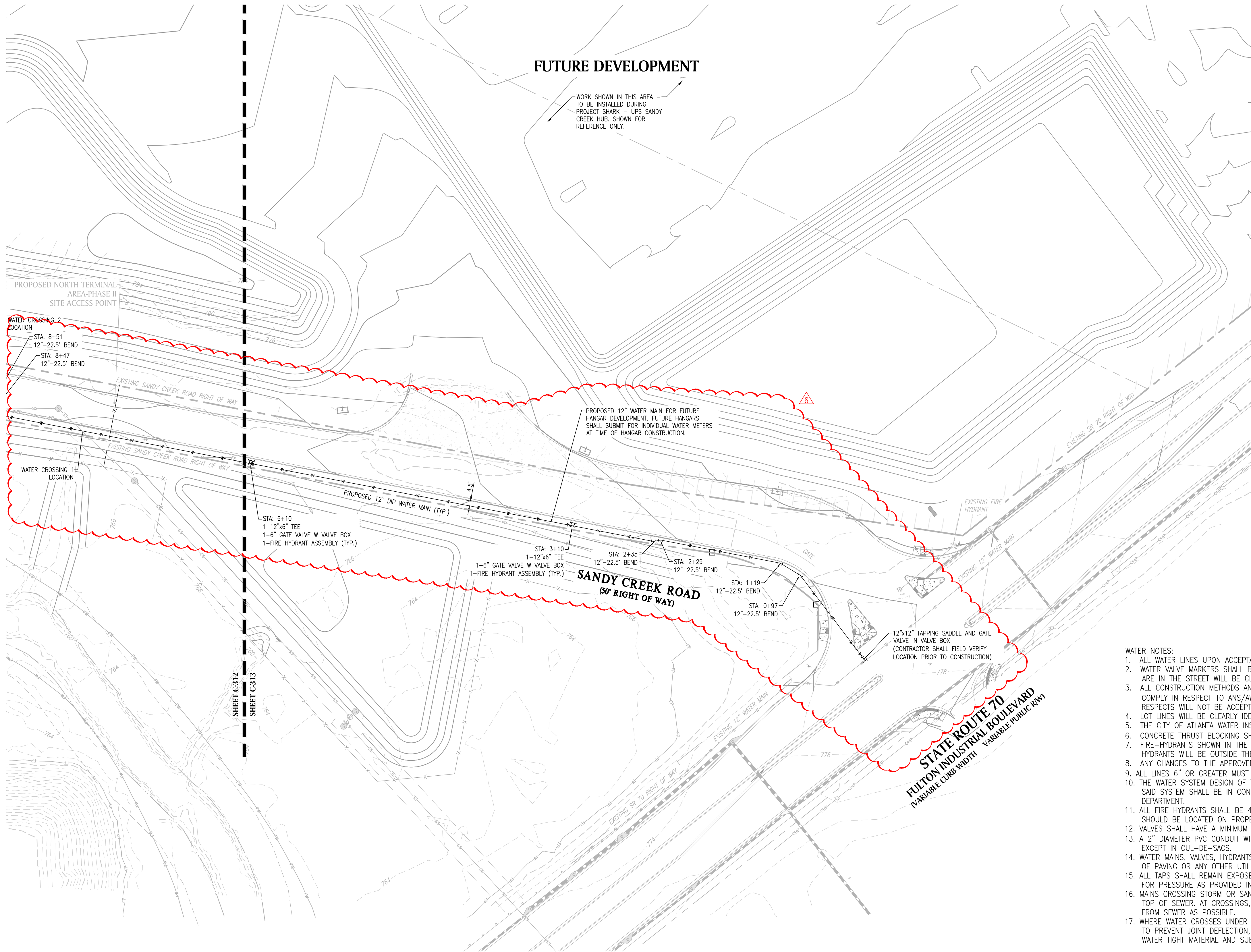
20161111u.dwg 12.21.16

DETAILED UTILITY PLAN

SHEET **C-312**



I:\2016\20161110\_CWA\20161110.dwg, PREVIOUS PAPER SIZE (36.00 X 24.00 INCHES), SCHEME PLANS, DWG TO PDF, PLOT, 11/15/16, 11:40 AM, 11/15/16, 11:40 AM



- WATER NOTES:
1. ALL WATER LINES UPON ACCEPTANCE SHALL BECOME THE PROPERTY OF THE CITY OF ATLANTA, GEORGIA.
  2. WATER VALVE MARKERS SHALL BE PLACED AT ALL LOCATIONS WHERE WATER VALVES ARE NOT IN THE STREETS. WATER VALVES THAT ARE IN THE STREET WILL BE CLEARLY MARKED ON THE CURB.
  3. ALL CONSTRUCTION METHODS AND MATERIALS USED IN THE CITY OF ATLANTA WATER SYSTEM MUST BE MADE OF DUCTILE IRON, AND COMPLY IN RESPECT TO ANS/AWWA A21-111-85 STANDARD SPECIFICATIONS. GLANDS THAT DO NOT MEET THE SPECIFICATIONS IN ALL RESPECTS WILL NOT BE ACCEPTED.
  4. LOT LINES WILL BE CLEARLY IDENTIFIED AND MARKED ON TOP OF CURBS BEFORE THE WATER MAIN IS INSTALLED.
  5. THE CITY OF ATLANTA WATER INSPECTOR MUST BE NOTIFIED 48 HOURS PRIOR TO START OF EACH PHASE OF CONSTRUCTION.
  6. CONCRETE THRUST BLOCKING SHALL BE INSTALLED AT ALL BENDS, TEES, HYDRANTS, PLUGS, ETC. (SEE CITY OF ATLANTA DETAILS)
  7. FIRE-HYDRANTS SHOWN IN THE RADIUS OF A CURVE SHALL BE FIELD ADJUSTED SO THAT THE ACTUAL INSTALLATION OF FIRE HYDRANTS WILL BE OUTSIDE THE CURVE RADIUS.
  8. ANY CHANGES TO THE APPROVED WATER DRAWINGS MUST BE APPROVED BY THE CITY OF ATLANTA WATER DEPARTMENT ENGINEER.
  9. ALL LINES 6" OR GREATER MUST BE PRESSURE TESTED AT 250 PSI FOR A MINIMUM OF TWO (2) HOURS.
  10. THE WATER SYSTEM DESIGN OF THIS PLAN SHOWS THE APPROXIMATE LOCATION OF VARIOUS APPURTENANCES. ALL CONSTRUCTION OF SAID SYSTEM SHALL BE IN CONFORMITY WITH THE MINIMUM STANDARDS AND SPECIFICATIONS OF THE CITY OF ATLANTA WATER DEPARTMENT.
  11. ALL FIRE HYDRANTS SHALL BE 4.5 FEET BURY HYDRANTS WITH A MAXIMUM DISTANCE OF 500 BETWEEN EACH. FIRE-HYDRANTS SHOULD BE LOCATED ON PROPERTY LINES AND THE BACK OF ALL CUL-DE-SACS.
  12. VALVES SHALL HAVE A MINIMUM DISTANCE OF 1,000 FEET BETWEEN THEM AND PLACED NEAR A FIRE HYDRANT.
  13. A 2" DIAMETER PVC CONDUIT WILL BE USED TO ACCESS ALL LOTS ON THE OPPOSITE SIDE OF THE STREET FROM THE WATER MAIN, EXCEPT IN CUL-DE-SACS.
  14. WATER MAINS, VALVES, HYDRANTS AND APPURTENANCES SHALL BE INSTALLED BEFORE THE INSTALLATION OF THE SUB-BASE COURSE OF PAVING OR ANY OTHER UTILITIES EXCEPT SANITARY SEWER LINES.
  15. ALL TAPS SHALL REMAIN EXPOSED AT THE MAIN UNTIL THE SYSTEM HAS BEEN SUCCESSFULLY INSPECTED, DISINFECTED AND TESTED FOR PRESSURE AS PROVIDED IN THE SUBDIVISION RULES AND REGULATIONS.
  16. MAINS CROSSING STORM OR SANITARY SEWER SHALL BE LAID TO PROVIDE A MINIMUM 18-INCH BETWEEN BOTTOM OF WATER MAIN & TOP OF SEWER. AT CROSSINGS, A FULL LENGTH OF WATER PIPE SHALL BE LOCATED SO THAT BOTH JOINTS WILL BE AS FAR AWAY FROM SEWER AS POSSIBLE.
  17. WHERE WATER CROSSES UNDER SEWER, PROVIDE VERTICAL SEPARATION OF 18-INCHES, PROVIDE ADEQUATE SUPPORT FOR SEWERS TO PREVENT JOINT DEFLECTION, SETTLING ON AND BREAKING WATER MAINS; BOTH WATER AND SEWER MAINS CONSTRUCTED OF D.I.P. WATER TIGHT MATERIAL AND SUBJECTED TO HYDROSTATIC TESTING.

BILL OF MATERIALS			
Item	Quantity	Unit	Article
1	1	EA	12"x12" Tapping Sleeve & Valve
2	4.810	LF	12" D.I.P.
3	12	EA	12" D.I.P. 22.5" Bend
4	4	EA	12" D.I.P. 45" Bend
5	16	EA	Fire Hydrant Assembly
6	16	EA	6" Gate Valve
7	6	EA	12" Gate Valve
8	1	EA	Deadman Anchor
9	20.8	CU YD	Concrete Thrust Blocking

NOTE: SEE PROJECT SHARK - UPS SANDY CREEK HUB (GDOT PLANS) FOR ALL WORK WITHIN ROW.

NO WORK SHALL BE PERFORMED WITHIN GDOT RIGHT OF WAY WITHOUT GDOT PERMIT

NOTE: GAS LINE IS SHOWN FOR REFERENCE ONLY TO INDICATE PREFERRED LOCATION AVOID CONFLICTS WITH CONSTRUCTION SCHEDULE AND OTHER UTILITIES. ACTUAL LINE SIZES, VALVE LOCATIONS, FITTINGS, PRESSURE SETTINGS, AND ALL OTHER REQUIRED GAS INFORMATION SHALL BE PROVIDED BY OTHERS.



CITY OF ATLANTA

651 FOURTEENTH STREET  
ATLANTA, GEORGIA 30318  
OFFICE 404-862-1487  
FAX 404-862-1489

DEPARTMENT OF  
WATERSHED MANAGEMENT  
JO ANN MACRINA  
COMMISSIONER

Date: 8/15/2016

The following report is on FIRE HYDRANT and PRESSURE TEST results.  
Done by an Authorized Representative of The City of Atlanta.

Test location: Sandy Creek Rd. & Fulton Ind.  
Plat card #317, 250  
Test Hydrant # 10344  
Flow Hydrant #10343

Static: 106

Residual: 100

Pitot: 71

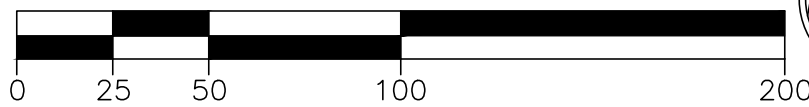
Flow: 1410 gpm

Comments: Flowed 2.5 inch nozzle 12 inch main. 11:40 am. Date 8-12-16

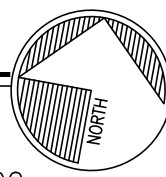
Requested by:  
Paulson Mitchell Inc.  
John Wise  
Phone 770-650-7685

City of Atlanta-Watershed Management  
Representative:  
Emanuel Toles 678-878-5192  
etoles@atlantaga.gov

## DETAILED UTILITY PLAN



SCALE: 1" = 50'



LAND PLANNERS  
ENGINEERS • SURVEYORS  
TRANSPORTATION  
LANDSCAPE ARCHITECTS  
85-A MILL STREET  
SUITE 200  
ROSWELL, GEORGIA 30075  
VOICE 770.650.7685  
FAX 770.650.7684  
www.paulsonmitchell.com

**PAULSON MITCHELL**  
INCORPORATED

PROJECT:

### NORTH TERMINAL AREA - PHASE II

SANDY CREEK ROAD AND  
FULTON INDUSTRIAL BOULEVARD  
LAND LOTS 17 & 21  
14TH DISTRICT  
CITY OF ATLANTA  
FULTON COUNTY, GA

FOR:

**MAJESTIC REALTY  
COMPANY**

One Securities Centre  
3490 Piedmont Road NE, Suite 210  
Atlanta, GA 30305  
(404) 467-5255



### REVISIONS

△	11.06.17	CLIENT COMMENTS
△	02.16.18	CITY COMMENTS
△	04.13.18	CITY COMMENTS



Know what's below.  
Call before you dig.

20161111u.dwg

12.21.16

DETAILED UTILITY PLAN

SHEET

**C-313**