

Fulton County COVID-19 Response Update

September 1, 2021 BOC Meeting

OVERVIEW

Incident Response Update

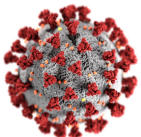
- Statistics
- Vaccination Response
- Mobile Vaccination Implementation

Reopening Update

- Reopening Update
- ERAP Phase II Update

2021 COVID Funding Update

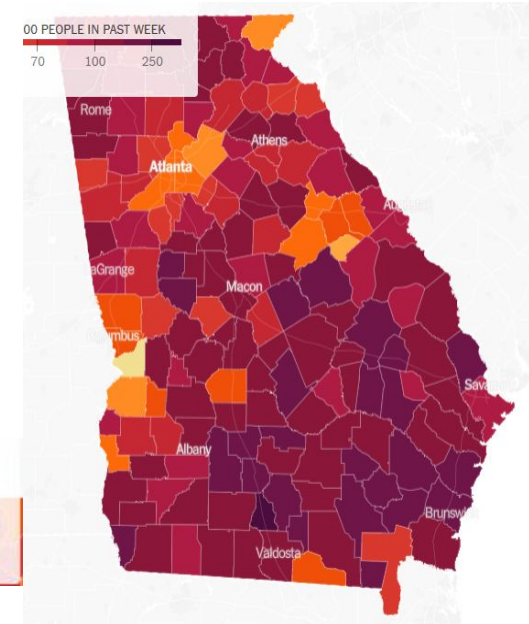
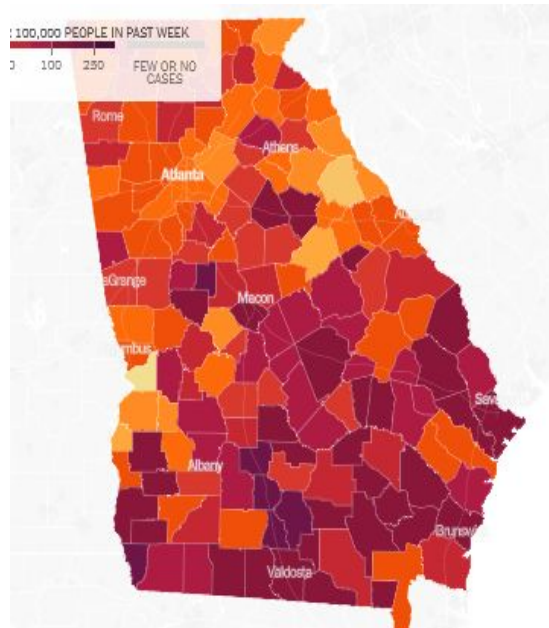
- Update - COVID 19 Reserve
- American Rescue Plan Spend Updates



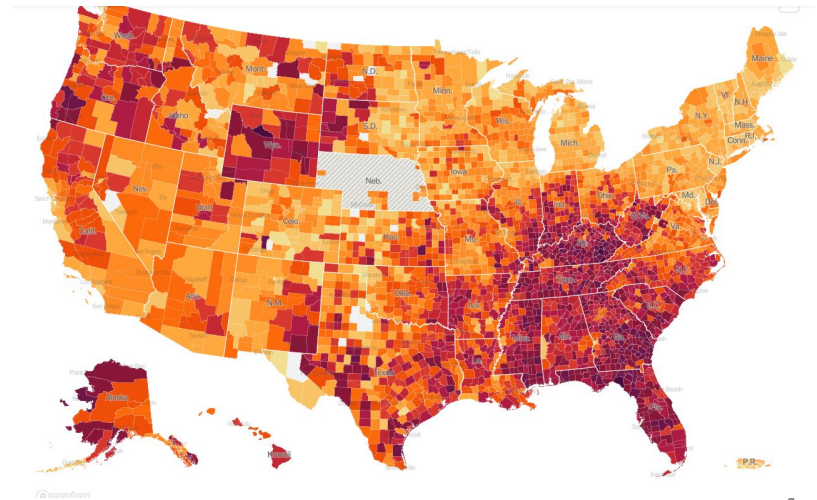
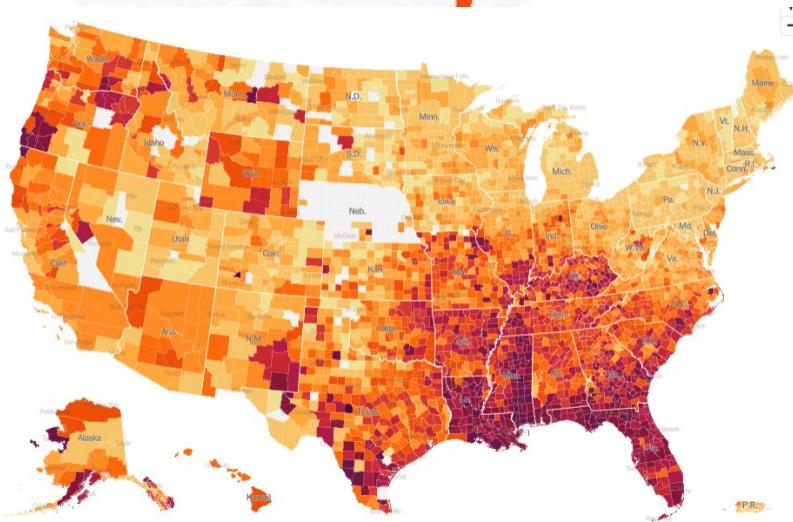
INCIDENT RESPONSE REVIEW

- The 7-Day Case rate for Fulton County continues to rise to 408.
- Fulton County exhibiting the highest level of community transmission since the beginning of the pandemic @ 500 cases per 100,000.
- This recent surge is expected to have a longer duration peaks, in both cases and hospitalizations due to the communicability of the Delta variant.
- 3 of 4 major indicators on the Fulton County scorecard are still red.

Incident Response Update (Heat Maps August 17 vs September 1)



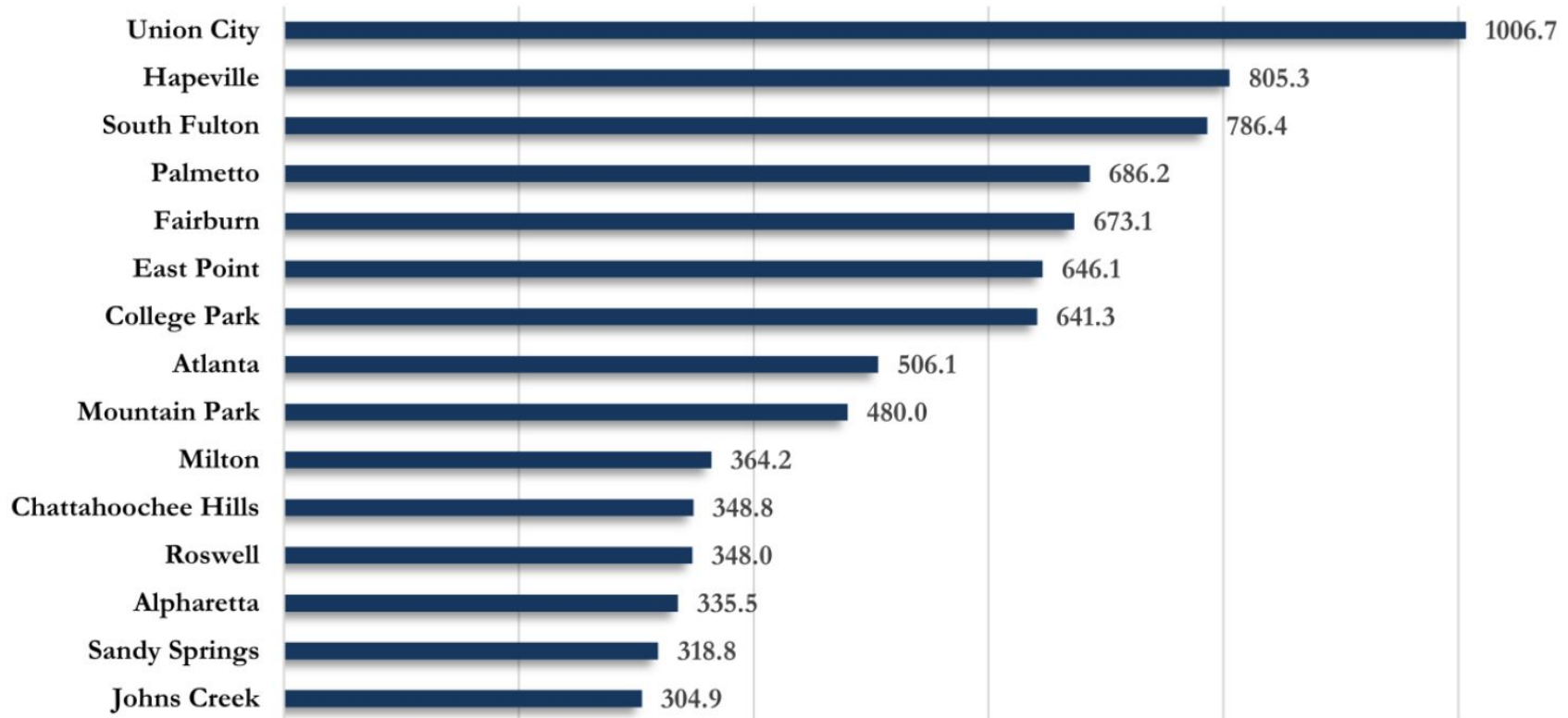
Hot spots



Incident Response Update



Fig. 8. Incidence Rates by Fulton City for Recent 14-day Reporting Period



**Rates shown are per 100,000 persons | All data shown are preliminary and are subject to change as testing results get updated.*

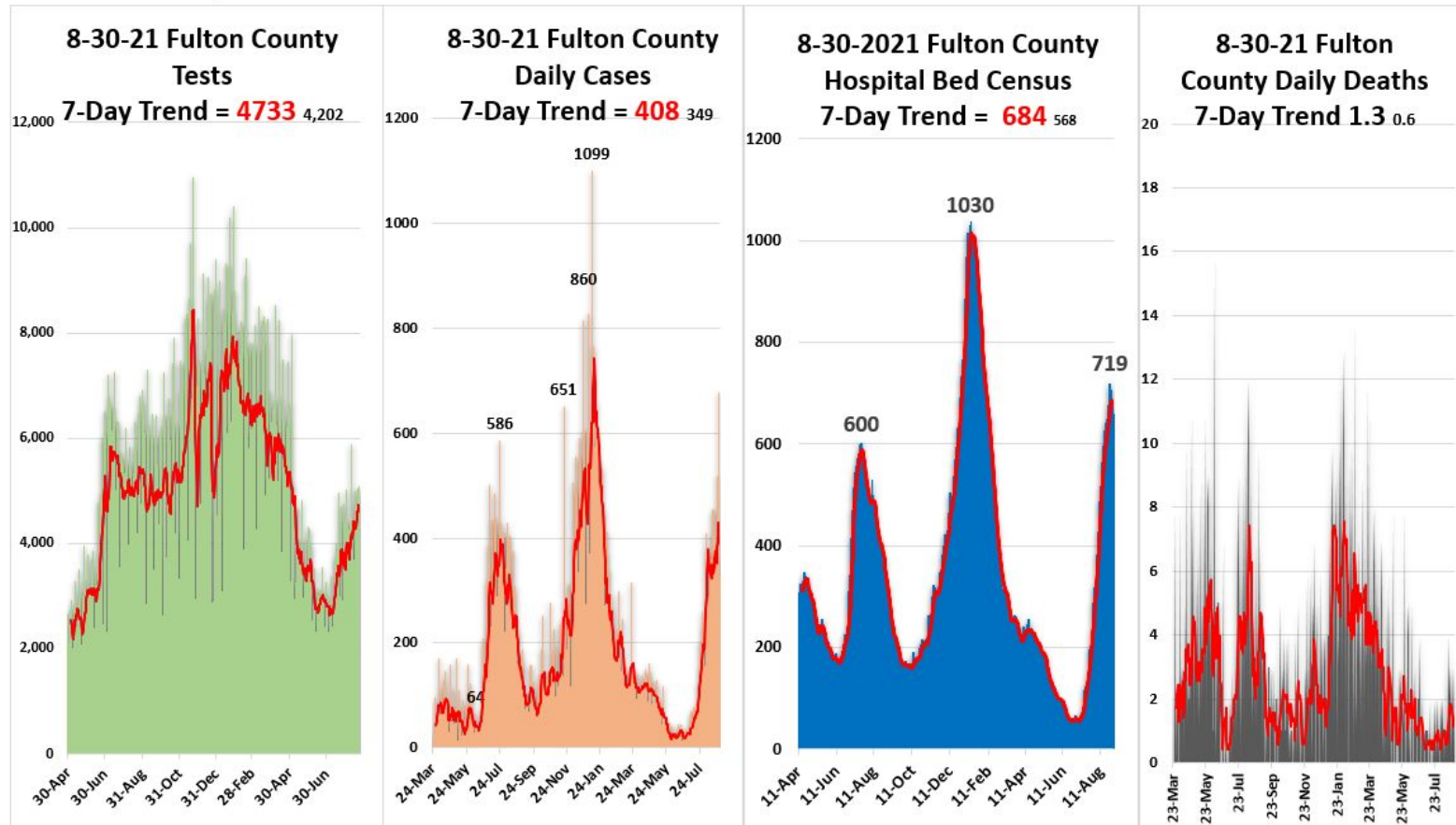
Incident Response Update



- **Fulton County COVID-19**

- 7-day average for cases is **408** up 17% since the last BoC.
- 7-day average for % positive is **13.4** down 8% BoC.
- 7-day average, Hospitalizations is **684** up 20% since the last BoC
- 7 day average, for deaths is **1.6** up 140% since the last BoC

Fulton County Dashboard 8-30-2021: New Tests = 5,098 / New Cases = 215 / New COVID Census = **659** / New Deaths = 0



Incident Response Update



8/30/21 Fulton County COVID-19 Scorecard

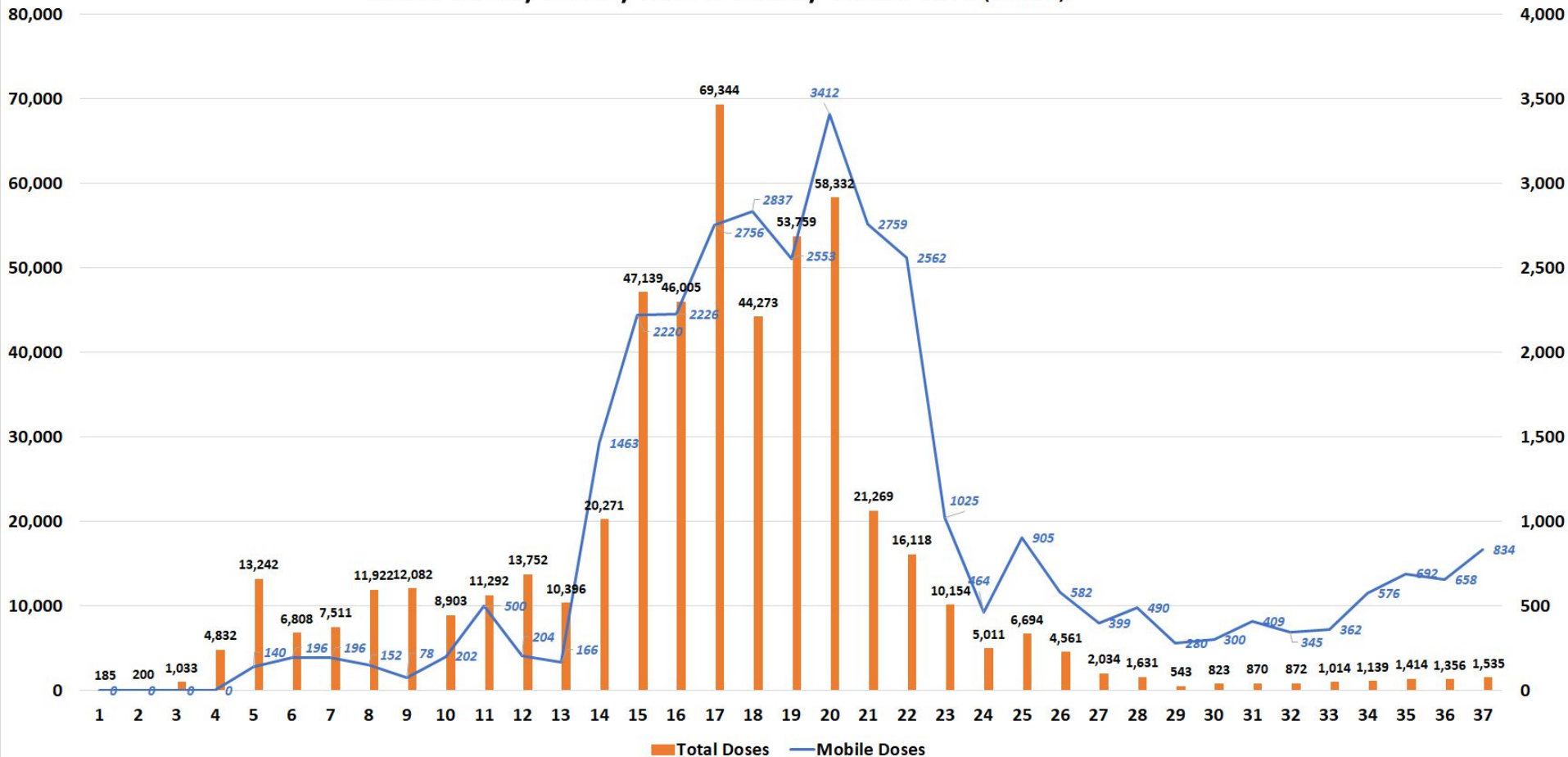
Metric	Status (7-day average) =*	Metric
Testing (Demand & Capacity)	* 4,733 ⬆️	Current capability is 6,000 / day Daily Testing: over 2857 , 1428 - 2857 , less than 1428
Testing (Results)	49-72 hrs ⬆️	Time to receive results: 0 - 48 , 49 - 96 , over 96
Cases	* 408 ₃₄₉ ⬆️	Less than 20 , 20 - 74 a day , 75 to 249 , over 250
Fulton positivity rate % +	* 12.8% _{13.4} ⬆️	Less than 1% , 1% - 5% , 5% - 10% , over 10%
Hospitalizations COVID census	* 684 ₅₆₈ ⬆️	Less than 50 , 50 - 200 , 201 - 349 , over 350
Hospital Bed Availability	* 11.8% ⬇️ * 10.7% Adult	Open Beds: over 20% , 15% - 20% , Less 15%
Hospital CCU Bed Availability	* 12.9% ⬇️ * 11.9% Adult	Open CCU Beds: over 20% , 15% - 20% , less 15%
Hospital Vent Availability	* 47.3% ⬇️	Open Vents: over 25% , 15% - 25% , less 15%
COVID Deaths	* 1.6 ⬆️	Less than .25 , .25 - 2.5 , 2.5 - 5 , over 5
Morgue census	* 94 ⬆️	Less Than 75 , 75 - 90 , over 90
COVID Vaccine Administered	521,523 92% ⬇️	More than 75% , 50% - 75% , less than 50%

VACCINATION RESPONSE

- Fulton County fixed & mobile vaccination sites reached the 521K vaccines administered.
- Fulton County mobile vaccination units have administered over 37K doses of vaccines.
- Ten mobile units will be at 53 locations this week.
- Vaccinations will continue to be available at these fixed locations: 6 Board of Health Clinics, 141 Pryor St, 4700 North Point, and *5710 Stonewall Tell Rd. * Open till 8 PM
- Mobile units have vaccinated 80% people of color and 85% in under vaccinated communities.
- Mobile units administered the most vaccinations this summer (834) last week

Vaccination Response

Fulton County Weekly Total & Weekly Mobile Total (5 % ratio)



- Mobile vaccinations are up 298% since June 27th
- Mobile units have vaccinated 80% people of color since June 27th
- Mobile units have Deployed 85% of the mobile units in under vaccinated areas

Vaccination Response

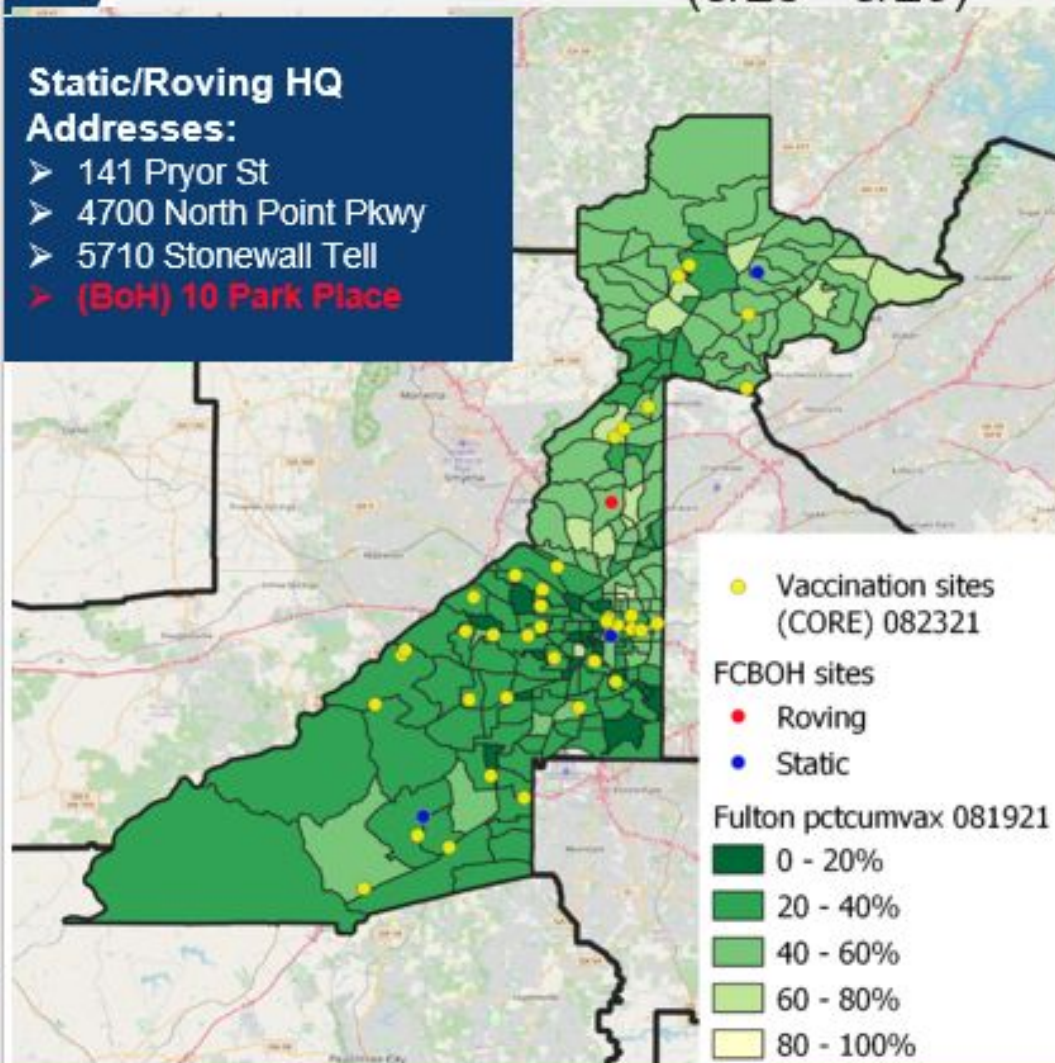
3

Fulton County Map of Mobile Vaccination Sites (8/23 - 8/29)

Static/Roving HQ

Addresses:

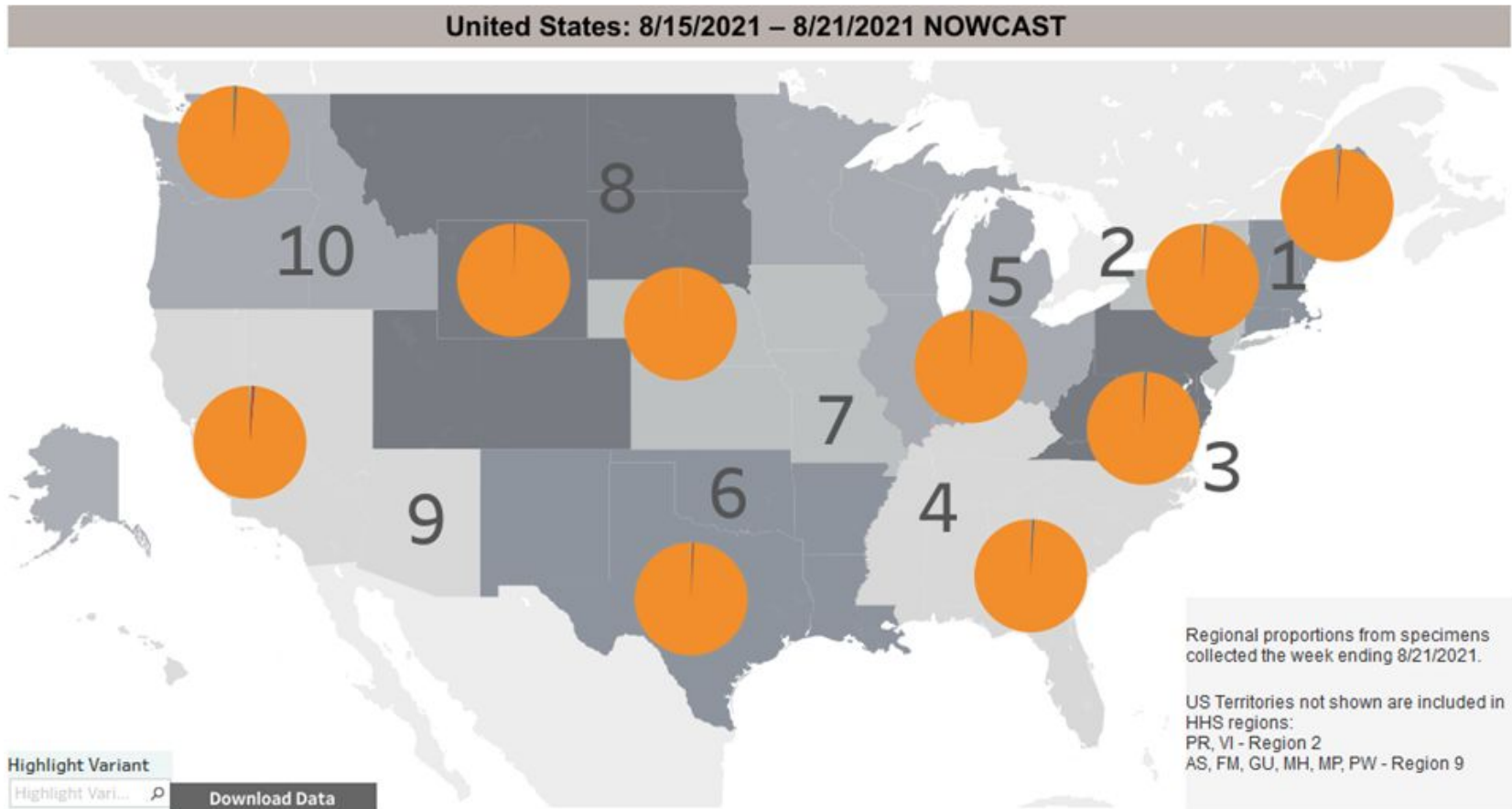
- 141 Pryor St
- 4700 North Point Pkwy
- 5710 Stonewall Tell
- (BoH) 10 Park Place



- Number of vaccines administered = 755
- Number of events supported = 51
- Number of unique sites visited = 43

Race		
	Number	Percentage
Black	476	63.05%
White	80	10.60%
Asian	10	1.32%
Native American	1	0.13%
Hawaiian or Pacific Islander	0	0%
Other Race	142	18.81%
Prefer Not to Say	46	6.09%
No Response	0	0%

Vaccination Response: Delta Variant



- Delta variant now accounts for 99% of new cases nationwide, 98% in GA (all Orange)
- Delta is more virulent, 5 to 10 times more than the Alpha Strain
- The symptoms are generally the same
- Early data suggests that Delta may have a higher hospitalization rate than Alpha
- Currently the death rate for Delta is similar to the Alpha
- The best defence for the delta variant is still mRNA Vaccines

Mobile Vaccination: Sites this week

7 Upcoming Sites/Events (8/30 - 9/5)						
August 30	August 31	Sept 1	Sept 2	Sept 3	Sept 4	Sept 5
Benjamin E. Mays High School	Best Middle/High School Academy, Coretta School King Young Women's Leadership Academy	Atlanta Neighborhood Charter Middle School	2021 Dragon Con	2021 Dragon Con	Bethel United Methodist Church	Atlanta Jazz Festival
Herman J. Russell West End Academy	Frederick Douglass High School	Booker T. Washington High School	D.M. Therrell High School	Atlanta College and Career Academy	Camp Truitt	Enon Baptist Church
Michael R. Hollis Innovation Academy	John Lewis Invictus Academy	Charles R. Drew Charter Jr Sr Academy	G. W. Carver High School Early College	Centennial Place Academy (Charter)	Perkerson Park	Pure Heat Festival
NFL Alumni Georgia Chapter in Collaboration with Atlanta Falcons'	Mount Pisgah	Howard Middle School	G. W. Carver STEAM High School	Mexican Consulate	South Fulton Service Center	Rev. James Orange Park
North Atlanta High School	North Fulton Community Charities (Food Pantry)	International Brotherhood of Electrical Workers (IBEW)	Georgia Aquarium	Midtown High School	Syncreon	Sweetwater Brewery
South Atlanta High School	South Fulton Service Center	Martin L. King Jr. Middle School	Health is Wealth Fair	South Fulton Service Center	The Gathering Place	
Willis A. Sutton Middle School	The Kindezi School West	Mary Parker Foundation	Impact Church	The Kindezi School Old 4th Ward	Zion Hill Baptist Church	
	Zion Hill Baptist Church	Maynard Jackson High School	Jeans Childs Young Middle School	Wesley International Academy		
		Mexican Consulate	Luther Judson Price Middle School			
		Mount Moriah	Ralph Bunche Middle School			

Mobile Vaccination: Road Ahead

- Weekly Goal is to have 2 units daily to be 2nd shift hours (2-8 pm).
- We will continually evaluate all activities both fixed and mobile on effectiveness and adjust or discontinue, as necessary.
- Returning to APS for vaccination event at 32 schools the weeks of August 30 - September 3.
- Other summer Events partnerships: Construction sites, Falcons, Marta locations, VAX-UP concert, summer camps.
- September roll out of incentive program for strike teams to distribute \$50 gift cards, partnering with FCS & APS (4 targeted schools in each system will host special saturday events).

TARGETED OUTREACH: CLOSING THE VACCINE EQUITY GAP



RACE

38.1% of Black residents have received at least 1 dose, compared to **57.6%** of White residents. This represents a difference of **85,261** people.

GEOGRAPHY

16 Census tracts within Fulton County have **<25%** residents with at least 1 dose.

AGE

50.3% of 20 - 24% year olds have received at least 1 dose, compared to **69.7% of 45 - 54** year olds

OUR APPROACH

ACCESS

- Community-based locations
- Non-traditional hours (Third shift)
- Language access
- Disability access
- Parent-friendly

INCENTIVES

- Give-aways
- Entertainment
- Refreshments
- Prizes

EDUCATION

- Town Hall meetings
- Conversation Guides
- “Myth Busting” collateral and video

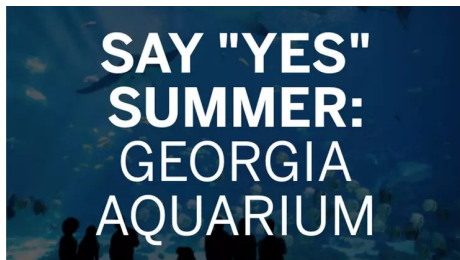
TRUSTED VOICES

Municipalities | Elected Officials | School Systems
Nonprofits | Media
Small Businesses | Community Orgs
Faith Partners
Youth Organizations

VAX UP MUSIC FESTIVAL



- Approximately 1,000 attendees each day
- Highest mobile vaccines in week leading up to concert
- Increase in South Fulton Service Center vaccination site (exceeded N Fulton site for first time)
- More than 20 vaccines given onsite over weekend
- Positive news coverage
- Support for Fulton County-based local artists and promoter



SAMPLE OF COMMUNITY PARTNERSHIPS



Questions?



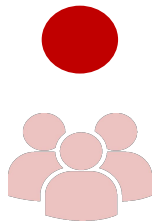


Fulton County Government Reopening Plan

Gating Criteria

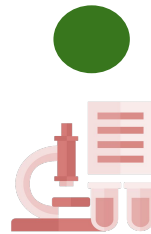
Reopening Indicators

CASES



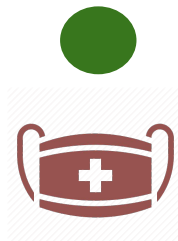
Downward trajectory in the 7-day average of new positive tests within a 14-day period, and positivity rate below 5%

VAX OR TEST

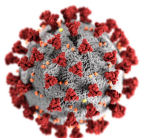


Ability to vaccinate employees to 80% goal and to test employees who choose alternative with results within 48 hours

EQUIPMENT



PPE and supplies for all employees interacting with public.



**Satisfy Before Proceeding to Phased Comeback*

COVID POSITIVE EMPLOYEES

LAST 2 WEEKS	
DEPARTMENT	POSITIVE
BHDD	1
DREAM	1
EMERGENCY SERVICES	1
FINANCE	2
LIBRARY	2
PROBATE COURT	1
PUBLIC WORKS	6
SENIOR SERVICES	1
SUPERIOR COURT-GENERAL	2
TAX COMMISSIONER	1
GRAND TOTAL	18

COVID POSITIVE EMPLOYEES

CUMULATIVE			
DEPARTMENT	POSITIVE	DEPARTMENT	POSITIVE
ARTS/COOP EXT	1	LIBRARY	28
BHDD	4	MAGISTRATE COURT	3
BOARD OF COMMISSIONERS	2	MEDICAL EXAMINER	2
BOARD OF HEALTH	28	POLICE	7
CLERK OF SUPERIOR COURT	50	PROBATE COURT	6
COUNTY ATTORNEY	3	PUBLIC DEFENDER OFFICE	4
COUNTY MANAGER	2	PUBLIC WORKS	33
COUNTY MARSHAL	11	PURCHASING	2
COMMUNITY DEVELOPMENT	1	ELECTIONS	5
DISTRICT ATTORNEY	17	SENIOR SERVICES	9
DREAM	25	SHERIFF	5
EMERGENCY MANAGEMENT	2	SOLICITOR GENERAL	5
EMERGENCY SERVICES	39	STATE COURT-ALL JUDGES	1
EXTERNAL AFFAIRS	2	STATE COURT-GENERAL	6
FINANCE	8	SUPERIOR COURT-ALLJUDGES	4
HUMAN RESOURCES	2	SUPERIOR COURT-GENERAL	27
INFORMATION TECHNOLOGY	5	TAX ASSESSOR	22
JUVENILE COURT	18	TAX COMMISSIONER	36
GRAND TOTAL			425

Return to Office Plan

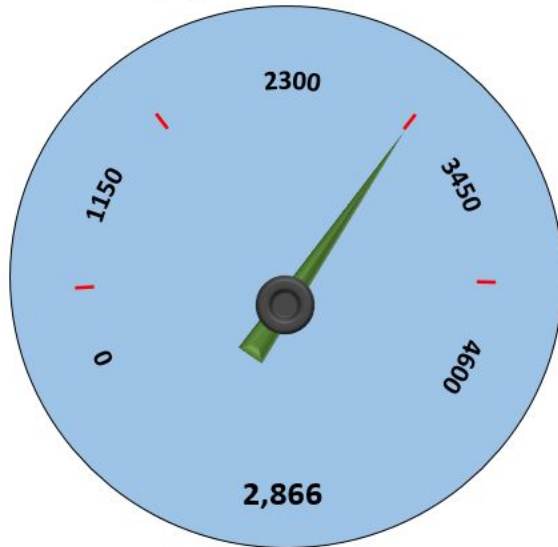


Fulton County Government

Employee Vaccination Wellness Incentive Report

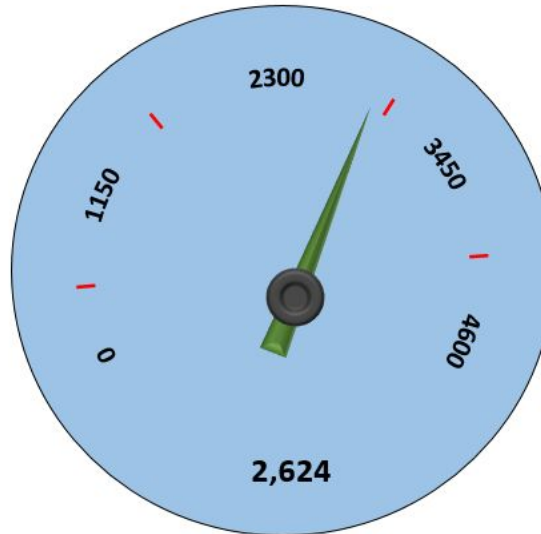
As of August 30, 2021

Applications



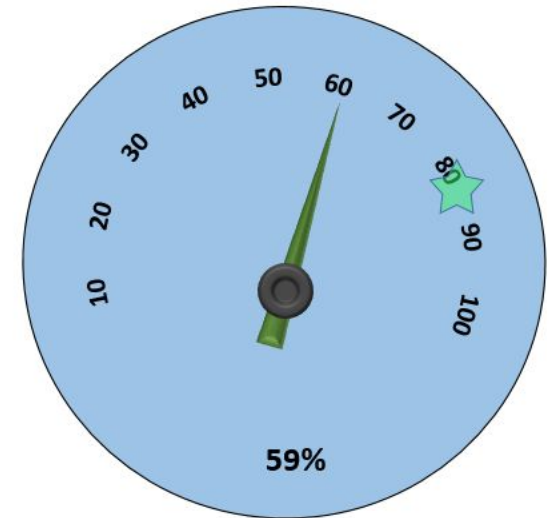
August 18th - 2,788
August 2nd - 2,709
July 12th - 2,560
June 14th - 2,291
May 31st - 2,056
May 17th - 1,813
May 1st - 1,454

Approved



2,526
2,484
2,353
2,102
1,894
1,702
1,354

Vaccination %



56%
55%
52%
47%
42%
41%
30%

Return to Office Plan

Employee Vaccination Or Test Program



Safe people, Safe place

- ☒ Educate workforce on benefits of vaccine
- ☒ Enhanced vaccination incentives
- ☐ All incentives will end on COB Friday, October 1, 2021



Vaccination mandate to begin Tuesday, September 7, 2021

- ☐ Provide proof of vaccination (submitted to HR) OR
- ☐ Provide proof of negative PCR/NAAT COVID test weekly OR
- ☐ Request reasonable accommodation exception from DCRC.



Enforcement begins Wednesday, October 6, 2021

- ☐ Failure to comply: 1st, 1 day suspension; 2nd, 5 days; 3rd, 10 days
- ☐ Employee suspended 4 times in 6 month = subject to dismissal
- ☐ New employees immediately subject to compliance.



Elected Officials

- ☒ Offices of Elected Officials will have the ability to Opt-in
- ☒ Employees of elected officials who do not adopt the policy = ineligible for FCEA incentives.

Emergency Rental Assistance

Phase II

QUICK STATS

2197 Applications adjudicated

650 applications paid*

\$2.09M FUNDS DISBURSED

* Info as of 8/23 ... difficulty communicating with vendor due to hurricane

Emergency Rental Assistance

Phase II

EXPANDED PROGRAM LIMITS

ASSISTANCE CATEGORY	MAX # MONTHS		MAX AMOUNT PER MONTH		TOTAL MAX ASSISTANCE	
	OLD	NEW	OLD	NEW	OLD	NEW
RENTAL ASSISTANCE	6	18	\$1300	NONE	\$7800	NONE
UTILITIES ASSISTANCE	6	18	\$200	NONE	\$1200	NONE
TOTALS	6	18	\$1500	NONE	\$9000	NONE

Emergency Rental Assistance

Phase II

PROGRAM HIGHLIGHTS

CDC Eviction Moratorium Overturned

- US Supreme Court held CDC exceeded its statutory authority in imposing nationwide eviction moratorium absent congressional action
- Effective immediately

Deputy US Treasury Secretary Acknowledgement

- Special invitation to top 8 performing jurisdictions across nation
- Says AG Garland sent a memo urging Chief Judges across nation to stay evictions for tenants with pending ERAP applications
- Says Treasury is “finalizing the process for drawing down” 2nd tranche

Call with Senator Ossoff’s Office

Summit with Atlanta Apartment Association



QUESTIONS



Emergency Response Reserve & American Rescue Plan Act Funds Update

COVID-19: Recovery Funds Plan

Economic Recovery and
Operational Resiliency Plan

September 1, 2021



Consolidated Covid Response Plan

In Millions \$	8.15.2021	8.27.2021	
		Budget	
	Operational Plan -100% FEMA Reimb	Plan Changes	Operational Plan -100% FEMA Reimb
EERF - General Fund	\$ 14.9	-	\$ 14.9
Communications	2.0	-	2.0
Child Care / Healthcare	1.3	-	1.3
Payment to Employees	6.6	-	6.6
Information Tech - Virtual Support	2.0	-	2.0
2020 Obligation	3.0	-	3.0
American Rescue Act	209.8	(4.8)	205.0
Health Infrastructure	17.3	-	17.3
Pandemic Proof County Facilities	28.0	-	28.0
Day Porters / Cleaning	4.1	-	4.1
Child Care / Healthcare	0.3	0.1	0.4
Premium Pay for Employees	3.4	-	3.4
PPE- County Employees	5.0	-	5.0
Court Backlog Project	75.0	-	75.0
Information Tech - Virtual Support	8.0	-	8.0
Safety Net Services - CSP	8.0	-	8.0
Long Term Revolving Loan Program	5.2	-	5.2
Food Insecurity	6.1	-	6.1
Job Training	2.7	-	2.7
ERAP 2	25.0	-	25.0
ERAP - 1 and 2 Additional Operational Costs	8.4	-	8.4
Testing Vaccination	11.7	(4.8)	6.8
Vaccine Incentive Program	1.7	-	1.7
Consolidated Appropriations Act	18.0	-	18.0
ERAP 1	18.0	-	18.0
FEMA Related Expenses	\$ 38.8	5.6	\$ 44.4
Projected Annual Uses	\$ 281.5	0.8	\$ 282.3
Reserve	\$ 46.0	4.8	\$ 50.8

8.15.2021		8.27.2021	
Expenses			
YTD Expenses		Expense Changes	YTD Expenses
\$	9.4	\$ 0.1	\$ 9.6
	1.4	0.1	1.5
	0.5	-	0.5
	6.6	-	6.6
	-	-	-
	1.0	0.0	1.0
	8.4	0.6	9.0
	-	-	-
	0.3	0.0	0.3
	0.5	0.1	0.5
	0.3	-	0.3
	3.4	-	3.4
	1.3	-	1.3
	0.0	0.1	0.1
	0.4	-	0.4
	-	-	-
	-	-	-
	0.0	0.0	0.0
	-	-	-
	-	-	-
	2.3	-	2.3
	-	0.4	0.4
	-	-	-
	12.2	2.5	14.7
	12.2	2.5	14.7
	17.4	0.0	17.4
\$	47.5	3.2	\$ 50.7

Cash Flow Projections – COVID 19 Response

Uses of Funds		2021	2022	2023	2024	Total
A	EERF - General Fund	14.9	-	-	-	14.9
B	American Rescue Act	84.7	66.3	51.5	2.6	205.0
C	Consolidated Appropriations Act	18.0	-	-	-	18.0
D	FEMA Related Expenses	44.4		-	-	44.4
Projected Annual Uses		\$ 162.1	\$ 66.3	\$ 51.5	\$ 2.6	\$ 282.3
Sources of Funds		2021	2022	2023	2024	Total
A	EERF	14.9	24.0			38.9
B	American Rescue Act	128.4	103.4			231.8
C	Consolidated Appropriation Act	18.0				18.0
D	FEMA Reimbursement at 100% over 2 years	11.1	33.3			44.4
Projected Annual Sources		\$ 172.4	\$ 160.7	\$ -	\$ -	\$ 333.1
Cash Balance EOY - 100% FEMA Reimbursement		10.4	104.8	53.4	50.8	50.8
Cash Balance EOY - 50% FEMA Reimbursement		4.8	82.6	31.1	28.6	28.6

Emergency Rental Assistance

ERAP -1

Funded - Consolidated Appropriations Act

Received - Mid/January 2021

<i>in Millions \$</i>	Allocation	Received by FC	YTD Expense
Regular	\$18.0	\$18.0	\$14.7

ERAP -2

Funded - American Rescue Plan Act

Received - Mid/May 2021

<i>in Millions \$</i>	Allocation	Received by FC	YTD Expense
A - Regular	\$14.2	\$5.7	\$0.0
B - High Need	\$10.7	\$4.3	\$0.0

ARPA - Admin. Supplement

County Allocation of ARPA funding for Administration	\$8.4	\$8.4	\$2.3
--	-------	-------	-------

Total	\$51.3	\$36.4	\$17.0
--------------	---------------	---------------	---------------





QUESTIONS