

Center for Advanced Surgical Services & Grady's Ponce Center

**A Presentation to
Fulton Board of Commissioners
November 3, 2021**

CASS “Correll Pavilion” & Ponce Center



**Center for Advanced Surgical Services
(CASS)
The “Correll Pavilion”**

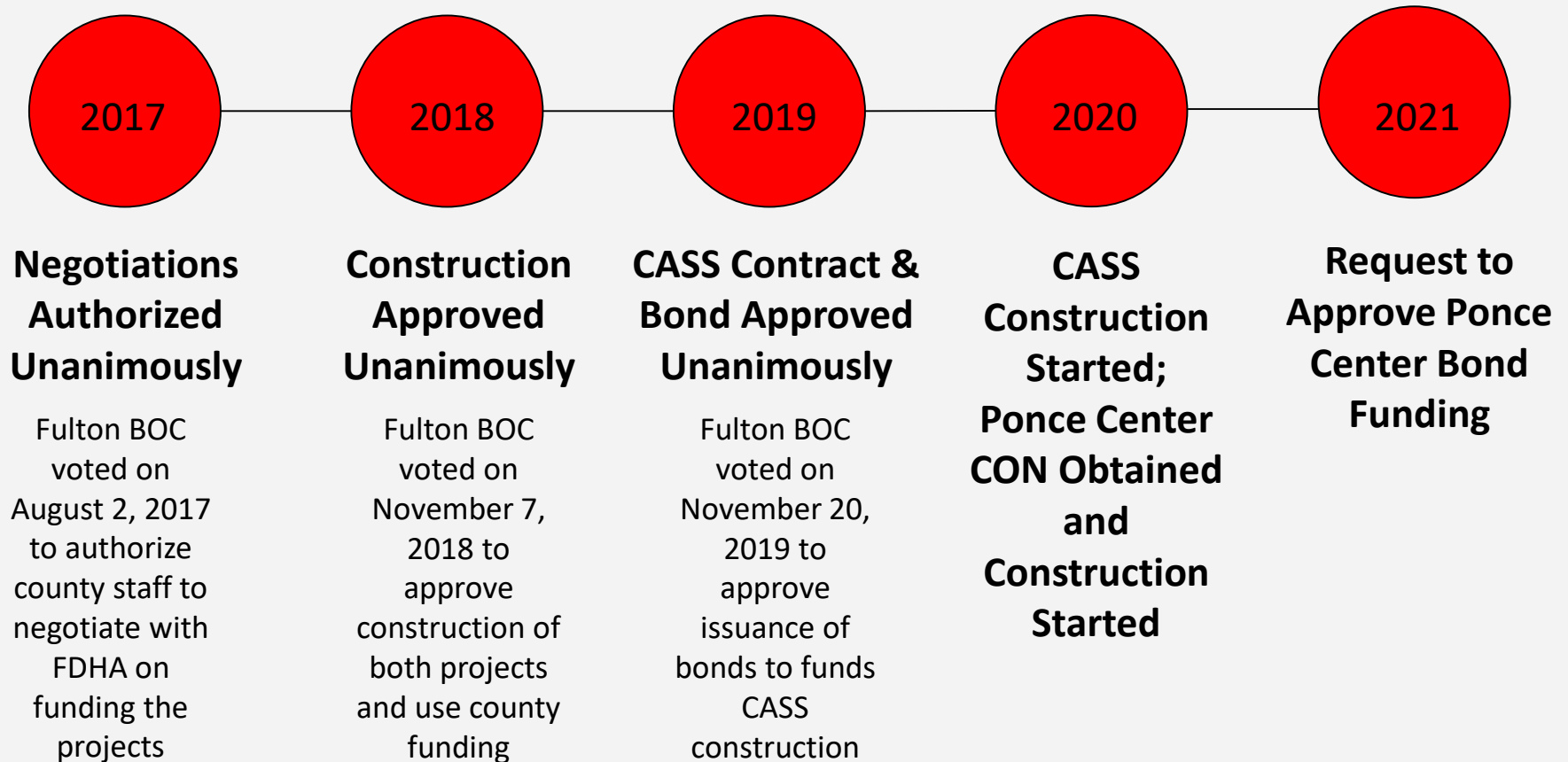
**Grady Ponce Center
Infectious Disease Program**



Presentation Overview

- **Timeline**
- **Update on Grady's Center for Advanced Surgical Services**
- **Transforming Grady's Ponce Center for Treatment of HIV/AIDS**
- **Funding Strategy and Bond Request**
- **Q&A**

Fulton County Timeline



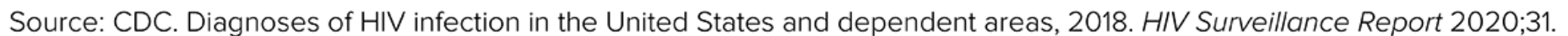
Center for Advanced Surgical Services:

Value Proposition

- Expands Grady's clinic capacity by 45%, increasing patient efficiency, volume and training
- Increases total operating room volume by 25% and creates more patient-centered environment
- Allows growth in strategic service lines
- Frees space for 59 new inpatient beds
- Diversifies our payor mix to further support our mission and expands Medicare market
- Increases Grady's operating margins and improves days cash on hand, ultimately providing financial flexibility for the health system



The highest rates of new HIV diagnoses were mainly in the South.



The Grady Ponce de Leon Center

Grady operates one of the largest and most impactful HIV/AIDS clinics in the country, known as the Ponce Center. **More than 6,000 men, women and children are served annually, 80% of whom reside in Fulton and DeKalb Counties (the two counties with the highest HIV prevalence in Georgia and among the highest in the U.S.)**

- 71% Male, 28% Female
- 14% <24y, 35% 25-44y, 51% > 45 y
- 84% Black/African American, 9% White, 5% Latinx
- 32% < FPL, 60% < 2 x FPL
- 42% Uninsured, 26% Medicaid, 21% Medicare



The Need to Expand and Transform Grady's Ponce Center for Treatment of HIV/AIDS

Atlanta is at the epicenter of the urgent HIV epidemic that has gripped the Southern United States – and Grady is on the frontlines of this crisis.

- The Ponce Center has not had major updates since it was opened in the early days of the AIDS crisis (early 1990s), though treatment models have changed drastically
- Current space is inadequate to handle the growing patient base, and the outdated facility does not support team-based, efficient care
- When the Center opened, the top two floors were left as shell space to allow for future growth when needed – and the need has never been more pressing

Transforming Grady's Ponce Center for Treatment of HIV/AIDS

- The Ponce Center will be expanded and revitalized so that we can serve more patients, conduct more groundbreaking research and develop new programs. The transformed building will:
 - Significantly expand treatment areas for primary and specialty care
 - Improve patient-centered care by streamlining key services
 - Increase patient support with dedicated education and wellness areas
 - Create a welcoming environment that maximizes privacy
 - Incorporate advanced technology to improve outcomes and communication
 - Support discovery with an expanded, dedicated space for research

The transformed Ponce Center will amplify our community's ability to help stem and respond to metro Atlanta's HIV/AIDS epidemic.

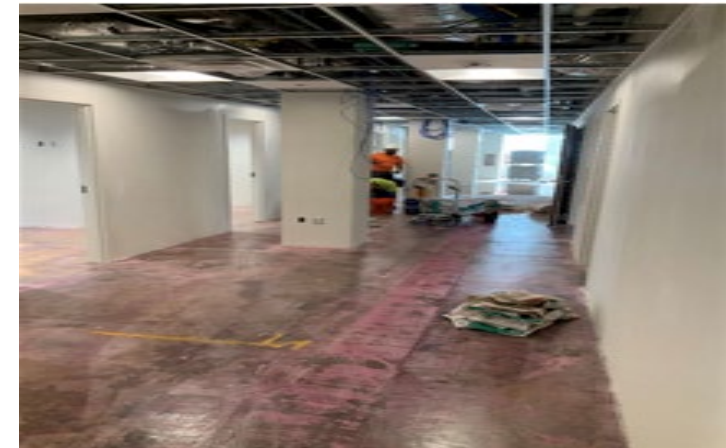
Ponce Project Highlights

- **Calendar Milestones**

- Construction began in October 2020
- Phase 1 – Floors 5 and 6 – were completed this Summer 2021
- Total project scheduled for completion by September 2022

- **Total Cost: \$35M**

- Fulton and DeKalb Counties: \$12M
 - Fulton: Pending
 - DeKalb: Approved
- Grady and Philanthropy: \$23M (already secured)



Funding Summary CASS and Ponce

A Public/Private Partnership

Category	Cost/Source
<i>Project Cost</i>	
Total CASS Project	\$231.9 M
Total Ponce Center Project	\$35.0 M
Total Project Cost	\$266.9 M
<i>Funding</i>	
Fulton/DeKalb Counties Bond Funding	\$111.3 M
Grady Health Foundation	\$94.0 M
Grady Funding	\$61.6 M
Total Funding	\$266.9 M

MWBE Spend

Ponce Center

- MWBE target is 20%
- The total diversity spend for the Ponce Center project is planned for 38.7%.
 - 81.95% of professional services
 - 33.03% of construction services
- Actual through July is 42.19%

Correll Pavilion

- MWBE target is 20%
- The total diversity spend for the CP project is planned for 22.42%.
 - 21.14% of professional services
 - 22.55 % of construction services
- Actual through July is 19.85%

Thank you